



## INTRODUCTION

This report is a sequel of the 1998 Mid-Year Hate Crime Statistical Report presented to the Police Services Board on September 24th, 1998.

The hate crime definition used by our Service is, “a criminal offence committed against a person or property that is based upon the victim’s race, national or ethnic origin, language, colour, religion, sex, age, mental or physical disability, sexual orientation, or any other similar factor.”

The Hate Crime Unit is responsible for reviewing all occurrences identified as hate motivated for statistical analysis and to ensure a proper investigation is conducted. In determining the hate motivation, information on the victim’s background, type of offence, reason for the attack, suspect name, affiliation to hate organizations, date and time, location and type of premise, etc. is taken into consideration. Comments made by suspects are also recorded as they are significant in determining the motive of the attack. Despite the criteria outlined in the Hate Crime Policy & Procedure, all officers are instructed to err on the side of caution and forward all suspected hate motivated crime occurrences to the Hate Crime Unit for review and further investigation if required.

The Hate Crime Unit continues to work closely with various community groups and our front line officers to provide them with training and education. In addition, investigative support and expert witnesses for court are provided when required.

It must be emphasised that while the Hate Crime Unit uses this information to determine trends and patterns, the data does not accurately represent the prevalence of hate bias crime offences and the seriousness of this issue. It is appreciated that for various reasons, some people may be reluctant to report their victimization to the police and this may account for the overall low statistics within the Greater Toronto area.

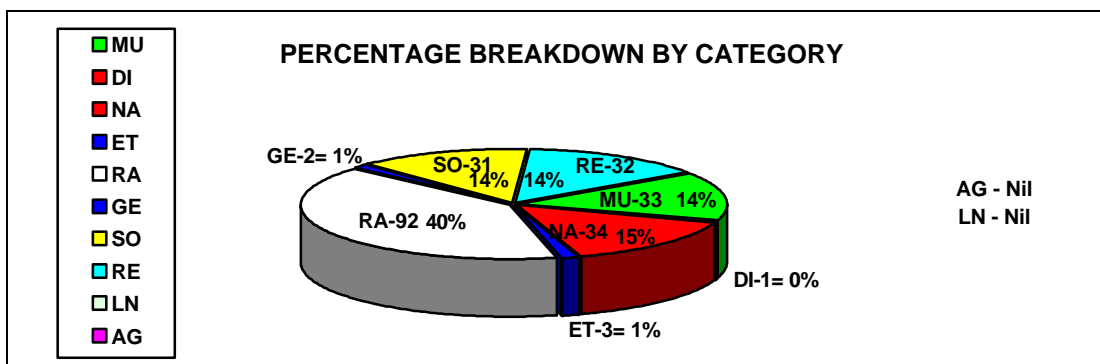
Accordingly, the Hate Crime Unit continues to work with the community to demonstrate our commitment and dedication to the investigation of hate motivated offences and the prosecution of those who commit hate motivated crimes in Toronto.



## OVERVIEW

In 1998 there were 228 hate bias criminal offences reported to The Toronto Police Service. The highest number of offences against an identifiable group were committed against the Black Community (61), followed by attacks against the Gay Community (31). There were 26 cases against the South Asian Community and 24 anti-Semitic offences. There were 34 cases based on Nationality and 33 were Multi-Biased. The following charts provide the breakdown of offences and categories.

OFFENCE	AG	DI	ET	GE	LN	MU	NA	RA	RE	SO	TTL
Advocate Genocide							1				1
Arson									1		1
Assault			2	2		5	11	42	3	13	78
Break & Enter									1		1
Common Nuisance									1		1
Criminal Harassment						3	3	11	1	1	19
Harassing Phone Call						1					1
Indecent Phone Call								1			1
Mischief		1				14	8	16	6	7	52
Robbery							3	2			5
Threat			1			4	8	11	10	9	43
Wil/Promotion of Hatred						6		7	9	1	23
Weapons Dangerous								2			2
<b>TOTAL</b>	<b>*0</b>	<b>*1</b>	<b>*3</b>	<b>*2</b>	<b>*0</b>	<b>33</b>	<b>34</b>	<b>92</b>	<b>32</b>	<b>31</b>	<b>228</b>



Victim Group Breakdown							
1-DI	3-ET	2-GE	33-MU	34-NA	92-RA	32-RE	31-SO

*Bias Category Legend*

AG-Age, DI-Disability, ET-Ethnicity, GE-Gender, LN-Language, MU-Multi-Bias, NA-Nationality  
 RA-Race/Colour, RE-Religion, SO-Sexual Orientation



1 Disability	2 S/Asian 1 Serbian	1 Female 1 Trans- gender	Multi-Bias Comments & actions directed at all minorities.	1 Armenian 2 Asian 1 Egyptian 1 Ethiopian 2 Iranian 2 Italian 1 Jamaican 1 Polish 1 Russian 17 S/Asian 2 Serbian 2 Somalian 1 Yugoslavian	1 Aboriginal 8 Asian 61 Black 3 East Indian 1 Guyanese 1 Maltese 7 S/Asian 1 Somalian 9 White	1 Catholic 2 Christian 24 Jewish 4 Muslim 1 Protestant	2 Gay Couple 24 Gay Male 5 Lesbian
-----------------	------------------------------	--------------------------------	--	---	---	--	--

### **OVERVIEW / PATTERNS**

In 1998 the statistics were consistent with previous years' statistics, in that, assaults (78) were the highest reported offences followed by mischiefs (52), threats (43) and hate propaganda (23) occurrences.

Most attacks are random and generally occur in public locations by suspects unknown to the victims. These locations are typically in the offender's own neighbourhood, school, or place of work. At the time of the offence, most offenders perceive a threat to their way of life, their community, place of work or their privileges. Victims can be a member of any vulnerable group, or someone who is perceived as inferior by the offenders. Most often victims are visible minorities.

While physical and verbal abuse is most prevalent, weapons were used in 16 occurrences. The offences involving weapons included knives, beer bottle, steel bar, brick, mace, and a stick. Letters and telephone messages were also used to convey threats and as a means of harassment.

It is often difficult to identify the offender(s), therefore, it is difficult to determine any association to organized hate groups. Even in cases where victim's are able to provide suspect's descriptions, evidence to identify participating hate groups is limited. Throughout 1998 there were four organized hate groups identified by the victims in four separate occurrences. These groups included the Heritage Front, Aryan Blitzkrieg, the Ku Klux Klan and White Aryan Resistance. The Ku Klux Klan and White Aryan Resistance were identified in hate propaganda offences involving posters and signs displayed in the community. The Heritage Front was identified in a threatening phone call and Aryan Blitzkrieg members were responsible in an assault using mace and a broken bottle. The assault by two Aryan Blitzkrieg members resulted in an arrest,

*Bias Category Legend*

AG-Age, DI-Disability, ET-Ethnicity, GE-Gender, LN-Language, MU-Multi-Bias, NA-Nationality  
 RA-Race/Colour, RE-Religion, SO-Sexual Orientation



however, further evidence is required to confirm the activities of the other three groups mentioned.

Generally, with older offenders(25 years and up - see table on pg. 6) there are no precipitating events to initiate the attack. The motivation is often the suspect's personal bias and a spontaneous action. Often, the suspects have no prior history of criminal behaviour. Frequently in cases where young offenders were involved, their motivation was based on ethnic polarization, territorial issues and peer acceptance.

**ACCUSED/SUSPECT(S) DESCRIPTIONS PROVIDED BY VICTIMS**

Age Range 11-17			Age Range 18-25			Age Range 26-40			Over 40		
Males	Females	Group Attacks	Males	Females	Group Attacks	Males	Females	Group Attacks	Males	Females	Group Attacks
17	3	0	25	3	13	32	2	2	16	1	1
Unknown Age											
Males - 13			Females - 4			Group Attacks - 10					

According to the suspect's descriptions provided by the victims, the majority of offences were committed by males in the age range of 18-25 years old. These offences were mostly assaults. Almost all assaults occurred in public areas. Suspect groups consisted mainly of males in groups of 2 and 3 individuals. In some instances groups ranged from 5 to 50 people.

**LOCATION OF OFFENCES**

Bank	3
Education/Schools, (Schools & School Yard, Universities, Board of Education)	17
Entertainment, (Movie Theatre & Museum, Billiard Hall)	3
Gas Station	1
Hospital	1
House of Worship, (Church x 3, Synagogue & Sikh Temple)	5
Jail	1
Library	3
Office (North York City Hall, Law x 2, Consulate, Dental , Insurance, Telemarketing)	15



Organizations (B' nai Brith, Canadian Jewish Congress, Muslim Society, Children's Aid, Operation Springboard, Men's Shelter & Community Centre, Asian Community Aid Service, Islamic Centre, Israel Bonds Office)	13
Parking Lots	5
Parks, (Parks & Beach)	7
Residence/Apartment Building	35
Residence/House	35
Restaurants, (Bars, Coffee Shops, Pizza Shop, Fast Food & Restaurants)	18
Retail Stores	10
Shipping Yard	1
Street/Laneway	39
Toronto Transit Commission, (Trains, Buses, Streetcars & Yard)	15
TV Studio	1
TOTAL	228

*Bias Category Legend*

AG-Age, DI-Disability, ET-Ethnicity, GE-Gender, LN-Language, MU-Multi-Bias, NA-Nationality  
 RA-Race/Colour, RE-Religion, SO-Sexual Orientation



### HATE BIAS CRIME OCCURRENCES BY DAY/MONTH

DAYS OF THE WEEK											
SUN	MON	TUE	WED	THU	FRI	SAT					
31	32	41	33	27	32	32					
MONTHS OF THE YEAR											
JAN	FEB	MAR	APR	MAY	JUN	JUL	AUG	SEP	OCT	NOV	DEC
21	18	20	8	22	24	28	24	27	21	7	8

The occurrence breakdown by day did not reflect any particular pattern. The monthly breakdowns are comparable except for April, November and December being significantly lower. Comparing all the monthly data did not provide us with further evidence to prove that the lack of hate crime activity during the lower months was directly attributed to any religious holiday or celebration that normally occurs during these months.

### 1998 CHARGES

In 1998 there were 59 reported hate motivated occurrences concluded with charges. Of these, 36 occurrences had multiple charges, 18 were disposed of by the courts, and 41 still remain before the courts.

<b>CHARGES</b>	
<u>OFFENCE</u>	<u>QTY</u>
Assault	38
Common Nuisance	1
Criminal Harassment	4
Robbery	3
Threats	11
W/Promotion of Hatred	1
Weapons Dangerous	1
Total Charges	59
Occurrences - No Charges Laid	23

<b><u>CONCLUDED CASES</u></b>		
<u>DISPOSITIONS</u>	<u>Y.O.</u>	<u>ADULTS</u>
Before the Courts	5	36
Guilty	1	9
Withdrawn	1	5
Dismissed		1
Acquitted		1
Total	7	52

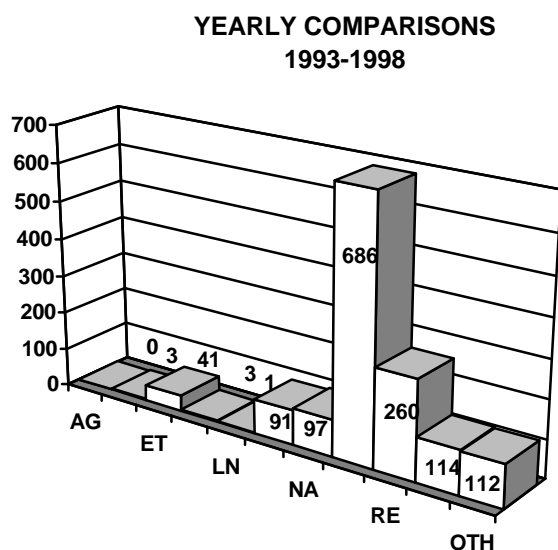


The findings of the courts in the concluded cases included, custodial time, conditional discharges, suspended sentences, probation, and peace bonds.

### YEARLY COMPARISONS

Yearly Percentage Comparisons					
1993	1994	1995	1996	1997	1998
155	249	302	175	187	228
n/a	61% increase	21% increase	42% decrease	7% increase	22% increase

An increase of 22% is reflected in this years reported hate crime offences compared to 1997. This increase is attributed primarily to the public becoming more aware and comfortable in reporting hate motivated offences to the police. Secondly, this increase is attributed to the change in our Service's definition of a hate crime, where the word "solely" was removed in 1997. The public's confidence on this issue has increased and will continue to do so through our communication and liaison with various community groups/organizations that are involved in anti-racism and equity issues.



Most Victimized Groups 1993-1998	
Anti:-	
Black	372
Jewish	225
South Asian	131
Multi-Bias	117
Sex/Orientation	114
White	79
Asian	61
Muslim	23
East Indian	22
Somalian	18
Serbian	12
Iranian	10
Other	112
<b>TOTAL</b>	<b>1296</b>

"Other" is a combination of all categories with less than 7 offences each for the last 6 years.

### YEARLY COMPARISONS

YEAR	AG	DI	ET	GE	LN	MU	NA	RA	RE	SO	TOTAL
1993			8*			^	*	^77	54	16	155
1994		2	6			^	17	^155	58	11	249
1995			10	1		32	23	164	50	22	302
1996			9			8	7	101	32	18	175
1997			5		1	18	16	97	34	16	187
1998		1	3	2		33	34	92	32	31	228

Bias Category Legend

AG-Age, DI-Disability, ET-Ethnicity, GE-Gender, LN-Language, MU-Multi-Bias, NA-Nationality  
 RA-Race/Colour, RE-Religion, SO-Sexual Orientation



Annual Total	0	3	41	3	1	91	97	686	260	114	1296
--------------	---	---	----	---	---	----	----	-----	-----	-----	------

\* - In 1993 Nationality and Ethnicity was combined. ^ - In 1993 & 1994 Race and Multi-Bias were combined.

## YEARLY TREND COMPARISONS

### RACE

As in previous years, hate motivated crimes against visible minorities accounted for the highest number of occurrences. These offences were often unprovoked, random assaults, committed in public areas throughout the city by unknown suspects. In 1998, racial offences made up 40% of the total reported hate crimes.

### RELIGION

Anti-Semitic offences accounted for the highest number of religious occurrences, the majority being mischief offences where damage was done to private property. This has been consistent throughout the 6 years of analysis. Various offences against the Muslim Community were the next highest category. In 1998 religious offences made up 14% of the total reported hate crimes.

### SEXUAL ORIENTATION

In 1998 criminal offences based on a person's sexual orientation (14%) consisted mainly of assaults, threats, and mischief. In previous years almost all were assaults which took place mainly in the downtown area. In 1998 the offences based on sexual orientation were reported in 11 police divisions of the 18 divisions in our Service. However, 10 of the 31 reported offences, occurred in 52 Division.

### NATIONALITY/ETHNICITY

A variety of offences took place throughout the city. In every case comments were made about the victim's specific ethnic and/or nationality origins. Nationality offences made up 15% of the total in 1998.

### MULTI-BIAS

The suspect's bias was not towards any specific group. These were mostly mischief occurrences involving graffiti. In 1998 multi-bias accounted for 14% of the total.





The most victimized groups in 1998, as in previous years, continued to be visible minorities of any race, members of the Jewish faith, and the gay community respectively. This has been a consistent pattern since 1993. Multi bias offences encompassed all these groups.

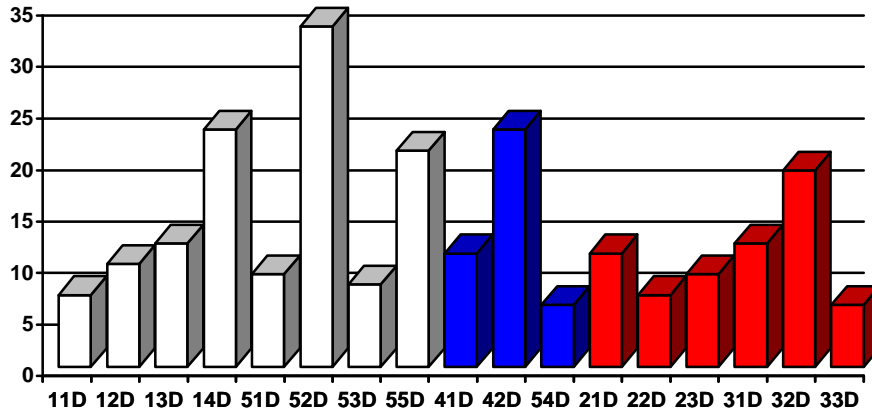
---

*Bias Category Legend*

*AG-Age, DI-Disability, ET-Ethnicity, GE-Gender, LN-Language, MU-Multi-Bias, NA-Nationality*  
*RA-Race/Colour, RE-Religion, SO-Sexual Orientation*



**HATE BIAS OCCURRENCES BY DIVISION & FIELD COMMANDS**



**CENTRAL FIELD COMMAND - Total 123**  
**Divisions 11, 12, 13, 14, 51, 52, 53 & 55**

*Bias Category Legend*

AG-Age, DI-Disability, ET-Ethnicity, GE-Gender, LN-Language, MU-Multi-Bias, NA-Nationality  
 RA-Race/Colour, RE-Religion, SO-Sexual Orientation



11 Division - 7 Hate Bias Occurrences Against:-

Black - W/Promotion Hatred  
 Black - Assault  
 Black - Criminal Harassment  
 Gay Male - Threat  
 Lesbian - Threat  
 S/Asian - Threat  
 S/African - Criminal Harassment

13 Division - 12 Hate Bias Occurrences Against:-

Christian - W/Promotion Hatred  
 Gay Male - Assault  
 Iranian - Threat  
 Jewish - Common Nuisance  
 Jewish - W/Promotion Hatred  
 Jewish - Break & Enter  
 Jewish - Threat (Bomb)  
 Jewish - Threat  
 Pakistani - 2 x Mischief  
 Somalian - Assault  
 Yugoslavian - Threat

51 Division - 9 Hate Bias Occurrences Against:-

Black - Robbery  
 Black - 2 x Assault  
 Black - W/Promotion Hatred  
 Gay Couple - Mischief  
 Gay Male - Assault  
 Gay Male - Threat  
 Iranian - Robbery  
 Pakistani - Threat

52 Division - 33 Hate Bias Occurrences Against:-

Black - 3 x Assault  
 Black - Criminal Harassment  
 Black - W/Promotion Hatred  
 Black - 2 x Threat  
 Black - Mischief  
 Chinese - Mischief  
 Chinese - Assault  
 Egyptian - Threat  
 Gay Male - 5 x Assault  
 Gay Male - Mischief  
 Gay Male - 2 x Threat  
 Gender - 1 Assault  
 Jewish - 2 x Mischief  
 Jewish - 2 x W/Promotion Hatred  
 Lesbian - W/Promotion Hatred  
 Multi - Threat  
 Multi - 2 x W/Promotion Hatred  
 Multi - 3 x Mischief  
 White - 2 x Assault

12 Division - 10 Occurrences Against:-

Black - Threat  
 Black - Indecent Tell/Call  
 Jewish - Threat  
 Multi - Assault  
 Pakistani - Assault  
 Punjab Sikh - Threat  
 Serbian - Threat  
 Somalian - Assault  
 White - 2 x Assault

14 Division - 23 Hate Bias Occurrences Against:-

Black - 3 x Assault  
 Black - Criminal Harassment  
 Chinese - W/Promotion Hatred  
 Chinese - Assault  
 Gay Couple - Assault  
 Gay Male - 2 x Assault  
 Gay Male - Threat  
 Jamaican - 2 x Mischief  
 Jewish - Mischief  
 Jewish - W/Promotion Hatred  
 Jewish - Arson  
 Lesbian - Threat  
 Multi - Criminal Harassment  
 Multi - Assault  
 Multi - 2 x Mischief  
 Pakistani - Assault  
 Russian - Mischief  
 White - Threat

53 Division - 8 Hate Bias Occurrences:-

Black - Criminal Harassment  
 Black - Assault  
 Chinese - Assault  
 Gay Male - Mischief  
 Multi - Harassing Phone/Calls  
 Pakistani - 2 x Assault  
 Pakistani - Criminal Harassment

55 Division - 21 Hate Bias Occurrences Against:-

Black - 5 x Assault  
 Black - Criminal Harassment  
 Black - Robbery  
 Black - Mischief  
 Disability - Mischief  
 Gay Male - Assault  
 Gay Male - Criminal Harassment  
 Italian - Threat  
 Jewish - Mischief  
 Lesbian - Mischief  
 Multi - 3 x Mischief  
 Multi - Assault  
 Pakistani - Assault  
 Pakistani - Mischief  
 Pakistani - Robbery

Bias Category Legend

AG-Age, DI-Disability, ET-Ethnicity, GE-Gender, LN-Language, MU-Multi-Bias, NA-Nationality  
 RA-Race/Colour, RE-Religion, SO-Sexual Orientation



**EAST FIELD COMMAND - Total 40**  
**Divisions 41, 42 & 54**

41 Division - 11 Hate Bias Occurrences Against:-

Black - Threat  
Black - Assault  
Catholic - Mischief  
Ethiopian - Mischief  
Guyanese - Criminal Harassment  
Lesbian - Mischief  
Multi - 2 x Mischief  
Multi - Threat  
Trinidad - Mischief  
White - Assault

54 Division - 6 Hate Bias Occurrences Against:-

Black - 2 x Assault  
Gay Male - Mischief  
Muslim - Assault  
Pakistani - Threat  
Pakistani - Mischief

42 Division - 23 Hate Bias Occurrences Against:-

Black - 2 x Weapons Dangerous  
Black - W/Promotion Hatred  
Black - Mischief  
Black - Threat  
Black - 2 x Assault  
Chinese - 2 x Assault  
Chinese - W/Promotion Hatred  
Christian - W/Promotion Hatred  
East Indian - Mischief  
Multi - 3 x W/Promotion Hatred  
Multi - 2 x Assault  
Multi - 2 x Mischief  
Multi - Threat  
Muslim - Assault  
Pakistani - Assault  
Pakistani - Criminal Harassment

**NORTH WEST FIELD COMMAND -Total 65**  
**Divisions 21, 22, 23, 31, 32 & 33**

21 Division -11 Hate Bias Occurrences Against:-

22 Division - 7 Hate Bias Occurrences Against:-



Black - 3 x Assault  
 Black - Criminal Harassment  
 Black - Mischief  
 Multi - Threat  
 Pakistani - Assault  
 Pakistani - Threat (Bomb)  
 Polish - Assault  
 Serbian - Assault  
 White - Assault

Chinese- - Mischief  
 East Indian - Mischief  
 Gay Male - Mischief  
 Multi - W/Promotion Hatred  
 Serbian - Mischief  
 Somalian - Mischief  
 White - Threat

23 Division -9 Hate Bias Occurrences Against:-

Aboriginal - Mischief  
 Black - Mischief  
 Black - Assault  
 Black/Somalian - Criminal Harassment  
 East Indian - Assault  
 East Indian - Mischief  
 Italian - Threat  
 Multi - Criminal Harassment  
 Somalian - Assault

31 Division -12 Hate Bias Occurrences Against:-

Black - Criminal Harassment  
 Black - 2 x Assault  
 Black/Maltese- Criminal Harassment  
 Chinese - Advocate Genocide  
 East Indian - Assault  
 Gay Male - Assault  
 Multi - Mischief  
 Muslim - W/Promotion Hatred  
 Pakistani - Criminal Harassment  
 Women - Assault

32 Division - 20 Hate Bias Occurrences Against:-

Black - Threat  
 Black - W/Promotion Hatred  
 Black - Assault  
 Gay Male - Assault  
 Gay Male - Threat  
 Jewish - Mischief  
 Jewish - 4 x Threat  
 Jewish - Assault  
 Jewish - Threat (Bomb)  
 Jewish - 3 x W/Promotion Hatred  
 Multi - Mischief  
 Pakistani - 2 x Assault  
 Pakistani - Robbery  
 Protestant - Criminal Harassment

33 Division -6 Hate Bias Occurrences Against:-

Armenian - Assault  
 Gay Male - Threat  
 Multi - Criminal Harassment  
 Muslim - Threat  
 Pakistani - Mischief  
 White - Threat (Death)

*Bias Category Legend*

AG-Age, DI-Disability, ET-Ethnicity, GE-Gender, LN-Language, MU-Multi-Bias, NA-Nationality  
 RA-Race/Colour, RE-Religion, SO-Sexual Orientation



## **EDUCATION-TRAINING**

In 1998 the Hate Crime Unit focused its efforts in criminal investigations, education, and prevention of hate motivated crimes in Toronto.

### **Hate Bias Training For Crown Attorneys**

The Hate Crime Unit, in conjunction with the Ontario Provincial Police Intelligence Hate Crime Unit, conducted training sessions for provincial crown attorneys. A total of 400 crown attorneys attended the sessions.

### **Investigative Support Role and Intelligence Gathering**

The Hate Crime Unit continued to network with local, provincial, national and international law enforcement agencies.

### **Hate-Bias Training For Front Line Officers and Detectives**

The Hate Crime Unit continued to provide support for field officers by providing intelligence on organized hate groups and training on the identification of hate motivated crimes. The Unit assisted local divisions with investigative support and in case tracking. Training was conducted at divisions across the City of Toronto and at the C.O. Bick College. There were 30 information sessions conducted throughout the year.

Hate-Bias training for Peterborough Community Police Service, Niagara Regional Police Service, London Police Service, York Regional Police Service and Halton Regional Police Service was conducted by members of the Unit.

### **Toronto Police Service - Civilian Police College**

There was one hate motivated crime training session conducted at the Civilian Police College.



### **Youth and Police Against Racism Conference**

The Hate Crime Unit assisted the Community Relations Section of the Toronto Police Service with hate crime information and community resources for “Youth and Police Against Racism Conference” in which 220 participants attended.

### **Youth-Community-Police Involvement**

The Hate Crime Unit, in conjunction with the Community Relations Section of the Toronto Police Service, organized events with local school boards, Significant Music Inc., and the Metro Access and Equity Committee. The events included a concert at the Metro Hall Rotunda to celebrate “Positive Youth Initiatives”, and addressing “Hate Activity through Music and Arts”. There were 300 participants in attendance at the events.

### **Community Outreach**

The Hate Crime Unit continued to work with local agencies, to assist them in the development of strategies for outreach within the community.

The Hate Crime Unit participated in a program, called “Not In Our Town”, presented at the 18th Annual Holocaust Education Week. The program was sponsored by the Holocaust Education & Memorial Centre of Toronto.

The Hate Crime Unit, in conjunction with several community organizations, organized a seminar, “Exposing Hate on the Internet” which provided education to members of the law enforcement community.

There were 20 presentations on hate motivated crime to community agencies in cooperation with Metro’s Access & Equity Committee and the League for Human Rights-B’nai Brith Canada.