

**Statistical Report
2000**

Toronto Police Service

Introduction

The following categories of offences will assist the reader in understanding the basis for the gathering and allocation of specific statistics within this report.

Types of Offences

Violent offences are crimes involving the application and/or threat of force to a person. These include: murder, manslaughter, abduction, sexual assault, assault and robbery.

Property offences involve unlawful acts with respect to property but do not involve the use or threat of violence against an individual. These may include: theft, possession of stolen property, break and enter and fraud.

Other Criminal Code offences include Criminal Code offences that are classified as neither violent nor property offences. Examples are: prostitution, gaming and betting, mischief, offences against public order, and bail violations.

Drug offences involve offences under the Controlled Drugs and Substances Act. These offences are: possession, trafficking, importation or cultivation of various illicit, controlled and restricted drugs.

Other federal statute offences

include violations under all other federal statutes. They include; the Bankruptcy Act, Customs Act, Excise Act, and Immigration Act.

Provincial Statute offences include all violations under provincial statutes except Criminal Code traffic related statutes. Examples are: Coroner's Act, Environmental Protection Act, Mental Hospital Act and Liquor Licence Act.

A Word of Caution

This document details statistics which represent levels of activity relating to certain types of crime. It is important to note that these statistics are only valid within the specific framework in which they were gathered. They should not be compared to statistics from other agencies which may appear to report on similar issues. For example, Statistics Canada records only the most serious offence at a specific incident, whereas the Toronto Police Service records all offences at that same incident. Attempts to compare the two statistics is an apples and oranges exercise.

Overview of Statistics, 2000

- **Reported Criminal Code Offences** excluding traffic offences fell marginally by 0.8% in 2000 over the previous year.
- **Violent crime** went up by 8.2% in 2000 from 1999.
- **Property crime** dropped 7.5% over the same period.
- **Other criminal Code Offences** increased by 6.2% in 2000 from 1999.
- There were 59 homicides in 2000 compared to 47 in 1999, an increase of 25.5%. There were two young offenders charged with homicide in 2000 compared to 32 adults charged.
- Sexual assaults increased by 3.3%. 52.5% of these offences were committed against persons under 18 years of age. There were 164 young offenders charged with sexual assault in 2000 compared to 123 in 1999.
- Total non-sexual assaults increased by 11.9% in 2000 over 1999. Of these, 77% were minor in nature. 1768 young offenders were charged with assault in 2000 compared to 1723 in 1999.
- Total robberies decreased 5.9%. Robbery of banks and financial institutions decreased 32.2%, while purse snatching decreased 25.6%.
- Break and enters to houses decreased 19.3%. Entries to apartments increased 5.7%.
- There were 12,066 motor vehicles reported stolen in 2000 representing a decrease of 4.2% from 1999. Out of the 667 persons charged for stealing motor vehicles, 253 were young offenders.
- There were 67 traffic fatalities in 2000.
- There were 819 complaints against police officers in 2000, compared to 629 in 1999.
- Number of vehicles stopped by R.I.D.E. (Reduced Impaired Driving Everywhere) decreased in 2000 by 1.2% to 115,112.
- Total calls for service received at the Communications Centre increased 2.5% while the total dispatched calls for service increased 4.4% in 2000 over 1999. The Service reaches out to wider sections of the community by providing service in languages other than English through the Language Line Service. In 2000 there were 2,578 calls for service received in any one of 46 different languages.



Table of Contents

<u>Introduction</u>	i - ii
Uniform Strength, Expenditures & Distribution	1
Budget Information	1
Police Personnel by Rank and Classification	2
Police Personnel by Division and Field Command	3
Fleet Information	4
Calls for Service, AT&T Language Line Service	5
Public Complaints	6-7
Community policing & Miscellaneous Information	8-9
General Data by Division and Field Command	10
Traffic Accidents	11-12
<u>General Crime Information</u>	
Criminal Code Offences - Highlights	13-15
Criminal Code Offences by Category	16-17
Selected Offences Against Victims by Age and Sex	18
Persons Charged by Age and Sex	19-20
Violent Crime Statistics	21
Selected Offences Against Police Officers	22
Total Incidents Reported to Statistics Canada	22
<u>Criminal Code Offences Reported and Cleared</u>	
Field Command and Toronto Totals	23
By Division and Field Command	24-27
<u>Traffic and Other Offences</u>	28
<u>Persons Charged</u>	
Criminal Code Offences	29
Traffic and Other Offences	30
By Unit of Officer	31

Uniform Strength and Expenditures

	1996	1997	1998	1999	2000
Population Served	2,463,475	2,487,185	2,512,079	2,538,191	2,565,555
Uniform Strength	4,746	4,940	4,904	5,111	5,149
Uniform Strength /Population*	1/519	1/503	1/512	1/497	1/498
Actual Expenditures(Gross \$)	509,546,500	522,253,500	526,106,800	554,227,500	579,699,200+
Per Capita Cost*	206.84	209.98	209.43	218.36	225.95+

* Updated where applicable

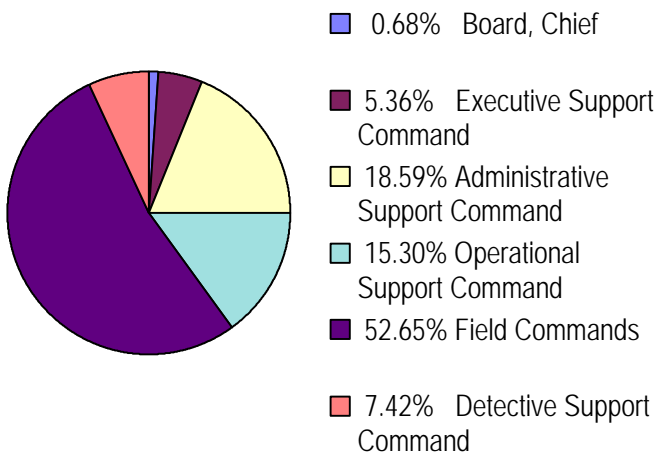
+ Estimate (based on projected expenditures).

Gross Operating Budget

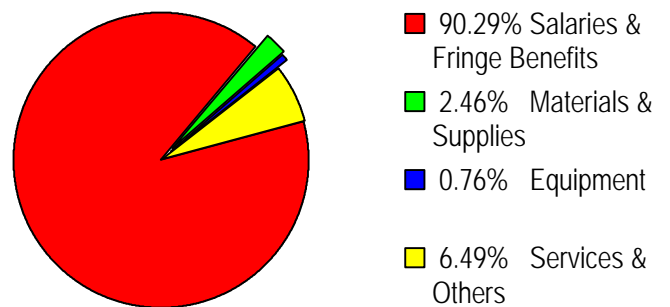
Year	Budget (\$)*	Change from Previous Year (\$)	% Change from Previous Year
1996	506,645,600	-8,289,000	-1.61
1997	522,130,600	15,485,000	3.06
1998	522,145,800	15,200	0.003
1999	537,911,400	15,765,600	3.02
2000	577,893,300	39,981,900	7.43

Operating Budget

By Appropriation



By Feature



	1996	1997	1998	1999	2000
Chief	1	1	1	1	1
Deputy Chief	6	6	6	5	4
Superintendent	14	14	18	21	21
Staff Inspector	37	36	33	29	26
Inspector	7	7	24	29	34
Staff Sergeant/Detective Sergeant	195	197	227	222	238
Sergeant/Detective	797	813	848	856	886
Police Constable	3,689	3,866	3,747	3,948	3,939
Total Uniform Strength	4,746	4,940	4,904	5,111	5,149
Chief Administrative Officer- Policing	1	1	1	0	1
Director	4	4	4	4	4
Parking Enforcement Officer	308	261	270	290	310
Court Officer	255	251	280	274	279
Document Server	14	11	12	16	16
Communications Operator	217	222	230	220	218
Cadets-in-Training	294	54	131	72	223
Custodial Officer	4	5	6	5	5
Other Civilians	1,190	1,226	1,228	1,241	1,219
Total Civilian Strength	2,287	2,035	2,162	2,122	2,275
Grand Total	7,033	6,975	7,066	7,233	7,424

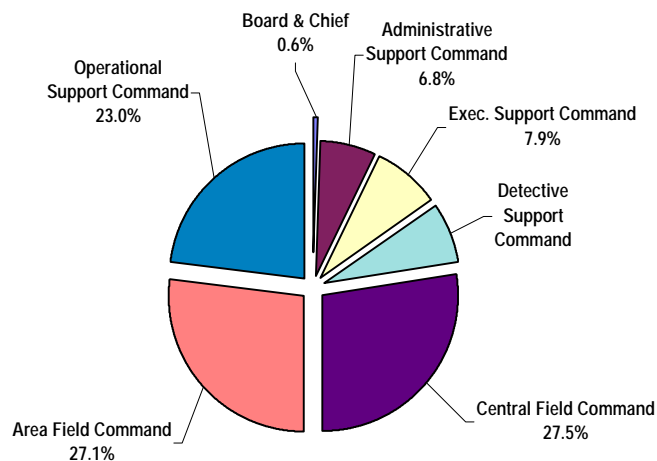
Auxiliary personnel**	321	294	271	496	302
Temporary Employee	14	22	51	74	92
School Crossing Guard	636 [☞]	686 [☞]	704 [☞]	711 [☞]	697 [☞]
Part-time Court Officer	197	191	179	154	164
Part-time Employee - other	64	51	40	56	57

* As of December 31, 2000.

** Includes other volunteers

☞ Includes spares

Distribution of Personnel by Branches of the Service



Personnel by Division And Field Command (Actual)**

	Superintendent and Above	Staff Inspector	Inspector	Staff Sergeant	Detective Sergeant	Sergeant	Detective	Police Constable	Uniform Strength	Civilian Strength	Total Strength	School Crossing Guard***
CENTRAL FIELD COMMAND HQ	1	0	0	1	2	0	4	26	34	4	38	0
11 Division	0	1	0	6	1	14	14	136	172	11	183	33
12 Division	1	0	1	6	1	15	10	140	174	11	185	44
13 Division	0	1	0	6	1	15	8	139	170	11	181	49
14 Division	1	2	0	6	3	30	30	291	363	20	383	52
51 Division	1	0	1	6	1	20	14	172	215	12	227	22
52 Division	1	0	2	7	3	28	30	306	377	26	403	16
53 Division	0	1	0	6	1	18	8	133	167	11	178	42
55 Division	1	0	1	6	2	19	19	195	243	20	263	64
Central Field Command*	6	5	5	50	15	159	137	1,538	1,915	126	2,041	322
AREA FIELD COMMAND HQ	0	0	0	1	2	1	4	33	41	4	45	0
21 Division	0	1	0	6	1	11	9	80	108	6	114	18
22 Division	0	1	0	6	1	14	11	113	146	11	157	40
23 Division	1	0	1	6	1	13	13	144	179	12	191	45
31 Division	1	1	1	6	1	18	17	199	244	13	257	39
32 Division	0	0	1	7	1	19	16	189	233	13	246	47
33 Division	0	1	0	6	1	15	11	128	162	11	173	39
41 Division	1	0	1	6	2	22	18	249	299	16	315	50
42 Division	1	0	1	7	1	20	24	252	306	21	327	55
54 Division	0	1	0	6	2	17	9	137	172	13	185	42
Area Field Command*	4	5	5	57	13	150	132	1524	1890	120	2010	375

* Includes those assigned to Command Headquarters.

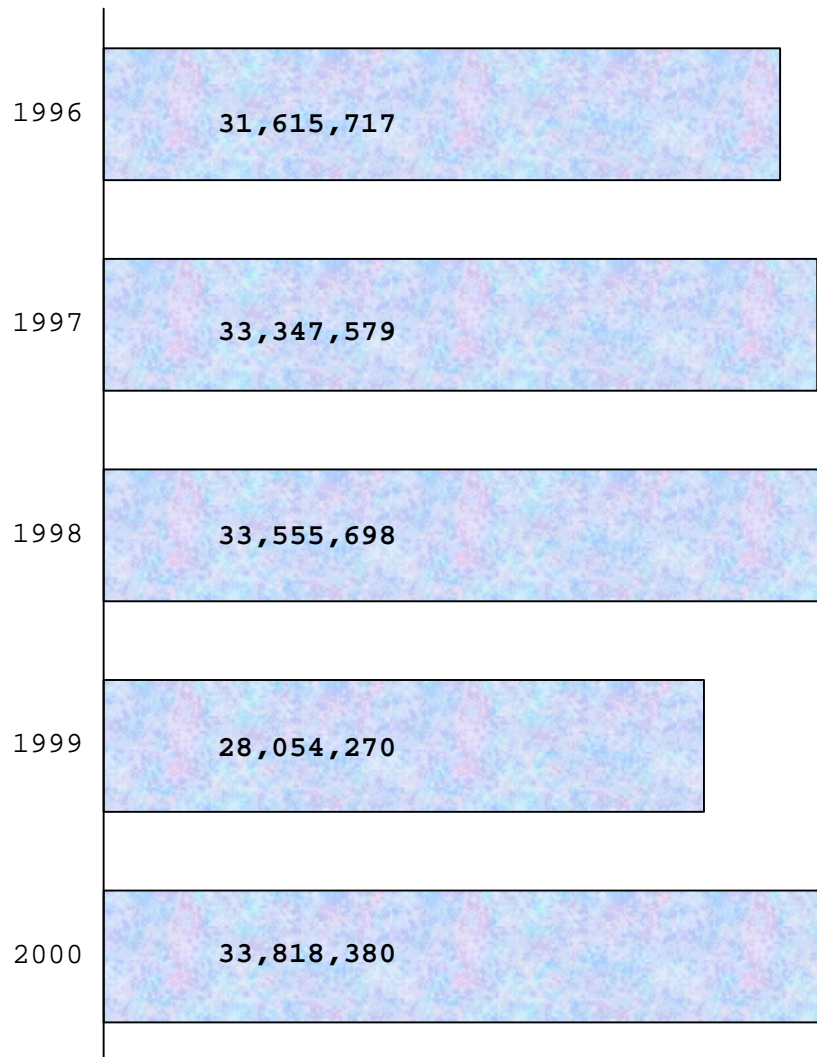
** - As of December 31, 2000

Does not include temporary and part-time civilian members.

*** - Includes spares

	1996	1997	1998	1999	2000
Cars	1,118	1,122	1,161	1,191	1,193
Motorcycles	131	129	129	130	133
Other	145	149	143	139	149
Total Vehicles	1,394	1,400	1,433	1,460	1,475
Boats	18	18	18	19	19
Horses	24	23	25	23	25

Distance Travelled by Police Vehicles (Kilometres)



Classification of Incoming Calls

TPS 2000 Statistical Report

Year	Calls Received at Communications Centre			Dispatched Calls	Other Calls**
	Emergency*	Non-Emergency☐	Total		
1996	813,246	1,064,573	1,877,819	746,135	1,131,684
1997	839,366	894,134	1,733,500	851,236	882,264
1998	852,116	889,838	1,741,954	841,894	900,060
1999	900,717	876,407	1,777,124	801,746	975,378
2000	973,249	849,191	1,822,440	837,219	985,221

* 9-1-1 Emergency Calls

** Advised, transferred, or no action taken.

☐ Includes Non-emergency calls, Alarms, Parking Complaints, TTC, RIDE program, and other calls which include Administration, Internal etc.

Language Line Service (Calls made in languages other than English)

Number of Calls and top 10 ranks in 1996-2000*

Language	1996	1997	1998	1999	2000
Chinese	516 (1)	523 (1)	857 (1)	877 (1)	874 (1)
Spanish	179 (2)	223 (2)	254 (2)	236 (3)	251 (2)
Vietnamese	166 (5)	213 (3)	203 (3)	145 (4)	162 (3)
Italian	171 (4)	147 (4)	171 (4)	274 (2)	145 (5)
Portuguese	175 (3)	141 (5)	140 (5)	126 (5)	151 (4)
Polish	147 (6)	110 (6)	124 (6)	102 (10)	86 (10)
French	68 (9)	77 (7)	112 (7)	114 (6)	120 (9)
Tamil	61 (10)	56	102 (8)	107 (8)	141 (6)
Korean	79 (7)	70 (8)	99 (9)	110 (7)	121 (8)
Punjabi	75 (8)	65 (9)	98 (10)	90	73
Russian	43	60 (10)	78	103 (9)	122 (7)
Farsi	30	55	66	63	32
Greek	29	44	35	37	24
Hungarian	24	20	31	58	40
Arabic	35	24	29	42	13
Somali	15	25	25	21	27
Japanese	12	16	22	12	40
Hindi	22	8	18	18	31
Urdu	7	5	17	9	12
German	8	2	15	12	2
Croatian	8	24	8	6	9
Turkish	5	6	10	9	8
Total**	1923	1998	2626	2664	2578

* Top Ten ranking shown in bracket

** Including other non-English languages

In the year 2000, calls were made in 46 languages other than English.

Public Complaints**

TPS 2000 Statistical Report

Complaints Received	1993	1994	1995	1996	1997
Physical Assault	367	284	299	219	169
Police Procedure	413	405	397	132	72
Misuse of Authority	173	196	185	399	342
Verbal Abuse	263	182	201	160	105
Total Complaints Received	1,216	1,067	1,082	910	720*
Percentage change	-4.1	-12.3	+1.4	-15.9	-20.9

* Includes 32 complaints which are not included in the four (4) general classifications in the table above. These complaints were received after proclamation of amendments to the Police Services Act on November 27, 1997. Eleven (11) of these complaints were classified as serious conduct, twenty (20) as less serious conduct and one (1) as a complaint about service.

Dispositions:

Chief's Decision

No Action Warranted	387	512	308	322	245
Criminal Charges	10	6	3	0	0
Referred to Police Complaint Board	2	4	0	0	0
Disciplinary Charge	14	3	0	7	9
Counsel or Caution	6	2	6	10	1
Frivolous, Vexatious or Bad Faith	102	140	112	127	162

Complaints Bureau Dispositions

Informally Resolved	37	26	12	2	3
Withdrawn	475	407	445	364	276
Change to Inquiry	24	51	81	184	219
Six Month Limitation	43	64	57	70	31
Third Party	11	7	13	5	8
Not Within Jurisdiction of the Act/Bureau	13	12	15	33	11

Total Dispositions	1,124	1,234	1,052	1,124	965
---------------------------	--------------	--------------	--------------	--------------	------------

** On November 27, 1997, Bill 105 (RSO) "A Act to review the Partnership between the province, municipalities and the police and to enhance community safety" was proclaimed by the Legislative Assembly. The amendments in Bill 105 revised the Police Services Act and in particular created a new system to deal with the internal discipline and public complaints.

Continued on next page

Public Complaints

Complaints Received	1998	1999	2000
Conduct - Less Serious	438	408	479
Conduct - Serious	158	205	252
Policy	12	9	12
Services	11	7	34
Total Complaints Received	619	629	819*

* Includes 35 complaints with no specific allegation, and 7 other complaints

Dispositions	1998	1999	2000
Frivolous	71	27	56
Informal Resolution	96	82	146
Made in Bad Faith	14	13	18
Misconduct Identified/Hearing	2	2	1
No Further Action/Final Report	141	175	180
Non Jurisdictional/Other	10	10	39+
Not Directly Affected	19	27	29
Over Six Months	44	39	32
Unit Commander's Attention/Personnel Documentation	4	5	14
Vexatious	9	0	2
Withdrawn	117	132	183
Total Dispositions	527	512	700++

+ Includes multiple jurisdiction(more than one police service), Non-jurisdictional complaints(subject officer retired or resigned) and complaints not signed by complainants.

++ Total does not include outstanding complaints that have not been adjudicated.

Category of Allegations**	2000
Discreditable Conduct	731
Insubordination	9
Neglect of duty	294
Deceit	15
Breach of Confidence	1
Corrupt practice	10
Unlawful or Unnecessary exercise of authority	299
Damage to clothing or equipment	1
Consuming drug or alcohol in a manner prejudicial to duty	3
Total Allegations	1363→†

** Categorization is different from previous years; refer to 1999 Report for previous years' figures

→† Total incorporates complaints where there are multiple allegations.

Community Based and Miscellaneous Policing Statistics

Community Information/ Crime Prevention - Community Relations

	1996	1997	1998	1999	2000
Communities involved in Neighbourhood Watch	942	956	962	742	772
Homes involved in Neighbourhood Watch	357,852	357,891	358,416	392,528	408,406
Crime Prevention Presentations	1,760	2,062	1,904	1,916	1,880
Community Relations Presentations	1,844	1,665	2,873	4,898	4,369
Substance Abuse/Safety Presentations	X	1,222	1,254	1,106	1115

X See 1996 Annual Report. Due to community based policing, new programs were added; some programs consolidated and hence no longer comparable with previous years.

Intelligence Services

Hate/Bias Crime Occurrences	175	187	228	292	204
-----------------------------	-----	-----	-----	-----	-----

R.I.D.E.(Reduced Impaired Driving Every where) Year Round Statistics - Traffic Services

Vehicles Stopped	117,144	103,695	98,426	116,517	115,112
Charges Laid	276	136	79	144	198

Alarm Program - Communications Support

Valid Alarms	2,879	1,651	1,225	1,084	885
False Alarms	57,875	27,981	27,327	27,911	27,704

Victim Services

Total Incidents	4,129	5,056	4,967	5,553	7,175
Telephone Assisted	3,806	4,587	4,615	5,175	6,846
On Scene	479	469	352	378	638
Domestic Related	2,792	2,794	2,461	3,440	4,807

Other Programs - Industrial Liaison

Labour disputes attended	31	30	25	35	37
Potential dispute contacts	27	21	46	29	10

Volunteer Resources (Hours Volunteered)

	37,914	43,869	39,282	43,893	48,236
--	--------	--------	--------	--------	--------

Crime Stoppers*

Arrests	273	190	251	388	323
Charges Laid	740	727	642	1,230	694

* Toronto statistics only

See next page

Community Relations/Community Liaison/Miscellaneous

Type of Presentation	Number of Presentations	Persons Attending
Speaking engagements	170	7,038
School Lectures	824	21,911
Lectures to Reliefs/Platoons	243	3,067
Speaking Engagements - Other	243	22,522
Community Meeting Attended	1,203	54,458
Station Tours	215	Not Available
Media Relations	135	219
Community Outreach	352	412,942
External Presentation	161	3,746
Internal Presentation/Lectures	121	1,078
External Meeting/Lectures	372	1,640
Internal Meeting	191	542
Divisional Assistance/Support Lectures	87	1,330
Conference/Seminars	11	3,739
Other Duties	41	1,226
Total	4,369	535,458

Substance Abuse/Safety Presentations

Type of Presentation	Number of Presentations
Streetproofing	250
Alcohol and Drugs	223
Law	149
Sexual Abuse	33
Abuse of elderly	107
Family violence	353
Total	1,115

Crime Prevention

Type of Presentation	Number of Presentations	Persons Attending
Neighbourhood Watch	125	5,132
Home security/High-rise security	245	7,389
Office security	259	2,036
Personal safety	618	13,928
Senior citizen safety	134	5,274
Victims of crime	214	540
Other	285	36,210
Total	1,880	70,509
Communities involved in Neighbourhood Watch		772
Homes involved in Neighbourhood Watch		408,406
Block Parents screened		277
Banks and Business premises visited		2,505
Insecure premises contacted		54
Serious break and enter call-backs		1,111
Crime prevention pamphlets distributed		95,315

General Data by Division and Field Command

TPS 2000 Statistical Report

	Estimated Population	Area (sqkm)	Projected Expenditures(\$)	Dispatched calls	Motor Vehicles		Bicycles Stolen	Value of Property (\$)*
					Stolen	Recovered		
11 Division	100,943	15.9	12,461,564	31,819	335	228	152	3,456,955
12 Division	94,405	18.5	12,362,983	36,908	442	296	82	3,381,211
13 Division	141,758	19.2	12,030,852	38,111	506	363	199	5,754,208
14 Division	150,713	15.7	26,786,782	66,519	544	383	390	8,406,428
51 Division	66,460	11.4	15,387,318	38,385	377	258	222	4,180,831
52 Division	75,130	12.4	28,521,121	68,175	560	411	589	57,964,049
53 Division	140,273	26.0	12,080,340	32,183	405	254	246	9,389,340
55 Division	118,930	17.0	17,406,284	42,155	477	350	345	5,895,866
Central Command	888,612	136.1	137,037,244	354,255	3,646	2,543	2,225	98,428,888
21 Division	59,671	16.8	7,976,420	18,320	247	203	84	2,093,825
22 Division	132,555	50.1	11,013,439	30,312	687	486	174	6,432,585
23 Division	161,315	56.6	13,599,750	40,281	1,275	886	172	10,253,542
31 Division	195,886	47.7	17,753,173	52,534	1,321	848	140	11,341,121
32 Division	202,038	62.6	16,720,620	48,900	966	559	269	14,086,476
33 Division	190,241	53.0	11,759,640	36,528	549	396	130	11,164,452
41 Division	232,178	60.1	21,106,639	63,290	1,337	1,018	218	16,571,190
42 Division	368,992	127.2	22,817,862	69,665	1,638	1,256	316	13,469,661
54 Division	134,066	20.4	12,255,956	35,512	400	288	161	3,668,782
Area Command	1,676,942	494.5	135,003,499	395,342	8,420	5,940	1,664	89,081,634
Toronto	2,565,554	630.6	272,040,743†	837,219††	12,066	8,483◆	3,889	187,510,522

* Does not include the value of motor vehicles and bicycles, but includes frauds.

†† Includes 11,947 calls handled by units other than divisions such as Highway Patrol, etc. and 75,675 Tag Agency Dispatched Events.

† Includes Division totals only.

The grand total gross expenditure of the Service was \$579,699,200.

◆ Stolen and recovered in 2000. For example 335 motor vehicles were stolen from 11 division in 2000 and out of which 228 were recovered as of 2000/12/31.

Toronto Highlights - Traffic Collisions*

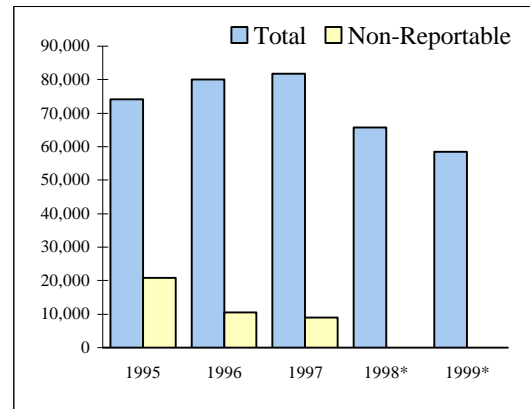
TPS 2000 Statistical Report

Source for all figures: Toronto Traffic Data Centre and Safety Bureau

Total Collisions (Includes Non-Reportable Collisions)

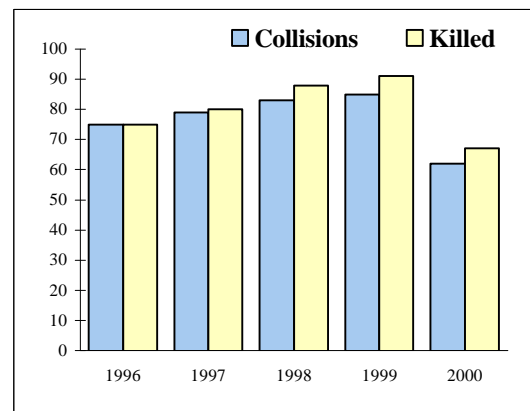
Year	Total	% Change	Non-Reportable
1995	74,137	-1.0	20,839
1996	79,992	7.9	10,547
1997	81,692	2.1	9,064
1998*	65,765	-19.5	n/a
1999*	58,450	-11.1	n/a

*figure does not include Non-Reportable collisions.



Fatal Collisions and Persons Killed

Year	Collisions	% Change	Killed
1996	75	10.1	75
1997	79	5.3	80
1998	83	5.1	88
1999	85	2.4	91
2000	62	-27.1	67

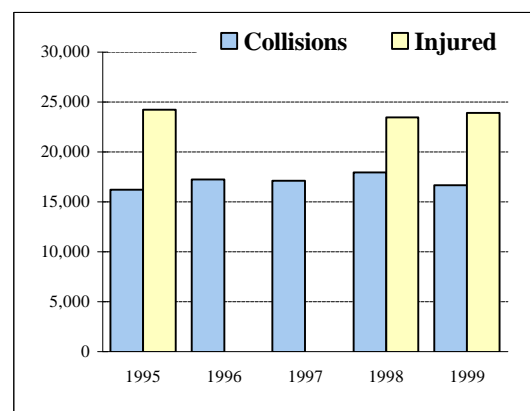


Injury Collisions and Persons Injured

Year	Collisions	% Change	Injured
1995	16,247	+16.9	24,255
1996	17,256	6.2	n/a
1997	17,091	-1.0	n/a
1998	17,979	5.2	23,455
1999	16,662	-7.3	23,895

Due to technical reasons complete figures are not available.

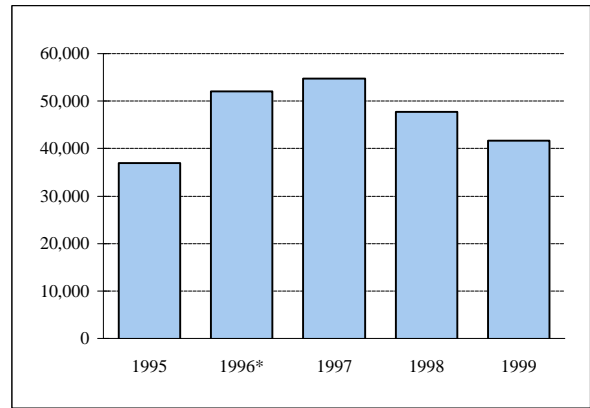
General Note: Some 2000 figures, were not available at press time.



Property Damage Collisions

Year	Collisions	% Change
1995	36,982	-7.0
1996*	52,097	40.9
1997	54,787	5.2
1998	47,734	-12.9
1999	41,703	-12.6

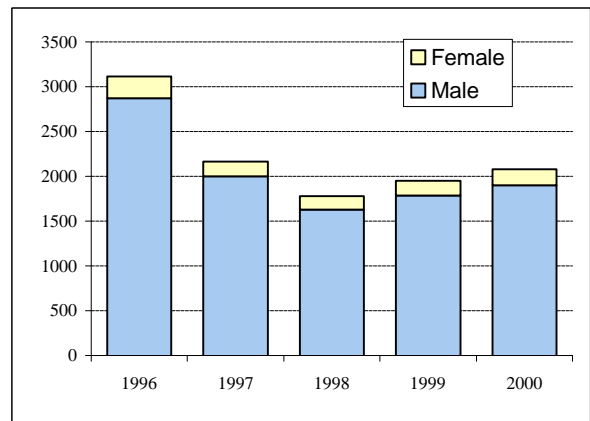
* The sharp increase from 1995 is the result of the change in the method of accident reporting.
 Source: Toronto Traffic Data Centre and Safety Bureau



Drinking and Driving Statistics*

Year	Total Tested	Male	Female
1996	3,113	2873	240
1997	2,161	1999	162
1998	1,776	1629	147
1999	1,952	1788	164
2000	2,078	1901	177

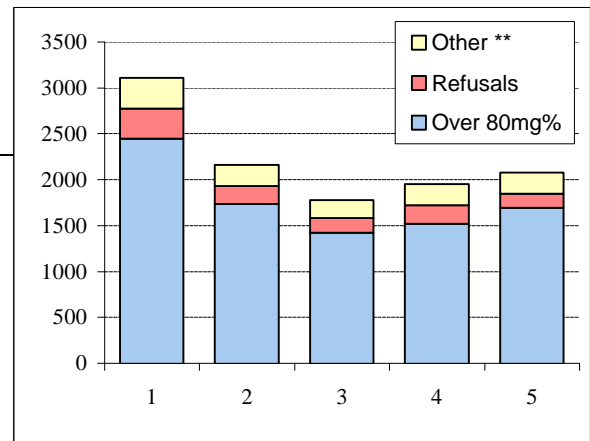
* These statistics represent Breath Alcohol testing done within Toronto by the Toronto Police Service



Drinking and Driving Statistics

Year	Total Tested	Over 80mg%	Refusals	Other **
1996	3,113	2449	329	335
1997	2,161	1737	196	228
1998	1,776	1422	159	195
1999	1,952	1523	199	230
2000	2,078	1691	154	233

** Includes individuals stopped, who were under the legal limit, or where no charges were laid



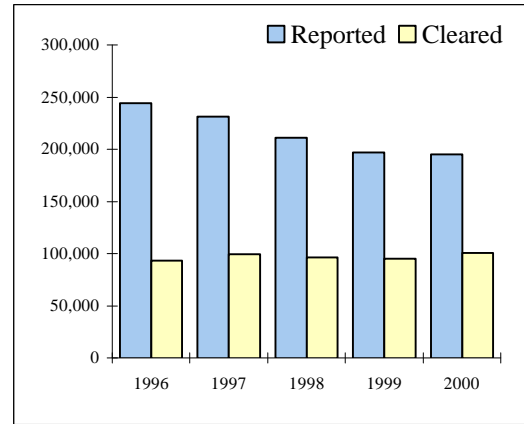
General Note: Some 2000 figures were not available at press time.

Toronto Highlights - Criminal Code Offences

TPS 2000 Statistical Report

Total Criminal Code Offences*

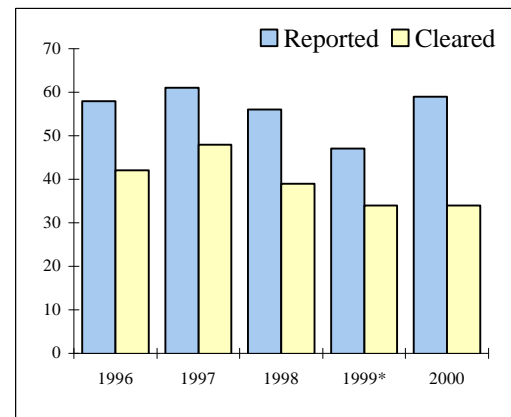
Year	Reported	% Change	Rate per 100,000 of Population	Cleared	% Cleared
1996	243,872	-3.8	9,899.5	93,256	38.2
1997	230,993	-5.3	9,287.3	99,142	42.9
1998	211,297	-8.5	8,411.2	96,173	45.5
1999	196,880	-6.8	7,756.7	95,237	48.4
2000	195,360	-0.8	7,614.7	100,367	51.4



*Excluding Criminal Code traffic offences. Statistical Reports published prior to 1997 included Criminal Code traffic offences. Crime rates are updated based on updated population.

Homicides

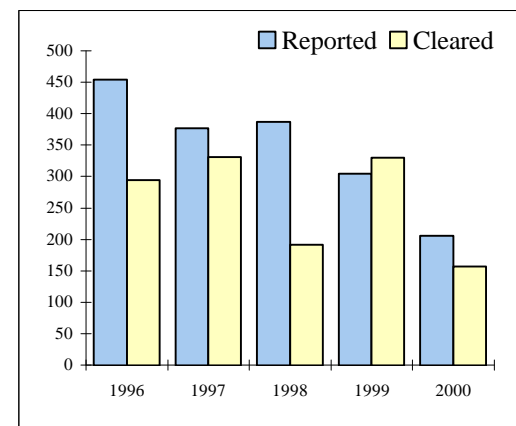
Year	Reported	% Change	Rate per 100,000 of Population	Cleared	% Cleared
1996	58	-1.7	2.4	42	73.7
1997	61	5.2	2.5	48	78.7
1998	56	-8.2	2.2	39	69.6
1999*	47	-16.1	1.9	34	72.3
2000	59	25.5	2.3	34	57.6



*Updated

Robberies (Financial Institutions only)

Year	Reported	% Change	Rate per 100,000 of Population	Cleared	% Cleared
1996	454	+8.6	18.4	294	64.8
1997	377	-17.0	15.2	331	87.8
1998	387	+2.7	15.4	191	49.4
1999	304	-21.4	12.0	330	108.6
2000	206	-32.2	8.0	157	76.2

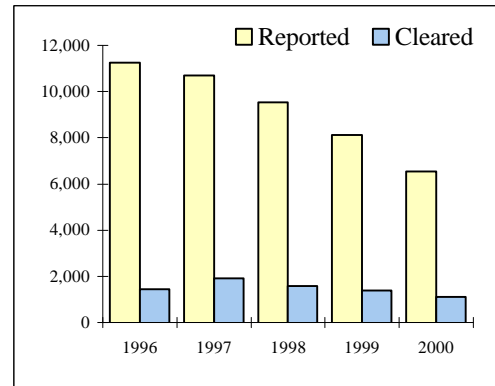


Toronto Highlights - Criminal Code Offences

TPS 2000 Statistical Report

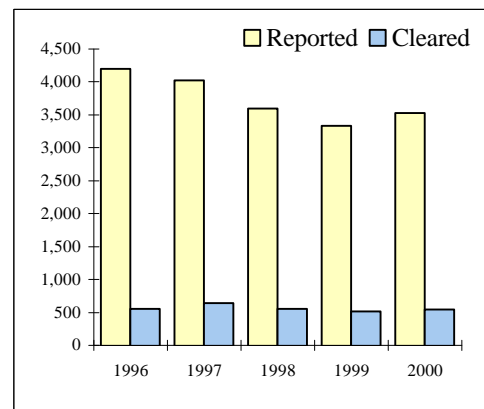
Break and Enter - Houses

Year	Reported	% Change	Rate per 100,000 of Population	Cleared	% Cleared
1996	11,254	+4.8	456.8	1,436	12.8
1997	10,704	-4.9	430.4	1,921	17.9
1998	9,528	-11.0	379.3	1,569	16.5
1999	8,109	-14.9	319.5	1,378	17.0
2000	6,540	-19.3	254.9	1,116	17.1



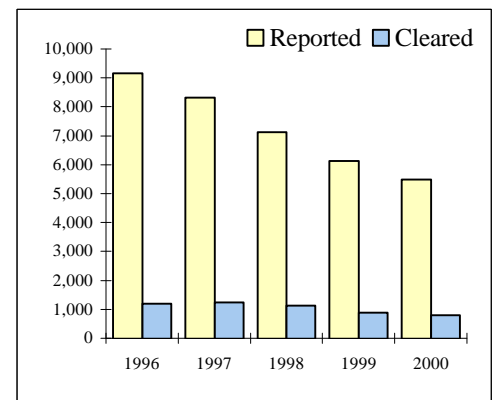
Break and Enter - Apartments

Year	Reported	% Change	Rate per 100,000 of Population	Cleared	% Cleared
1996	4,195	-10.6	170.3	551	13.1
1997	4,026	-4.0	161.9	638	15.8
1998	3,597	-10.7	143.2	556	15.5
1999	3,336	-7.3	131.4	518	15.5
2000	3,526	5.7	137.4	541	15.3



Break and Enter - Business Premises

Year	Reported	% Change	Rate per 100,000 of Population	Cleared	% Cleared
1996	9,150	-8.3	371.4	1,192	13.0
1997	8,319	-9.1	334.5	1,232	14.8
1998	7,127	-14.3	283.7	1,128	15.8
1999	6,135	-13.9	241.7	887	14.5
2000	5,487	-10.6	254.9	792	14.4

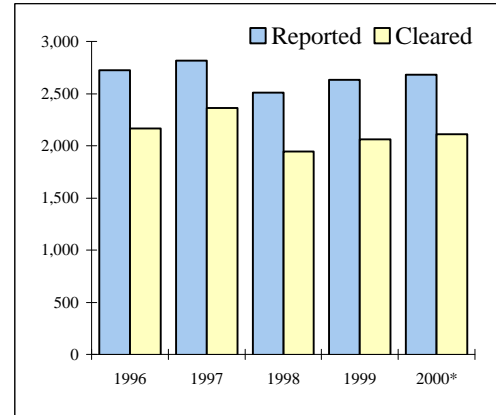


Toronto Highlights - Criminal Code Offences

TPS 2000 Statistical Report

Sexual Assaults

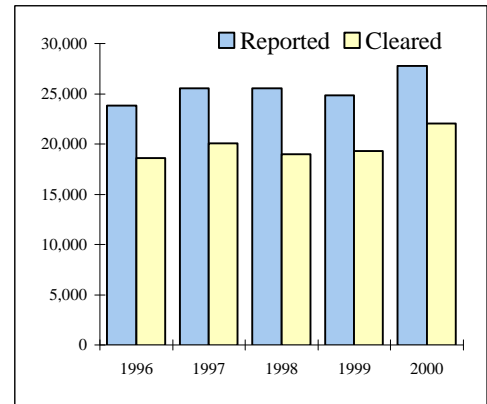
Year	Reported	% Change	Rate per 100,000 of Population	Cleared	% Cleared
1996	2,725	-9.8	110.6	2,164	79.4
1997	2,818	3.4	113.3	2,364	83.9
1998	2,510	-10.9	99.9	1,942	77.4
1999	2,634	4.9	103.8	2,059	78.2
2000*	2,679	1.7	104.4	2,108	78.7



* Includes 470 "non-assaultive" sexual offences (e.g. Invitation to Sexual Touching; Sexual Exploitation etc.)

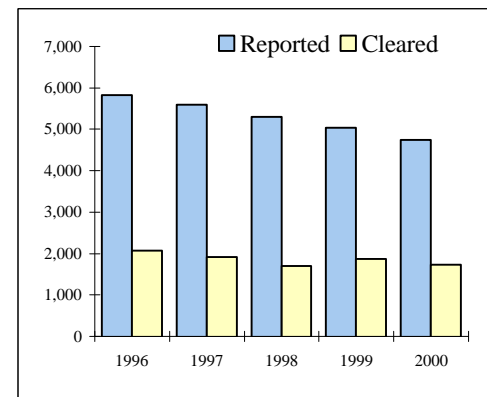
Non-Sexual Assaults

Year	Reported	% Change	Rate per 100,000 of Population	Cleared	% Cleared
1996	23,833	-8.2	967.5	18,576	77.9
1997	25,568	7.30	1,028.0	20,082	78.5
1998	25,517	-0.2	1,015.8	19,009	74.5
1999	24,821	-2.7	977.9	19,331	77.9
2000	27,770	11.9	1,082.4	22,010	79.3



Robberies (Including financial institution)

Year	Reported	% Change	Rate per 100,000 of Population	Cleared	% Cleared
1996	5,833	-1.8	236.8	2,063	35.4
1997	5,593	-4.1	224.9	1,920	34.3
1998	5,297	-5.3	210.9	1,705	32.2
1999	5,042	-4.8	198.7	1,874	37.2
2000	4,745	-5.9	185.0	1,732	36.5



VIOLENT CRIME, PROPERTY CRIME, OTHER CRIME AND CRIMINAL CODE TRAFFIC OFFENCES

YEAR	VIOLENT CRIME ²⁴			PROPERTY CRIME			OTHER CRIME			CRIMINAL CODE TRAFFIC OFFENCES**			TOTAL CRIMINAL CODE OFFENCES		
	OFFENCE	CHANGE %	CLEAR* %	OFFENCE	CHANGE %	CLEAR* %	OFFENCE	CHANGE %	CLEAR* %	OFFENCE	CHANGE %	CLEAR* %	OFFENCE	CHANGE %	CLEAR* %
1996	33,069	-6.9	70.6	144,600	-0.5	22.3	66,203	-8.8	56.8	13,893	-42.5	52.0	257,765	-7.2	39.0
1997	34,663	4.8	71.8	133,775	-7.5	25.9	62,555	-5.5	63.3	3,818	-72.5	99.6	234,811	-8.9	43.8
1998	33,926	-2.1	68.2	116,278	-13.1	29.2	61,093	-2.3	63.9	3,640	-4.7	99.0	214,937	-8.5	46.4
1999	33,121	-2.4	71.7	105,029	-9.7	30.2	58,730	-3.9	67.7	3,802	4.5	99.3	200,682	-6.6	49.3
2000	35,837	8.2	73.5	97,138	-7.5	31.5	62,385	6.2	69.5	4,002	5.3	99.9	199,362	-0.7	52.3

* Clearance rate

** 1996 figure includes Criminal Code 'Fail to remain' offences for about six months.

1997-2000 figures do not include Criminal Code 'Fail to remain' offences.

Categories of Crime:

- (1) **Violent crime** includes homicide and homicide related offences, sexual assaults, sexual offences, non-sexual assaults, abduction, and robberies.
- (2) **Property crime** includes break and enter, all types of thefts, possession of stolen goods, and fraud.
- (3) **Other crime** includes all other non-traffic Criminal Code offences not covered in categories (1) and (2).
- (4) **Traffic offences** include all Criminal Code traffic offences.
- (5) **Total Criminal Code offences** include all the above four categories.

²⁴ The definition for violent crime was revised in 1996.

Statistics published prior to 1996 included weapons offences in 'Violent Crime'.

Starting from 1996 publication, weapons offences are included in 'Other Crime'.

VIOLENT CRIME, PROPERTY CRIME, OTHER CRIME AND CRIMINAL CODE TRAFFIC OF TPS 2000 Statistical Report

UNIT	VIOLENT CRIME			PROPERTY CRIME			OTHER CRIME			CRIMINAL CODE TRAFFIC OFFENCES**			TOTAL CRIMINAL CODE OFFENCES		
	OFFENCE	RATE*	CLEAR %	OFFENCE	RATE*	CLEAR %	OFFENCE	RATE*	CLEAR %	OFFENCE	RATE*	CLEAR %	OFFENCE	RATE*	CLEAR %
11	1348	1,335	74.9	2940	2,913	24.5	2,602	2,578	70.0	181	179	100.0	7,071	7,005	52.8
12	1775	1,880	82.9	2994	3,171	34.1	3,053	3,234	75.6	206	218	97.6	8,028	8,504	62.3
13	1575	1,111	76.7	3588	2,531	19.2	2,419	1,706	57.6	158	111	100.0	7,740	5,460	44.5
14	3137	2,081	75.2	7416	4,921	27.8	4,807	3,190	67.5	404	268	99.8	15,764	10,460	51.2
21	846	1,418	86.8	1723	2,887	29.8	1,810	3,033	72.9	167	280	100.0	4,546	7,618	60.1
22	932	703	69.3	4561	3,441	21.0	2,652	2,001	66.5	233	176	99.6	8,378	6,320	43.0
23	2223	1,378	71.0	6595	4,088	28.2	3,236	2,006	56.7	284	176	101.4	12,338	7,648	45.0
31	2929	1,495	74.1	6475	3,305	23.2	3,974	2,029	62.5	264	135	99.6	13,642	6,964	47.0
32	1776	879	70.7	7162	3,545	28.5	3,867	1,914	63.1	212	105	99.5	13,017	6,443	45.7
33	1372	721	76.6	4600	2,418	32.6	2,268	1,192	62.2	136	71	100.0	8,376	4,403	48.9
41	3833	1,651	70.9	8577	3,694	29.7	5,683	2,448	68.2	569	245	99.6	18,662	8,038	52.0
42	4121	1,117	76.3	9421	2,553	51.1	5,576	1,511	82.2	341	92	98.8	19,459	5,274	66.2
51	1958	2,946	71.3	3832	5,766	33.8	3,663	5,512	77.0	137	206	100.7	9,590	14,430	58.9
52	3143	4,183	61.4	14556	19,374	29.1	9,253	12,316	78.1	178	237	101.7	27,130	36,111	50.0
53	957	682	72.7	4175	2,976	61.0	1,722	1,228	79.6	130	93	100.8	6,984	4,979	67.9
54	1726	1,287	74.1	3140	2,342	22.2	2,458	1,833	62.2	168	125	99.4	7,492	5,588	49.0
55	2186	1,838	78.2	5383	4,526	30.4	3,342	2,810	58.6	234	197	101.3	11,145	9,371	49.7
Toronto	35,837	1,397	73.5	97,138	3,786	31.5	62,385	2,432	69.5	4,002	156	99.9	199,362	7,771	52.3

Categories of Crime:

** Does not include Criminal Code 'Fail to remain' offences.

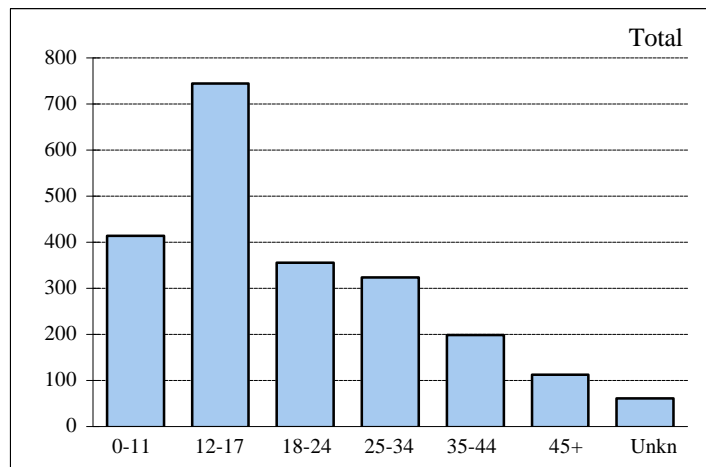
Note: Cleared cases may include offences committed before 2000.

- (1) **Violent crime** includes homicide and homicide related offences, sexual assaults, sexual offences, non-sexual assaults, abduction, and robberies.
- (2) **Property crime** includes break and enter, all types of thefts, possession of stolen goods, and fraud.
- (3) **Other crime** includes all other non-traffic Criminal Code offences not covered in categories (1) and (2).
- (4) **Traffic offences** include all Criminal Code traffic offences.
- (5) **Total Criminal Code offences** include all the above four categories.

*** Rate per 100,000 of population**
No allowance was given to
transient or commuting population.

Sexual Assaults*

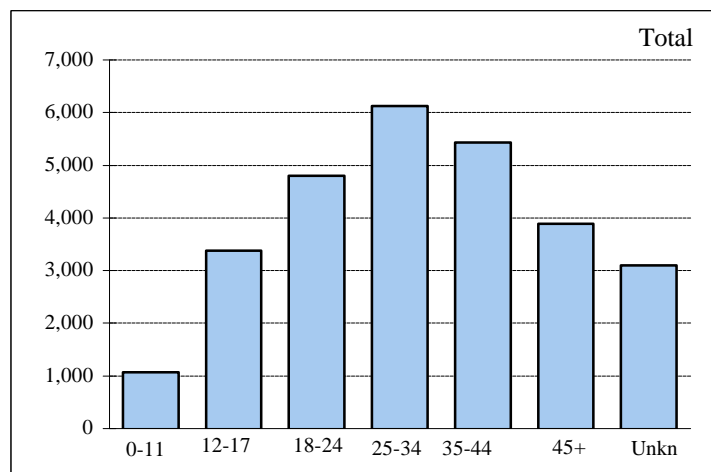
Age	Males	Females	Total	% of Total
0-11	94	320	414	18.74
12-17	60	685	745	33.73
18-24	26	329	355	16.07
25-34	21	302	323	14.62
35-44	16	183	199	9.01
45+	6	106	112	5.07
Unkn	2	59	61	2.76
Total	225	1,984	2,209	100.00



*Includes all types of Sexual Assaults, but excludes 470 Sexual Offences included on page 15.

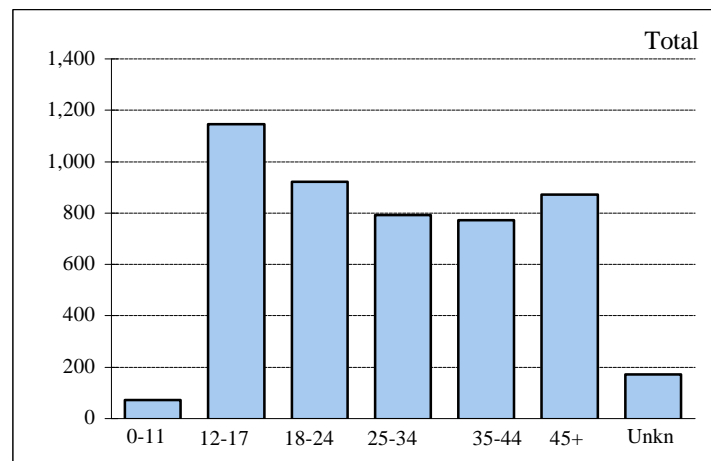
Non-Sexual Assaults

Age	Males	Females	Total	% of Total
0-11	672	392	1,064	3.83
12-17	1,839	1,535	3,374	12.15
18-24	2,224	2,575	4,799	17.28
25-34	2,871	3,250	6,121	22.04
35-44	2,707	2,726	5,433	19.56
45+	2,113	1,770	3,883	13.98
Unkn	2,237	859	3,096	11.15
Total	14,663	13,107	27,770	100.00



Robberies

Age	Males	Females	Total	% of Total
0-11	66	7	73	1.54
12-17	1,043	104	1,147	24.17
18-24	694	227	921	19.41
25-34	536	255	791	16.67
35-44	507	264	771	16.25
45+	461	410	871	18.36
Unkn	125	46	171	3.60
Total	3,432	1,313	4,745	100.00



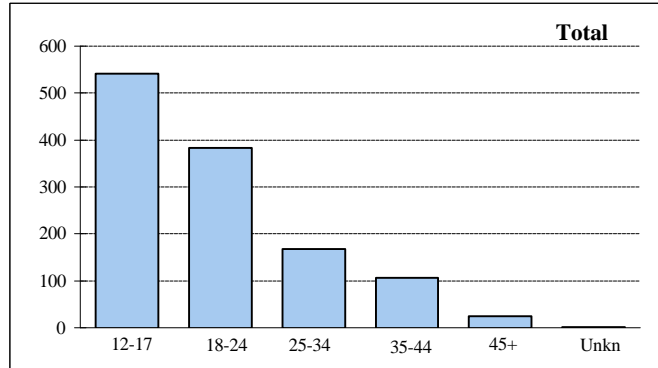
+ These are total offences against persons, not the total number of persons (victims) themselves. In many cases, more than one offence is committed against an individual victim.

Persons Charged by Age and Sex

TPS 2000 Statistical Report

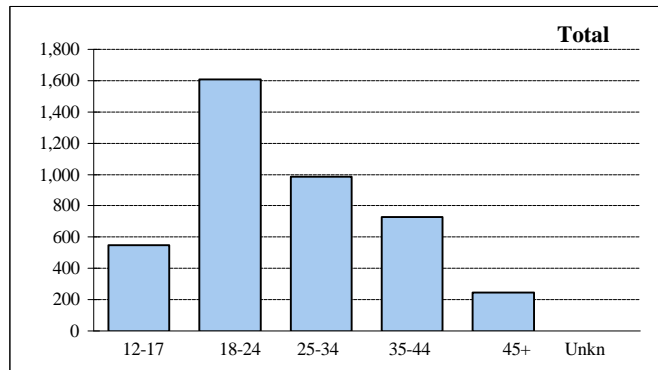
Robberies

Age	Males	Females	Total	% of Total
12-17	498	43	541	44.20
18-24	362	21	383	31.29
25-34	140	28	168	13.73
35-44	90	17	107	8.74
45+	22	2	24	1.96
Unkn	1	0	1	0.08
Total	1,113	111	1,224	100.00



Drug Offences*

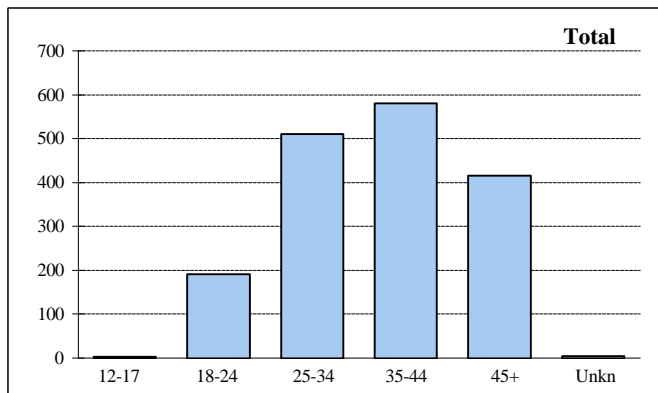
Age	Males	Females	Total	% of Total
12-17	482	68	550	13.35
18-24	1,450	159	1,609	39.05
25-34	871	115	986	23.93
35-44	603	127	730	17.72
45+	210	34	244	5.92
Unkn	1	0	1	0.02
Total	3,617	503	4,120	100.00



* Includes Food & Drug Act and Narcotic Control Act

Drinking and Driving Offences

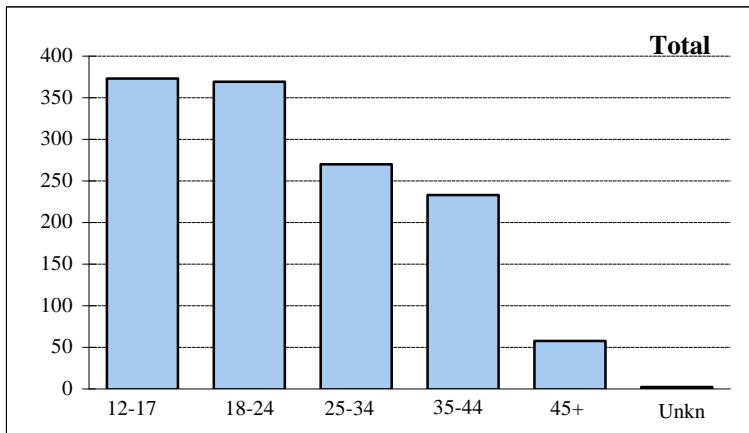
Age	Males	Females	Total	% of Total
12-17	2	1	3	0.18
18-24	182	9	191	11.22
25-34	462	48	510	29.95
35-44	519	61	580	34.06
45+	388	27	415	24.37
Unkn	3	1	4	0.23
Total	1,556	147	1,703	100.00



Persons Charged by Age and Sex

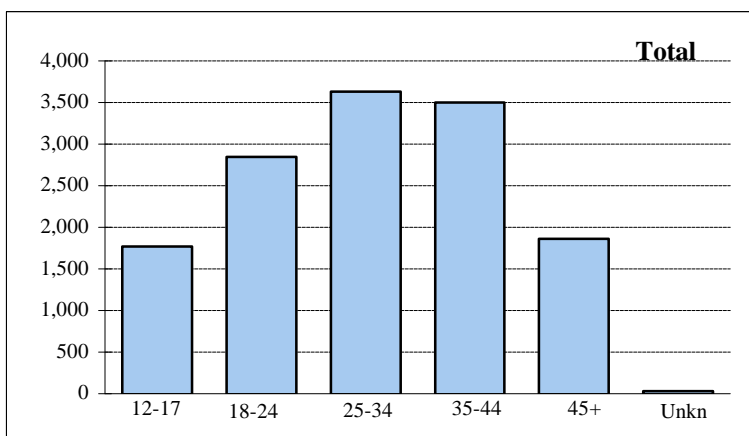
Break and Enters

Age	Males	Females	Total	% of Total
12-17	337	36	373	28.58
18-24	347	22	369	28.28
25-34	249	21	270	20.69
35-44	222	11	233	17.85
45+	49	9	58	4.44
Unkn	2	0	2	0.15
Total	1,206	99	1,305	100.00



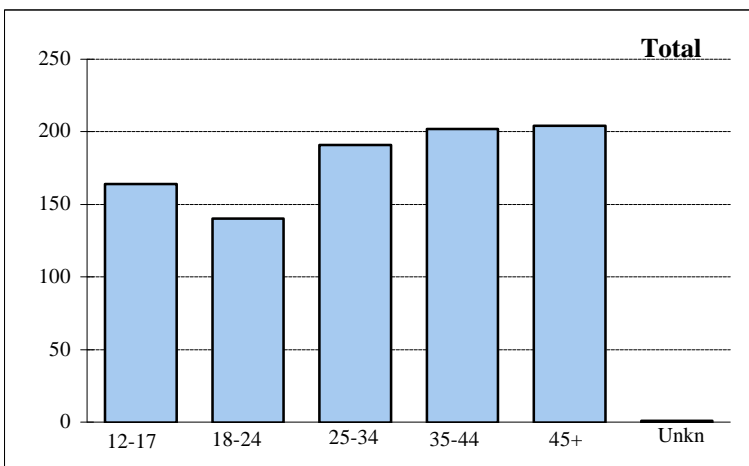
Non-Sexual Assaults

Age	Males	Females	Total	% of Total
12-17	1,269	499	1,768	12.97
18-24	2,367	477	2,844	20.86
25-34	2,916	711	3,627	26.60
35-44	2,886	617	3,503	25.69
45+	1,605	257	1,862	13.66
Unkn	23	7	30	0.22
Total	11,066	2,568	13,634	100.00



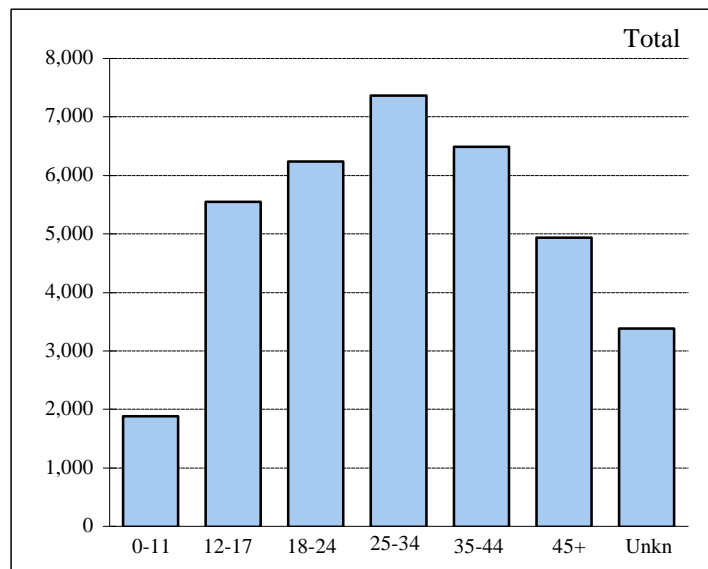
Sexual Assaults

Age	Males	Females	Total	% of Total
12-17	158	6	164	18.18
18-24	135	5	140	15.52
25-34	190	1	191	21.18
35-44	200	2	202	22.39
45+	202	2	204	22.62
Unkn	1	0	1	0.11
Total	886	16	902	100.00



Violent Crime*

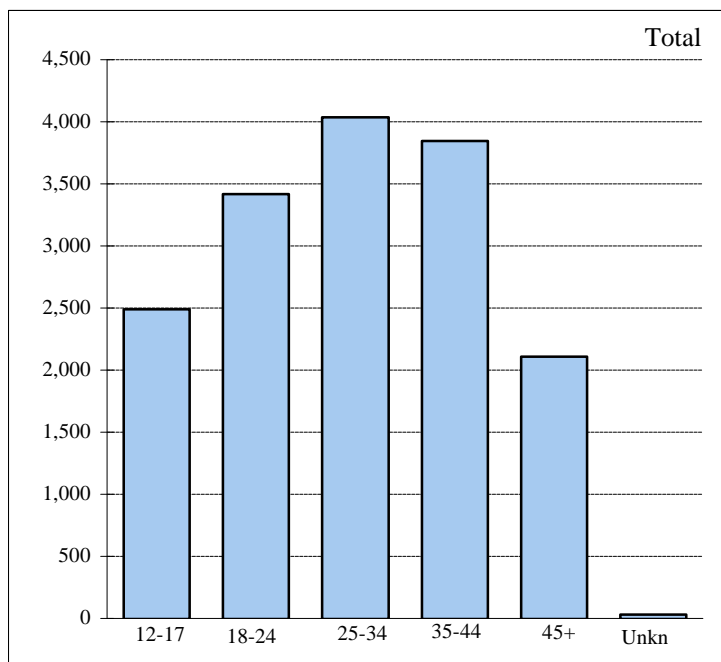
Age	Males	Females	Total	% of Total
0-11	921	961	1,882	5.25
12-17	3,011	2,539	5,550	15.49
18-24	3,032	3,206	6,238	17.41
25-34	3,482	3,888	7,370	20.57
35-44	3,271	3,218	6,489	18.11
45+	2,608	2,323	4,931	13.76
Unkn	2,384	993	3,377	9.42
Total	18,709	17,128	35,837	100.00



* **Violent crime** includes homicide and homicide related offences, sexual assaults, sexual offences, non-sexual assaults, abduction, and robberies.

Persons charged for violent crime

Age	Males	Females	Total	% of Total
12-17	1,936	552	2,488	15.62
18-24	2,914	504	3,418	21.46
25-34	3,287	748	4,035	25.33
35-44	3,205	641	3,846	24.15
45+	1,843	264	2,107	13.23
Unkn	26	7	33	0.21
Total	13,211	2,716	15,927	100.00



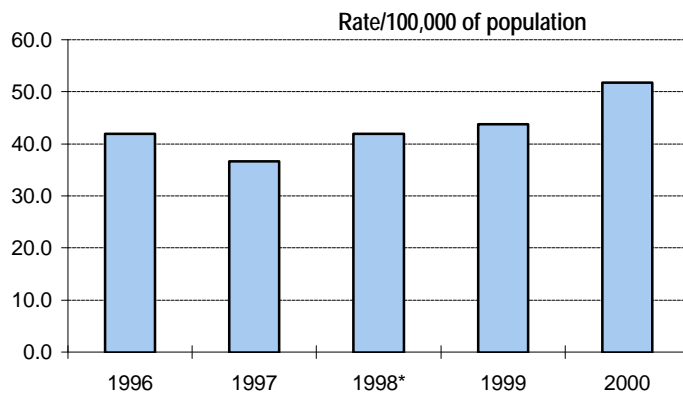
+ These are violent offences against persons and not the number of persons (victims) themselves.

In many cases, more than one offence is committed against an individual victim.

Selected Offences Against Police Officers

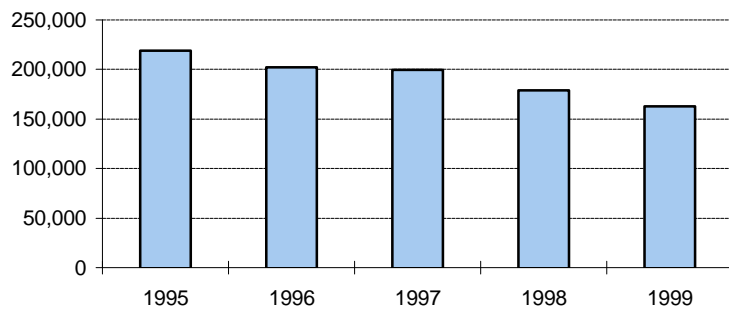
	1996	1997	1998	1999	2000
Murder	0	0	1	0	0
Attempted Murder	4	3	4	2	2
Aggravated Assault	4	2	4	6	4
Assault With Weapon or Causing Bodily Harm	74	55	54	78	102
Assault	144	126	124	95	108
Assault Police Officer	442	383	464	519	585
Assault to Resist Arrest	352	332	395	411	509
Attempt to choke, strangle, etc.	0	1	1	0	0
Point/dangerous use of firearm	4	4	1	9	14
Discharge firearm with intent to prevent arrest	1	0	0	0	0
Dangerous operation of a motor vehicle causing bodily harm	8	4	4	2	4
Total offences	1,033	910	1,052	1,122	1,328

Year	No: of Offences	Rate/100,000 Population	Variance in Rate(%)
1996	1033	41.9	-5.6
1997	910	36.6	-12.6
1998*	1052	41.9	14.5
1999	1122	43.8	4.5
2000	1328	51.8	18.3



Incidents as Reported to Statistics Canada*

Year	Incidents
1995	219,048
1996	202,122
1997	199,923
1998	178,789
1999	162,726



* Total Criminal Code(C.C.), excluding C. C. Traffic incidents.
 Value for 2000 is not available from Statistics Canada at press time;
 the 2001 annual report will contain this information.

Criminal Code Offences Reported and Cleared*- Field Command and Toronto Totals

TPS 2000 Statistical Report

	First Degree Murder	Second Degree Murder	Manslaughter	Attempted Murder	Sexual Assault	Other Assault	Robbery	Break and Enter	Theft of Motor Vehicle**	Theft Over \$5,000	Theft Under \$5,000	Fraud	Offensive Weapons offences	Other Criminal Code	Total Criminal Code Non-Traffic	Criminal Code Traffic†	Total Criminal Code
--	---------------------	----------------------	--------------	------------------	----------------	---------------	---------	-----------------	--------------------------	--------------------	---------------------	-------	----------------------------	---------------------	---------------------------------	------------------------	---------------------

Central Field Command

Reported	21	8	1	60	959	12,578	2,037	6,409	4,045	1,169	27,205	3,425	1,837	32,070	91,824	1,628	93,452
Cleared	9	8	1	42	748	9,814	786	1,157	577	206	6,898	2,736	1,761	23,375	48,118	1,630	49,748
% Cleared	42.9	100.0	100.0	70.0	78.0	78.0	38.6	18.1	14.3	17.6	25.4	79.9	95.9	72.9	52.4	100.1	53.2

Area Field Command

Reported	24	4	1	87	1,250	15,192	2,708	9,227	9,909	1,032	25,472	3,875	2,344	32,411	103,536	2,374	105,910
Cleared	10	5	1	52	919	12,196	946	1,295	1,344	213	7,971	2,864	2,237	22,194	52,247	2,368	54,615
% Cleared	41.7	125.0	100.0	59.8	73.5	80.3	34.9	14.0	13.6	20.6	31.3	73.9	95.4	68.5	50.5	99.7	51.6

Toronto Total

Reported	45	12	2	147	2,209	27,770	4,745	15,636	13,954	2,201	52,677	7,300	4,181	64,481	195,360	4,002	199,362
Cleared	19	13	2	94	1,667	22,010	1,732	2,452	1,921	419	14,869	5,600	3,998	45,569	100,365	3,998	104,363
% Cleared	42.2	108.3	100.0	63.9	75.5	79.3	36.5	15.7	13.8	19.0	28.2	76.7	95.6	70.7	51.4	99.9	52.3

* Cleared cases may include offences reported prior to 2000.

** Include motor cycle and snow vehicle and all attempts.

† Statistics do not include Criminal Code 'Fail to Remain' offences.

Criminal Code Offences Reported and Cleared*- Central Field Command

TPS 2000 Statistical Report

		First Degree Murder	Second Degree Murder	Manslaughter	Attempted Murder	Sexual Assault	Other Assault	Robbery	Break and Enter	Theft of Motor Vehicle**	Theft Over \$5,000	Theft Under \$5,000	Fraud	Offensive Weapons Offences	Other Criminal Code	Total Criminal Code Non-Traffic	Criminal Code Traffic†	Total Criminal Code
11 Division	Reported	1	0	0	2	87	1,098	121	421	393	32	1,702	232	109	2,692	6,890	181	7,071
	Cleared	1	0	0	1	69	848	55	61	48	2	281	169	99	1,915	3,549	181	3,730
	% Cleared	100.0	0.0	0.0	50.0	79.3	77.2	45.5	14.5	12.2	6.3	16.5	72.8	90.8	71.1	51.5	100.0	52.8
12 Division	Reported	1	0	0	4	100	1,481	125	556	481	46	1,391	307	284	3,046	7,822	206	8,028
	Cleared	0	0	0	3	86	1,274	52	95	73	6	412	220	281	2,298	4,800	201	5,001
	% Cleared	0.0	0.0	0.0	75.0	86.0	86.0	41.6	17.1	15.2	13.0	29.6	71.7	98.9	75.4	61.4	97.6	62.3
13 Division	Reported	1	1	0	5	116	1,248	158	723	568	63	1,819	258	145	2,477	7,582	158	7,740
	Cleared	1	1	0	5	94	1,000	63	113	70	12	170	166	140	1,454	3,289	158	3,447
	% Cleared	100.0	100.0	0.0	100.0	81.0	80.1	39.9	15.6	12.3	19.0	9.3	64.3	96.6	58.7	43.4	100.0	44.5
14 Division	Reported	4	2	1	19	167	2,559	320	1,258	605	125	4,468	445	373	5,014	15,360	404	15,764
	Cleared	1	2	1	16	129	2,005	142	259	96	17	866	312	354	3,462	7,662	403	8,065
	% Cleared	25.0	100.0	100.0	84.2	77.2	78.4	44.4	20.6	15.9	13.6	19.4	70.1	94.9	69.0	49.9	99.8	51.2
51 Division	Reported	7	4	0	11	95	1,476	306	568	399	85	2,239	152	301	3,810	9,453	137	9,590
	Cleared	3	4	0	5	72	1,153	108	126	70	21	582	107	293	2,968	5,512	138	5,650
	% Cleared	42.9	100.0	0.0	45.5	75.8	78.1	35.3	22.2	17.5	24.7	26.0	70.4	97.3	77.9	58.3	100.7	58.9

* Cleared cases may include offences reported prior to 2000.

** Include motor cycle and snow vehicle and all attempts.

† Statistics do not include Criminal Code 'Fail to Remain' offences.

Criminal Code Offences Reported and Cleared*- Central Field Command(Cont'd)

TPS 2000 Statistical Report

		First Degree Murder	Second Degree Murder	Manslaughter	Attempted Murder	Sexual Assault	Other Assault	Robbery	Break and Enter	Theft of Motor Vehicle**	Theft Over \$5,000	Theft Under \$5,000	Fraud	Offensive Weapons Offences	Other Criminal Code	Total Criminal Code Non-Traffic	Criminal Code Traffic†	Total Criminal Code
52 Division	Reported	6	0	0	15	187	2,312	571	1,050	580	655	10,265	1,245	365	9,701	26,952	178	27,130
	Cleared	2	0	0	9	137	1,571	173	142	101	46	2,068	1,119	346	7,680	13,394	181	13,575
	% Cleared	33.3	0.0	0.0	60.0	73.3	67.9	30.3	13.5	17.4	7.0	20.1	89.9	94.8	79.2	49.7	101.7	50.0
53 Division	Reported	0	0	0	2	76	679	179	821	449	89	2,299	412	51	1,797	6,854	130	6,984
	Cleared	0	0	0	2	53	560	65	204	58	91	1,782	304	49	1,442	4,610	131	4,741
	% Cleared	0.0	0.0	0.0	100.0	69.7	82.5	36.3	24.8	12.9	102.2	77.5	73.8	96.1	80.2	67.3	100.8	67.9
55 Division	Reported	1	1	0	2	131	1,725	257	1,012	570	74	3,022	374	209	3,533	10,911	234	11,145
	Cleared	1	1	0	1	108	1,403	128	157	61	11	737	339	199	2,156	5,302	237	5,539
	% Cleared	100.0	100.0	0.0	50.0	82.4	81.3	49.8	15.5	10.7	14.9	24.4	90.6	95.2	61.0	48.6	101.3	49.7
Central Command	Reported	21	8	1	60	959	12,578	2,037	6,409	4,045	1,169	27,205	3,425	1,837	32,070	91,824	1,628	93,452
	Cleared	9	8	1	42	748	9,814	786	1,157	577	206	6,898	2,736	1,761	23,375	48,118	1,630	49,748
	% Cleared	42.9	100.0	100.0	70.0	78.0	78.0	38.6	18.1	14.3	17.6	25.4	79.9	95.9	72.9	52.4	100.1	53.2

* Cleared cases may include offences reported prior to 2000.

** Include motor cycle and snow vehicle and all attempts.

† Statistics do not include Criminal Code 'Fail to Remain' offences.

Criminal Code Offences Reported and Cleared*- Area Field Command

TPS 2000 Statistical Report

		First Degree Murder	Second Degree Murder	Manslaughter	Attempted Murder	Sexual Assault	Other Assault	Robbery	Break and Enter	Theft of Motor Vehicle**	Theft Over \$5,000	Theft Under \$5,000	Fraud	Offensive Weapons Offences	Other Criminal Code	Total Criminal Code Non-Traffic	Criminal Code Traffic†	Total Criminal Code
21 Division	Reported	3	0	0	5	53	698	65	333	299	46	772	149	82	1,874	4,379	167	4,546
	Cleared	2	0	0	4	44	628	36	96	54	10	139	90	77	1,386	2,566	167	2,733
	% Cleared	66.7	0.0	0.0	80.0	83.0	90.0	55.4	28.8	18.1	21.7	18.0	60.4	93.9	74.0	58.6	100.0	60.1
22 Division	Reported	2	0	0	2	49	711	142	635	813	105	2,542	292	105	2,747	8,145	233	8,378
	Cleared	1	0	0	2	32	545	46	77	74	8	445	179	103	1,858	3,370	232	3,602
	% Cleared	50.0	0.0	0.0	100.0	65.3	76.7	32.4	12.1	9.1	7.6	17.5	61.3	98.1	67.6	41.4	99.6	43.0
23 Division	Reported	6	1	0	15	142	1,747	261	733	1,469	165	3,282	616	236	3,381	12,054	284	12,338
	Cleared	1	2	0	6	112	1,329	80	64	137	28	785	513	223	1,990	5,270	288	5,558
	% Cleared	16.7	200.0	0.0	40.0	78.9	76.1	30.7	8.7	9.3	17.0	23.9	83.3	94.5	58.9	43.7	101.4	45.0
31 Division	Reported	3	2	0	22	153	2,221	451	1,141	1,503	111	2,811	545	505	3,910	13,378	264	13,642
	Cleared	1	2	0	17	116	1,755	200	179	157	8	439	352	488	2,438	6,152	263	6,415
	% Cleared	33.3	100.0	0.0	77.3	75.8	79.0	44.3	15.7	10.4	7.2	15.6	64.6	96.6	62.4	46.0	99.6	47.0
32 Division	Reported	2	1	0	9	111	1,370	252	1,097	1,100	167	3,753	679	235	4,029	12,805	212	13,017
	Cleared	2	1	0	3	83	1,041	98	171	121	25	763	591	223	2,613	5,735	211	5,946
	% Cleared	100.0	100.0	0.0	33.3	74.8	76.0	38.9	15.6	11.0	15.0	20.3	87.0	94.9	64.9	44.8	99.5	45.7

* Cleared cases may include offences reported prior to 2000.

** Include motor cycle and snow vehicle and all attempts.

† Statistics do not include Criminal Code 'Fail to Remain' offences.

Continued on next page

Criminal Code Offences Reported and Cleared*- Area Field Command(Cont'd)

TPS 2000 Statistical Report

	First Degree Murder	Second Degree Murder	Manslaughter	Attempted Murder	Sexual Assault	Other Assault	Robbery	Break and Enter	Theft of Motor Vehicle**	Theft Over \$5,000	Theft Under \$5,000	Fraud	Offensive Weapons Offences	Other Criminal Code	Total Criminal Code Non-Traffic	Criminal Code Traffic†	Total Criminal Code	
33 Division	Reported	2	0	0	2	81	1,050	204	837	646	120	2,432	293	151	2,422	8,240	136	8,376
	Cleared	2	0	0	2	65	882	69	95	85	21	817	212	143	1,569	3,962	136	4,098
	%Cleared	100.0	0.0	0.0	100.0	80.2	84.0	33.8	11.4	13.2	17.5	33.6	72.4	94.7	64.8	48.1	100.0	48.9
41 Division	Reported	3	0	1	10	255	2,936	530	1,539	1,642	133	4,092	652	300	6,000	18,093	569	18,662
	Cleared	0	0	1	6	159	2,271	200	229	203	29	1,075	492	281	4,191	9,137	567	9,704
	% Cleared	0.0	0.0	100.0	60.0	62.4	77.4	37.7	14.9	12.4	21.8	26.3	75.5	93.7	69.9	50.5	99.6	52.0
42 Division	Reported	2	0	0	21	276	3,078	628	2,164	1,965	142	4,232	493	552	5,565	19,118	341	19,459
	Cleared	1	0	0	11	220	2,655	151	287	449	76	3,264	317	525	4,594	12,550	337	12,887
	% Cleared	50.0	0.0	0.0	52.4	79.7	86.3	24.0	13.3	22.8	53.5	77.1	64.3	95.1	82.6	65.6	98.8	66.2
54 Division	Reported	1	0	0	1	130	1,381	175	748	472	43	1,556	156	178	2,483	7,324	168	7,492
	Cleared	0	0	0	1	88	1,090	66	97	64	8	244	118	174	1,555	3,505	167	3,672
	% Cleared	0.0	0.0	0.0	100.0	67.7	78.9	37.7	13.0	13.6	18.6	15.7	75.6	97.8	62.6	47.9	99.4	49.0
Area Field Command	Reported	24	4	1	87	1,250	15,192	2,708	9,227	9,909	1,032	25,472	3,875	2,344	32,411	103,536	2,374	105,910
	Cleared	10	5	1	52	919	12,196	946	1,295	1,344	213	7,971	2,864	2,237	22,194	52,247	2,368	54,615
	% Cleared	41.7	125.0	100.0	59.8	73.5	80.3	34.9	14.0	13.6	20.6	31.3	73.9	95.4	68.5	50.5	99.7	51.6

* Cleared cases may include offences reported prior to 2000.

** Include motor cycle and snow vehicle and all attempts.

† Statistics do not include Criminal Code 'Fail to Remain' offences.

Traffic and Other Offences - by Division

TPS 2000 Statistical Report

	Criminal Code Traffic						Other Offences							
	Dangerous Driving	Drive While Impaired	Refuse Breath/Blood/Screen	Over 80 mg	Drive while Disqualified	Total➔	Drug*	Other Federal Statutes	Liquor Licence Act - Drunk	Liquor Licence Act - Other	Other Provincial Statutes	Municipal By-Laws➡	Total†	Highway Traffic Act☞
11 Division	22	62	17	71	9	181	399	97	298	344	603	1,313	3,054	13,573
12 Division	40	70	11	71	14	206	753	73	87	90	466	455	1,924	11,531
13 Division	26	62	9	57	4	158	550	45	58	107	301	716	1,777	13,147
14 Division	43	158	38	153	12	404	1,897	86	850	1,738	1,808	2,270	8,649	20,511
51 Division	21	46	12	53	5	137	1,831	62	643	657	1,219	416	4,828	4,931
52 Division	42	51	11	72	2	178	1,708	112	410	982	1,891	2,837	7,940	12,726
53 Division	11	52	12	52	3	130	147	10	92	78	238	578	1,143	15,964
55 Division	30	84	16	96	8	234	457	29	243	422	595	637	2,383	12,829
Central Field Command	235	585	126	625	57	1,628	7,742	514	2,681	4,418	7,121	9,222	31,698	105,212
21 Division	13	57	17	71	9	167	170	13	95	141	156	90	665	10,951
22 Division	20	84	24	96	9	233	142	27	68	96	284	182	799	16,120
23 Division	32	112	23	96	21	284	221	33	152	173	506	486	1,571	22,916
31 Division	38	100	23	91	12	264	504	57	88	209	784	477	2,119	20,726
32 Division	35	74	24	71	8	212	305	17	105	136	774	1,976	3,313	16,208
33 Division	21	48	8	56	3	136	183	11	21	66	260	869	1,410	16,786
41 Division	61	200	55	241	12	569	428	45	159	376	838	708	2,554	23,393
42 Division	77	110	26	110	18	341	627	22	111	312	694	375	2,141	24,143
54 Division	22	53	18	72	3	168	236	16	69	118	394	264	1,097	13,202
Area Field Command	319	838	218	904	95	2,374	2,816	241	868	1,627	4,690	5,427	15,669	164,445
Toronto	554	1,423	344	1,529	152	4,002	10,558	755	3,549	6,045	11,811	14,649	47,367	269,657

* Includes Food & Drug Act and Narcotic Control Act.

† Excluding Highway Traffic Act.

➔ Excluding Criminal Code 'Fail to Remain' offences.

☞ Reflects the total Highway Traffic Act charges issued by divisional personnel.

The Total of the H.T.A. charges issued by divisional, traffic and other personnel was 321,561.

➡ Reflects the total Bylaw charges issued by divisional personnel. The total of the Bylaw charges issued by all units was 16,154

Criminal Code Offences - Persons Charged

TPS 2000 Statistical Report

		First Degree Murder	Second Degree Murder	Manslaughter	Attempted Murder	Sexual Assault	Other Assault	Robbery	Break and Enter	Theft of Motor Vehicle	Theft Over \$5,000	Theft Under \$5,000	Fraud	Offensive Weapons Offences	Other Criminal Code	Total Criminal Code Non-Traffic	Total Criminal Code Traffic	Total Criminal Code
Young Offenders	Male	2	0	0	5	158	1,269	498	337	231	8	968	91	310	2,159	6,036	6	6,042
	Female	0	0	0	0	6	499	43	36	22	2	656	34	27	570	1,895	1	1,896
	Total	2	0	0	5	164	1,768	541	373	253	10	1,624	125	337	2,729	7,931	7	7,938
Adults	Male	15	10	2	70	728	9,797	615	869	378	110	3,812	1,090	754	11,477	29,727	1,830	31,557
	Female	2	3	0	2	10	2,069	68	63	36	44	1,885	636	71	3,222	8,111	170	8,281
	Total	17	13	2	72	738	11,866	683	932	414	154	5,697	1,726	825	14,699	37,838	2,000	39,838
Toronto		19	13	2	77	902	13,634	1,224	1,305	667	164	7,321	1,851	1,162	17,428	45,769	2,007	47,776

Criminal Code Traffic							Other Offences			
Fail to Remain	Dangerous Driving	Drive While Impaired	Refuse Breath/Blood/Screen	Over 80 mg	Drive while Disqualified	Total	Drug*	Other Federal Statutes	Other Provincial Statutes	Total**

Young Offenders	Male	0	4	0	0	2	0	6	482	9	95	586
	Female	0	0	1	0	0	0	1	68	2	106	176
	Total	0	4	1	0	2	0	7	550	11	201	762

Adults	Male	84	136	1,068	111	375	56	1,830	3,135	610	1,994	5,739
	Female	9	13	96	7	43	2	170	435	115	1,538	2,088
	Total	93	149	1,164	118	418	58	2,000	3,570	725	3,532	7,827

Toronto	93	153	1,165	118	420	58	2,007	4,120	736	3,733	8,589
---------	----	-----	-------	-----	-----	----	-------	-------	-----	-------	-------

* Includes Food & Drug Act and Narcotic Control Act.

** Excluding Highway Traffic Act, Municipal Bylaws and Liquor Licence Acts.

Persons charged by unit⊗

TPS 2000 Statistical Report

Unit	Homicide	Attempted Murder	Sexual Assault	Other Assault	Robbery	Break and Enter	Motor Vehicle Theft*	Theft (All other)	Fraud	Offensive Weapons Offences	Other Criminal Code	Criminal Code Traffic	Drug	Other Offences**	Total charged
D11	1	0	30	546	38	39	19	173	53	41	856	86	233	403	2,518
D12	1	2	48	862	45	72	28	307	85	74	1,046	81	276	272	3,199
D13	0	3	44	589	49	63	33	82	33	58	658	60	216	266	2,154
D14	3	7	76	1,252	90	137	47	586	154	102	1,933	195	725	502	5,809
D21	1	3	17	380	18	54	12	59	20	14	625	84	30	93	1,410
D22	0	2	19	336	25	41	24	341	49	26	465	83	73	135	1,619
D23	2	4	51	763	84	29	32	547	97	60	753	128	56	207	2,813
D31	1	11	78	1,051	121	94	62	275	89	96	1,032	114	153	268	3,445
D32	1	0	50	707	42	88	37	642	152	54	708	82	68	202	2,833
D33	0	1	42	555	43	67	28	473	65	54	506	37	90	128	2,089
D41	1	5	70	1,385	103	106	101	773	111	71	1,333	210	69	290	4,628
D42	0	10	95	1,539	124	115	86	457	85	122	1,379	144	231	261	4,648
D51	4	8	52	726	90	76	45	199	35	90	1,572	32	468	362	3,759
D52	5	8	82	982	100	94	15	1,600	220	96	1,738	68	535	346	5,889
D53	0	2	17	337	51	51	14	255	58	46	429	69	401	135	1,865
D54	0	1	36	607	40	58	20	134	25	44	661	80	54	196	1,956
D55	2	5	60	929	81	98	35	535	99	52	985	85	133	250	3,349
SQUADS→	12	1	26	8	60	1	0	12	404	3	63	2	5	3	600
INT	0	1	1	16	5	5	2	5	2	22	41	3	13	2	118
SIS	0	0	3	4	1	2	8	8	2	11	243	2	13	45	342
TSV	0	0	0	17	3	0	6	6	10	3	129	349	3	27	553
OTHER	0	3	5	43	11	15	13	16	3	23	273	13	275	76	769
Toronto	34	77	902	13,634	1,224	1,305	667	7,485	1,851	1,162	17,428	2,007	4,120	4,469	56,365

* Includes attempt thefts

** Includes federal statutes other than drug acts, and other provincial statutes. Excludes Municipal Bylaws and Liquor Control Acts.

⊗ Unit of the arresting officer

→ Homicide, Fraud, Hold-up and Sexual Assault squads

INT - Intelligent Services, SIS - Special Investigative Services, TSV - Traffic Services

Acknowledgement

Managing Editor

Staff Inspector Bruce Smollet
Corporate Communications

Editor

Sgt. Martin Hunt
Corporate Communications

Expeditor

Sgt. Nigel Fontaine
Corporate Communications

Internet Edition

John Angus
Corporate Communications

Crime Information Co-ordinator

Maureen Connolly, Crime Information Unit

Statistical Facilitation/Validation/Layout/Design

Karottu George, Analyst, Crime Information Unit

A special thanks to all contributors, especially Information Technology Services, for their continuing support.

Reproduction in whole or in part is permitted subject to the requirement that it is not for monetary gain; reproduced material remains in context; and the source is acknowledged on all copies as follows: **Toronto Police Service 2000 Statistical Report**, along with date and page references.

Visit our Website at: www.TorontoPolice.on.ca

You may reach us by E-mail at:

CorporateCommunications@TorontoPolice.on.ca