

## INTRODUCTION

The Toronto Police Service publishes crime statistics based upon the number of reported offences whereas Statistics Canada publishes crime statistics based on reported incidents of crime. In offence based statistics, all offences involved in an incident are included, whereas in the incident based statistics, more than one offence may be included in one incident but only the most serious crime is included in the crime statistics. So care should be taken when comparing statistics published by both agencies.

### Types of Offences

**Violent offences** are crimes involving the application or threat of application of force to a person. These include homicide, homicide related offence, abduction, sexual assault, sexual offence, non-sexual assault and robbery.

**Property offences** involve unlawful acts with respect to property but do not involve the use or threat of violence against an individual. These may include theft, possession of stolen property, break and enter and fraud.

**Other Criminal Code** offences include the remaining non-traffic *Criminal Code* offences that are classified as neither violent nor property offences. Examples are prostitution, gaming and betting, mischief, offences against public order, bail violations.

**C. D. S. A. offences** involve offences under the federal Controlled Drugs and Substances

Act. These offences comprise of possession, trafficking, importation or cultivation of various illicit, controlled and restricted drugs.

**Other federal statute** offences include violations under all other federal statutes. They may include Bankruptcy Act, Customs Act, Excise Act, Immigration Act.

**Provincial Statute** offences include all violations under provincial statutes excepting traffic related statutes. Examples are Coroner's Act, Environmental Protection Act, Mental Hospital Act and Liquor Licence Act. The majority of these offences come under Liquor Licence Act.

### General Information

Due to system change, 'Fail to remain...' violations, which form a major portion of Criminal Code traffic offences, are not available for publishing. As a result, care should be taken when comparing the total Criminal Code offences across years. It is recommended that Criminal Code offences excluding Criminal Code traffic offences may be taken for analyzing crime trends.

Offences published in a particular year include offences reported to or become known to police during the year. However, offences occurred in the past can be reported in a future year. A typical example is the sexual assault category. Similarly, concluded offences include those committed during previous years.

## OVERVIEW

- Reported **Criminal Code Offences** *excluding traffic offences* decreased 0.5% in 2002 over the previous year.
- **Violent crime** decreased 4.8% in 2002 from 2001.
- **Property crime** increased 1.2% over the same period.
- **Other criminal Code Offences** came down by 0.5% in 2002 from 2001.
- There were 60 homicides in 2002, the same number as in 2001. There were two (2) young offenders charged with homicide in 2002 compared to 54 adults charged.
- There were 2,226 sexual assaults in 2002 compared to 2,212 in 2000. About 48% of these offences were committed against persons up to and including 17 years of age. There were 130 young offenders charged for the crime in 2002 compared to 113 in 2001.
- Total non-sexual assaults decreased by 4.9% in 2002 over 2001. Minor assaults which is about 77.0% of the crime decreased 5.0% while major assaults in the category came down 4.2%. There were 1587 young offenders charged for the crime in 2002 compared to 1711 in 2001.
- Total robbery decreased 6.5%; robbery to banks and financial institutions decreased in 2002 by 10.3% while purse snatching increased substantially by 33.6%.
- Break and enters to houses increased 5.8%; entries to apartments dropped 11.2%.
- There were 11,558 motor vehicles reported stolen in 2002, representing a drop of 5.5% from 2001. Out of 600 persons charged for stealing motor vehicles, 243(40.5%) were young offenders.
- On the Toronto roads: There were 91 fatal collisions, up 75% over the past year; and resulting in 97 fatalities. There were 16,839 injury collisions and 24,636 people were injured. The total number of reportable motor vehicle collisions stood at 71,760 in 2002 compared to 64,113 in 2001, an increase of 11.9%.
- There were 704 complaints lodged against police officers in 2002, compared to 742 in 2001.
- Number of vehicles stopped by R.I.D.E. (Reduced Impaired Driving Everywhere) increased in 2002 by 10.6% to 170,891.
- Total calls for service through Communications Centre increased 2.7% while the total dispatched calls for service increased 1.9% in 2002 over 2001. The Service reaches out to wider sections of the community by providing service in languages other than English through the AT&T Language Line Service. In 2002 there were 3081 calls for service received in 50 languages other than English.

## *Table of Contents*

Introduction	i - ii
Uniform Strength, Expenditures & Distribution	1
Budget Information	1
Police Personnel by Rank and Classification	2
Police Personnel by Division and Field Command	3
Fleet Information	4
Calls for Service, AT&T Language Line Service	5
Public Complaints	6-7
Community policing & Miscellaneous Information	8-9
General Data by Division and Field Command	10
Traffic Collisions	11-12
<b><u>General Crime Information</u></b>	
Criminal Code Offences - Highlights	13-15
Criminal Code Offences by Category	16-17
Selected Offences Against Victims by Age and Sex	18
Persons Charged by Age and Sex	19-20
Violent Crime Statistics	21
Selected Offences Against Police Officers	22
Total Incidents Reported to Statistics Canada	22
<b><u>Criminal Code Offences Reported and Cleared</u></b>	
Field Command and Toronto Totals	23
By Division and Field Command	24-27
<b><u>Traffic and Other Offences</u></b>	28
<b><u>Persons Charged</u></b>	
Criminal Code Offences	29
Traffic and Other Offences	30
By Unit of Officer	31

# Uniform Strength and Expenditures

	1998	1999	2000	2001	2002
Population Served	2,512,079	2,538,191	2,565,555	2,594,205	2,618,605
Uniform Strength	4,904	5,111	5,149	5,028	5,119
Uniform Strength /Population	1/512	1/497	1/498	1/516	1/512
Actual Expenditures(Gross \$)	526,106,800	554,227,500	579,729,813	603,387,884	635,530,908+
Per Capita Cost*	209.43	218.36	225.97	232.59	242.70+

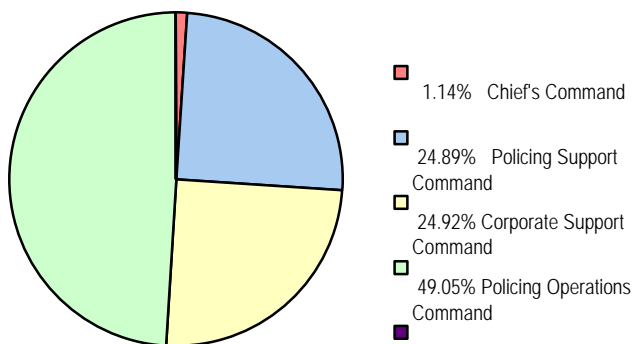
+ Estimate (based on projected expenditures).

## Gross Operating Budget

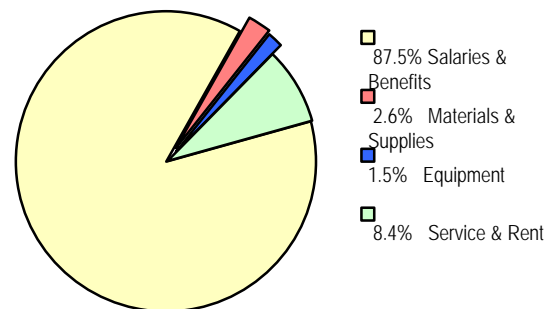
Year	Budget (\$)*	Change from Previous Year (\$)	% Change from Previous Year
1998	522,145,800	15,200	0.003
1999	537,911,400	15,765,600	3.02
2000	577,893,300	39,981,900	7.43
2001	600,934,100	23,040,800	3.99
2002	634,336,300	33,402,200	5.56

## Gross Operating Budget

### By Appropriation



### By Feature



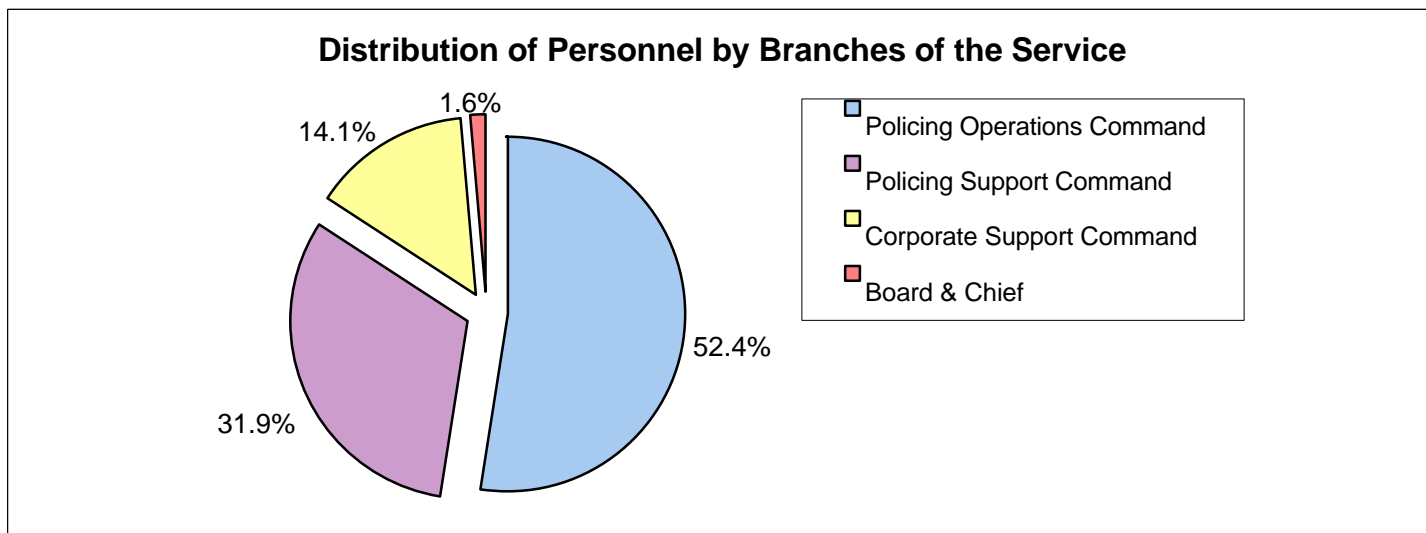
	1998	1999	2000	2001	2002
Chief	1	1	1	1	1
Deputy Chief	6	5	4	2	2
Staff Superintendent	0	0	0	6	6
Superintendent	18	21	21	23	22
Staff Inspector	33	29	26	23	24
Inspector	24	29	34	38	35
Staff Sergeant/Detective Sergeant	227	222	238	259	257
Sergeant/Detective	848	856	886	900	922
Police Constable	3,747	3,948	3,939	3,776	3,850
<b>Total Uniform Strength</b>	<b>4,904</b>	<b>5,111</b>	<b>5,149</b>	<b>5,028</b>	<b>5,119</b>
Chief Administrative Officer- Policing	1	0	1	1	1
Director	4	4	4	4	4
Parking Enforcement Officer	270	290	310	290	348
Court Officer	280	274	279	274	297
Document Server	12	16	16	14	15
Communications Operator	230	220	218	219	224
Cadets-in-Training	131	72	223	236	215
Custodial Officer	6	5	5	5	4
Other Civilians	1,228	1,241	1,219	1,219	1,194
<b>Total Civilian Strength</b>	<b>2,162</b>	<b>2,122</b>	<b>2,275</b>	<b>2,262</b>	<b>2,302</b>
<b>Grand Total</b>	<b>7,066</b>	<b>7,233</b>	<b>7,424</b>	<b>7,290</b>	<b>7,421</b>

Auxiliary personnel**	271	496	302	535	628
Temporary Employee	51	74	92	115	177
School Crossing Guard <sup>☞</sup>	704	711	697	695	714
Part-time Court Officer	179	154	164	169	170
Part-time Employee - other	40	56	57	105	120

\* As of December 31, 2002

\*\* Includes other volunteers

<sup>☞</sup> Includes spares



**Personnel by Division And Field Command (Actual) \*\***

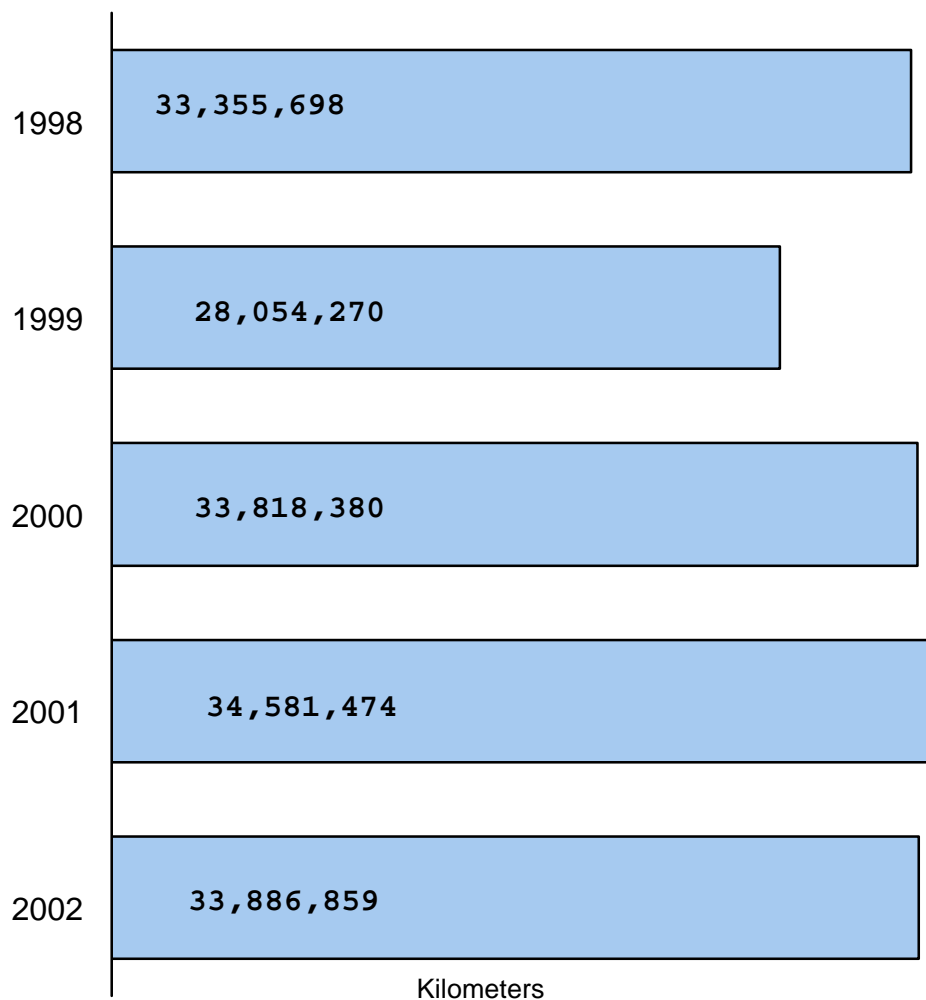
	Superintendent and Above	Staff Inspector	Inspector	Staff/Detective Sergeant	Sergeant/Detective	Police Constable	Uniform Strength	Civilian Strength	Total Strength	School Crossing Guard
CENTRAL FIELD COMMAND HQ	1	0	0	3	2	4	10	6	16	0
11 Division	0	1	0	7	31	120	159	10	169	33
12 Division	1	0	1	7	32	141	182	12	194	53
13 Division	0	1	0	8	31	140	180	10	190	51
14 Division	1	0	2	9	50	247	309	19	328	50
51 Division	1	0	1	6	33	142	183	11	194	27
52 Division	1	0	2	10	51	284	348	24	372	16
53 Division	0	1	0	7	31	99	138	10	148	46
54 Division	0	1	0	8	31	138	178	12	190	42
55 Division	1	0	1	7	38	177	224	20	244	61
<b>Central Field Command*</b>	<b>6</b>	<b>4</b>	<b>7</b>	<b>72</b>	<b>330</b>	<b>1,492</b>	<b>1,911</b>	<b>134</b>	<b>2,045</b>	<b>379</b>
AREA FIELD COMMAND HQ	2	0	0	2	1	2	7	10	17	0
22 Division	1	0	1	8	32	169	211	11	222	57
23 Division	1	0	1	7	32	162	203	10	213	49
31 Division	1	0	1	7	33	241	283	12	295	37
32 Division	1	0	2	7	33	202	245	11	256	50
33 Division	0	1	0	7	32	137	177	11	188	41
41 Division	0	0	2	8	43	258	311	15	326	46
42 Division	1	0	1	8	38	260	308	18	326	55
<b>Area Field Command*</b>	<b>7</b>	<b>1</b>	<b>8</b>	<b>54</b>	<b>244</b>	<b>1431</b>	<b>1745</b>	<b>98</b>	<b>1843</b>	<b>335</b>
<b>Grand Total</b>	<b>13</b>	<b>5</b>	<b>15</b>	<b>126</b>	<b>574</b>	<b>2,923</b>	<b>3,656</b>	<b>232</b>	<b>3,888</b>	<b>714</b>

\* Includes those assigned to Field Command Headquarters.

\*\* Does not include temporary and part-time Civilian members.

	<b>1998</b>	<b>1999</b>	<b>2000</b>	<b>2001</b>	<b>2002</b>
Cars	1,161	1,191	1,193	1,228	1,231
Motorcycles	129	130	133	138	137
Other	143	139	149	145	141
<b>Total Vehicles</b>	<b>1,433</b>	<b>1,460</b>	<b>1,475</b>	<b>1,511</b>	<b>1,509</b>
Boats	18	19	19	19	19
Horses	25	23	25	25	26

**Total Kilometers driven by Police Vehicles**



# Classification of Incoming Calls

TPS 2002 Statistical Report

Year	Calls Received at Communications Centre			Dispatched Calls	Other Calls**
	Emergency*	Non-Emergency +	Total		
1998	852,116	889,838	1,741,954	841,894	900,060
1999	900,717	876,407	1,777,124	801,746	975,378
2000	973,249	849,191	1,822,440	837,219	985,221
2001	983,343	886,119	1,869,462	864,095	1,005,367
2002	1,036,355	883,843	1,920,198	880,271	1,039,927

\* 9-1-1 Emergency Calls

+ Incl. Non-emergency calls, Alarms, Parking Complaints, TTC, RIDE program, and other calls which include Administration, Internal etc.

\*\* Advised, transferred, or no action taken.

## AT&T Language Line Service (Calls made in languages other than English)

### Number of Calls and top 10 ranks in 1997-2001\*

Language	1998	1999	2000	2001	2002
Chinese	857(1)	877(1)	874(1)	854(1)	1,076(1)
Spanish	254(2)	236(3)	251(2)	353(2)	441(2)
Vietnamese	203(3)	145(4)	162(3)	244(3)	197(3)
Italian	171(4)	274(2)	145(5)	128(6)	190(4)
Tamil	102(8)	107(8)	141(6)	167(4)	138(5)
French	112(7)	114(6)	120(9)	102(8)	132(6)
Portuguese	140(5)	126(5)	151(4)	146(5)	129(7)
Korean	99 (9)	110(7)	121(8)	128(6)	128(8)
Russian	78	103(9)	122(7)	94(9)	117(9)
Polish	124(6)	102(10)	86(10)	106(7)	84(10)
Punjabi	98(10)	90	73	57	64
Farsi	66	63	32	44	47
Greek	35	37	24	21	37
Hungarian	j	58	40	59(10)	50
Arabic	29	42	13	34	13
Somali	25	21	27	13	17
Japanese	22	12	40	20	7
Hindi	18	18	31	15	22
Urdu	17	9	12	13	19
German	15	12	2	0	10
Croatian	8	6	9	1	8
Turkish	10	9	8	18	37
<b>Total**</b>	<b>2,626</b>	<b>2,664</b>	<b>2,578</b>	<b>2,712</b>	<b>3,081</b>

\* Top Ten ranking shown in bracket

\*\* Including other non-English languages

*In the year 2002, 3,081 calls were made in 50 languages other than English.*



## Public Complaints\*\*

TPS 2002 Statistical Report

Complaints Received	1993	1994	1995	1996	1997
Physical Assault	367	284	299	219	169
Police Procedure	413	405	397	132	72
Misuse of Authority	173	196	185	399	342
Verbal Abuse	263	182	201	160	105
<b>Total Complaints Received</b>	<b>1,216</b>	<b>1,067</b>	<b>1,082</b>	<b>910</b>	<b>720*</b>
<b>Percentage change</b>	<b>-4.1</b>	<b>-12.3</b>	<b>+1.4</b>	<b>-15.9</b>	<b>-20.9</b>

\* Includes 32 complaints which are not included in the four (4) general classifications in the table above. These complaints were received after proclamation of amendments to the Police Services Act on November 27, 1997. Eleven (11) of these complaints were classified as serious conduct, twenty (20) as less serious conduct and one (1) as a complaint about service.

### Dispositions:

#### Chief's Decision

No Action Warranted	387	512	308	322	245
Criminal Charges	10	6	3	0	0
Referred to Police Complaint Board	2	4	0	0	0
Disciplinary Charge	14	3	0	7	9
Counsel or Caution	6	2	6	10	1
Frivolous, Vexatious or Bad Faith	102	140	112	127	162

#### Complaints Bureau Dispositions

Informally Resolved	37	26	12	2	3
Withdrawn	475	407	445	364	276
Change to Inquiry	24	51	81	184	219
Six Month Limitation	43	64	57	70	31
Third Party	11	7	13	5	8
Not Within Jurisdiction of the Act/Bureau	13	12	15	33	11

<b>Total Dispositions</b>	<b>1,124</b>	<b>1,234</b>	<b>1,052</b>	<b>1,124</b>	<b>965</b>
---------------------------	--------------	--------------	--------------	--------------	------------

\*\* On November 27, 1997, Bill 105 (RSO) "*A Act to review the Partnership between the province, municipalities and the police and to enhance community safety*" was proclaimed by the Legislative Assembly. The amendments in Bill 105 revised the Police Services Act and in particular created a new system to deal with the internal discipline and public complaints.

Continued on next page

# Public Complaints\*

TPS 2002 Statistical Report

<b>Complaints Received</b>	<b>1998</b>	<b>1999</b>	<b>2000</b>	<b>2001</b>	<b>2002</b>
Conduct - Less Serious	438	408	479	405	517.5
Conduct - Serious	158	205	252	140	167.0
Policy	12	9	12	1	4.5
Services	11	7	34	12	15.0
<b>Total Complaints Received</b>	<b>619</b>	<b>629</b>	<b>819*</b>	<b>742**</b>	<b>704.0</b>

\* Includes 35 complaints with no specific allegation, and 7 other complaints

\*\* Includes 184 complaints which did not meet criteria

<b>Dispositions</b>	<b>1998</b>	<b>1999</b>	<b>2000</b>	<b>2001</b>	<b>2002</b>
Frivolous	71	27	56	125	117.5
Informal Resolution	96	82	146	134	106.0
Made in Bad Faith	14	13	18	20	24.5
Misconduct Identified/Hearing	2	2	1	1	0
No Further Action/Final Report	141	175	180	171	144.0
Non Jurisdictional/Other	10	10	39*	18	16.0
Not Directly Affected	19	27	29	16	19.5
Over Six Months	44	39	32	47	24.0
Unit Commander's Attention/Personnel Documentation	4	5	14	16	10.5
Vexatious	9	0	2	0	4.0
Withdrawn	117	132	183	194	130.0
<b>Total Dispositions</b>	<b>527</b>	<b>512</b>	<b>700</b>	<b>742</b>	<b>596.0**</b>

\*Includes multiple jurisdiction(more than one police service), Non-jurisdictional complaints(subject officer retired or resigned) and complaints not signed by complainants.

\*\*Total does not include outstanding complaints.

<b>Category of Allegations*</b>	<b>2000</b>	<b>2001</b>	<b>2002</b>
Discreditable Conduct	731	670	501
Insubordination	9	7	7
Neglect of duty	294	252	195
Deceit	15	14	11
Breach of Confidence	1	8	7
Corrupt practice	10	18	26
Unlawful or Unnecessary exercise of authority	299	324	287
Damage to clothing or equipment	1	0	0
Consuming drug or alcohol in a manner prejudicial to duty	3	0	0
<b>Total Allegations</b>	<b>1363**</b>	<b>1293</b>	<b>1034</b>

\*Categorization is different from previous years; refer to 1999 Report for previous years' figures

\*\*Total incorporates complaints where there are multiple allegations.

## Community Based and Miscellaneous Policing Statistics

**1998      1999      2000      2001      2002**

### Community Information / Crime Prevention - Community Relations

Communities involved in Neighbourhood Watch	962	742	772	758	772
Homes involved in Neighbourhood Watch	358,416	392,528	408,406	399,067	408,406
Crime Prevention Presentations	1,904	1,916	1,880	1,702	1,437 ➡
Community Relations Presentations	2,873	4,898	4,369	2,383	2,096 ➡
Substance Abuse/Safety Presentations	1,254	1,106	1,115	1,113	1,371 ➡

### Intelligence Services

Hate/Bias Crime Occurrences	228	292	204	338	219
-----------------------------	-----	-----	-----	-----	-----

### R.I.D.E. (Reduce Impaired Driving Everywhere) Year Round Statistics - Traffic Services

Vehicles Stopped	98,426	116,517	115,112	154,536	170,891
Charges Laid	79	144	198	257	244

### Alarms Program - Communications Support

Valid Alarms	1,225	1,084	885	1,000	1,059
False Alarms	27,327	27,911	27,704	26,883	29,042

### Victim Services

Total Incidents	4,967	5,553	7,175	5,958	7,523
Telephone Assisted	4,615	5,175	6,846	5,674	7,205
On Scene	352	378	638	284	318
Domestic Related	2,461	3,440	4,807	3,932	4,779

### Other Programs - Industrial Liaison

Labour disputes attended	25	35	37	53	36
Potential dispute contacts	46	29	10	20	16

### Volunteer Resources

Hours Volunteered	39,282	43,893	48,236	51,255	45,000
-------------------	--------	--------	--------	--------	--------

### Crime Stoppers \*

Arrests	251	388	323	273	191
Charges Laid	642	1,230	694	889	530

\* Toronto statistics only

➡ See next page

**Community Relations/Community Liaison/Miscellaneous**

Type of Presentation	Number of Presentations	Persons Attending
Speaking engagements - Letter	175	6,577
School Lectures	127	5,157
Lectures to Reliefs/Platoons	230	4,506
Speaking Engagements - Other	239	11,085
Community Meeting Attended	1,188	14,241
Station Tours	137	1,489
<b>Sub-Total</b>	<b>2,096</b>	<b>43,055</b>
Media Relations	100	11.9 Million (Estimated audience)
Community Outreach	127	1,650,450
External Presentation	154	1,487
Internal Presentation/Lectures	15	129
External Meeting/Lectures	309	496
Internal Meeting	160	257
Divisional Assistance/Support Lectures	102	127
Conference/Seminars	32	1,876
Other Duties	692	797
<b>Grand Total</b>	<b>1,691</b>	<b>13,555,619</b>

Substance Abuse/Safety Presentations	Count
Streetproofing	229
Alcohol and Drugs	78
Law	103
Sexual Abuse	48
Abuse of elderly	90
Family violence	823
<b>Total</b>	<b>1,371</b>

**Crime Prevention**

Type of Presentation	Number of Presentations	Persons Attending
Neighbourhood Watch	124	4,153
Home security/High-rise security	256	7,934
Office security	131	2,038
Personal safety	347	11,429
Senior citizen safety	152	5,707
Victims of crime	150	567
Other	277	22,584
<b>Total</b>	<b>1,437</b>	<b>54,412</b>

Communities involved in Neighbourhood Watch	772
Homes involved in Neighbourhood Watch	408,406
Block Parents screened	201
Banks and Business premises visited	3,231
Serious break and enter call-backs	1,381
Crime prevention pamphlets distributed	173,490
Community Safety Audit Conducted	163
Crime prevention through environmental design(CPTED Audits) conducted	362

## General Data by Division and Field Command

	Estimated Population	Area (sqkm)	Estimated Gross Expenditures(\$)	Dispatched calls	Motor Vehicles		Bicycles Stolen	Value of Property (\$)*
					Stolen	Recovered		
11 Division	103,031	15.9	12,226,987	28,144	337	241	215	3,395,144
12 Division	96,358	18.5	13,466,305	34,913	400	277	94	3,545,646
13 Division	144,689	19.2	13,426,327	35,052	419	305	118	9,024,739
14 Division	153,829	15.7	24,731,841	54,656	636	446	479	15,929,551
51 Division	67,835	11.4	15,016,892	35,154	328	259	192	4,627,785
52 Division	76,684	12.4	27,502,023	55,970	485	391	644	38,986,139
53 Division	143,173	26.0	11,158,244	26,164	456	295	159	15,691,365
54 Division	136,838	20.4	12,792,326	34,215	414	325	185	5,297,447
55 Division	121,390	17.0	16,563,487	36,505	489	410	361	4,250,051
<b>Central Command</b>	<b>1,043,827</b>	<b>156.5</b>	<b>146,884,432</b>	<b>340,773</b>	<b>3,964</b>	<b>2,949</b>	<b>2,447</b>	<b>100,747,867</b>
22 Division	196,200	66.9	15,551,396	43,085	1,025	798	328	11,672,055
23 Division	164,651	56.6	14,620,585	36,674	1,139	814	166	14,180,434
31 Division	199,936	47.7	18,901,978	51,539	1,159	760	131	11,856,803
32 Division	206,215	62.6	17,465,023	45,136	1,057	692	173	12,866,059
33 Division	194,175	53.0	12,780,455	34,064	500	386	94	12,183,905
41 Division	236,979	60.1	21,873,775	58,106	1,233	899	220	11,955,111
42 Division	376,622	127.2	22,274,196	61,079	1,481	1,146	323	13,280,923
<b>Area Command</b>	<b>1,574,778</b>	<b>474.1</b>	<b>123,467,408</b>	<b>329,683</b>	<b>7,594</b>	<b>5,495</b>	<b>1,435</b>	<b>87,995,290</b>
<b>Toronto</b>	<b>2,618,605</b>	<b>630.6</b>	<b>270,361,840†</b>	<b>880,271††</b>	<b>11,558</b>	<b>8,445◆</b>	<b>3,882</b>	<b>188,743,157</b>

\* Does not include the value of motor vehicles and bicycles, but includes frauds.

†† Includes 102,556 CARU calls, 92,972 Tag Agency Dispatched Events, and 14,287 other front line calls.

† Includes Division totals only.

The grand total of the estimated gross expenditure of the Service was \$635,530,908.

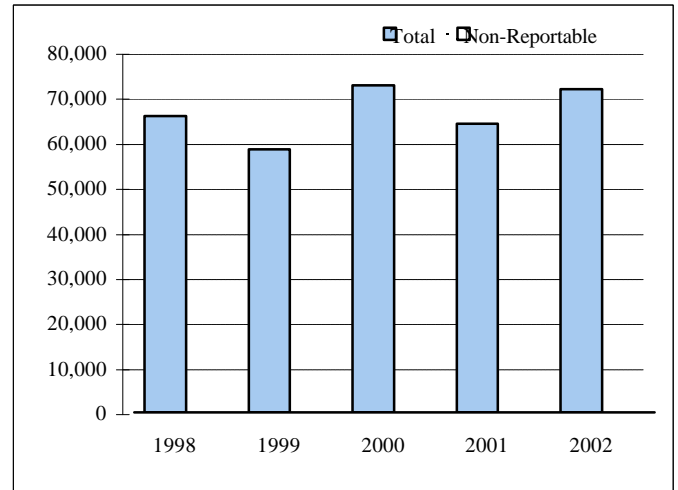
◆ Stolen and recovered in 2002. For example 337 motor vehicles were stolen from 11 division in 2002 and out of which 241 were recovered as of 2002/12/31. Recovery statistics *do not* represent the recovery workload of divisions.

# Toronto Highlights - Traffic Collisions

Source for all figures: Toronto Traffic Data Centre and Safety Bureau

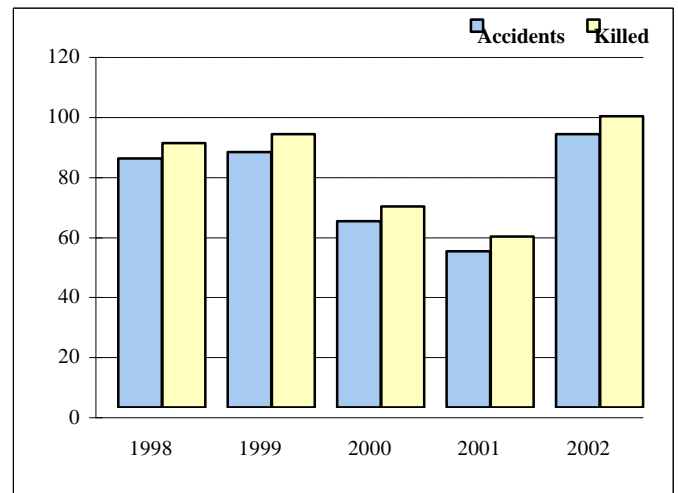
## Total Collisions (Excludes Non-Reportable Collisions)

Year	Total	% Change	Non-Reportable
1998	65,765	#VALUE!	N/A
1999	58,450	-11.1	N/A
2000	72,540	24.1	N/A
2001	64,113	-11.6	N/A
<b>2002</b>	<b>71,760</b>	<b>11.9</b>	<b>N/A</b>



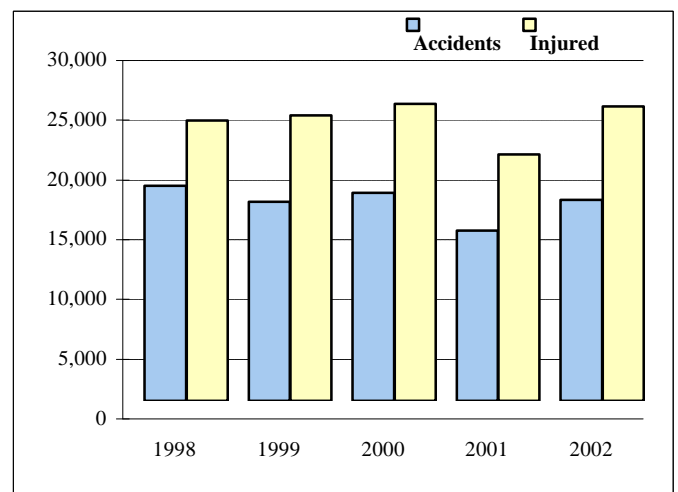
## Fatal Collisions and Persons Killed

Year	Accidents	% Change	Killed
1998	83	5.1	88
1999	85	2.4	91
2000	62	-27.1	67
2001	52	-16.1	57
<b>2002</b>	<b>91</b>	<b>75.0</b>	<b>97</b>



## Injury Collisions and Persons Injured

Year	Accidents	% Change	Injured
1998	17,979	5.2	23,455
1999	16,662	-7.3	23,895
2000	17,404	4.5	24,867
2001	14,239	-18.2	20,614
<b>2002</b>	<b>16,839</b>	<b>18.3</b>	<b>24,636</b>

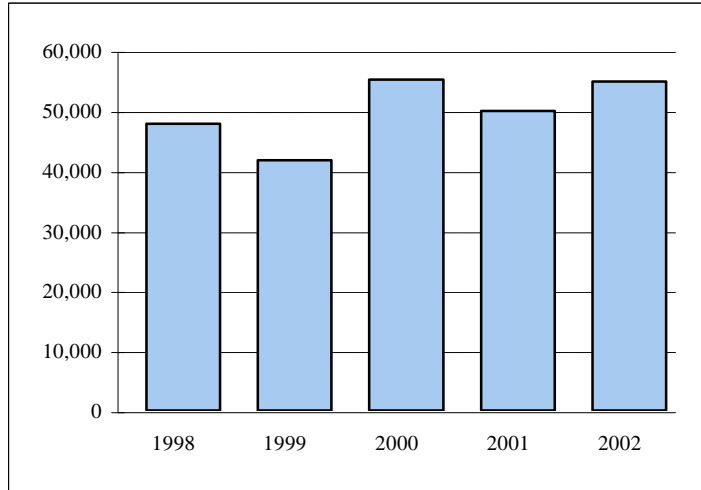


General Note: 2002 statistics are unofficial as Toronto Transportation has not yet officially released them as of press time. However, any variances to these figures will be minimum.

Source for all figures: Toronto Traffic Data Centre and Safety Bureau

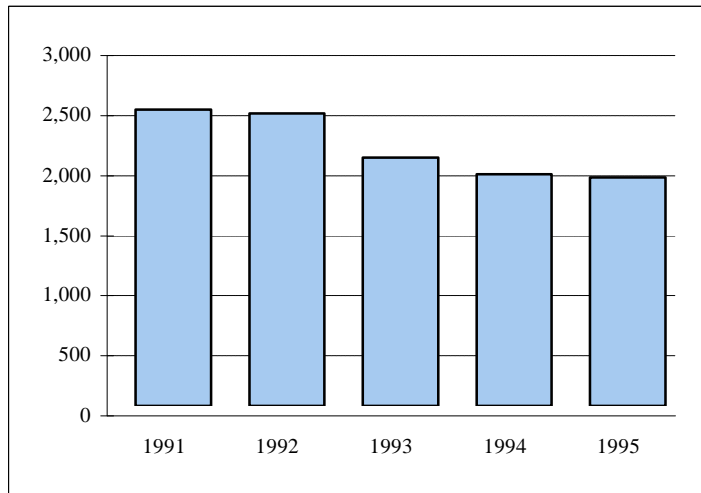
**Property Damage Collisions**

Year	Accidents	% Change
1998	47,734	-12.9
1999	41,703	-12.6
2000	55,076	32.1
2001	49,835	-9.5
2002	54,830	10.0



**Drinking and Driving Collisions\***

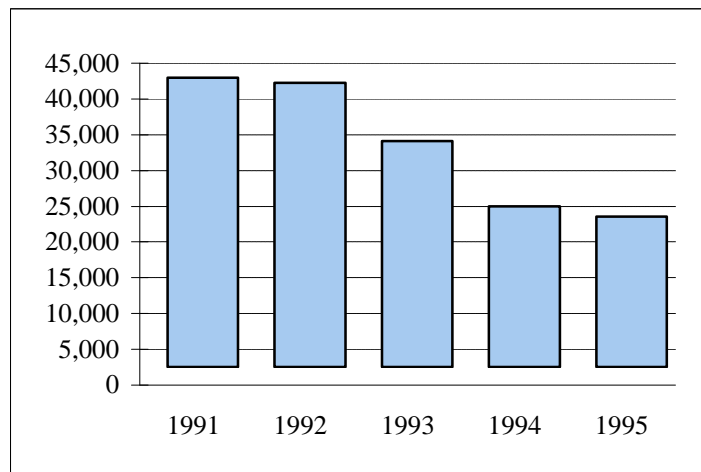
Year	Accidents	% Change
1991	2,465	-8.1
1992	2,436	-1.2
1993	2,070	-15.0
1994	1,930	-6.8
1995	1,903	-1.4



\*Due to technical reasons, these figures are not available since 1996 due to changeover to new database.

**Charges Laid in Collisions\***

Year	Charges	% Change
1991	40,471	-5.5
1992	39,715	-1.9
1993	31,625	-20.4
1994	22,431	-29.1
1995	21,037	-6.2

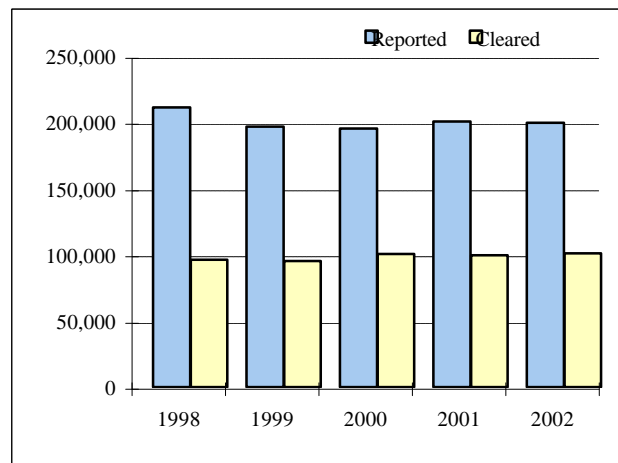


\* Includes Non-Reportable collisions. Due to technical reasons, these figures are not available since 1996 due to changeover to new database.

General Note: 2002 statistics are unofficial as Toronto Transportation has not yet officially released them as of press time. However, any variances to these figures will be minimum.

**Total Criminal Code Offences\***

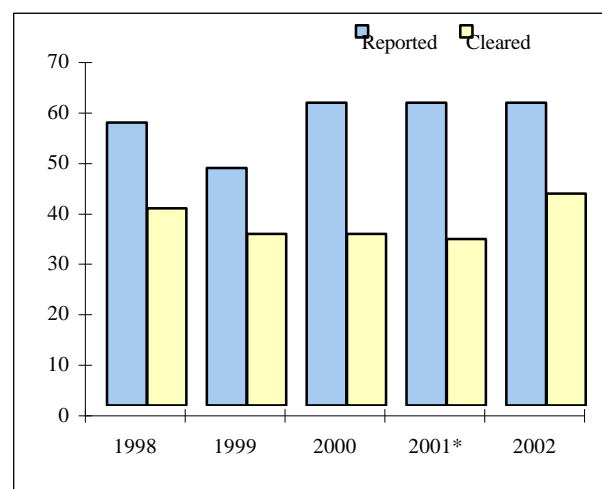
Year	Reported	% Change	Rate per 100,000 of Population	Cleared	% Cleared
1998	211,297	-8.5	8,411.2	96,173	45.5
1999	196,880	-6.8	7,756.7	95,237	48.4
2000	195,362	-0.8	7,614.7	100,367	51.4
2001	200,830	2.8	7,741.3	99,773	49.7
<b>2002</b>	<b>199,878</b>	<b>-0.5</b>	<b>7,633.0</b>	<b>100,968</b>	<b>50.5</b>



\*Excluding Criminal Code traffic offences. Statistical Reports published prior to 1997 included Criminal Code traffic offences.

**Homicides**

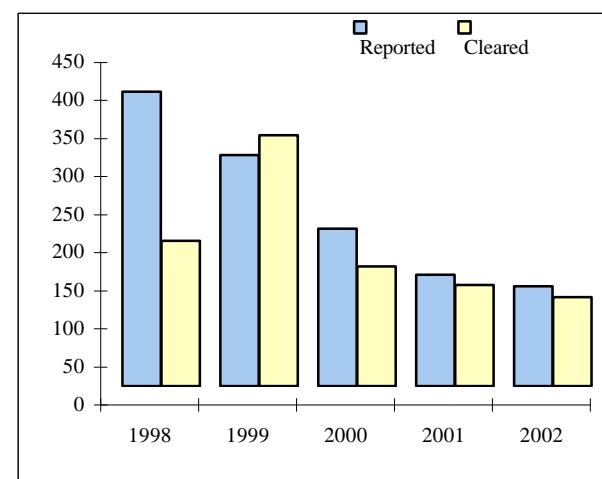
Year	Reported	% Change	Rate per 100,000 of Population	Cleared	% Cleared
1998	56	-8.2	2.2	39	69.6
1999	47	-16.1	1.9	34	72.3
2000	60	27.7	2.3	34	56.7
2001*	60	0.0	2.3	33	55.0
<b>2002</b>	<b>60</b>	<b>0.0</b>	<b>2.3</b>	<b>42</b>	<b>70.0</b>



\*Updated

**Robberies (Financial Institutions only)**

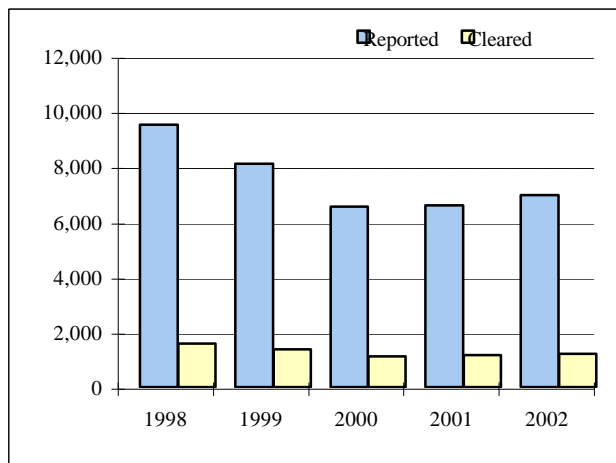
Year	Reported	% Change	Rate per 100,000 of Population	Cleared	% Cleared
1998	387	2.7	15.4	191	49.4
1999	304	-21.4	12.0	330	108.6
2000	207	-31.9	8.0	157	75.8
2001	146	-29.5	5.6	133	91.1
<b>2002</b>	<b>131</b>	<b>-10.3</b>	<b>5.0</b>	<b>117</b>	<b>89.3</b>





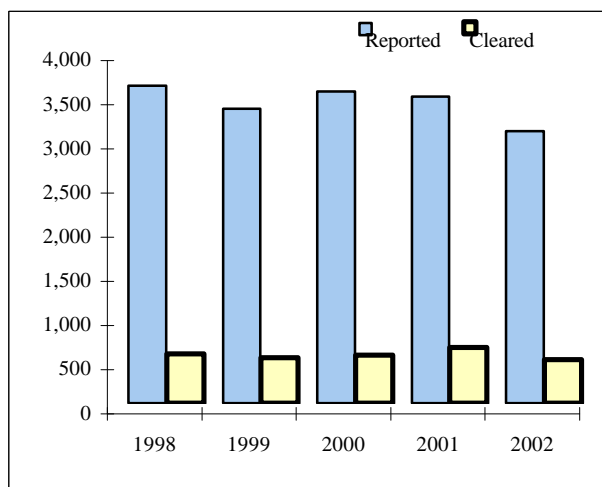
**Break and Enter - Houses**

Year	Reported	% Change	Rate per 100,000 of Population	Cleared	% Cleared
1998	9,528	-11.0	379.3	1,569	16.5
1999	8,109	-14.9	319.5	1,378	17.0
2000	6,540	-19.3	254.9	1,116	17.1
2001	6,589	0.7	254.0	1,163	17.7
<b>2002</b>	<b>6,968</b>	<b>5.8</b>	<b>266.1</b>	<b>1,206</b>	<b>17.3</b>



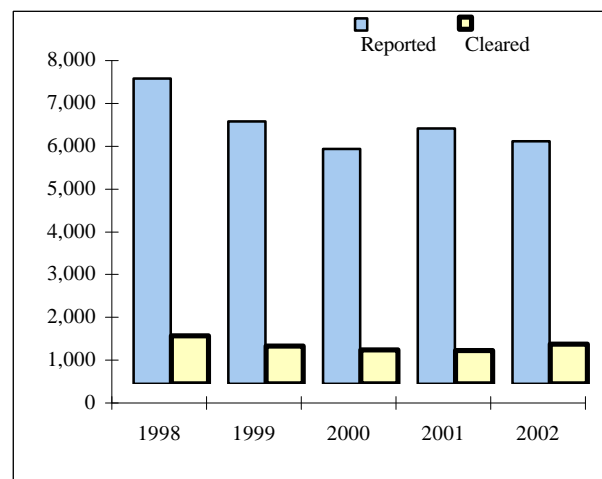
**Break and Enter - Apartments**

Year	Reported	% Change	Rate per 100,000 of Population	Cleared	% Cleared
1998	3,597	-10.7	143.2	556	15.5
1999	3,336	-7.3	131.4	518	15.5
2000	3,526	5.7	137.4	541	15.3
2001	3,469	-1.6	133.7	627	18.1
<b>2002</b>	<b>3,079</b>	<b>-11.2</b>	<b>117.6</b>	<b>495</b>	<b>16.1</b>



**Break and Enter - Business Premises**

Year	Reported	% Change	Rate per 100,000 of Population	Cleared	% Cleared
1998	7,127	-14.3	283.7	1,128	15.8
1999	6,135	-13.9	241.7	887	14.5
2000	5,487	-10.6	254.9	792	14.4
2001	5,973	8.9	233.2	771	12.9
<b>2002</b>	<b>5,669</b>	<b>-5.1</b>	<b>216.5</b>	<b>922</b>	<b>16.3</b>

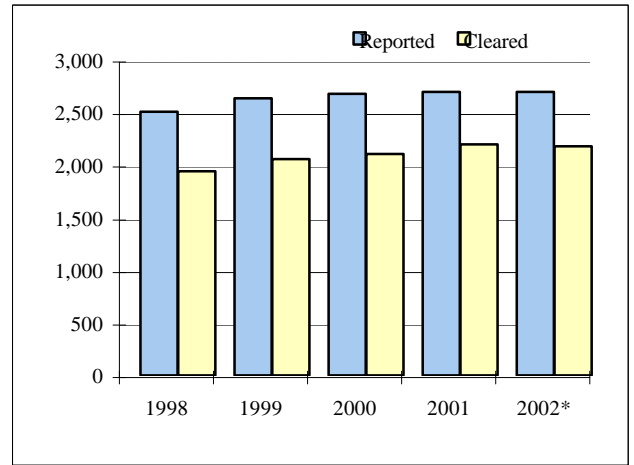


# Toronto Highlights

## Criminal Code Offences

### Sexual Assaults

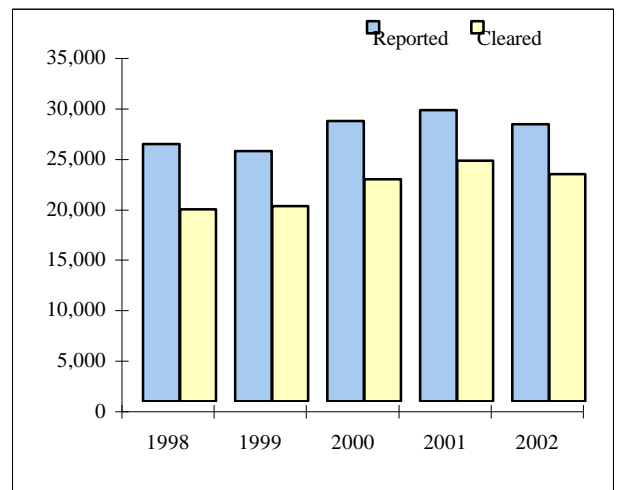
Year	Reported	% Change	Rate per 100,000 of Population	Cleared	% Cleared
1998	2,510	-10.9	99.9	1,942	77.4
1999	2,634	4.9	103.8	2,059	78.2
2000	2,679	1.7	104.4	2,108	78.7
2001	2,695	0.6	103.9	2,195	81.4
<b>2002*</b>	<b>2,696</b>	<b>0.0</b>	<b>103.0</b>	<b>2,177</b>	<b>80.7</b>



\* Includes 470 "non-assaultive" sexual offences (e.g. Invitation to Sexual Touching; Sexual Exploitation etc.)

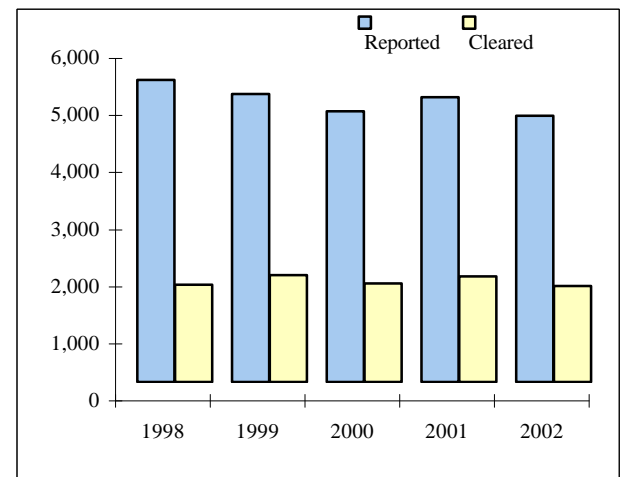
### Non-Sexual Assaults

Year	Reported	% Change	Rate per 100,000 of Population	Cleared	% Cleared
1998	25,517	-0.2	1,015.8	19,009	74.5
1999	24,821	-2.7	977.9	19,331	77.9
2000	27,770	11.9	1,082.4	22,010	79.3
2001	28,879	4.0	1,113.2	23,871	82.7
<b>2002</b>	<b>27,477</b>	<b>-4.9</b>	<b>1,049.3</b>	<b>22,484</b>	<b>81.8</b>



### Robberies (Including financial institution)

Year	Reported	% Change	Rate per 100,000 of Population	Cleared	% Cleared
1998	5,297	-5.3	210.9	1,705	32.2
1999	5,042	-4.8	198.7	1,874	37.2
2000	4,745	-5.9	185.0	1,732	36.5
2001	4,994	5.2	192.5	1,855	37.1
<b>2002</b>	<b>4,668</b>	<b>-6.5</b>	<b>178.3</b>	<b>1,677</b>	<b>35.9</b>



VIOLENT CRIME, PROPERTY CRIME, OTHER CRIME AND CRIMINAL CODE TRAFFIC OFFENCES

YEAR	VIOLENT CRIME(1)			PROPERTY CRIME(2)			OTHER CRIME(3)			C. C. TRAFFIC OFFENCES(4)			TOTAL C. C. OFFENCES(5)		
	OFFENCE	CHANGE %	CLEAR* %	OFFENCE	CHANGE %	CLEAR* %	OFFENCE	CHANGE %	CLEAR* %	OFFENCE	CHANGE %	CLEAR* %	OFFENCE	CHANGE %	CLEAR* %
1998	33,926	-2.1	68.2	116,278	-13.1	29.2	61,093	-2.3	63.9	3,640	-4.7	99.0	214,937	-8.5	46.4
1999	33,121	-2.4	71.7	105,029	-9.7	30.2	58,730	-3.9	67.7	3,802	4.5	99.3	200,682	-6.6	49.3
2000	35,837	8.2	73.5	97,138	-7.5	31.5	62,385	6.2	69.5	4,002	5.3	99.9	199,362	-0.7	52.3
2001	37,286	4.0	76.4	99,156	2.1	28.1	64,383	3.2	67.4	4,855	21.3	99.5	205,680	3.2	50.9
2002	35,502	-4.8	75.7	100,299	1.2	29.8	64,077	-0.5	68.9	4,546	-6.4	99.8	204,424	-0.6	51.6

\* Clearance rate

**Categories of Crime:**

- (1) **Violent crime** includes homicide and homicide related offences, sexual assaults, sexual offences, non-sexual assaults, abduction, and robberies.
- (2) **Property crime** includes break and enter, all types of thefts, possession of stolen goods, and fraud.
- (3) **Other crime** includes all other non-traffic Criminal Code offences not covered in categories (1) and (2).
- (4) **C. C. Traffic offences** include all Criminal Code traffic offences excluding criminal code 'Fail to Remain' traffic offences.
- (5) **Total C. C. offences** include all the above four categories. Only Criminal Code offences are shown.

**VIOLENT CRIME, PROPERTY CRIME, OTHER CRIME  
AND CRIMINAL CODE TRAFFIC OFFENCES**

TPS 2002 Statistical Report

UNIT	VIOLENT CRIME(1)			PROPERTY CRIME(2)			OTHER CRIME(3)			C. C. TRAFFIC OFFENCES(4)			TOTAL C. C. OFFENCES(5)		
	OFFENCE	RATE*	CLEAR %	OFFENCE	RATE*	CLEAR %	OFFENCE	RATE*	CLEAR %	OFFENCE	RATE*	CLEAR %	OFFENCE	RATE*	CLEAR %
D11	1,359	1,319	84.0	3,226	3,131	27.2	2,827	2,744	65.3	235	228	100.0	7,647	7,422	53.6
D12	1,835	1,904	79.4	3,184	3,304	35.5	3,205	3,326	73.4	268	278	100.0	8,492	8,813	61.4
D13	1,486	1,027	81.0	3,369	2,328	28.2	2,382	1,646	66.3	152	105	102.6	7,389	5,107	52.6
D14	2,953	1,920	70.7	7,725	5,022	28.5	4,393	2,856	65.6	350	228	100.3	15,421	10,025	48.8
D51	1,792	2,642	71.2	3,562	5,251	31.1	3,379	4,981	80.2	200	295	99.5	8,933	13,169	59.3
D52	3,053	3,981	66.6	13,655	17,807	32.2	8,545	11,143	79.0	257	335	99.2	25,510	33,266	52.7
D53	854	596	82.3	4,429	3,093	36.9	1,842	1,287	74.5	98	68	100.0	7,223	5,045	52.7
D54	1,822	1,332	77.7	3,451	2,522	25.1	2,876	2,102	67.5	197	144	98.0	8,346	6,099	52.9
D55	2,079	1,713	83.9	5,037	4,149	33.2	3,105	2,558	69.0	210	173	99.5	10,431	8,593	55.3
<b>C. F. C.</b>	<b>17,233</b>	<b>1,651</b>	<b>75.8</b>	<b>47,638</b>	<b>4,564</b>	<b>31.1</b>	<b>32,554</b>	<b>3,119</b>	<b>72.4</b>	<b>1,967</b>	<b>188</b>	<b>99.8</b>	<b>99,392</b>	<b>9,522</b>	<b>53.8</b>
D22	1,797	916	76.3	7,619	3,883	23.3	4,635	2,362	62.0	449	229	98.7	14,500	7,390	44.6
D23	2,316	1,407	74.7	6,406	3,891	26.6	3,520	2,138	61.1	289	176	100.3	12,531	7,611	46.9
D31	3,125	1,563	75.3	6,697	3,350	23.8	4,565	2,283	66.3	376	188	99.7	14,763	7,384	49.8
D32	2,013	976	72.5	7,815	3,790	31.1	4,081	1,979	61.7	277	134	100.0	14,186	6,879	47.1
D33	1,369	705	82.9	4,814	2,479	31.5	2,389	1,230	63.5	187	96	98.4	8,759	4,511	49.7
D41	3,739	1,578	74.6	9,558	4,033	37.4	6,252	2,638	70.2	553	233	99.6	20,102	8,483	56.2
D42	3,910	1,038	76.3	9,752	2,589	25.5	6,081	1,615	67.8	448	119	100.2	20,191	5,361	49.7
<b>A. F. C.</b>	<b>18,269</b>	<b>1,160</b>	<b>75.6</b>	<b>52,661</b>	<b>3,344</b>	<b>28.6</b>	<b>31,523</b>	<b>2,002</b>	<b>65.3</b>	<b>2,579</b>	<b>164</b>	<b>99.8</b>	<b>105,032</b>	<b>6,670</b>	<b>49.6</b>
<b>Toronto</b>	<b>35,502</b>	<b>1,356</b>	<b>75.7</b>	<b>100,299</b>	<b>3,830</b>	<b>29.8</b>	<b>64,077</b>	<b>2,447</b>	<b>68.9</b>	<b>4,546</b>	<b>174</b>	<b>99.8</b>	<b>204,424</b>	<b>7,807</b>	<b>51.6</b>

Note: Cleared cases may include offences committed before 2002.

**Categories of Crime:**

**C. F. C.** - Central Field Command,, **A. F. C.** - Area Field Command

- (1) **Violent crime** includes homicide and homicide related offences, sexual assaults, sexual offences, non-sexual assaults, abduction, and robberies.
- (2) **Property crime** includes break and enter, all types of thefts, possession of stolen goods, and fraud.
- (3) **Other crime** includes all other non-traffic Criminal Code offences not covered in categories (1) and (2).
- (4) **C. C. Traffic offences** include all Criminal Code traffic offences excluding criminal code 'Fail to Remain' traffic offences.
- (5) **Total C. C. offences** include all the above four categories. Only Criminal Code offences are shown.

*\* Rate per 100,000 of population  
No allowance was given to  
transient or commuting population.*

**VIOLENT CRIME, NON-VIOLENT CRIME  
AND CRIMINAL CODE TRAFFIC OFFENCES**

UNIT	VIOLENT CRIME(1)			NON-VIOLENT CRIME(2)			C. D. S. A OFFENCES(3)			C. C. TRAFFIC OFFENCES(4)			TOTAL CRIME(5)		
	OFFENCE	CLEAR	CLEAR %	OFFENCE	CLEAR	CLEAR %	OFFENCE	CLEAR	CLEAR %	OFFENCE	CLEAR	CLEAR %	OFFENCE	CLEAR	CLEAR %
D11	1,359	1,141	84.0	6,372	3,041	47.7	319	319	100.0	235	235	100.0	7,966	4,417	55.4
D12	1,835	1,457	79.4	6,905	3,990	57.8	516	505	97.9	268	268	100.0	9,008	5,715	63.4
D13	1,486	1,203	81.0	6,281	3,062	48.8	530	533	100.6	152	156	102.6	7,919	4,421	55.8
D14	2,953	2,088	70.7	13,404	6,369	47.5	1,286	1,287	100.1	350	351	100.3	16,707	8,808	52.7
D51	1,792	1,276	71.2	8,570	5,452	63.6	1,629	1,634	100.3	200	199	99.5	10,562	6,927	65.6
D52	3,053	2,032	66.6	23,332	12,285	52.7	1,132	1,134	100.2	257	255	99.2	26,642	14,572	54.7
D53	854	703	82.3	6,435	3,172	49.3	164	165	100.6	98	98	100.0	7,387	3,973	53.8
D54	1,822	1,416	77.7	6,558	3,039	46.3	231	231	100.0	197	193	98.0	8,577	4,648	54.2
D55	2,079	1,744	83.9	8,501	4,171	49.1	359	358	99.7	210	209	99.5	10,790	6,124	56.8
<b>C. F. C</b>	<b>17,233</b>	<b>13,060</b>	<b>75.8</b>	<b>86,358</b>	<b>44,581</b>	<b>51.6</b>	<b>6,166</b>	<b>6,166</b>	<b>100.0</b>	<b>1,967</b>	<b>1,964</b>	<b>99.8</b>	<b>105,558</b>	<b>59,605</b>	<b>56.5</b>
D22	1,797	1,371	76.3	12,533	4,925	39.3	279	280	100.4	449	448	99.8	14,779	6,744	45.6
D23	2,316	1,730	74.7	10,284	4,213	41.0	358	359	100.3	289	290	100.3	12,889	6,233	48.4
D31	3,125	2,354	75.3	12,051	5,410	44.9	789	787	99.7	376	375	99.7	15,552	8,139	52.3
D32	2,013	1,459	72.5	12,169	5,221	42.9	273	273	100.0	277	277	100.0	14,459	6,957	48.1
D33	1,369	1,135	82.9	7,400	3,231	43.7	197	196	99.5	187	184	98.4	8,956	4,550	50.8
D41	3,739	2,788	74.6	16,252	8,409	51.7	442	448	101.4	553	551	99.6	20,544	11,748	57.2
D42	3,910	2,983	76.3	16,525	7,305	44.2	692	698	100.9	448	449	100.2	20,883	10,737	51.4
<b>A. F. C.</b>	<b>18,269</b>	<b>13,820</b>	<b>75.6</b>	<b>87,214</b>	<b>38,714</b>	<b>44.4</b>	<b>3,030</b>	<b>3,041</b>	<b>100.4</b>	<b>2,579</b>	<b>2,574</b>	<b>99.8</b>	<b>108,062</b>	<b>55,108</b>	<b>51.0</b>
<b>Toronto</b>	<b>35,502</b>	<b>26,880</b>	<b>75.7</b>	<b>173,572</b>	<b>83,295</b>	<b>48.0</b>	<b>9,196</b>	<b>9,207</b>	<b>100.1</b>	<b>4,546</b>	<b>4,538</b>	<b>99.8</b>	<b>213,620</b>	<b>114,713</b>	<b>53.7</b>

Note: Cleared cases may include offences committed before 2002.

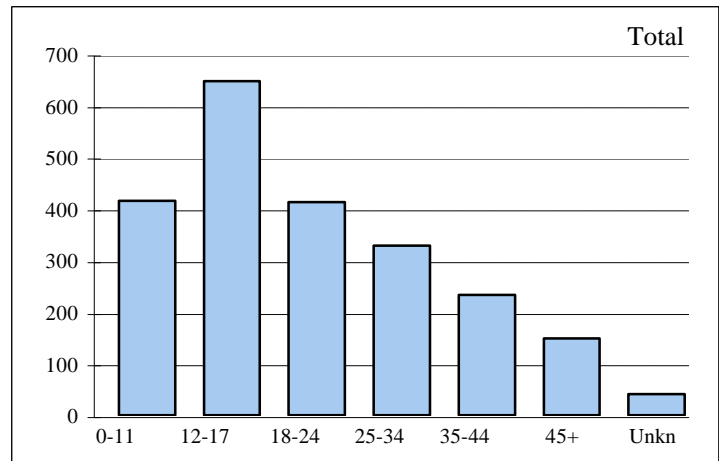
C. F. C. - Central Field Command, A. F. C. - Area Field Command

**Categories of Crime:**

- (1) **Violent crime** includes homicide and homicide related offences, sexual assaults, sexual offences, non-sexual assaults, abduction, and robberies.
- (2) **Non-Violent crime** includes 'Property crime' and 'Other crime' included in page 17, and C. D. S. A. offences.
- (3) **C. D. S. A. - Controlled Drugs and Substances Act**(Already included in item 2)
- (4) **C. C. Traffic offences** include all Criminal Code traffic offences excluding criminal code 'Fail to remain' offences.
- (5) **Total crime** include items (1), (2) and (4). The difference between the totals in pages 17 and 18 is that the total in page 18 includes C. D. S. A. offences.

**Sexual Assaults\***

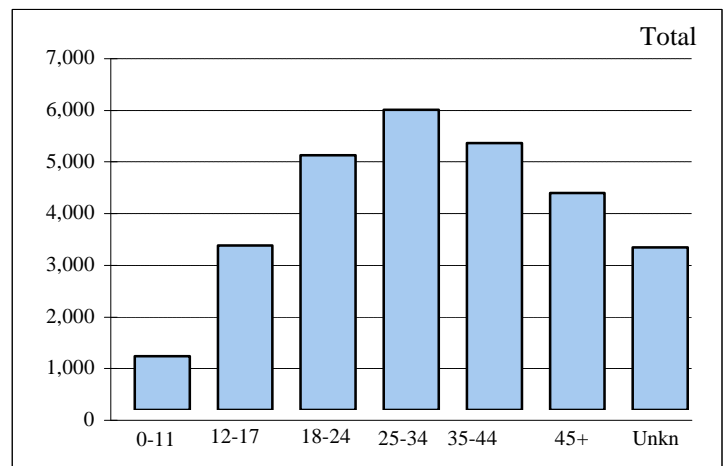
Age	Males	Females	Total	% of Total
0-11	97	318	415	18.64
12-17	41	606	647	29.07
18-24	24	389	413	18.55
25-34	29	299	328	14.73
35-44	20	213	233	10.47
45+	4	145	149	6.69
Unkn	3	38	41	1.84
<b>Total</b>	<b>218</b>	<b>2,008</b>	<b>2,226</b>	<b>100.00</b>



\*Includes all types of Sexual Assaults, but excludes 470 Sexual Offences included on page 15.

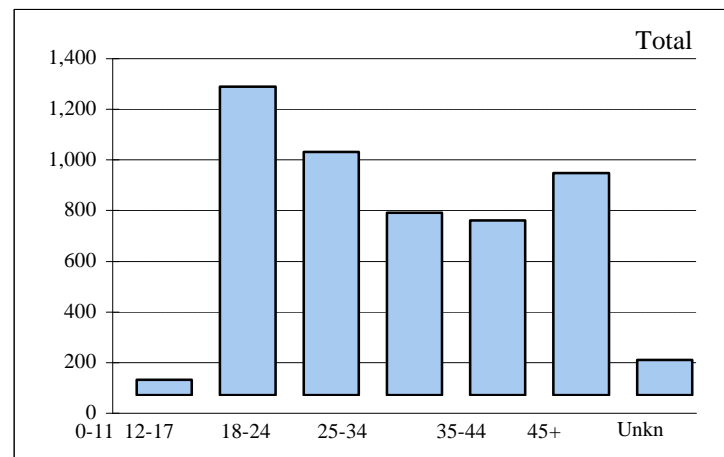
**Non-Sexual Assaults**

Age	Males	Females	Total	% of Total
0-11	685	352	1,037	3.77
12-17	1,719	1,461	3,180	11.57
18-24	2,266	2,660	4,926	17.93
25-34	2,713	3,100	5,813	21.16
35-44	2,552	2,616	5,168	18.81
45+	2,281	1,921	4,202	15.29
Unkn	2,348	800	3,148	11.46
<b>Total</b>	<b>14,564</b>	<b>12,910</b>	<b>27,474</b>	<b>100.00</b>



**Robberies**

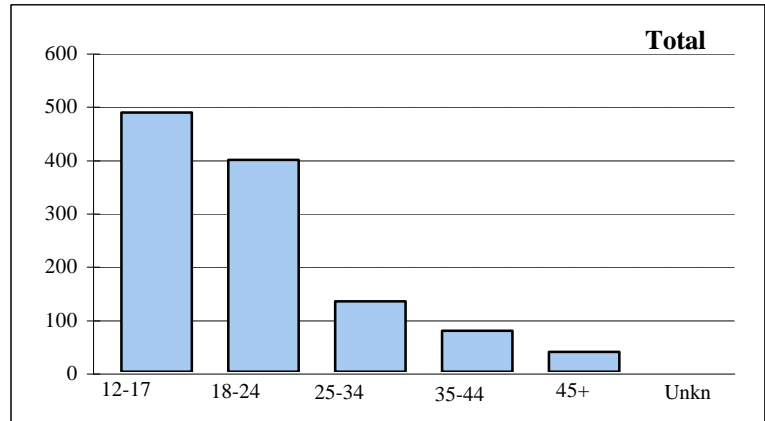
Age	Males	Females	Total	% of Total
0-11	51	10	61	1.31
12-17	1,093	125	1,218	26.09
18-24	693	268	961	20.59
25-34	471	249	720	15.42
35-44	436	254	690	14.78
45+	490	388	878	18.81
Unkn	107	33	140	3.00
<b>Total</b>	<b>3,341</b>	<b>1,327</b>	<b>4,668</b>	<b>100.00</b>



These are offences against persons and not the number of persons(victims). A person can be a victim of more than one offence.

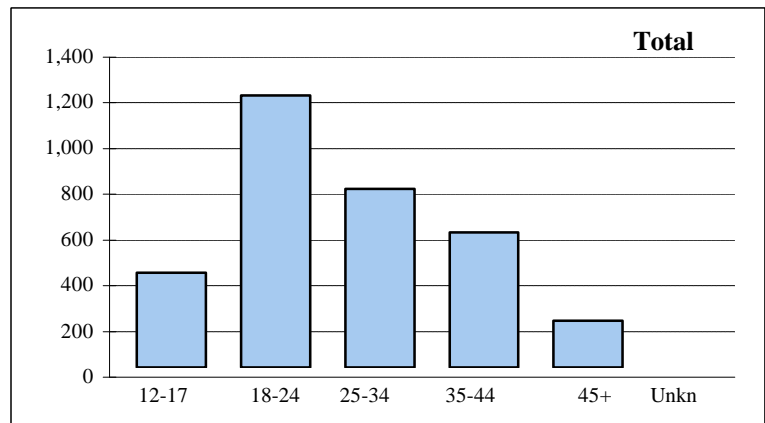
**Robberies**

Age	Males	Females	Total	% of Total
12-17	444	42	<b>486</b>	43.05
18-24	366	31	<b>397</b>	35.16
25-34	117	15	<b>132</b>	11.69
35-44	60	17	<b>77</b>	6.82
45+	34	3	<b>37</b>	3.28
Unkn	0	0	<b>0</b>	0.00
<b>Total</b>	<b>1,021</b>	<b>108</b>	<b>1,129</b>	<b>100.00</b>



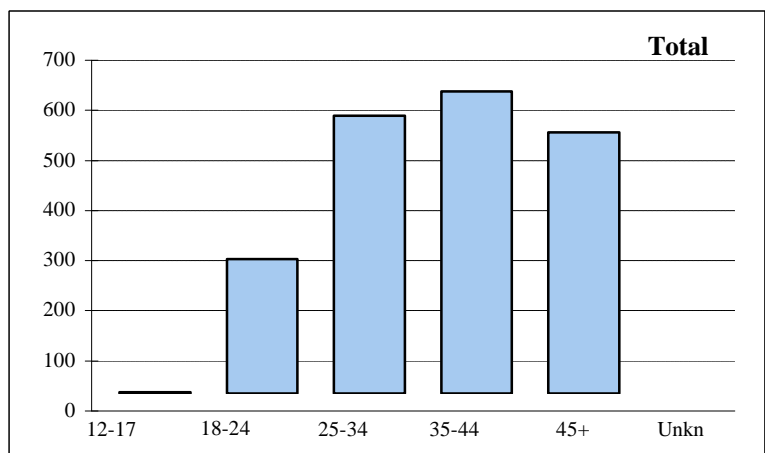
**Controlled Drugs and Substances Act**

Age	Males	Females	Total	% of Total
12-17	366	49	<b>415</b>	13.05
18-24	1,065	125	<b>1,190</b>	37.41
25-34	682	99	<b>781</b>	24.55
35-44	490	101	<b>591</b>	18.58
45+	176	28	<b>204</b>	6.41
Unkn	0	0	<b>0</b>	0.00
<b>Total</b>	<b>2,779</b>	<b>402</b>	<b>3,181</b>	<b>100.00</b>



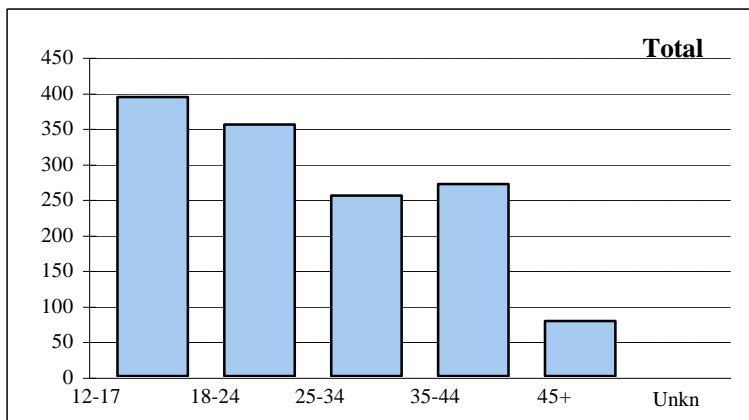
**Drinking and Driving Offences**

Age	Males	Females	Total	% of Total
12-17	3	0	<b>3</b>	0.15
18-24	234	34	<b>268</b>	13.74
25-34	509	46	<b>555</b>	28.46
35-44	537	66	<b>603</b>	30.92
45+	463	58	<b>521</b>	26.72
Unkn	0	0	<b>0</b>	0.00
<b>Total</b>	<b>1,746</b>	<b>204</b>	<b>1,950</b>	<b>100.00</b>



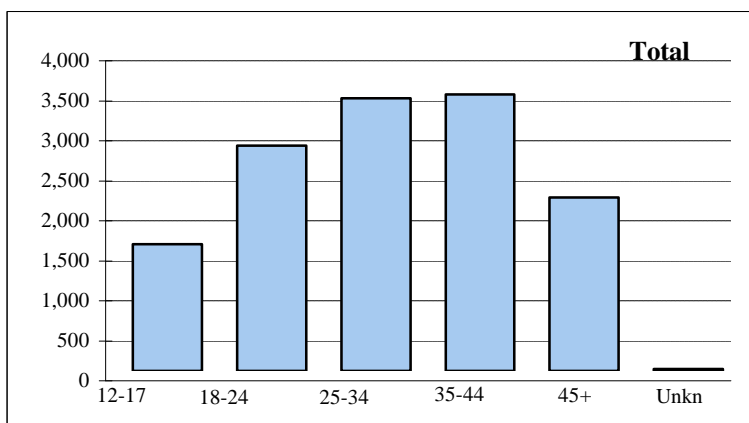
**Break and Enters**

Age	Males	Females	Total	% of Total
12-17	355	37	<b>392</b>	29.10
18-24	325	29	<b>354</b>	26.28
25-34	232	22	<b>254</b>	18.86
35-44	249	21	<b>270</b>	20.04
45+	73	4	<b>77</b>	5.72
Unkn	0	0	<b>0</b>	0.00
<b>Total</b>	<b>1,234</b>	<b>113</b>	<b>1,347</b>	<b>100.00</b>



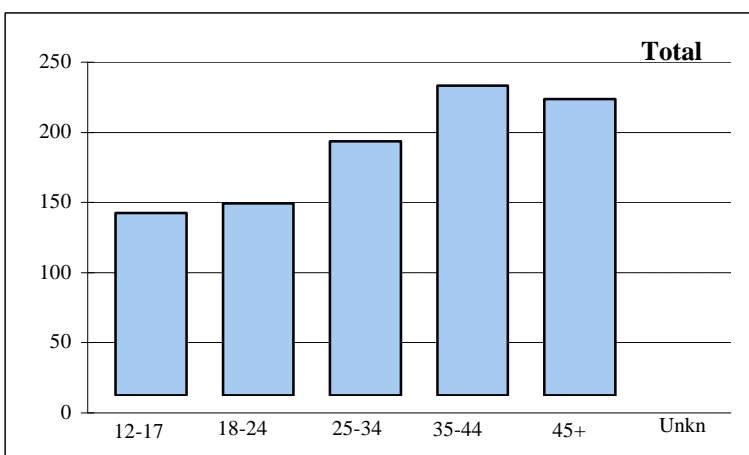
**Non-Sexual Assaults**

Age	Males	Females	Total	% of Total
12-17	1,118	469	<b>1,587</b>	11.79
18-24	2,314	505	<b>2,819</b>	20.95
25-34	2,718	688	<b>3,406</b>	25.31
35-44	2,788	665	<b>3,453</b>	25.66
45+	1,829	338	<b>2,167</b>	16.10
Unkn	19	8	<b>27</b>	0.20
<b>Total</b>	<b>10,786</b>	<b>2,673</b>	<b>13,459</b>	<b>100.00</b>



**Sexual Assaults**

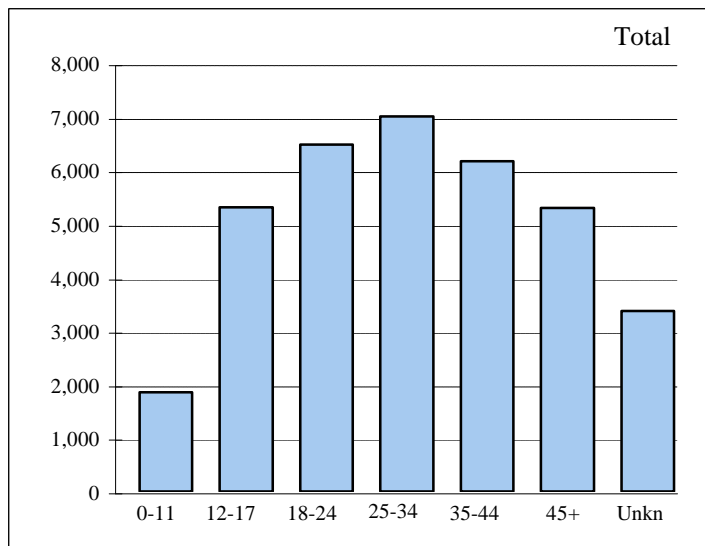
Age	Males	Females	Total	% of Total
12-17	123	7	<b>130</b>	14.77
18-24	135	2	<b>137</b>	15.57
25-34	178	3	<b>181</b>	20.57
35-44	218	3	<b>221</b>	25.11
45+	209	2	<b>211</b>	23.98
Unkn	0	0	<b>0</b>	0.00
<b>Total</b>	<b>863</b>	<b>17</b>	<b>880</b>	<b>100.00</b>





**Violent Crime\***

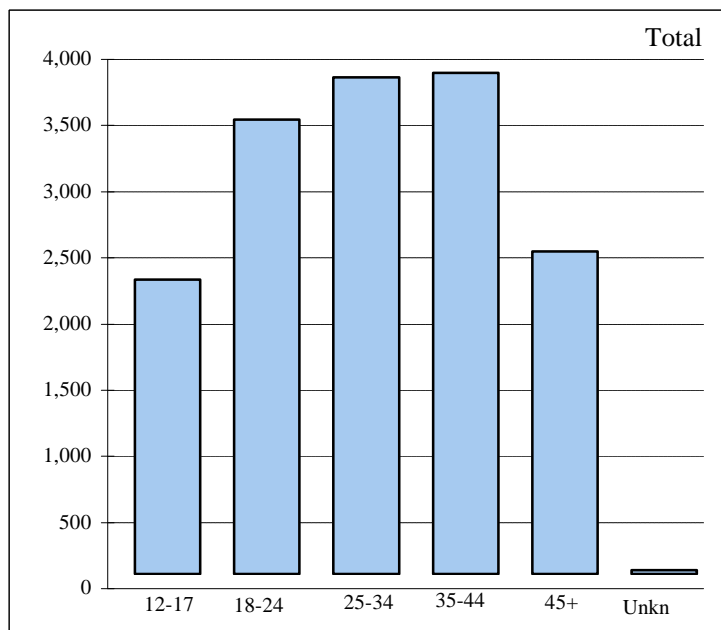
Age	Males	Females	Total	% of Total
0-11	909	944	<b>1,853</b>	5.22
12-17	2,893	2414	<b>5,307</b>	14.95
18-24	3,067	3419	<b>6,486</b>	18.27
25-34	3,273	3733	<b>7,006</b>	19.73
35-44	3,041	3135	<b>6,176</b>	17.40
45+	2,807	2490	<b>5,297</b>	14.92
Unkn	2,477	900	<b>3,377</b>	9.51
<b>Total</b>	<b>18,467</b>	<b>17,035</b>	<b>35,502</b>	<b>100.00</b>



\* **Violent crime** includes homicide and homicide related offences, sexual assaults, sexual offences, non-sexual assaults, abduction, and robberies.

**Persons charged for violent crime**

Age	Males	Females	Total	% of Total
12-17	1,705	522	<b>2,227</b>	14.21
18-24	2,893	541	<b>3,434</b>	21.92
25-34	3,044	709	<b>3,753</b>	23.95
35-44	3,094	691	<b>3,785</b>	24.16
45+	2,093	347	<b>2,440</b>	15.57
Unkn	20	8	<b>28</b>	0.18
<b>Total</b>	<b>12,849</b>	<b>2,818</b>	<b>15,667</b>	<b>100.00</b>



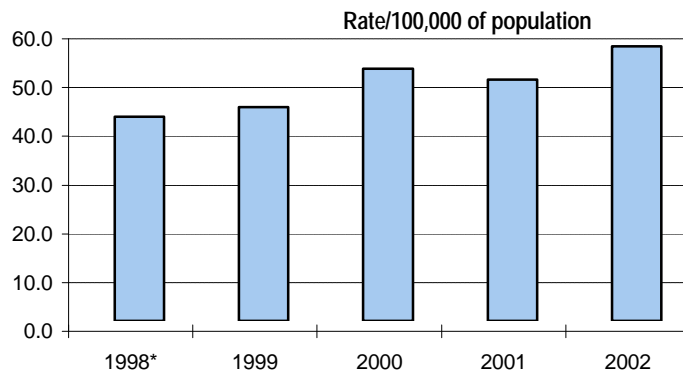
☞ These are violent offences against persons and not the number of persons(victims).

A person can be a victim of more than one offence.

# Selected Offences Against Police Officers

	1998	1999	2000	2001	2001
Murder	1	0	0	0	0
Attempted Murder	4	2	2	4	4
Aggravated Assault	4	6	4	7	5
Assault With Weapon or Causing Bodily Harm	54	78	102	97	91
Assault	124	95	108	90	74
Assault Police Officer	464	519	585	581	699
Assault to Resist Arrest	395	411	509	492	583
Attempt to choke, strangle, etc.	1	0	0	0	0
Point/dangerous use of firearm	1	9	14	11	13
Dangerous operation of a motor vehicle causing bodily harm	4	2	4	1	4
<b>Total offences</b>	<b>1,052</b>	<b>1,122</b>	<b>1,328</b>	<b>1,283</b>	<b>1,473</b>

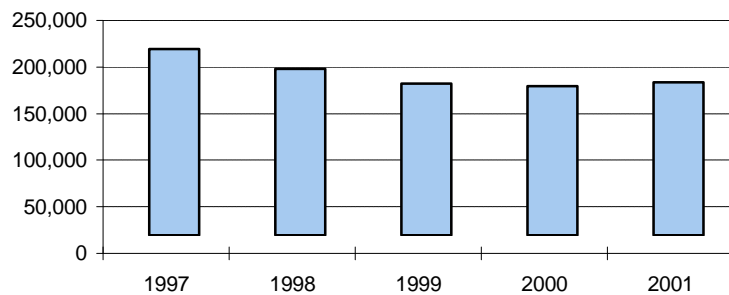
Year	No: of Offences	Rate/100,000 Population	Variance in Rate(%)
1998*	1,052	41.9	14.5
1999	1,122	43.8	4.5
2000	1,328	51.8	18.3
2001	1,283	49.5	-4.4
2002	1,473	56.3	13.7



\* 1 murder

## Incidents as Reported to Statistics Canada\*

Year	Incidents
1997	199,923
1998	178,789
1999	162,726
2000	160,349
2001	164,353



\* Total Criminal Code(C.C.), excluding C. C. Traffic incidents.  
 Value for 2002 is not available from Statistics Canada at press time;  
 the 2003 annual report will contain this information.

# Criminal Code Offences Reported and Cleared\*- Field Command and Toronto Totals

TPS 2002 Statistical Report

	First Degree Murder	Second Degree Murder	Manslaughter	Attempted Murder	Sexual Assault	Other Assault	Robbery	Break and Enter	Theft of Motor Vehicle**	Theft Over \$5,000	Theft Under \$5,000	Fraud	Offensive Weapons offences	Other Criminal Code	Total Criminal Code Non-Traffic	Criminal Code Traffic†	Total Criminal Code
--	---------------------	----------------------	--------------	------------------	----------------	---------------	---------	-----------------	--------------------------	--------------------	---------------------	-------	----------------------------	---------------------	---------------------------------	------------------------	---------------------

Central Field Command

Reported	21	5	0	45	1,080	13,587	2,079	7,447	4,391	903	27,162	4,342	2,219	34,144	<b>97,425</b>	<b>1,967</b>	<b>99,392</b>
Cleared	13	6	0	35	816	11,039	776	1,531	726	151	6,221	2,809	2,177	25,175	<b>51,475</b>	<b>1,964</b>	<b>53,439</b>
% Cleared	61.9	120.0	0.0	77.8	75.6	81.2	37.3	20.6	16.5	16.7	22.9	64.7	98.1	73.7	<b>52.8</b>	<b>99.8</b>	<b>53.8</b>

Area Field Command

Reported	24	9	1	71	1,146	13,890	2,589	8,335	8,563	959	26,065	5,534	2,529	32,738	<b>102,453</b>	<b>2,579</b>	<b>105,032</b>
Cleared	13	9	1	43	912	11,445	901	1,102	940	163	6,330	3,337	2,440	21,857	<b>49,493</b>	<b>2,574</b>	<b>52,067</b>
% Cleared	54.2	100.0	100.0	60.6	79.6	82.4	34.8	13.2	11.0	17.0	24.3	60.3	96.5	66.8	<b>48.3</b>	<b>99.8</b>	<b>49.6</b>

Toronto Total

Reported	45	14	1	116	2,226	27,477	4,668	15,782	12,954	1,862	53,227	9,876	4,748	66,882	<b>199,878</b>	<b>4,546</b>	<b>204,424</b>
Cleared	26	15	1	78	1,728	22,484	1,677	2,633	1,666	314	12,551	6,146	4,617	47,032	<b>100,968</b>	<b>4,538</b>	<b>105,506</b>
% Cleared	57.8	107.1	100.0	67.2	77.6	81.8	35.9	16.7	12.9	16.9	23.6	62.2	97.2	70.3	<b>50.5</b>	<b>99.8</b>	<b>51.6</b>

\* Cleared cases may include offences reported prior to 2002.

\*\* Include motor cycle and snow vehicle and all attempts.

† Statistics do not include Criminal Code 'Fail to Remain' offences.

# Criminal Code Offences Reported and Cleared\*- Central Field Command

TPS 2002 Statistical Report

		First Degree Murder	Second Degree Murder	Manslaughter	Attempted Murder	Sexual Assault	Other Assault	Robbery	Break and Enter	Theft of Motor Vehicle**	Theft Over \$5,000	Theft Under \$5,000	Fraud	Offensive Weapons Offences	Other Criminal Code	Total Criminal Code Non-Traffic	Criminal Code Traffic†	Total Criminal Code
11 Division	Reported	1	0	0	2	97	1,092	135	598	380	32	1,763	249	122	2,941	<b>7,412</b>	<b>235</b>	<b>7,647</b>
	Cleared	1	0	0	1	73	964	70	102	57	5	362	147	117	1,964	<b>3,863</b>	<b>235</b>	<b>4,098</b>
	% Cleared	100.0	0.0	0.0	50.0	75.3	88.3	51.9	17.1	15.0	15.6	20.5	59.0	95.9	66.8	<b>52.1</b>	<b>100.0</b>	<b>53.6</b>
12 Division	Reported	3	1	0	10	98	1,517	156	480	443	34	1,638	381	371	3,092	<b>8,224</b>	<b>268</b>	<b>8,492</b>
	Cleared	1	1	0	9	75	1,273	52	101	71	10	506	240	356	2,247	<b>4,942</b>	<b>268</b>	<b>5,210</b>
	% Cleared	33.3	100.0	0.0	90.0	76.5	83.9	33.3	21.0	16.0	29.4	30.9	63.0	96.0	72.7	<b>60.1</b>	<b>100.0</b>	<b>61.4</b>
13 Division	Reported	5	1	0	4	97	1,173	149	696	469	62	1,601	301	191	2,488	<b>7,237</b>	<b>152</b>	<b>7,389</b>
	Cleared	4	1	0	4	80	1,003	58	166	70	10	329	130	196	1,681	<b>3,732</b>	<b>156</b>	<b>3,888</b>
	% Cleared	80.0	100.0	0.0	100.0	82.5	85.5	38.9	23.9	14.9	16.1	20.5	43.2	102.6	67.6	<b>51.6</b>	<b>102.6</b>	<b>52.6</b>
14 Division	Reported	5	0	0	5	175	2,377	333	1,085	683	140	4,487	648	357	4,776	<b>15,071</b>	<b>350</b>	<b>15,421</b>
	Cleared	4	0	0	5	143	1,759	131	260	118	31	737	373	349	3,260	<b>7,170</b>	<b>351</b>	<b>7,521</b>
	% Cleared	80.0	0.0	0.0	100.0	81.7	74.0	39.3	24.0	17.3	22.1	16.4	57.6	97.8	68.3	<b>47.6</b>	<b>100.3</b>	<b>48.8</b>
51 Division	Reported	2	1	0	10	99	1,367	273	582	354	63	1,945	171	234	3,632	<b>8,733</b>	<b>200</b>	<b>8,933</b>
	Cleared	1	1	0	5	68	1,087	78	155	74	7	316	108	230	2,964	<b>5,094</b>	<b>199</b>	<b>5,293</b>
	% Cleared	50.0	100.0	0.0	50.0	68.7	79.5	28.6	26.6	20.9	11.1	16.2	63.2	98.3	81.6	<b>58.3</b>	<b>99.5</b>	<b>59.3</b>

\* Cleared cases may include offences reported prior to 2002.

\*\* Include motor cycle and snow vehicle and all attempts.

† Statistics do not include Criminal Code 'Fail to Remain' offences.

## Criminal Code Offences Reported and Cleared\*- Central Field Command(Cont'd)

TPS 2002 Statistical Report

	First Degree Murder	Second Degree Murder	Manslaughter	Attempted Murder	Sexual Assault	Other Assault	Robbery	Break and Enter	Theft of Motor Vehicle**	Theft Over \$5,000	Theft Under \$5,000	Fraud	Offensive Weapons Offences	Other Criminal Code	Total Criminal Code Non-Traffic	Criminal Code Traffic†	Total Criminal Code	
52 Division	Reported	3	0	0	6	179	2,356	458	1,288	514	379	9,090	1,435	372	9,173	<b>25,253</b>	257	25,510
	Cleared	0	0	0	4	121	1,742	125	259	93	41	1,927	1,128	366	7,377	<b>13,183</b>	255	13,438
	% Cleared	0.0	0.0	0.0	66.7	67.6	73.9	27.3	20.1	18.1	10.8	21.2	78.6	98.4	80.4	<b>52.2</b>	<b>99.2</b>	<b>52.7</b>
53 Division	Reported	0	0	0	1	81	620	120	944	495	99	2,256	496	128	1,885	<b>7,125</b>	98	7,223
	Cleared	0	0	0	1	66	551	54	195	83	30	947	240	128	1,415	<b>3,710</b>	98	3,808
	% Cleared	0.0	0.0	0.0	100.0	81.5	88.9	45.0	20.7	16.8	30.3	42.0	48.4	100.0	75.1	<b>52.1</b>	<b>100.0</b>	<b>52.7</b>
54 Division	Reported	2	0	0	3	129	1,411	215	780	477	48	1,627	321	180	2,956	<b>8,149</b>	197	8,346
	Cleared	2	0	0	3	88	1,177	89	110	67	7	269	213	173	2,026	<b>4,224</b>	193	4,417
	% Cleared	100.0	0.0	0.0	100.0	68.2	83.4	41.4	14.1	14.0	14.6	16.5	66.4	96.1	68.5	<b>51.8</b>	<b>98.0</b>	<b>52.9</b>
55 Division	Reported	0	2	0	4	125	1,674	240	994	576	46	2,755	340	264	3,201	<b>10,221</b>	210	10,431
	Cleared	0	3	0	3	102	1,483	119	183	93	10	828	230	262	2,241	<b>5,557</b>	209	5,766
	% Cleared	0.0	150.0	0.0	75.0	81.6	88.6	49.6	18.4	16.1	21.7	30.1	67.6	99.2	70.0	<b>54.4</b>	<b>99.5</b>	<b>55.3</b>
Central Command	Reported	21	5	0	45	1,080	13,587	2,079	7,447	4,391	903	27,162	4,342	2,219	34,144	<b>97,425</b>	<b>1,967</b>	99,392
	Cleared	13	6	0	35	816	11,039	776	1,531	726	151	6,221	2,809	2,177	25,175	<b>51,475</b>	<b>1,964</b>	53,439
	% Cleared	61.9	120.0	0.0	77.8	75.6	81.2	37.3	20.6	16.5	16.7	22.9	64.7	98.1	73.7	<b>52.8</b>	<b>99.8</b>	<b>53.8</b>

\* Cleared cases may include offences reported prior to 2002.

\*\* Include motor cycle and snow vehicle and all attempts.

† Statistics do not include Criminal Code 'Fail to Remain' offences.

# Criminal Code Offences Reported and Cleared\*- Area Field Command

TPS 2002 Statistical Report

	First Degree Murder	Second Degree Murder	Manslaughter	Attempted Murder	Sexual Assault	Other Assault	Robbery	Break and Enter	Theft of Motor Vehicle**	Theft Over \$5,000	Theft Under \$5,000	Fraud	Offensive Weapons Offences	Other Criminal Code	Total Criminal Code Non-Traffic	Criminal Code Traffic†	Total Criminal Code
--	---------------------	----------------------	--------------	------------------	----------------	---------------	---------	-----------------	--------------------------	--------------------	---------------------	-------	----------------------------	---------------------	---------------------------------	------------------------	---------------------

22 Division	Reported	1	1	0	4	95	1,423	235	1,106	1,201	181	4,113	674	169	4,848	<b>14,051</b>	<b>449</b>	<b>14,500</b>
	Cleared	1	1	0	4	76	1,151	102	144	133	22	696	440	158	3,088	<b>6,016</b>	<b>448</b>	<b>6,464</b>
	% Cleared	100.0	100.0	0.0	100.0	80.0	80.9	43.4	13.0	11.1	12.2	16.9	65.3	93.5	63.7	42.8	<b>99.8</b>	<b>44.6</b>

23 Division	Reported	1	3	0	3	160	1,815	287	656	1,261	166	3,293	618	307	3,672	<b>12,242</b>	<b>289</b>	<b>12,531</b>
	Cleared	1	2	0	3	125	1,459	102	73	106	13	774	325	290	2,311	<b>5,584</b>	<b>290</b>	<b>5,874</b>
	% Cleared	100.0	66.7	0.0	100.0	78.1	80.4	35.5	11.1	8.4	7.8	23.5	52.6	94.5	62.9	45.6	<b>100.3</b>	<b>46.9</b>

31 Division	Reported	5	0	0	11	178	2,397	419	888	1,299	115	3,197	838	548	4,492	<b>14,387</b>	<b>376</b>	<b>14,763</b>
	Cleared	1	0	0	8	126	1,979	136	99	130	17	576	415	526	2,964	<b>6,977</b>	<b>375</b>	<b>7,352</b>
	% Cleared	20.0	0.0	0.0	72.7	70.8	82.6	32.5	11.1	10.0	14.8	18.0	49.5	96.0	66.0	48.5	<b>99.7</b>	<b>49.8</b>

32 Division	Reported	1	0	0	6	116	1,540	284	1,017	1,157	138	3,999	982	218	4,451	<b>13,909</b>	<b>277</b>	<b>14,186</b>
	Cleared	3	0	0	5	89	1,197	105	88	112	17	1,002	688	214	2,887	<b>6,407</b>	<b>277</b>	<b>6,684</b>
	% Cleared	300.0	0.0	0.0	83.3	76.7	77.7	37.0	8.7	9.7	12.3	25.1	70.1	98.2	64.9	46.1	<b>100.0</b>	<b>47.1</b>

\* Cleared cases may include offences reported prior to 2002.

\*\* Include motor cycle and snow vehicle and all attempts.

† Statistics do not include Criminal Code 'Fail to Remain' offences.

## Criminal Code Offences Reported and Cleared\* Area Field Command(Cont'd)

TPS 2002 Statistical Report

	First Degree Murder	Second Degree Murder	Manslaughter	Attempted Murder	Sexual Assault	Other Assault	Robbery	Break and Enter	Theft of Motor Vehicle**	Theft Over \$5,000	Theft Under \$5,000	Fraud	Offensive Weapons Offences	Other Criminal Code	Total Criminal Code Non-Traffic	Criminal Code Traffic†	Total Criminal Code
--	---------------------	----------------------	--------------	------------------	----------------	---------------	---------	-----------------	--------------------------	--------------------	---------------------	-------	----------------------------	---------------------	---------------------------------	------------------------	---------------------

33 Division	Reported	2	0	1	3	111	1,024	179	862	567	91	2,372	604	165	2,591	<b>8,572</b>	<b>187</b>	<b>8,759</b>
	Cleared	1	0	1	0	89	919	78	146	64	26	650	313	164	1,719	<b>4,170</b>	<b>184</b>	<b>4,354</b>
	%Cleared	50.0	0.0	100.0	0.0	80.2	89.7	43.6	16.9	11.3	28.6	27.4	51.8	99.4	66.3	<b>48.6</b>	<b>98.4</b>	<b>49.7</b>

41 Division	Reported	8	3	0	18	258	2,773	551	1,689	1,390	128	4,577	1,035	472	6,647	<b>19,549</b>	<b>553</b>	<b>20,102</b>
	Cleared	2	4	0	11	207	2,247	196	258	161	35	1,557	817	455	4,799	<b>10,749</b>	<b>551</b>	<b>11,300</b>
	% Cleared	25.0	133.3	0.0	61.1	80.2	81.0	35.6	15.3	11.6	27.3	34.0	78.9	96.4	72.2	<b>55.0</b>	<b>99.6</b>	<b>56.2</b>

42 Division	Reported	6	2	0	26	228	2,918	634	2,117	1,688	140	4,514	783	650	6,037	<b>19,743</b>	<b>448</b>	<b>20,191</b>
	Cleared	4	2	0	12	200	2,493	182	294	234	33	1,075	339	633	4,089	<b>9,590</b>	<b>449</b>	<b>10,039</b>
	% Cleared	66.7	100.0	0.0	46.2	87.7	85.4	28.7	13.9	13.9	23.6	23.8	43.3	97.4	67.7	<b>48.6</b>	<b>100.2</b>	<b>49.7</b>

Area Field Command	Reported	24	9	1	71	1,146	13,890	2,589	8,335	8,563	959	26,065	5,534	2,529	32,738	<b>102,453</b>	<b>2,579</b>	<b>105,032</b>
	Cleared	13	9	1	43	912	11,445	901	1,102	940	163	6,330	3,337	2,440	21,857	<b>49,493</b>	<b>2,574</b>	<b>52,067</b>
	% Cleared	54.2	100.0	100.0	60.6	79.6	82.4	34.8	13.2	11.0	17.0	24.3	60.3	96.5	66.8	<b>48.3</b>	<b>99.8</b>	<b>49.6</b>

\* Cleared cases may include offences reported prior to 2002.

\*\* Include motor cycle and snow vehicle and all attempts.

†Statistics do not include Criminal Code 'Fail to Remain' offences.

## Traffic and Other Offences Reported - by Division

	Criminal Code Traffic						Other Offences							
	Dangerous Driving	Drive While Impaired	Refuse Breath/Blood/Screen	Over 80 mg	Drive while Disqualified	Total➔	C.D.S.A*	Other Federal Statutes	Liquor Licence Act - Drunk	Liquor Licence Act - Other	Other Provincial Statutes	Municipal By-Laws➡	Total†	Highway Traffic Act⚡
11 Division	25	70	24	107	9	235	319	134	258	108	556	974	2,349	12,357
12 Division	40	84	26	109	9	268	516	109	76	91	638	533	1,963	18,418
13 Division	23	59	8	56	6	152	530	93	59	100	375	577	1,734	14,429
14 Division	48	110	36	145	11	350	1,286	67	410	1,124	1,936	1,155	5,978	14,837
51 Division	46	54	9	86	5	200	1,629	43	635	583	1,387	730	5,007	9,264
52 Division	39	76	18	117	7	257	1,132	91	558	1,431	2,917	2,358	8,487	13,900
53 Division	15	33	7	40	3	98	164	11	61	89	335	609	1,269	10,106
54 Division	30	64	10	83	10	197	231	13	88	98	474	543	1,447	12,717
55 Division	23	70	16	90	11	210	359	25	253	280	526	623	2,066	13,028
<i>Central Field Command</i>	<b>289</b>	<b>620</b>	<b>154</b>	<b>833</b>	<b>71</b>	<b>1,967</b>	<b>6,166</b>	<b>586</b>	<b>2,398</b>	<b>3,904</b>	<b>9,144</b>	<b>8,102</b>	<b>30,300</b>	<b>119,056</b>
22 Division	52	165	37	184	11	449	279	68	174	172	607	419	1,719	22,176
23 Division	50	95	19	105	20	289	358	47	142	248	884	496	2,175	35,863
31 Division	65	131	20	147	13	376	789	93	119	326	1,078	677	3,082	30,394
32 Division	51	87	28	107	4	277	273	40	105	110	1,043	2,068	3,639	18,435
33 Division	37	60	14	71	5	187	197	20	29	64	323	543	1,176	21,757
41 Division	91	204	40	211	7	553	442	55	194	279	1,035	852	2,857	23,636
42 Division	75	160	29	168	16	448	692	41	130	597	1,273	156	2,889	20,209
<i>Area Field Command</i>	<b>421</b>	<b>902</b>	<b>187</b>	<b>993</b>	<b>76</b>	<b>2,579</b>	<b>3,030</b>	<b>364</b>	<b>893</b>	<b>1,796</b>	<b>6,243</b>	<b>5,211</b>	<b>17,537</b>	<b>172,470</b>
<b>Toronto</b>	<b>710</b>	<b>1,522</b>	<b>341</b>	<b>1,826</b>	<b>147</b>	<b>4,546</b>	<b>9,196</b>	<b>950</b>	<b>3,291</b>	<b>5,700</b>	<b>15,387</b>	<b>13,313</b>	<b>47,837</b>	<b>291,526</b>

\* Includes Controlled Drugs and Substances Act.

† Excluding Highway Traffic Act.

➔ Excluding Criminal Code 'Fail to Remain' offences.

⚡ Reflects the total Highway Traffic Act charges issued by divisional personnel.

The Total of the H.T.A. charges issued by divisional, traffic and other personnel was 344,383.

➡ Reflects the total Bylaw charges issued by divisional personnel. The total of the Bylaw charges issued by all units was 14,057.



# Criminal Code Offences - Persons Charged

TPS 2002 Statistical Report

	First Degree Murder	Second Degree Murder	Manslaughter	Attempted Murder	Sexual Assault	Other Assault	Robbery	Break and Enter	Theft of Motor Vehicle	Theft Over \$5,000	Theft Under \$5,000	Fraud	Offensive Weapons Offences	Other Criminal Code	Total Criminal Code Non-Traffic	Total Criminal Code Traffic	Total Criminal Code
--	---------------------	----------------------	--------------	------------------	----------------	---------------	---------	-----------------	------------------------	--------------------	---------------------	-------	----------------------------	---------------------	---------------------------------	-----------------------------	---------------------

Young Offenders	Male	0	1	0	15	123	1,118	444	355	203	14	781	37	268	1,989	5,348	14	5,362
	Female	0	1	0	0	7	469	42	37	40	1	553	31	18	485	1,684	2	1,686
	Total	0	2	0	15	130	1,587	486	392	243	15	1,334	68	286	2,474	7,032	16	7,048

Adults	Male	30	19	1	63	740	9,668	577	879	324	78	4,184	942	763	11,735	30,003	2,086	32,089
	Female	1	2	1	4	10	2,204	66	76	33	30	2,223	466	78	2,818	8,012	233	8,245
	Total	31	21	2	67	750	11,872	643	955	357	108	6,407	1,408	841	14,553	38,015	2,319	40,334

Toronto	31	23	2	82	880	13,459	1,129	1,347	600	123	7,741	1,476	1,127	17,027	45,047	2,335	47,382
---------	----	----	---	----	-----	--------	-------	-------	-----	-----	-------	-------	-------	--------	--------	-------	--------

		Criminal Code Traffic						Other Offences				
		Fail to Remain	Dangerous Driving	Drive While Impaired	Refuse Breath/Blood/Screen	Over 80 mg	Drive while Disqualified	Total	C.D.S.A*	Other Federal Statutes	Other Provincial Statutes	Total**
Young Offenders	Male	3	8	3	0	0	0	14	366	12	152	530
	Female	0	2	0	0	0	0	2	49	3	177	229
	Total	3	10	3	0	0	0	16	415	15	329	759
Adults	Male	131	175	1,057	101	585	37	2,086	2,413	760	2,536	5,709
	Female	18	9	127	14	63	2	233	353	139	1,960	2,452
	Total	149	184	1,184	115	648	39	2,319	2,766	899	4,496	8,161
Toronto		152	194	1,187	115	648	39	2,335	3,181	914	4,825	8,920

\* Controlled Drugs and Substances Act.

\*\* Excluding Highway Traffic Act, Municipal Bylaws and Liquor Licence Acts.

# Persons charged by unit⊗

TPS 2002 Statistical Report

Unit	Homicide	Attempted Murder	Sexual Assault	Other Assault	Robbery	Break and Enter	Motor Vehicle Theft*	Theft (All other)	Fraud	Offensive Weapons Offences	Other Criminal Code	Criminal Code Traffic	C.D.S.A.	Other Offences**	Total charged
D11	0	2	39	533	30	60	15	237	45	27	754	115	133	487	<b>2,477</b>
D12	1	5	51	785	46	64	25	287	75	86	916	137	154	312	<b>2,944</b>
D13	1	4	34	573	33	68	22	140	32	44	667	64	165	358	<b>2,205</b>
D14	2	4	79	1,138	83	126	32	480	77	95	1,538	152	392	583	<b>4,781</b>
D22	0	2	35	696	51	94	54	454	75	45	919	171	85	313	<b>2,994</b>
D23	3	3	45	786	73	50	32	585	80	58	882	119	170	240	<b>3,126</b>
D31	1	5	72	1,235	97	87	61	349	81	103	1,156	180	313	438	<b>4,178</b>
D32	0	8	46	812	63	69	22	829	117	73	756	137	47	297	<b>3,276</b>
D33	1	0	36	569	44	60	23	462	73	52	532	67	71	163	<b>2,153</b>
D41	4	10	110	1,252	116	125	77	977	139	81	1,318	235	66	445	<b>4,955</b>
D42	2	16	88	1,361	136	148	94	485	72	122	1,450	199	237	497	<b>4,907</b>
D51	2	5	34	669	54	59	31	190	38	63	1,602	53	578	336	<b>3,714</b>
D52	1	4	66	1,083	81	115	15	1,533	217	97	1,751	89	277	392	<b>5,721</b>
D53	0	1	24	281	44	32	16	190	50	21	331	50	69	158	<b>1,267</b>
D54	1	3	49	743	43	59	29	151	41	39	677	85	27	264	<b>2,211</b>
D55	5	4	41	820	67	115	30	468	54	50	853	95	101	286	<b>2,989</b>
SQUADS→	30	2	23	29	42	3	0	14	182	22	381	1	207	11	<b>947</b>
INT	1	1	1	3	1	0	1	0	0	4	21	1	1	2	<b>37</b>
SIS	0	0	2	4	4	0	6	0	9	26	69	0	21	55	<b>196</b>
TSV	0	0	0	19	2	2	5	6	7	5	104	367	12	23	<b>552</b>
OTHER	1	3	5	68	19	11	10	27	12	14	350	18	55	79	<b>672</b>
<b>Toronto</b>	<b>56</b>	<b>82</b>	<b>880</b>	<b>13,459</b>	<b>1,129</b>	<b>1,347</b>	<b>600</b>	<b>7,864</b>	<b>1,476</b>	<b>1,127</b>	<b>17,027</b>	<b>2,335</b>	<b>3,181</b>	<b>5,739</b>	<b>56,302</b>

\* Includes attempt thefts

\*\* Includes federal statutes other than drug acts, and other provincial statutes. Excludes Municipal Bylaws and Liquor Control Acts.

⊗ Unit of the arresting officer

→ Homicide, Fraud, Hold-up, Sexual Assault and Toronto Drug Squads

INT - Intelligent Services, SIS - Special Investigative Services, TSV - Traffic Services

## *Acknowledgement*

### **Managing Editor**

Staff Inspector Peter Sloly  
Corporate Communications

### **Editor**

Lisa Hunt  
Corporate Communications

### **Crime Information Co-ordinator**

Maureen Connolly, Crime Information Unit

### **Statistical Report Research/Validation**

Karottu George, Analyst, Crime Information Unit

### **Statistical Report Layout/Design**

Karottu George, Analyst, Crime Information Unit  
Lee George, Video Services  
John Angus, Corporate Communications (Internet Version Layout/Design)

### **Printing and Production**

City of Toronto Corporate Reproduction Services

*A special thanks to all contributors, especially ITS for their unfailing support.*

*Reproduction in whole or in part is permitted subject to the requirement that it is not for monetary gain; reproduced material remains in context; and the source is acknowledged on all copies as follows: Toronto Police Service 2002 Statistical Report, along with date and page references.*

Visit our Website at: ***www.TorontoPolice.on.ca***

You may reach us by E-mail at:

***CorporateCommunications@TorontoPolice.on.ca***