

# TORONTO POLICE SERVICE



**Annual Statistical Report, 2003**

## *Table of Contents*

Introduction	i - ii
Uniform Strength, Expenditures & Distribution	1
Budget Information	1
Police Personnel by Rank and Classification	2
Police Personnel by Division and Field Command	3
Fleet Information	4
Calls for Service, AT&T Language Line Service	5
Public Complaints	6
Community policing & Miscellaneous Information	7-8
General Data by Division and Field Command	9
Traffic Collisions	10-11
 <b><u>General Crime Information</u></b>	
Criminal Code Offences - Highlights	12-14
Criminal Code Offences by Category	15-16
Selected Offences Against Victims by Age and Sex	17
Persons Charged by Age and Sex	18-19
Violent Crime Statistics	20
Selected Offences Against Police Officers	21
Total Incidents Reported to Statistics Canada	21
 <b><u>Criminal Code Offences Reported and Cleared</u></b>	
Field Command and Toronto Totals	22
By Division and Field Command	23-26
 <b><u>Traffic and Other Offences</u></b>	
 <b><u>Persons Charged</u></b>	
Criminal Code Offences	28
Traffic and Other Offences	29
By Case Unit	30

## ***INTRODUCTION***

The Toronto Police Service publishes crime statistics based upon the number of reported offences whereas Statistics Canada publishes crime statistics based on reported incidents of crime. In offence based statistics, all offences involved in an incident are included, whereas in the incident based statistics, more than one offence may be included in one incident but only the most serious crime is included in the crime statistics. So care should be taken when comparing statistics published by both agencies.

### **Types of Offences**

**Violent Offences** are crimes involving the application or threat of application of force to a person.

**Property Offences** involve unlawful acts with respect to property but do not involve the use or threat of violence against an individual.

**Other Criminal Code** offences include the remaining non-traffic *Criminal Code* offences that are classified as neither violent nor property offences.

**C. D. S. A. Offences** involve offences under the federal Controlled Drugs and Substances Act. These offences comprise of possession, trafficking, importation or cultivation of various illicit, controlled and restricted drugs.

**Other Federal Statute** offences include violations under all other federal statutes. They may include Bankruptcy Act, Customs Act, Excise Act, Immigration Act.

**Provincial Statute** offences include all violations under provincial statutes excepting traffic related statutes. Examples are Coroner's Act, Environmental Protection Act, Mental Hospital Act and Liquor Licence Act. The majority of these offences come under Liquor Licence Act.

### **General Information**

Due to change in the interpretation of the Law, C. D. S. A. charges laid by Toronto Police Service are considerably lower in 2003.

Offences published in a particular year include offences reported to or become known to police during the year. However, offences occurred in the past can be reported in a future year. A typical example is the sexual assault category. Similarly, concluded offences include those committed during previous years.

In September 2003 the Toronto Police Service implemented a new records management system as a result statistics in this report for previous years have been recalculated. This implementation may have resulted in an undercount of 2003 data.

## Overview of Statistics, 2003

- Reported **Criminal Code Offences** *excluding traffic offences* decreased 0.3% in 2003 over the previous year.
- **Violent Crime** decreased 4.1% in 2003 from 2002.
- **Property Crime** increased 2.0% over the same period.
- **Other Criminal Code Offences** decreased by 3.4% in 2003 from 2002.
- There were 66 homicides in 2003, up 6.5% from 2002.
- There were 2,427 sexual assaults in 2003 compared to 2,722 in 2002.
- Total non-sexual assaults decreased by 6.7% in 2003 over 2002.
- Total robbery increased 14.2%.
  - Break and enters to houses decreased 10.7%; entries to apartments increased 10.9%.
- There were 14,015 motor vehicles reported stolen in 2003 compared to 13,002 in 2002.
- On the Toronto roads: There were 72 fatal collisions, down 20.9% over the past year; and resulting in 74 fatalities. There were 15,368 injury collisions and 22,317 people were injured. The total number of reportable motor vehicle collisions stood at 66,667 in 2003 compared to 71,760 in 2002, a decrease of 7.1%.
- There were 723 complaints lodged against police officers in 2003, compared to 704 in 2002.
- Number of vehicles stopped by R.I.D.E. (Reduced Impaired Driving Everywhere) decreased in 2003 by 20.6% to 135,712.
- Total calls for service through Communications Centre increased 1.9% while the total dispatched calls for service increased 5.3% in 2003 over 2002. The Service reaches out to wider sections of the community by providing service in languages other than English through the AT&T Language Line Service. In 2003 there were 3,087 calls for service received in 55 languages other than English.

# Uniform Strength and Expenditures

	1999	2000	2001	2002	2003
Population Served	2,538,191	2,565,555	2,594,205	2,618,605	2,643,842
Uniform Strength	5,111	5,149	5,028	5,119	5,295
Uniform Strength:Population	1:497	1:498	1:516	1:512	1:499
Actual Expenditures(Gross \$)	554,227,500	579,729,813	603,387,884	635,497,010	673,216,463+
Per Capita Cost*	218.36	225.97	232.59	242.69	254.64+

+ Estimate (based on projected expenditures).

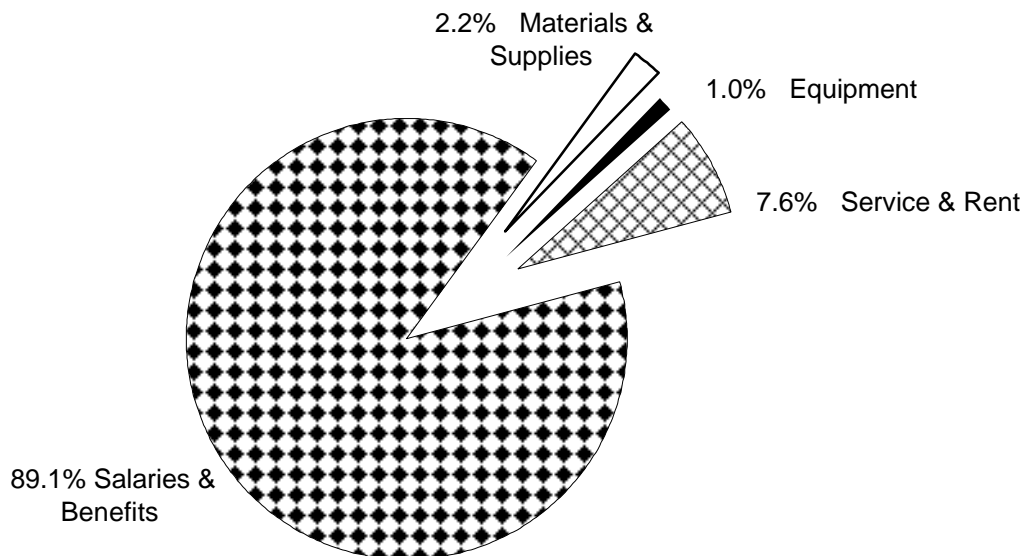
## Gross Operating Budget

Year	Budget (\$)*	Change from Previous Year (\$)	% Change from Previous Year
1999	537,911,400	15,765,600	3.02
2000	577,893,300	39,981,900	7.43
2001	600,934,100	23,040,800	3.99
2002	634,336,300	33,402,200	5.56
2003	668,997,800	34,661,500	5.46

## Gross Operating Budget

By Appropriation

By Feature



	1999	2000	2001	2002	2003
Chief	1	1	1	1	1
Deputy Chief	5	4	2	2	2
Staff Superintendent	0	0	6	6	6
Superintendent	21	21	23	22	21
Staff Inspector	29	26	23	24	25
Inspector	29	34	38	35	33
Staff Sergeant/Detective Sergeant	222	238	259	257	260
Sergeant/Detective	856	886	900	922	922
Police Constable	3,948	3,939	3,776	3,850	4,025
<b>Total Uniform Strength</b>	<b>5,111</b>	<b>5,149</b>	<b>5,028</b>	<b>5,119</b>	<b>5,295</b>
Chief Administrative Officer- Policing	0	1	1	1	1
Director	4	4	4	4	4
Parking Enforcement Officer	290	310	290	348	350
Court Officer	274	279	274	297	306
Document Server	16	16	14	15	19
Communications Operator	220	218	219	224	225
Cadets-in-Training	72	223	236	215	72
Custodial Officer	5	5	5	4	5
Other Civilians	1,241	1,219	1,219	1,194	1,056
<b>Total Civilian Strength</b>	<b>2,122</b>	<b>2,275</b>	<b>2,262</b>	<b>2,302</b>	<b>2,038</b>
<b>Grand Total</b>	<b>7,233</b>	<b>7,424</b>	<b>7,290</b>	<b>7,421</b>	<b>7,333</b>

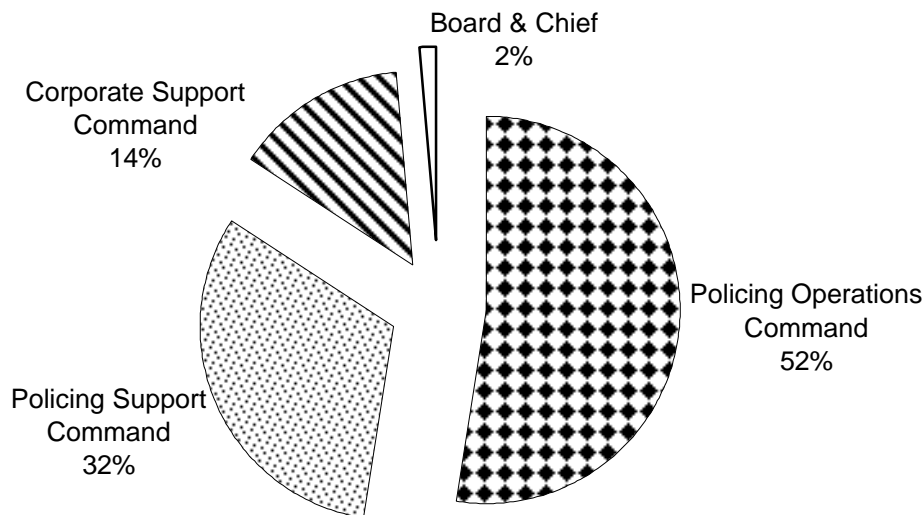
Auxiliary personnel**	496	302	535	628	570
Temporary Employee	74	92	115	177	173
School Crossing Guard	711	697	695	714	692
Part-time Court Officer	154	164	169	170	183
Part-time Employee - other	56	57	105	120	104

\* As of December 31, 2003

\*\* Includes other volunteers

☞ Includes spares

**Distribution of Personnel by Branches of the Service**



### Personnel by Division And Field Command (Actual)

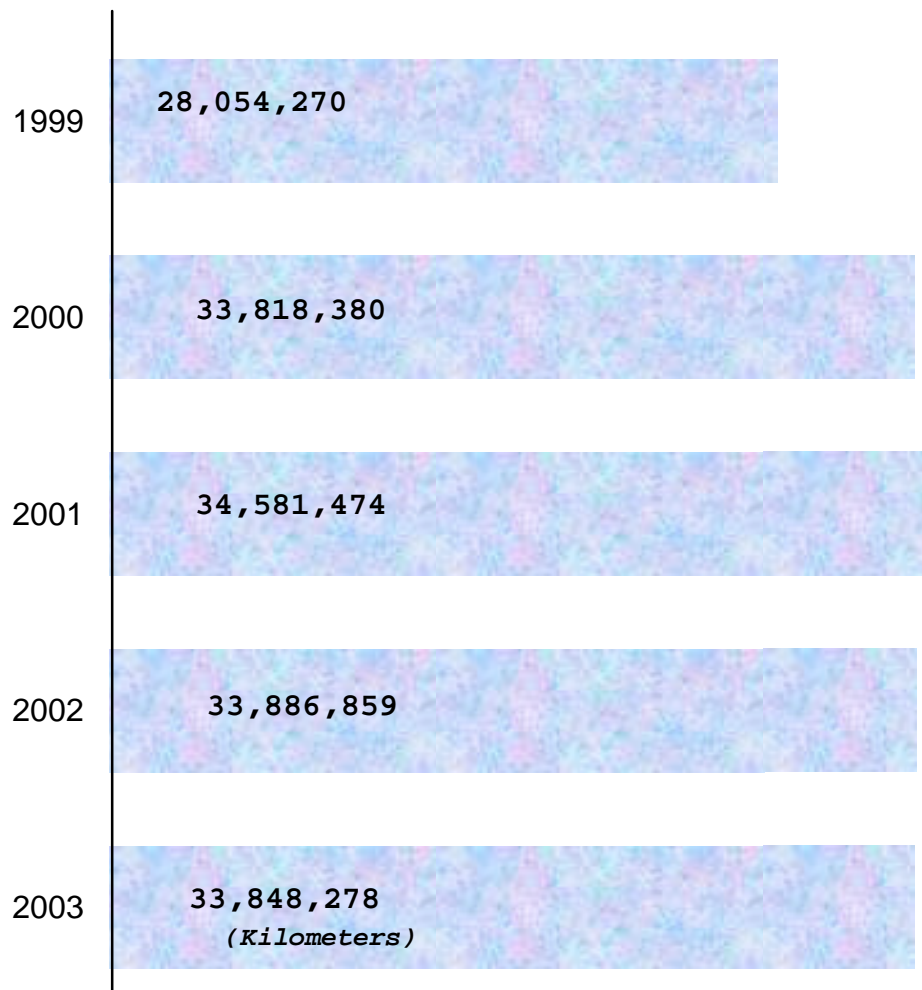
	Superintendent and Above	Staff Inspector	Inspector	Staff/Detective Sergeant	Sergeant/Detective	Police Constable	Uniform Strength	Civilian Strength	Total Strength	School Crossing Guard
CENTRAL FIELD COMMAND HQ	1	0	1	4	7	33	46	5	51	0
COP	0	1	0	3	7	22	33	6	39	0
11 Division	0	1	0	8	30	128	167	10	177	28
12 Division	1	0	1	7	33	138	180	10	190	47
13 Division	0	1	0	6	31	151	189	8	197	50
14 Division	1	0	2	9	49	255	316	16	332	48
51 Division	1	0	0	7	32	136	176	10	186	22
52 Division	1	0	2	10	52	276	341	23	364	17
53 Division	0	1	0	7	30	104	142	10	152	44
54 Division	0	1	0	8	31	142	182	10	192	46
55 Division	1	0	1	7	38	178	225	12	237	62
<b>Central Field Command*</b>	<b>6</b>	<b>5</b>	<b>7</b>	<b>76</b>	<b>340</b>	<b>1,563</b>	<b>1,997</b>	<b>120</b>	<b>2,117</b>	<b>364</b>
AREA FIELD COMMAND HQ	1	0	1	3	4	27	36	11	47	0
22 Division	1	0	1	7	32	172	213	12	225	62
23 Division	1	0	0	7	29	168	205	11	216	44
31 Division	1	0	1	7	34	240	283	13	296	35
32 Division	1	0	1	7	32	199	240	11	251	46
33 Division	0	1	0	7	31	145	184	10	194	36
41 Division	1	0	1	8	42	268	320	13	333	48
42 Division	1	0	1	7	40	262	311	14	325	53
<b>Area Field Command*</b>	<b>7</b>	<b>1</b>	<b>6</b>	<b>53</b>	<b>244</b>	<b>1481</b>	<b>1792</b>	<b>95</b>	<b>1887</b>	<b>324</b>
POC	1	0	0	0	0	0	1	2	3	0
<b>Grand Total</b>	<b>14</b>	<b>6</b>	<b>13</b>	<b>129</b>	<b>584</b>	<b>3,044</b>	<b>3,790</b>	<b>217</b>	<b>4,007</b>	<b>688</b>

\* Includes those assigned to Field Command Headquarters.

Does not include temporary and part-time civilian members.

	<b>1999</b>	<b>2000</b>	<b>2001</b>	<b>2002</b>	<b>2003</b>
Cars	1,191	1,193	1,228	1,231	1,315
Motorcycles	130	133	138	137	108
Other	139	149	145	141	92
<b>Total Vehicles</b>	<b>1,460</b>	<b>1,475</b>	<b>1,511</b>	<b>1,509</b>	<b>1,515</b>
Boats	19	19	19	19	24
Horses	23	25	25	26	29

**Total Kilometers driven by Police Vehicles**





# Classification of Incoming Calls

TPS 2003 Statistical Report

Year	Calls Received at Communications Centre			Dispatched Calls	Other Calls**
	Emergency*	Non-Emergency☐	Total		
1999	900,717	876,407	1,777,124	801,746	975,378
2000	973,249	849,191	1,822,440	837,219	985,221
2001	983,343	886,119	1,869,462	864,095	1,005,367
2002	1,036,355	883,843	1,920,198	880,271	1,039,927
2003	1,052,464	904,530	1,956,994	926,697	1,030,297

\* 9-1-1 Emergency Calls

\*\* Advised, transferred, or no action taken.

☐ Includes Non-emergency calls, Alarms, Parking Complaints, TTC, RIDE program, and other calls which include Administration, Internal etc.

## AT&T Language Line Service(Calls made in languages other than English)

Number of Calls and top 10 ranks in 1999-2003\*

Language	1999	2000	2001	2002	2003
Chinese	877(1)	874(1)	854(1)	1,076(1)	1166(1)
Spanish	236(3)	251(2)	353(2)	441(2)	460(2)
Vietnamese	145(4)	162(3)	244(3)	197(3)	180(3)
Italian	274(2)	145(5)	128(6)	190(4)	151(5)
Portuguese	126(5)	151(4)	146(5)	129(7)	156(4)
Tamil	107(8)	141(6)	167(4)	138(5)	120(7)
Korean	110(7)	121(8)	128(6)	128(8)	138(6)
Russian	103(9)	122(7)	94(9)	117(9)	100(8)
French	114(6)	120(9)	102(8)	132(6)	98(9)
Polish	102(10)	86(10)	106(7)	84(10)	91(10)
Punjabi	90	73	57	64	60
Farsi	63	32	44	47	60
Greek	37	24	21	37	30
Hungarian	58	40	59(10)	50	35
Arabic	42	13	34	13	20
Somali	21	27	13	17	25
Japanese	12	40	20	7	18
Hindi	18	31	15	22	22
Urdu	9	12	13	19	30
Turkish	9	8	18	37	16
German	12	2	0	10	5
Croatian	6	9	1	8	5
<b>Total**</b>	<b>2,664</b>	<b>2,578</b>	<b>2,712</b>	<b>3,081</b>	<b>3,087</b>

\* Top Ten ranking shown in bracket

\*\* Including other non-English languages

*In the year 2003, 3,087 calls were made in 55 languages other than English.*

# Public Complaints\*

TPS 2003 Statistical Report

<b>Complaints Received</b>	<b>1999</b>	<b>2000</b>	<b>2001</b>	<b>2002</b>	<b>2003</b>
Conduct - Less Serious	408	479	405	517.5	577.5
Conduct - Serious	205	252	140	167	129
Policy	9	12	1	4.5	2.5
Services	7	34	12	15	14
<b>Total Complaints Received</b>	<b>629</b>	<b>819*</b>	<b>742**</b>	<b>704.0</b>	<b>723.0</b>

\* Includes 35 complaints with no specific allegation, and 7 other complaints

\*\* Includes 184 complaints which did not meet criteria

<b>Dispositions</b>	<b>1999</b>	<b>2000</b>	<b>2001</b>	<b>2002</b>	<b>2003</b>
Frivolous	27	56	125	117.5	100
Informal Resolution	82	146	134	106	93
Made in Bad Faith	13	18	20	24.5	18
Misconduct Identified/Hearing	2	1	1	0	4
No Further Action/Final Report	175	180	171	144	222
Non Jurisdictional/Other	10	39*	18	16	32
Not Directly Affected	27	29	16	19.5	36
Over Six Months	39	32	47	24	27
Unit Commander's Attention/Personnel Documentation	5	14	16	10.5	6
Vexatious	0	2	0	4	7
Withdrawn	132	183	194	130	112
<b>Total Dispositions</b>	<b>512</b>	<b>700</b>	<b>742</b>	<b>596.0**</b>	<b>657**</b>

\*Includes multiple jurisdiction(more than one police service), Non-jurisdictional complaints(subject officer retired or resigned)

and complaints not signed by complainants.

\*\*Total does not include outstanding complaints.

<b>Category of Allegations*</b>	<b>2000</b>	<b>2001</b>	<b>2002</b>	<b>2003</b>
Discreditable Conduct	731	670	501	531
Insubordination	9	7	7	8
Neglect of duty	294	252	195	171
Deceit	15	14	11	4
Breach of Confidence	1	8	7	3
Corrupt practice	10	18	26	11
Unlawful or Unnecessary exercise of authority	299	324	287	258
Damage to clothing or equipment	1	0	0	0
Consuming drug or alcohol in a manner prejudicial to duty	3	0	0	0
<b>Total Allegations</b>	<b>1363**</b>	<b>1293</b>	<b>1034</b>	<b>986</b>

\*Categorization is different from previous years; refer to 1999 Report for previous years' figures

\*\*Total incorporates complaints where there are multiple allegations.

## Community Based and Miscellaneous Policing Statistics

### Community Information/ Crime Prevention - Community Relations

	1999	2000	2001	2002	2003
Communities involved in Neighbourhood Watch	742	772	758	772	1,064
Homes involved in Neighbourhood Watch	392,528	408,406	399,067	408,406	381,702
Crime Prevention Presentations	1,916	1,880	1,702	1,437	1,761
Community Relations Presentations	4,898	4,369	2,383	2,096	10,907*
Substance Abuse/Safety Presentations	1,106	1,115	1,113	1,371	4,027*

\*Includes school lectures, substance abuse and safety presentations conducted by Community School Liaison Officers to school children.

### Intelligence Services

Hate/Bias Crime Occurrences	292	204	338	219	149
-----------------------------	-----	-----	-----	-----	-----

### R.I.D.E.(Reduced Impaired Driving Every where) Year Round Statistics - Traffic Services

Vehicles Stopped	116,517	115,112	154,536	170,891	135,712
Charges Laid	144	198	257	244	231

### Alarm Program - Communications Support

Valid Alarms	1,084	885	1,000	1,059	1,136
False Alarms	27,911	27,704	26,883	29,042	29,956

### Victim Services

Total Incidents	5,553	7,175	5,958	7,523	8,324
Telephone Assisted	5,175	6,846	5,674	7,205	7,788
On Scene	378	638	284	318	536
Domestic Related	3,440	4,807	3,932	4,779	3,422

### Other Programs - Industrial Liaison

Labour disputes attended	35	37	53	36	28
Potential dispute contacts	29	10	20	16	14

### Volunteer Resources (Hours Volunteered)

	43,893	48,236	51,255	45,000	85,000
--	--------	--------	--------	--------	--------

### Crime Stoppers\*

Arrests	388	323	273	191	216
Charges Laid	1,230	694	889	530	703

\* Toronto statistics only

See next page

**Community Relations/Community Liaison/Miscellaneous**

Type of Presentation	Number of Presentations	Persons Attending
Speaking engagements - Letter	169	5,691
School Lectures	8,661	201,256
Lectures to Reliefs/Platoons	178	2,378
Speaking Engagements - Other	367	14,849
Community Meeting Attended	1,360	18,862
Station Tours	172	3,102
<b>Sub-Total</b>	<b>10,907</b>	<b>246,138</b>
Media Relations(Radio, TV, Newspaper, Other Publications)*	195	17,573,745
Major Cultural Events- Co-ordinated/Assisted	155	4,931,148
External Presentation	174	19,352
Internal Presentation/Lectures	16	273
External Meeting/Lectures	484	7,459
Internal Meeting	422	2,153
Divisional Assistance/Support Lectures	1,472	4,054
Conference/Seminars	30	6,147
Other Duties	940	N/A
<b>Grand Total</b>	<b>3,888</b>	<b>22,544,331</b>

\*The figure 17,573,745 includes audience/readership of TV, Radio, News Papers and other Publications

Substance Abuse/Safety Presentations	Count
Streetproofing	1,814
Alcohol and Drugs	1,222
Law	991
Sexual Abuse	91
Abuse of elderly	75
Family violence	96
<b>Total</b>	<b>4,289</b>

**Crime Prevention**

Type of Presentation	Number of Presentations	Persons Attending
Neighbourhood Watch	151	4,721
Home security/High-rise security	283	5,440
Office security	150	2,877
Personal safety	394	13,273
Senior citizen safety	130	4,490
Victims of crime	236	961
Other	417	27,112
<b>Total</b>	<b>1,761</b>	<b>58,874</b>
Communities involved in Neighbourhood Watch		1,064
Homes involved in Neighbourhood Watch		381,702
Banks and Business premises visited		1,544
Serious break and enter call-backs		983
Crime prevention pamphlets distributed		58,582
Community Safety Audit Conducted		153
Crime prevention through environmental design(CPTED Audits) conducted		64

## General Data by Division and Field Command

TPS 2003 Statistical Report

	Estimated Population	Area (sqkm)	Estimated Gross Expenditures(\$)	Dispatched calls	Motor Vehicles		Bicycles
					Stolen	Recovered	Stolen
11 Division	104,024	15.9	13,293,833	29,089	330	209	263
12 Division	97,286	18.5	14,253,363	34,074	407	294	132
13 Division	146,084	19.2	14,593,525	38,320	443	317	155
14 Division	155,312	15.7	25,921,964	54,371	695	451	629
51 Division	68,488	11.4	14,965,441	33,803	271	208	236
52 Division	77,423	12.4	29,419,875	59,188	436	304	836
53 Division	144,553	26.0	11,614,515	27,044	409	259	211
54 Division	138,157	20.4	14,356,537	36,151	370	295	266
55 Division	122,560	17.0	18,142,131	37,331	445	349	417
<b>Central Command</b>	<b>1,053,887</b>	<b>156.5</b>	<b>156,561,184</b>	<b>349,371</b>	<b>3,806</b>	<b>2,686</b>	<b>3,145</b>
22 Division	198,091	66.9	17,069,900	51,078	928	719	316
23 Division	166,238	56.6	16,466,264	36,822	1,259	881	148
31 Division	201,863	47.7	21,779,590	52,325	1,265	914	181
32 Division	208,203	62.6	18,758,257	47,377	935	634	223
33 Division	196,046	53.0	14,431,724	34,939	626	515	129
41 Division	239,263	60.1	24,689,183	61,312	1,393	1,136	244
42 Division	380,251	127.2	25,043,867	62,455	1,699	1,413	247
<b>Area Command</b>	<b>1,589,955</b>	<b>474.1</b>	<b>138,238,785</b>	<b>346,308</b>	<b>8,105</b>	<b>6,212</b>	<b>1,488</b>
<b>Toronto</b>	<b>2,643,842</b>	<b>630.6</b>	<b>294,799,969†</b>	<b>926,697††</b>	<b>11,911</b>	<b>8,898</b>	<b>4709**</b>

\* Does not include the value of motor vehicles and bicycles, but includes frauds.

†† Includes 107,131 CARU calls, 105,342 Tag Agency Dispatched Events, 2,376 Marine Unit Events and 16,169 other front line calls.

† Includes Division totals only.

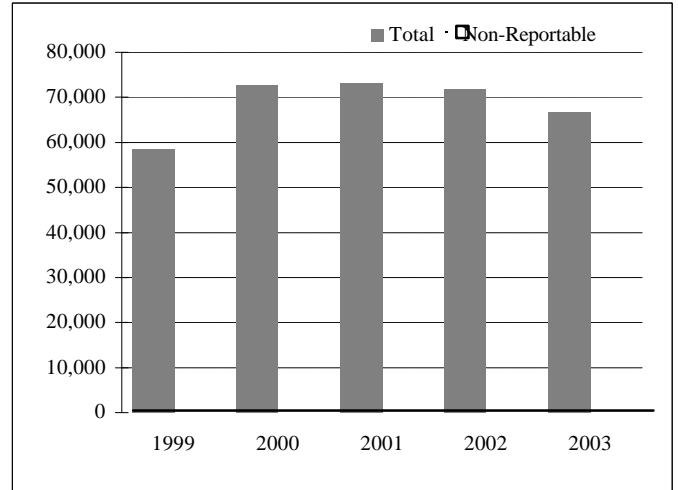
The grand total of the estimated gross expenditure of the Service was \$673,216,463

\*\* Including 76 bicycles stolen from undetermined locations.

Source for all figures: Toronto Traffic Data Centre and Safety Bureau

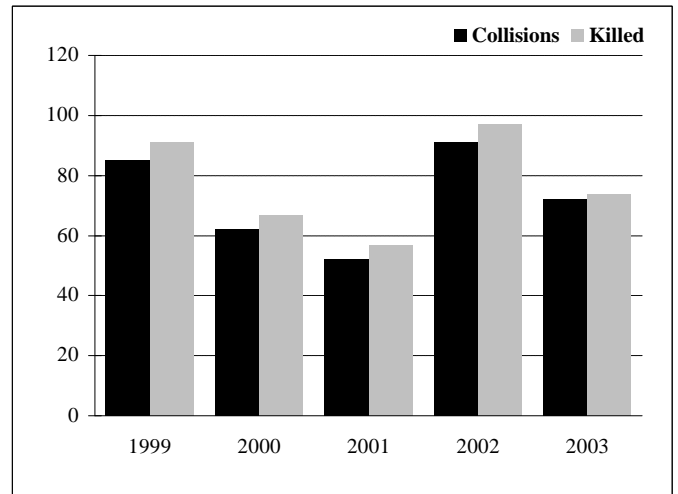
**Total Collisions (Excludes Non-Reportable Collisions)**

Year	Total	% Change	Non-Reportable
1999	58,450	-11.2	N/A
2000	72,540	24.1	N/A
2001	73,174	0.9	N/A
2002	71,760	-1.9	N/A
<b>2003</b>	<b>66,667</b>	<b>-7.1</b>	<b>N/A</b>



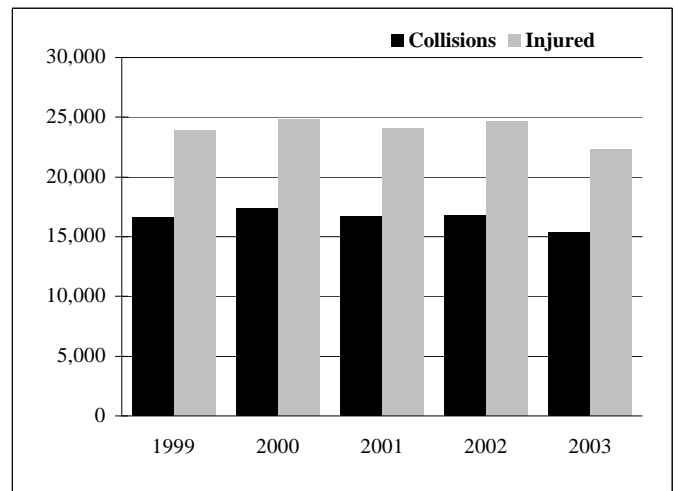
**Fatal Collisions and Persons Killed**

Year	Collisions	% Change	Killed
1999	85	2.4	91
2000	62	-27.1	67
2001	52	-16.1	57
2002	91	75.0	97
<b>2003</b>	<b>72</b>	<b>-20.9</b>	<b>74</b>



**Injury Collisions and Persons Injured**

Year	Collisions	% Change	Injured
1999	16,662	-7.3	23,895
2000	17,404	4.5	24,867
2001	16,722	-3.9	24,103
2002	16,839	0.7	24,636
<b>2003</b>	<b>15,368</b>	<b>-8.7</b>	<b>22,317</b>

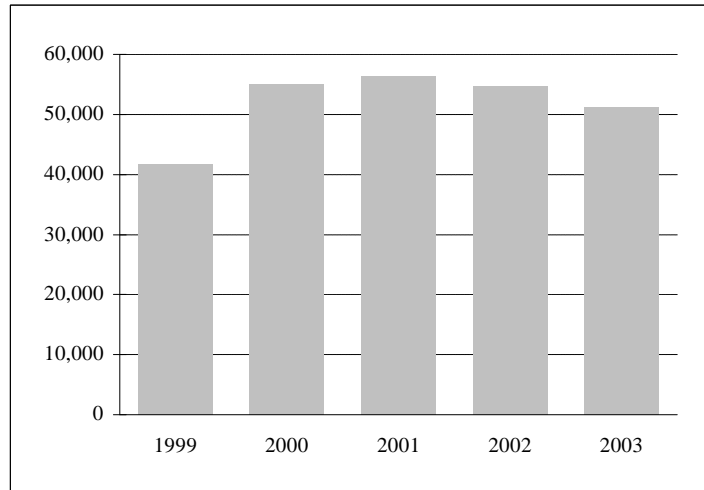


General Note: 2003 statistics are unofficial as Toronto Traffic Data Centre and Safety Bureau has not yet officially released them as of press time. However, any variances to these figures will be minimal.

Source for all figures: Toronto Traffic Data Centre and Safety Bureau

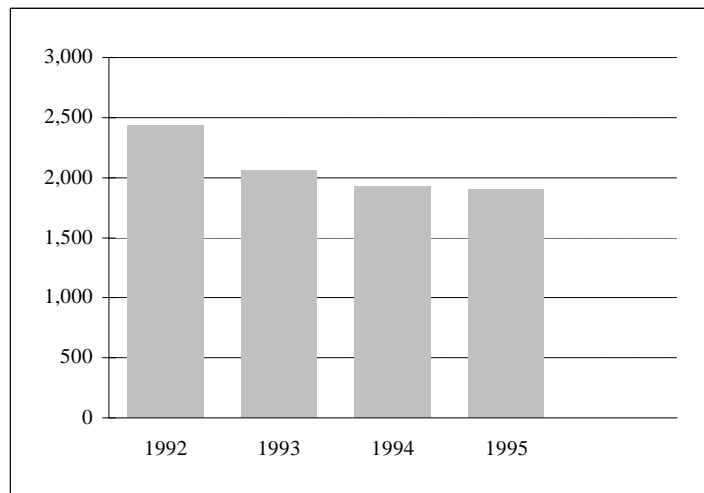
**Property Damage Collisions**

Year	Collisions	% Change
1999	41,703	-12.7
2000	55,076	32.1
2001	56,399	2.4
2002	54,830	-2.8
<b>2003</b>	<b>51,227</b>	<b>-6.6</b>



**Drinking and Driving Collisions\***

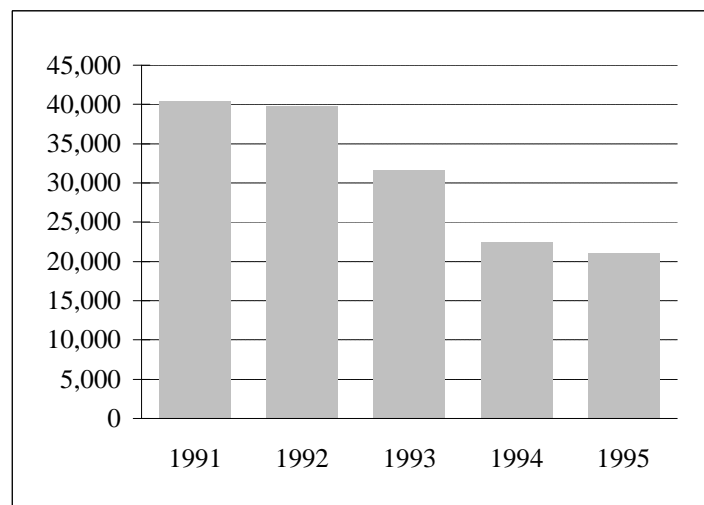
Year	Collisions	% Change
1992	2,436	-1.2
1993	2,070	-15.0
1994	1,930	-6.8
1995	1,903	-1.4



\*Due to technical reasons, these figures are not available since 1996 due to changeover to new database.

**Charges Laid in Collisions\***

Year	Charges	% Change
1991	40,471	-5.5
1992	39,715	-1.9
1993	31,625	-20.4
1994	22,431	-29.1
1995	21,037	-6.2

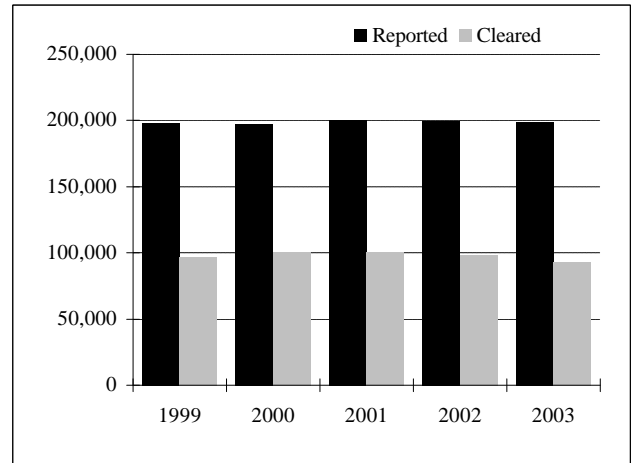


\*Includes Non-Reportable collisions. Due to technical reasons, these figures are not available since 1996 due to changeover to new database.

General Note: 2003 statistics are unofficial as Toronto Traffic Data Centre and Safety Bureau has not yet officially released them as of press time. However, any variances to these figures will be minimal.

**Total Criminal Code Offences\***

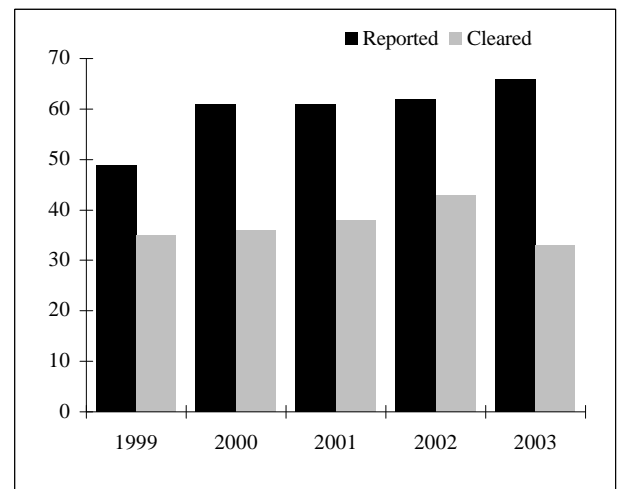
Year	Reported	% Change	Rate per 100,000 of Population	Cleared	% Cleared
1999	197,545	-5.9	7,782.9	96,808	49.0
2000	196,872	-0.3	7,673.7	100,353	51.0
2001	199,969	1.6	7,708.3	100,413	50.2
2002	199,036	-0.5	7,600.8	98,387	49.4
<b>2003</b>	<b>198,424</b>	<b>-0.3</b>	<b>7,505.1</b>	<b>93,069</b>	<b>46.9</b>



\*Excluding Criminal Code traffic offences. Statistical Reports published prior to 1997 included Criminal Code traffic offences. Figures were revised for years 1999 - 2002.

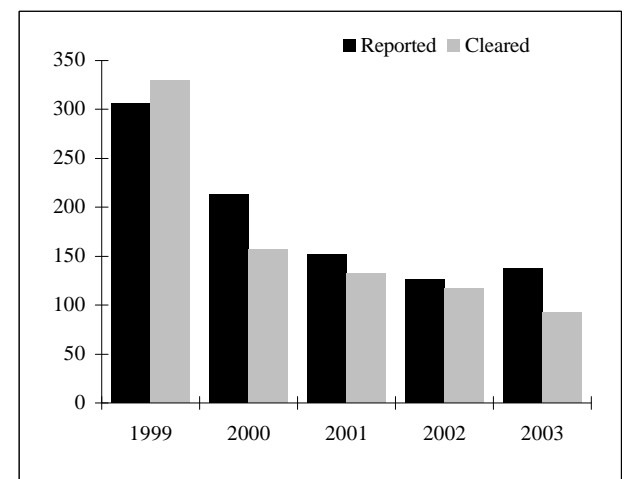
**Homicides**

Year	Reported	% Change	Rate per 100,000 of Population	Cleared	% Cleared
1999	49	-12.5	1.9	35	71.4
2000	61	24.5	2.3	36	59.0
2001	61	0.0	2.3	38	62.3
2002	62	1.6	2.3	43	69.4
<b>2003</b>	<b>66</b>	<b>6.5</b>	<b>2.5</b>	<b>33</b>	<b>50.0</b>



**Robberies (Financial Institutions only)**

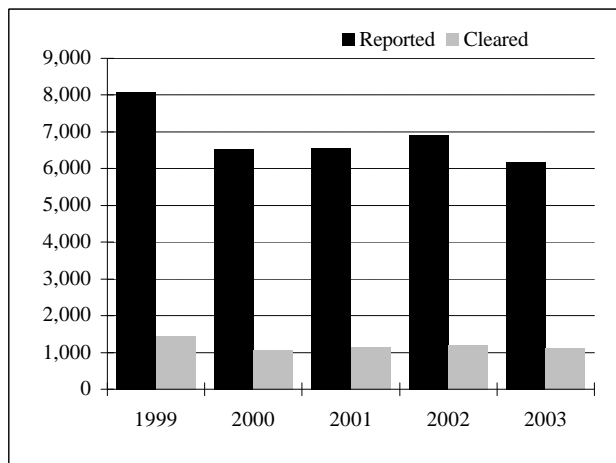
Year	Reported	% Change	Rate per 100,000 of Population	Cleared	% Cleared
1999	307	-21.3	12.1	330	107.5
2000	214	-30.3	8.3	157	73.4
2001	152	-29.0	5.9	133	87.5
2002	127	-16.4	4.9	117	92.1
<b>2003</b>	<b>138</b>	<b>8.7</b>	<b>5.2</b>	<b>93</b>	<b>67.4</b>





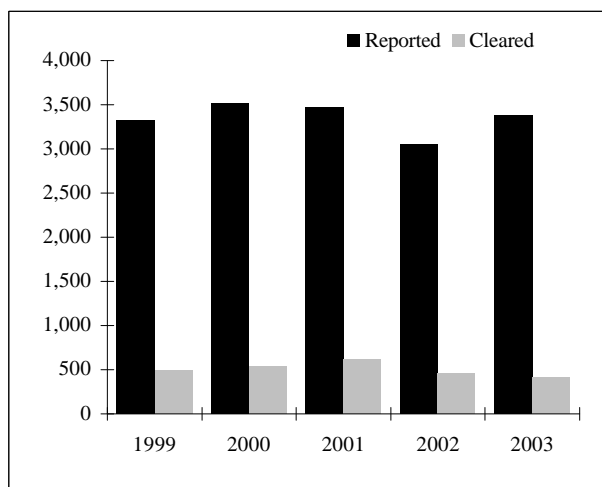
**Break and Enter - Houses**

Year	Reported	% Change	Rate per 100,000 of Population	Cleared	% Cleared
1999	8,077	-14.3	318.2	1,431	17.7
2000	6,536	-19.1	254.8	1,042	15.9
2001	6,571	0.5	253.3	1,149	17.5
2002	6,905	5.1	263.7	1,193	17.3
<b>2003</b>	<b>6,164</b>	<b>-10.7</b>	<b>233.1</b>	<b>1,119</b>	<b>18.2</b>



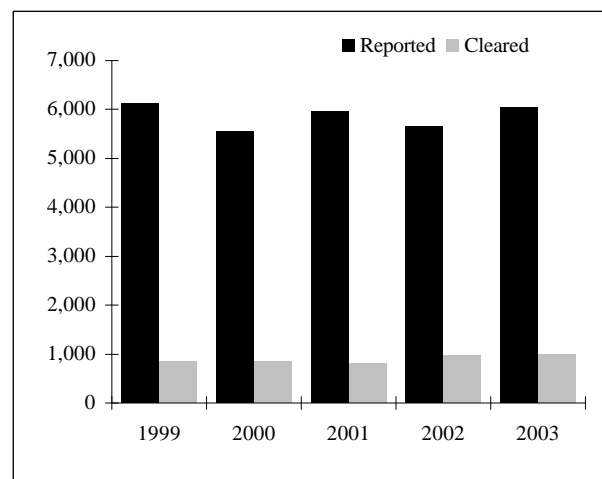
**Break and Enter - Apartments**

Year	Reported	% Change	Rate per 100,000 of Population	Cleared	% Cleared
1999	3,325	-6.9	131.0	496	14.9
2000	3,521	5.9	137.2	546	15.5
2001	3,481	-1.1	134.2	624	17.9
2002	3,050	-12.4	116.5	466	15.3
<b>2003</b>	<b>3,381</b>	<b>10.9</b>	<b>127.9</b>	<b>411</b>	<b>12.2</b>



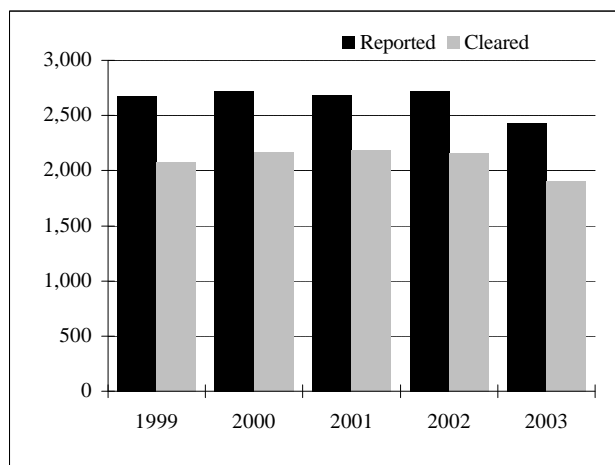
**Break and Enter - Business Premises**

Year	Reported	% Change	Rate per 100,000 of Population	Cleared	% Cleared
1999	6,140	-13.8	241.9	862	14.0
2000	5,554	-10.6	216.5	847	15.3
2001	5,968	7.5	230.1	813	13.6
2002	5,647	-5.4	215.6	974	17.2
<b>2003</b>	<b>6,059</b>	<b>7.3</b>	<b>229.2</b>	<b>996</b>	<b>16.4</b>



**Sexual Assaults\***

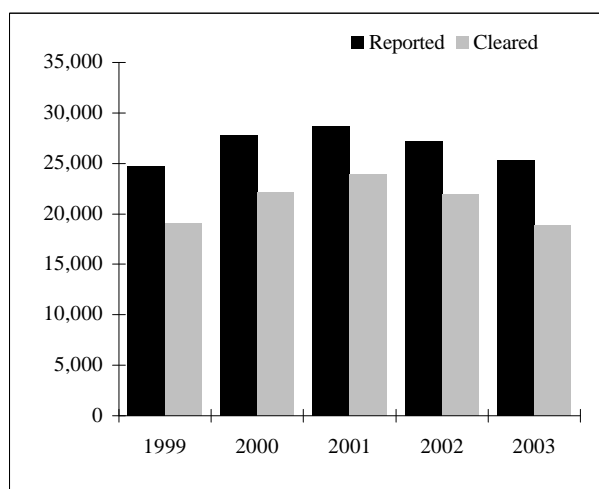
Year	Reported	% Change	Rate per 100,000 of Population	Cleared	% Cleared
1999	2,674	8.6	105.4	2,069	77.4
2000	2,714	1.5	105.8	2,163	79.7
2001	2,683	-1.1	103.4	2,188	81.6
2002	2,722	1.5	103.9	2,158	79.3
<b>2003</b>	<b>2,427</b>	<b>-10.8</b>	<b>91.8</b>	<b>1,906</b>	<b>78.5</b>



\* Includes "non-assaultive" sexual offences(e.g. Invitation to Sexual Touching; Sexual Exploitation etc.)

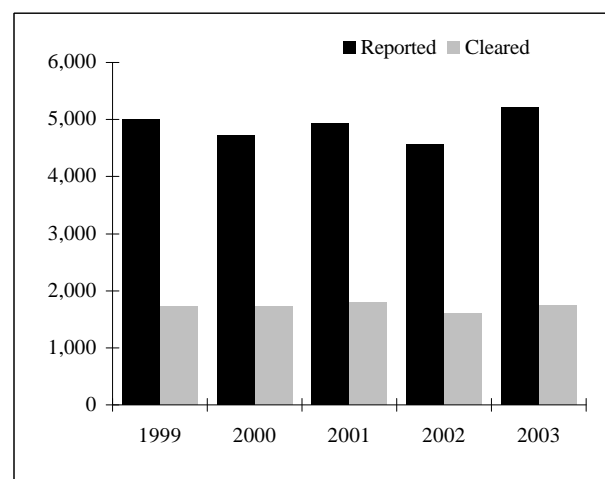
**Non-Sexual Assaults**

Year	Reported	% Change	Rate per 100,000 of Population	Cleared	% Cleared
1999	24,755	-2.9	975.3	19,071	77.0
2000	27,812	12.3	1,084.1	22,123	79.5
2001	28,712	3.2	1,106.8	23,947	83.4
2002	27,200	-5.3	1,038.7	21,978	80.8
<b>2003</b>	<b>25,379</b>	<b>-6.7</b>	<b>959.9</b>	<b>18,912</b>	<b>74.5</b>



**Robberies (Including financial institution)**

Year	Reported	% Change	Rate per 100,000 of Population	Cleared	% Cleared
1999	5,013	-4.3	197.5	1,740	34.7
2000	4,728	-5.7	184.3	1,734	36.7
2001	4,936	4.4	190.3	1,802	36.5
2002	4,578	-7.3	174.8	1,602	35.0
<b>2003</b>	<b>5,228</b>	<b>14.2</b>	<b>197.7</b>	<b>1,749</b>	<b>33.5</b>



## VIOLENT CRIME, PROPERTY CRIME, OTHER CRIME AND CRIMINAL CODE TRAFFIC OFFENCES

YEAR	VIOLENT CRIME(1)			PROPERTY** CRIME(2)			OTHER** CRIME(3)			C. C. TRAFFIC OFFENCES(4)			TOTAL C. C. OFFENCES(5)		
	OFFENCE	CHANGE %	CLEAR* %	OFFENCE	CHANGE %	CLEAR* %	OFFENCE	CHANGE %	CLEAR* %	OFFENCE	CHANGE %	CLEAR* %	OFFENCE	CHANGE %	CLEAR* %
1999	33,066	-2.2	70.7	122,894	-9.5	31.4	41,585	3.3	83.8	3,812	5.0	99.3	201,357	-5.7	50.0
2000	35,916	8.6	73.9	114,753	-6.6	30.4	46,203	11.1	84.3	4,096	7.5	99.6	200,968	-0.2	52.0
2001	37,038	3.1	76.9	116,953	1.9	27.9	45,978	-0.5	85.4	4,786	16.8	99.5	204,755	1.9	51.4
2002	35,152	-5.1	74.7	117,647	0.6	28.1	46,237	0.6	84.5	4,593	-4.0	99.6	203,629	-0.5	50.6
2003	33,717	-4.1	68.5	120,034	2.0	28.2	44,673	-3.4	80.9	4,349	-5.3	97.7	202,773	-0.4	48.0

\* Clearance rate

\*\* 'Mischief' is included in the 'Property Crime' this year where as it was included in the 'Other Crime' in Reports of previous years.

**Categories of Crime:**

- (1) **Violent crime** includes homicide and homicide related offences, sexual assaults, sexual offences, non-sexual assaults, abduction, and robberies.
- (2) **Property crime** includes break and enter, all types of thefts, possession of stolen goods, fraud and mischief.
- (3) **Other crime** includes all other non-traffic Criminal Code offences not covered in categories (1) and (2).
- (4) **C. C. Traffic offences** include all Criminal Code traffic offences excluding criminal code 'Fail to Remain' traffic offences.
- (5) **Total C. C. offences** include all the above four categories. Only Criminal Code offences are shown.

UNIT	VIOLENT CRIME(1)			PROPERTY* CRIME(2)			OTHER* CRIME(3)			C. C. TRAFFIC OFFENCES(4)			TOTAL C. C. OFFENCES(5)		
	OFFENCE	RATE*	CLEAR %	OFFENCE	RATE*	CLEAR %	OFFENCE	RATE*	CLEAR %	OFFENCE	RATE*	CLEAR %	OFFENCE	RATE*	CLEAR %
D11	1,266	1,217	71.1	3,919	3,767	24.8	1,754	1,686	83.5	222	213	99.5	7,161	6,884	49.7
D12	1,631	1,677	74.9	3,929	4,039	30.9	2,377	2,443	86.4	259	266	98.1	8,196	8,425	57.9
D13	1,495	1,023	72.1	4,533	3,103	31.4	1,778	1,217	81.9	159	109	95.6	7,965	5,452	51.6
D14	2,757	1,775	64.9	9,072	5,841	24.0	2,599	1,673	81.1	341	220	98.2	14,769	9,509	43.4
D51	1,712	2,500	70.6	4,280	6,249	29.5	2,226	3,250	86.8	190	277	96.8	8,408	12,277	54.5
D52	3,118	4,027	66.8	14,763	19,068	32.0	6,620	8,550	81.4	207	267	97.6	24,708	31,913	50.2
D53	875	605	72.3	5,182	3,585	23.4	877	607	75.7	103	71	91.3	7,037	4,868	37.0
D54	1,580	1,144	74.9	4,580	3,315	28.1	1,820	1,317	84.8	197	143	97.5	8,177	5,919	51.4
D55	1,970	1,607	74.0	6,044	4,931	31.2	1,889	1,541	82.4	224	183	98.7	10,127	8,263	50.6
<b>C. F. C.</b>	<b>16,404</b>	<b>1,557</b>	<b>70.4</b>	<b>56,302</b>	<b>5,342</b>	<b>28.7</b>	<b>21,940</b>	<b>2,082</b>	<b>82.8</b>	<b>1,902</b>	<b>180</b>	<b>97.5</b>	<b>96,548</b>	<b>9,161</b>	<b>49.4</b>
D22	1,791	904	61.6	8,047	4,062	24.8	2,808	1,418	74.2	352	178	98.6	12,998	6,562	42.5
D23	2,196	1,321	63.4	7,666	4,611	24.4	2,555	1,537	79.5	212	128	95.3	12,629	7,597	43.5
D31	2,641	1,308	71.4	7,587	3,758	26.5	3,407	1,688	82.7	433	215	98.6	14,068	6,969	50.8
D32	1,792	861	65.2	8,278	3,976	30.4	2,506	1,204	75.1	266	128	97.7	12,842	6,168	45.4
D33	1,286	656	77.0	5,995	3,058	27.4	1,695	865	83.8	198	101	97.0	9,174	4,680	46.3
D41	3,417	1,428	68.3	11,133	4,653	33.9	4,597	1,921	79.0	485	203	98.6	19,632	8,205	52.1
D42	3,546	933	63.9	11,062	2,909	24.7	4,066	1,069	80.1	411	108	98.5	19,085	5,019	45.4
<b>A. F. C.</b>	<b>16,669</b>	<b>1,048</b>	<b>66.8</b>	<b>59,768</b>	<b>3,759</b>	<b>27.7</b>	<b>21,634</b>	<b>1,361</b>	<b>79.1</b>	<b>2,357</b>	<b>148</b>	<b>98.0</b>	<b>100,428</b>	<b>6,316</b>	<b>46.9</b>
<b>NSA</b>	<b>644</b>		<b>61.3</b>	<b>3,964</b>		<b>28.6</b>	<b>1,099</b>			<b>90</b>		<b>91.1</b>	<b>5,797</b>		<b>42.6</b>
<b>Toronto</b>	<b>33,717</b>	<b>1,275</b>	<b>68.5</b>	<b>120,034</b>	<b>4,540</b>	<b>28.2</b>	<b>44,673</b>	<b>1,690</b>	<b>80.9</b>	<b>4,349</b>	<b>164</b>	<b>97.7</b>	<b>202,773</b>	<b>7,670</b>	<b>48.0</b>

NSA-Not Specified Area

Note: Cleared cases may include offences committed before 2003.

**Categories of Crime:**

**C. F. C.** - Central Field Command,, **A. F. C.** - Area Field Command

(1) **Violent crime** includes homicide and homicide related offences, sexual assaults, sexual offences, non-sexual assaults, abduction, and robberies.

(2) **Property crime** includes break and enter, all types of thefts, possession of stolen goods, fraud, and mischief.

(3) **Other crime** includes all other non-traffic Criminal Code offences not covered in categories (1) and (2).

(4) **C. C. Traffic offences** include all Criminal Code traffic offences excluding criminal code 'Fail to Remain' traffic offences.

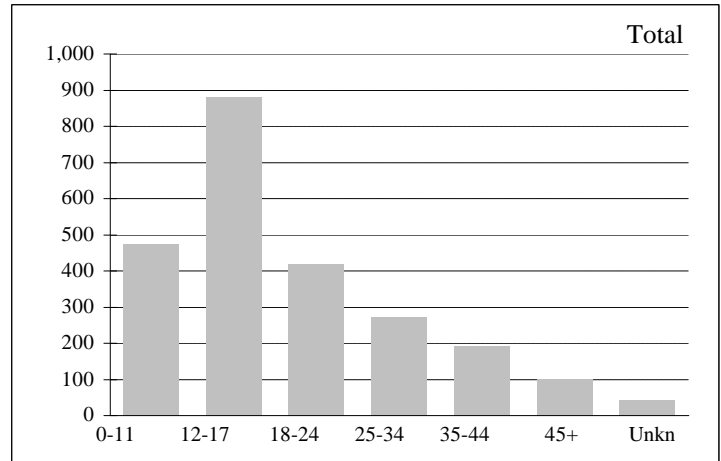
(5) **Total C. C. offences** include all the above four categories. Only Criminal Code offences are shown.

**\* Rate per 100,000 of population**  
**No allowance was given to**  
**transient or commuting population.**

\* 'Mischief' is included in the 'Property Crime' this year where as it was included in the 'Other Crime' in Reports of previous years

**Sexual Assaults\***

Age	Males	Females	Total	% of Total
0-11	129	344	473	19.49
12-17	81	801	882	36.34
18-24	33	386	419	17.26
25-34	18	253	271	11.17
35-44	8	183	191	7.87
45+	6	95	101	4.16
Unkn	2	41	43	1.77
<b>Total</b>	<b>277</b>	<b>2,103</b>	<b>2,432</b>	<b>100.21</b>

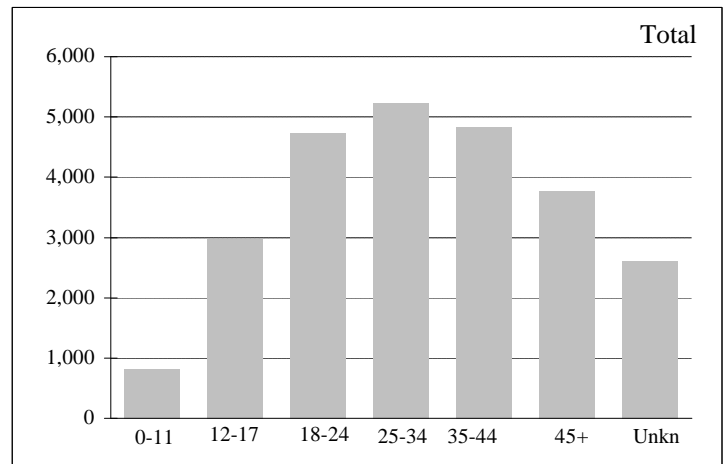


\*Includes all types of Sexual Assaults and sexual offences.

Total includes 47 offences where victim's gender is not specified.

**Non-Sexual Assaults**

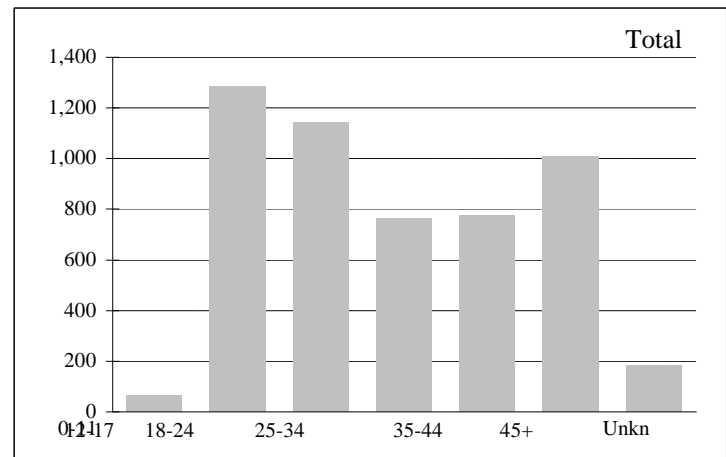
Age	Males	Females	Total	% of Total
0-11	483	324	807	3.14
12-17	1,681	1,297	2,978	11.60
18-24	2,171	2,555	4,726	18.40
25-34	2,414	2,815	5,229	20.36
35-44	2,449	2,370	4,819	18.77
45+	2,094	1,673	3,767	14.67
Unkn	1,946	651	2,597	10.11
<b>Total</b>	<b>13,238</b>	<b>11,685</b>	<b>25,672</b>	<b>99.97</b>



Total includes 749 offences where victim's gender is not specified.

**Robberies**

Age	Males	Females	Total	% of Total
0-11	56	10	66	1.22
12-17	1,128	158	1,286	23.74
18-24	857	289	1,146	21.16
25-34	517	248	765	14.12
35-44	517	258	775	14.31
45+	584	427	1,011	18.67
Unkn	127	57	184	3.40
<b>Total</b>	<b>3,786</b>	<b>1,447</b>	<b>5,416</b>	<b>100.00</b>



Total includes 183 offences where victim's gender is not specified.

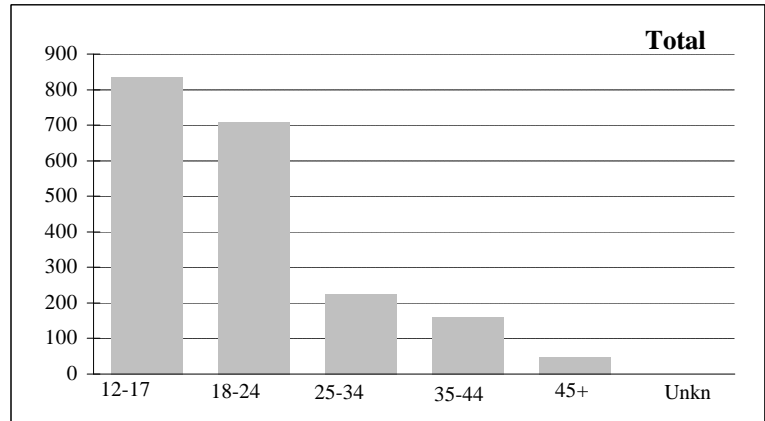
☞ These are offences against persons and not the number of persons(victims).

A person can be a victim of more than one offence.

# Persons Charged by Age and Sex

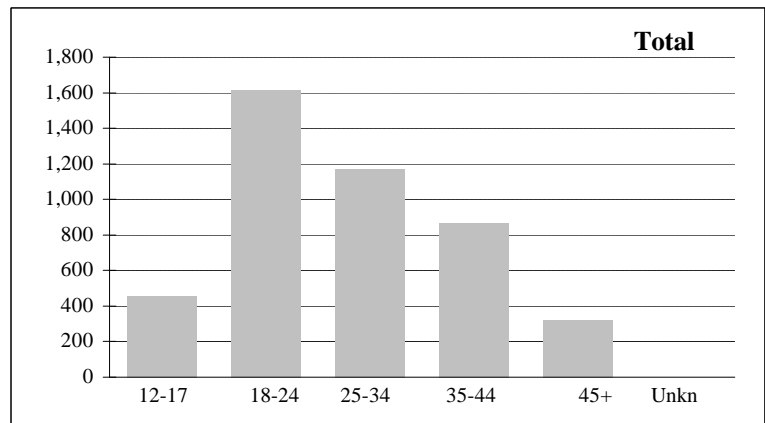
## Robberies

Age	Males	Females	Total	% of Total
12-17	766	70	<b>836</b>	42.31
18-24	657	50	<b>707</b>	35.78
25-34	190	35	<b>225</b>	11.39
35-44	129	31	<b>160</b>	8.10
45+	47	1	<b>48</b>	2.43
Unkn	0	0	<b>0</b>	0.00
<b>Total</b>	<b>1,789</b>	<b>187</b>	<b>1,976</b>	<b>100.00</b>



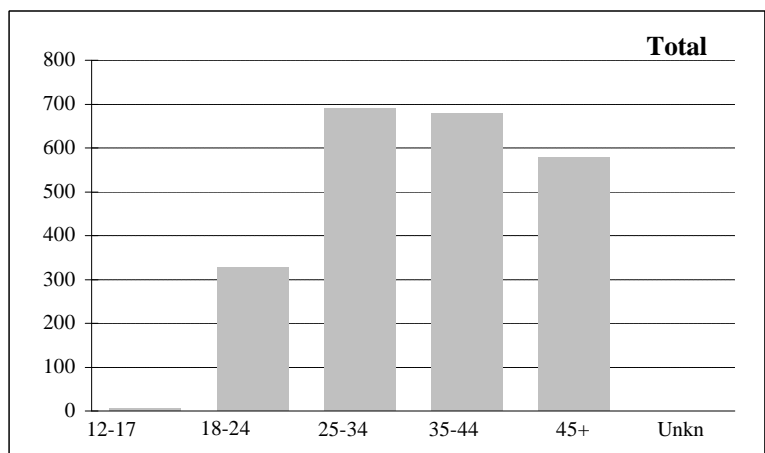
## Controlled Drugs and Substances Act

Age	Males	Females	Total	% of Total
12-17	396	57	<b>453</b>	10.24
18-24	1,421	195	<b>1,616</b>	36.54
25-34	1,015	154	<b>1,169</b>	26.43
35-44	729	136	<b>865</b>	19.56
45+	280	40	<b>320</b>	7.23
Unkn	0	0	<b>0</b>	0.00
<b>Total</b>	<b>3,841</b>	<b>582</b>	<b>4,423</b>	<b>100.00</b>



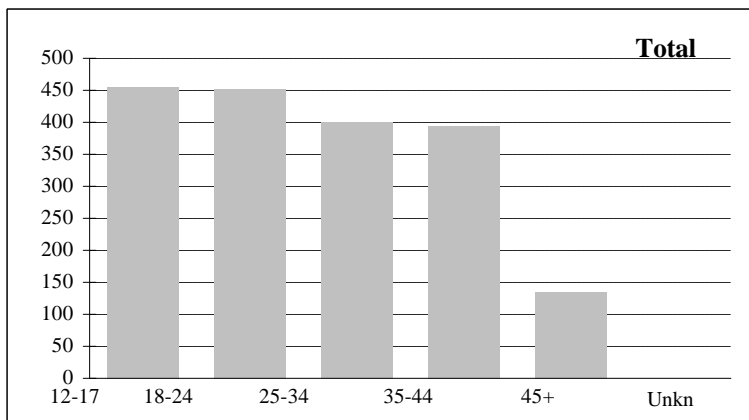
## Drinking and Driving Offences

Age	Males	Females	Total	% of Total
12-17	7	1	<b>8</b>	0.35
18-24	298	30	<b>328</b>	14.35
25-34	617	74	<b>691</b>	30.24
35-44	622	58	<b>680</b>	29.76
45+	514	64	<b>578</b>	25.30
Unkn	0	0	<b>0</b>	0.00
<b>Total</b>	<b>2,058</b>	<b>227</b>	<b>2,285</b>	<b>100.00</b>



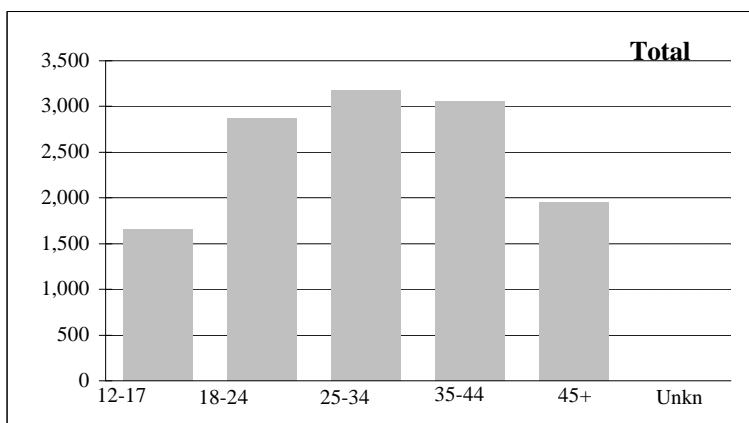
**Break and Enters**

Age	Males	Females	Total	% of Total
12-17	406	49	<b>455</b>	24.82
18-24	412	39	<b>451</b>	24.60
25-34	357	43	<b>400</b>	21.82
35-44	357	36	<b>393</b>	21.44
45+	123	11	<b>134</b>	7.31
Unkn	0	0	<b>0</b>	0.00
<b>Total</b>	<b>1,655</b>	<b>178</b>	<b>1,833</b>	<b>100.00</b>



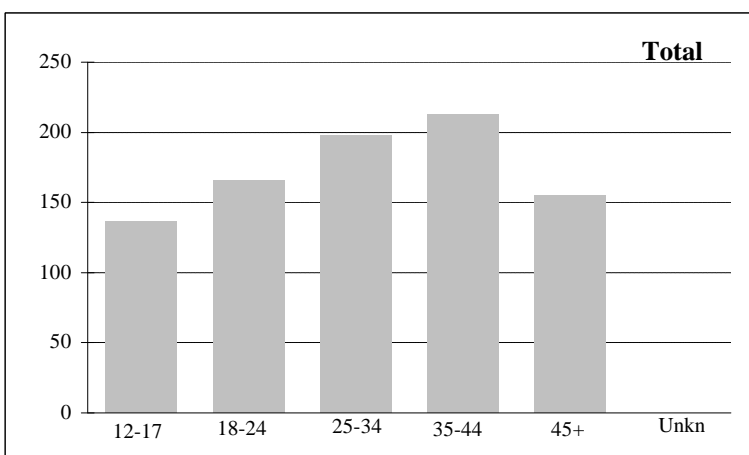
**Non-Sexual Assaults**

Age	Males	Females	Total	% of Total
12-17	1,229	429	<b>1,658</b>	13.03
18-24	2,419	451	<b>2,870</b>	22.55
25-34	2,626	559	<b>3,185</b>	25.03
35-44	2,570	492	<b>3,062</b>	24.06
45+	1,680	270	<b>1,950</b>	15.32
Unkn	0	0	<b>0</b>	0.00
<b>Total</b>	<b>10,524</b>	<b>2,201</b>	<b>12,725</b>	<b>100.00</b>



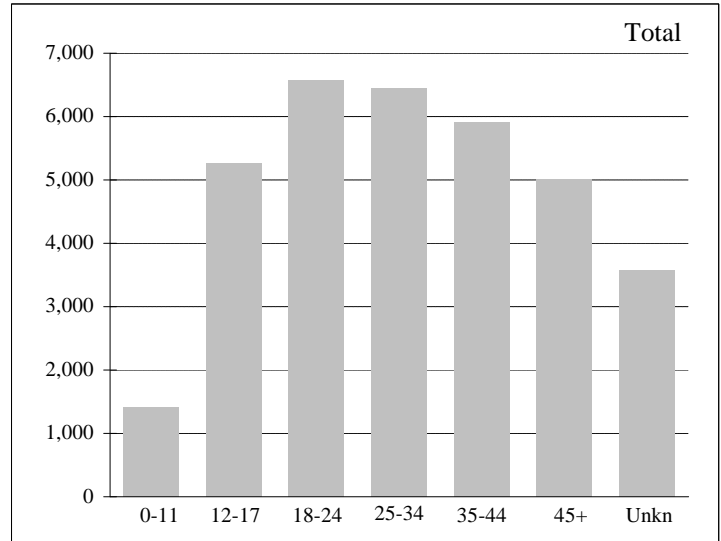
**Sexual Assaults**

Age	Males	Females	Total	% of Total
12-17	130	7	<b>137</b>	15.77
18-24	165	1	<b>166</b>	19.10
25-34	196	2	<b>198</b>	22.78
35-44	211	2	<b>213</b>	24.51
45+	155	0	<b>155</b>	17.84
Unkn	0	0	<b>0</b>	0.00
<b>Total</b>	<b>857</b>	<b>12</b>	<b>869</b>	<b>100.00</b>



## Violent Crime\*

Age	Males	Females	Unknown	Total	% of Total
0-11	690	713	14	<b>1,417</b>	4.14
12-17	2,919	2307	43	<b>5,269</b>	15.40
18-24	3,153	3333	92	<b>6,578</b>	19.22
25-34	3,013	3391	55	<b>6,459</b>	18.87
35-44	3,012	2861	45	<b>5,918</b>	17.29
45+	2,719	2244	45	<b>5,008</b>	14.63
Unkn	2,098	763	711	<b>3,572</b>	10.44
<b>Total</b>	<b>17,604</b>	<b>15,612</b>	<b>1,005</b>	<b>34,221</b>	<b>100.00</b>



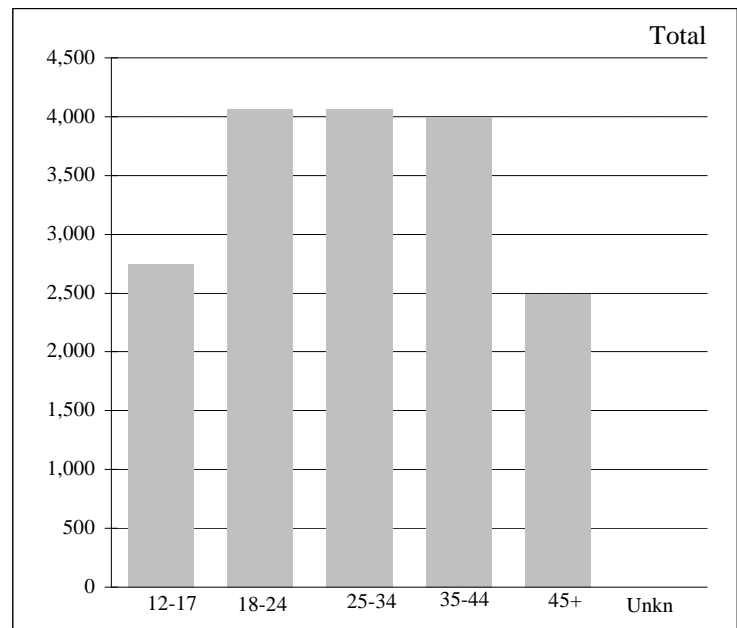
\* **Violent crime** includes homicide and homicide related offences, sexual assaults, sexual offences, non-sexual assaults, abduction, and robberies.

These are the number of persons (victims) and not the number Violent Offences against persons as indicated on pg.15.

A person can be a victim of more than one offence.

## Persons charged for violent crime

Age	Males	Females	Total	% of Total
12-17	2,183	557	<b>2,740</b>	15.80
18-24	3,519	546	<b>4,065</b>	23.44
25-34	3,392	665	<b>4,057</b>	23.39
35-44	3,398	598	<b>3,996</b>	23.04
45+	2,188	306	<b>2,494</b>	14.38
Unkn	0	0	<b>0</b>	0.00
<b>Total</b>	<b>14,680</b>	<b>2,672</b>	<b>17,352</b>	<b>100.05</b>

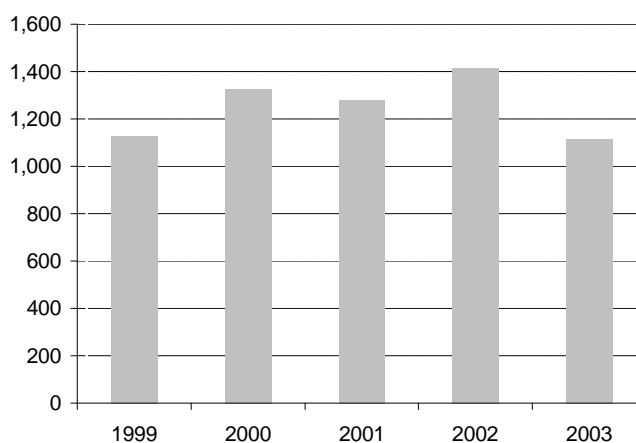




	1999	2000	2001	2002	2003
Attempted Murder	2	2	5	4	2
Aggravated Assault	6	4	7	5	4
Assault With Weapon or Causing Bodily Harm	82	103	95	94	72
Assault	98	105	94	74	65
Assault Police Officer/Police Officer	535	582	598	673	557
Assault to Resist Arrest	405	531	482	566	414
Dangerous operation of a motor vehicle causing bodily harm	2	4	1	4	2
<b>Total offences</b>	<b>1,128</b>	<b>1,327</b>	<b>1,281</b>	<b>1,416</b>	<b>1,114</b>

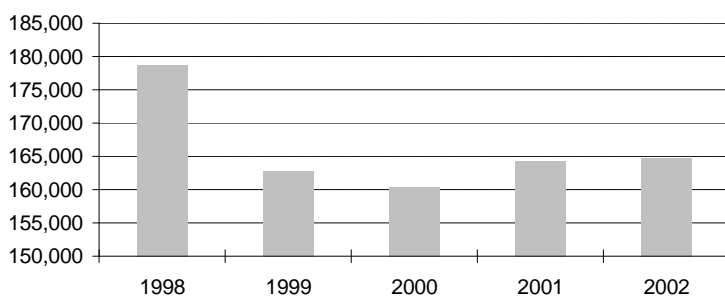
**Selected Offences Against Police Officers**

Year	No. of Offences
1999	1,128
2000	1,327
2001	1,281
2002	1,416
2003	1,114



**Incidents as Reported to Statistics Canada\***

Year	Incidents
1998	178,789
1999	162,726
2000	160,349
2001	164,353
2002	164,670



\* Total Criminal Code(C.C.), excluding C. C. Traffic incidents.  
 Value for 2003 is not available from Statistics Canada at press time;  
 the 2004 annual report will contain this information.

# Criminal Code Offences Reported and Cleared\*- Field Command and Toronto Totals

TPS 2003 Statistical Report

	First Degree Murder	Second Degree Murder	Manslaughter	Attempted Murder	Sexual Assault +	Other Assault	Robbery	Break and Enter	Theft of Motor Vehicle**	Theft Over \$5,000	Theft Under \$5,000	Fraud	Offensive Weapons offences	Other Criminal Code	Total Criminal Code Non-Traffic	Criminal Code Traffic	Total Criminal Code
--	---------------------	----------------------	--------------	------------------	------------------	---------------	---------	-----------------	--------------------------	--------------------	---------------------	-------	----------------------------	---------------------	---------------------------------	-----------------------	---------------------

Central Field Command

Reported	19	8	1	41	912	12,618	2,391	7,943	4,326	1,216	26,671	5,008	2,303	31,190	<b>94,647</b>	<b>1,902</b>	<b>96,549</b>
Cleared	3	8	1	26	912	9,599	886	1,450	613	173	5,576	2,672	2,206	21,689	<b>45,814</b>	<b>1,856</b>	<b>47,670</b>
% Cleared	15.8	100.0	100.0	63.4	100.0	76.1	37.1	18.3	14.2	14.2	20.9	53.4	95.8	69.5	<b>48.4</b>	<b>97.6</b>	<b>49.4</b>

Area Field Command

Reported	31	7	0	58	941	12,337	2,741	7,487	9,225	1,602	24,483	6,006	2,653	30,500	<b>98,071</b>	<b>2,357</b>	<b>100,428</b>
Cleared	15	6	0	28	714	9,052	837	1,030	884	177	6,472	3,286	2,537	19,788	<b>44,826</b>	<b>2,311</b>	<b>47,137</b>
% Cleared	48.4	85.7	0.0	48.3	75.9	73.4	30.5	13.8	9.6	11.0	26.4	54.7	95.6	64.9	<b>45.7</b>	<b>98.0</b>	<b>46.9</b>

Unknown Patrol Area

Reported	0	0	0	2	64	424	96	174	464	371	1,657	648	193	1,613	<b>5,706</b>	<b>90</b>	<b>5,796</b>
Cleared	0	0	0	2	37	261	26	46	87	34	275	340	186	1,052	<b>2,346</b>	<b>82</b>	<b>2,428</b>
% Cleared	0.0	0.0	0.0	100.0	57.8	61.6	27.1	26.4	18.8	9.2	16.6	52.5	96.4	65.2	<b>41.1</b>	<b>91.1</b>	<b>41.9</b>

Toronto Total

Reported	50	15	1	101	1,917	25,379	5,228	15,604	14,015	3,189	52,811	11,662	5,149	63,303	<b>198,424</b>	<b>4,349</b>	<b>202,773</b>
Cleared	18	14	1	56	1,663	18,912	1,749	2,526	1,584	384	12,323	6,298	4,929	42,529	<b>92,986</b>	<b>4,249</b>	<b>97,235</b>
% Cleared	36.0	93.3	100.0	55.4	86.8	74.5	33.5	16.2	11.3	12.0	23.3	54.0	95.7	67.2	<b>46.9</b>	<b>97.7</b>	<b>48.0</b>

\* Cleared cases may include offences reported prior to 2003.

† Statistics do not include Criminal Code 'Fail to Remain' offences.

\*\* Include motor cycle and snow vehicle and all attempts.

"+ " Sexual Assaults do not include non assaultive Sexual offences

# Criminal Code Offences Reported and Cleared\*- Central Field Command

TPS 2003 Statistical Report

		First Degree Murder	Second Degree Murder	Manslaughter	Attempted Murder	Sexual Assault	Other Assault	Robbery	Break and Enter	Theft of Motor Vehicle**	Theft Over \$5,000	Theft Under \$5,000	Fraud	Offensive Weapons Offences	Other Criminal Code	Total Criminal Code Non-Traffic	Criminal Code Traffic†	Total Criminal Code
11 Division	Reported	2	0	0	3	53	1,001	183	564	385	74	1,648	295	206	2,525	<b>6,939</b>	<b>222</b>	<b>7,161</b>
	Cleared	1	0	0	2	43	758	76	90	48	7	292	140	193	1,676	<b>3,326</b>	<b>222</b>	<b>3,548</b>
	% Cleared	50.0	0.0	0.0	66.7	81.1	75.7	41.5	16.0	12.5	9.5	17.7	47.5	93.7	66.4	<b>47.9</b>	<b>100.0</b>	<b>49.5</b>
12 Division	Reported	1	0	1	4	100	1,303	164	493	448	98	1,662	369	364	2,930	<b>7,937</b>	<b>259</b>	<b>8,196</b>
	Cleared	0	0	1	2	80	1,023	61	101	47	12	486	178	350	2,141	<b>4,482</b>	<b>254</b>	<b>4,736</b>
	% Cleared	0.0	0.0	100.0	50.0	80.0	78.5	37.2	20.5	10.5	12.2	29.2	48.2	96.2	73.1	<b>56.5</b>	<b>98.1</b>	<b>57.8</b>
13 Division	Reported	1	1	0	9	105	1,142	191	756	503	83	1,625	598	201	2,591	<b>7,806</b>	<b>159</b>	<b>7,965</b>
	Cleared	0	1	0	6	85	866	78	190	66	9	372	311	192	1,747	<b>3,923</b>	<b>152</b>	<b>4,075</b>
	% Cleared	0.0	100.0	0.0	66.7	81.0	75.8	40.8	25.1	13.1	10.8	22.9	52.0	95.5	67.4	<b>50.3</b>	<b>95.6</b>	<b>51.2</b>
14 Division	Reported	4	3	0	2	133	2,130	427	1,333	758	171	4,569	578	351	3,969	<b>14,428</b>	<b>341</b>	<b>14,769</b>
	Cleared	1	3	0	1	93	1,483	161	245	95	14	728	272	342	2,621	<b>6,059</b>	<b>335</b>	<b>6,394</b>
	% Cleared	25.0	0.0	0.0	50.0	69.9	69.6	37.7	18.4	12.5	8.2	15.9	47.1	97.4	66.0	<b>42.0</b>	<b>98.2</b>	<b>43.3</b>
51 Division	Reported	3	0	0	5	86	1,233	337	631	298	112	1,880	242	219	3,172	<b>8,218</b>	<b>190</b>	<b>8,408</b>
	Cleared	0	0	0	4	71	996	105	102	49	19	329	140	209	2,426	<b>4,450</b>	<b>184</b>	<b>4,634</b>
	% Cleared	0.0	0.0	0.0	80.0	82.6	80.8	31.2	16.2	16.4	17.0	17.5	57.9	95.4	76.5	<b>54.1</b>	<b>96.8</b>	<b>55.1</b>

\* Cleared cases may include offences reported prior to 2003.

\*\* Include motor cycle and snow vehicle and all attempts.

† Statistics do not include Criminal Code 'Fail to Remain' offences.

## Criminal Code Offences Reported and Cleared\*- Central Field Command(Cont'd)

TPS 2003 Statistical Report

		First Degree Murder	Second Degree Murder	Manslaughter	Attempted Murder	Sexual Assault	Other Assault	Robbery	Break and Enter	Theft of Motor Vehicle**	Theft Over \$5,000	Theft Under \$5,000	Fraud	Offensive Weapons Offences	Other Criminal Code	Total Criminal Code Non-Traffic	Criminal Code Traffic†	Total Criminal Code
52 Division	Reported	4	3	0	12	167	2,354	519	1,557	478	364	8,484	1,499	440	8,620	<b>24,501</b>	207	24,708
	Cleared	0	3	0	9	104	1,747	172	286	90	43	1,851	899	424	6,411	<b>12,039</b>	202	12,241
	% Cleared	0.0	0.0	0.0	75.0	62.3	74.2	33.1	18.4	18.8	11.8	21.8	60.0	96.4	74.4	<b>49.1</b>	<b>97.6</b>	<b>49.5</b>
53 Division	Reported	0	0	0	0	61	658	134	968	462	128	2,195	551	80	1,697	<b>6,934</b>	103	7,037
	Cleared	0	0	0	0	47	516	53	147	81	36	446	251	78	892	<b>2,547</b>	94	2,641
	% Cleared	0.0	0.0	0.0	0.0	77.0	78.4	39.6	15.2	17.5	28.1	20.3	45.6	97.5	52.6	<b>36.7</b>	<b>91.3</b>	<b>37.5</b>
54 Division	Reported	1	0	0	5	93	1,221	218	772	462	82	1,722	513	180	2,711	<b>7,980</b>	197	8,177
	Cleared	1	0	0	1	62	982	97	125	70	19	261	309	166	1,866	<b>3,959</b>	192	4,151
	% Cleared	100.0	0.0	0.0	20.0	66.7	80.4	44.5	16.2	15.2	23.2	15.2	60.2	92.2	68.8	<b>49.6</b>	<b>97.5</b>	<b>50.8</b>
55 Division	Reported	3	1	0	1	113	1,576	218	869	532	104	2,886	363	262	2,975	<b>9,903</b>	224	10,127
	Cleared	0	1	0	1	89	1,228	83	164	67	14	811	172	252	1,909	<b>4,791</b>	221	5,012
	% Cleared	0.0	100.0	0.0	100.0	78.8	77.9	38.1	18.9	12.6	13.5	28.1	47.4	96.2	64.2	<b>48.4</b>	<b>98.7</b>	<b>49.5</b>

\* Cleared cases may include offences reported prior to 2003.

\*\* Include motor cycle and snow vehicle and all attempts.

†Statistics do not include Criminal Code 'Fail to Remain' offences.

# Criminal Code Offences Reported and Cleared\*- Area Field Command

TPS 2003 Statistical Report

	First Degree Murder	Second Degree Murder	Manslaughter	Attempted Murder	Sexual Assault	Other Assault	Robbery	Break and Enter	Theft of Motor Vehicle**	Theft Over \$5,000	Theft Under \$5,000	Fraud	Offensive Weapons Offences	Other Criminal Code	Total Criminal Code Non-Traffic	Criminal Code Traffic†	Total Criminal Code
--	---------------------	----------------------	--------------	------------------	----------------	---------------	---------	-----------------	--------------------------	--------------------	---------------------	-------	----------------------------	---------------------	---------------------------------	------------------------	---------------------

22 Division	Reported	2	2	0	1	102	1,319	291	995	1,103	248	3,430	699	287	4,167	<b>12,646</b>	<b>352</b>	<b>12,998</b>
	Cleared	1	1	0	1	69	858	108	160	113	30	741	399	281	2,425	<b>5,187</b>	<b>347</b>	<b>5,534</b>
	% Cleared	50.0	50.0	0.0	100.0	67.6	65.0	37.1	16.1	10.2	12.1	21.6	57.1	97.9	58.2	41.0	<b>98.6</b>	<b>42.6</b>

23 Division	Reported	8	1	0	2	99	1,676	346	771	1,415	236	3,241	722	327	3,573	<b>12,417</b>	<b>212</b>	<b>12,629</b>
	Cleared	3	1	0	0	71	1,166	95	128	94	22	775	340	312	2,276	<b>5,283</b>	<b>202</b>	<b>5,485</b>
	% Cleared	37.5	100.0	0.0	0.0	71.7	69.6	27.5	16.6	6.6	9.3	23.9	47.1	95.4	63.7	<b>42.5</b>	<b>95.3</b>	<b>43.4</b>

31 Division	Reported	3	0	0	15	155	1,973	410	914	1,417	272	2,762	855	439	4,420	<b>13,635</b>	<b>433</b>	<b>14,068</b>
	Cleared	0	0	0	12	124	1,549	123	123	117	28	674	442	412	3,076	<b>6,680</b>	<b>427</b>	<b>7,107</b>
	% Cleared	0.0	0.0	0.0	80.0	80.0	78.5	30.0	13.5	8.3	10.3	24.4	51.7	93.8	69.6	<b>49.0</b>	<b>98.6</b>	<b>50.5</b>

32 Division	Reported	2	0	0	7	105	1,384	252	901	1,055	207	3,668	1,034	174	3,787	<b>12,576</b>	<b>266</b>	<b>12,842</b>
	Cleared	2	0	0	3	75	987	70	100	187	34	1,083	651	172	2,433	<b>5,797</b>	<b>260</b>	<b>6,057</b>
	% Cleared	100.0	0.0	0.0	42.9	71.4	71.3	27.8	11.1	17.7	16.4	29.5	63.0	98.9	64.2	<b>46.1</b>	<b>97.7</b>	<b>47.2</b>

\* Cleared cases may include offences reported prior to 2003.

\*\* Include motor cycle and snow vehicle and all attempts.

† Statistics do not include Criminal Code 'Fail to Remain' offences.

Continued on next page

## Criminal Code Offences Reported and Cleared\*- Area Field Command(Cont'd)

TPS 2003 Statistical Report

	First Degree Murder	Second Degree Murder	Manslaughter	Attempted Murder	Sexual Assault	Other Assault	Robbery	Break and Enter	Theft of Motor Vehicle**	Theft Over \$5,000	Theft Under \$5,000	Fraud	Offensive Weapons Offences	Other Criminal Code	Total Criminal Code Non-Traffic	Criminal Code Traffic†	Total Criminal Code
--	---------------------	----------------------	--------------	------------------	----------------	---------------	---------	-----------------	--------------------------	--------------------	---------------------	-------	----------------------------	---------------------	---------------------------------	------------------------	---------------------

33 Division	Reported	4	0	0	8	84	959	182	731	748	144	2,572	645	226	2,673	<b>8,976</b>	<b>198</b>	<b>9,174</b>
	Cleared	2	0	0	2	71	788	83	73	98	19	601	331	218	1,718	<b>4,004</b>	<b>192</b>	<b>4,196</b>
	%Cleared	50.0	0.0	0.0	25.0	84.5	82.2	45.6	10.0	13.1	13.2	23.4	51.3	96.5	64.3	<b>44.6</b>	<b>97.0</b>	<b>45.7</b>

41 Division	Reported	3	2	0	7	189	2,595	481	1,440	1,537	214	4,730	1,148	515	6,286	<b>19,147</b>	<b>485</b>	<b>19,632</b>
	Cleared	3	2	0	3	152	1,900	149	208	117	18	1,672	702	494	4,245	<b>9,665</b>	<b>478</b>	<b>10,143</b>
	% Cleared	100.0	100.0	0.0	42.9	80.4	73.2	31.0	14.4	7.6	8.4	35.3	61.1	95.9	67.5	<b>50.5</b>	<b>98.6</b>	<b>51.7</b>

42 Division	Reported	9	2	0	18	207	2,431	779	1,735	1,950	281	4,080	903	685	5,594	<b>18,674</b>	<b>411</b>	<b>19,085</b>
	Cleared	4	2	0	7	152	1,804	209	238	158	26	926	421	648	3,615	<b>8,210</b>	<b>405</b>	<b>8,615</b>
	% Cleared	44.4	100.0	0.0	38.9	73.4	74.2	26.8	13.7	8.1	9.3	22.7	46.6	94.6	64.6	<b>44.0</b>	<b>98.5</b>	<b>45.1</b>

\* Cleared cases may include offences reported prior to 2003.

\*\* Include motor cycle and snow vehicle and all attempts.

†Statistics do not include Criminal Code 'Fail to Remain' offences.

## Traffic and Other Charges Laid - by Division

TPS 2003 Statistical Report

	Criminal Code Traffic ***						Other Offences				
	Dangerous Driving	Drive While Impaired	Refuse Breath/Blood/Screen	Over 80 mg	Fail to Remain	Drive while Disqualified	Liquor Licence Act - Drunk	Liquor Licence Act - Other	Municipal By-Laws	Total†	Highway Traffic Act
11 Division	19	51	18	97	21	4	274	180	597	1,051	13,019
12 Division	22	87	31	94	25	15	108	205	337	650	12,248
13 Division	23	45	13	47	17	8	105	124	999	1,228	29,237
14 Division	34	90	24	132	27	2	407	1,013	1,122	2,542	22,484
51 Division	18	57	13	61	11	14	599	753	686	2,038	7,577
52 Division	26	38	9	49	10	4	706	2,249	2,740	5,695	12,560
53 Division	7	32	6	31	12	3	94	99	241	434	9,854
54 Division	25	46	9	86	29	7	122	160	565	847	14,179
55 Division	24	76	13	82	18	7	219	447	1,127	1,793	12,907
<i>Central Field Command</i>	<b>198</b>	<b>522</b>	<b>136</b>	<b>679</b>	<b>170</b>	<b>64</b>	<b>2,634</b>	<b>5,230</b>	<b>8,414</b>	<b>16,278</b>	<b>134,065</b>
22 Division	27	104	25	111	34	8	172	1,324	328	1,824	21,841
23 Division	23	65	14	64	18	4	111	273	504	888	27,231
31 Division	54	146	39	175	37	18	129	592	516	1,237	32,799
32 Division	25	74	15	101	16	13	138	149	2,778	3,065	18,914
33 Division	28	30	13	41	18	8	39	40	453	532	19,735
41 Division	61	166	31	183	28	14	182	307	1,377	1,866	17,794
42 Division	70	118	16	124	42	17	121	1,040	130	1,291	31,614
<i>Area Field Command</i>	<b>288</b>	<b>703</b>	<b>153</b>	<b>799</b>	<b>193</b>	<b>82</b>	<b>892</b>	<b>3,725</b>	<b>6,086</b>	<b>10,703</b>	<b>169,928</b>
<b>Toronto</b>	<b>486</b>	<b>1,225</b>	<b>289</b>	<b>1,478</b>	<b>363</b>	<b>146</b>	<b>3587**</b>	<b>9220**</b>	<b>14,500</b>	<b>26,981</b>	<b>303,993</b>

☞ Reflects the total Highway Traffic Act charges issued by divisional personnel.

The Total of the H.T.A. charges issued by divisional, traffic and other personnel was 379,181.

† Excluding Highway Traffic Act.

\*\* Includes charges issued by other units.

\*\*\* Source CIPS

☞ Reflects the total Bylaw charges issued by divisional personnel. The total of the Bylaw charges issued by all units was 15,594.

# Criminal Code Offences - Persons Charged

TPS 2002 Statistical Report

	Murder	Attempted Murder	Sexual Assault	Other Assault	Robbery	Break and Enter	Theft Over \$5,000	Theft Under \$5,000	Theft Other	Fraud	Offensive Weapons Offences	Other Criminal Code	Total Criminal Code Traffic
--	--------	------------------	----------------	---------------	---------	-----------------	--------------------	---------------------	-------------	-------	----------------------------	---------------------	-----------------------------

Young Offenders	Male	13	19	130	1,229	766	406	152	1,566	87	100	788	3,367	71
	Female	0	0	7	429	70	49	10	1,216	28	46	84	735	7
	Total	13	19	137	1,658	836	455	162	2,782	115	146	872	4,102	78

Adults	Male	52	73	727	9,295	1,023	1,249	341	5,755	138	1,780	2,188	19,365	2,570
	Female	6	4	5	1,772	117	129	63	2,865	37	758	248	3,780	258
	Total	58	77	732	11,067	1,140	1,378	404	8,620	175	2,538	2,436	23,145	2,828

<b>Toronto</b>	<b>71</b>	<b>96</b>	<b>869</b>	<b>12,725</b>	<b>1,976</b>	<b>1,833</b>	<b>566</b>	<b>11,402</b>	<b>290</b>	<b>2,684</b>	<b>3,308</b>	<b>27,247</b>	<b>2,906</b>
----------------	-----------	-----------	------------	---------------	--------------	--------------	------------	---------------	------------	--------------	--------------	---------------	--------------

Source: TPS CIPS

**Note:**

May include arrests made for offences committed in previous years.

In previous years, total persons arrested could be obtained by adding the columns or rows.

Due to change of source data base, 2003 total cannot be obtained by adding the respective columns

as a person may be charged with more than one category of offence in the same incident.



## Traffic and Other Offences - Persons Charged

Criminal Code Traffic						Other Offences	
Fail to Remain	Dangerous Driving	Drive While Impaired	Refuse Breath/Blood/Screen	Over 80 mg	Drive while Disqualified	C.D.S.A*	Other Federal Statutes

Young Offenders	Male	41	52	6	0	4	3	396	250
	Female	6	6	1	0	0	0	57	57
	Total	47	58	7	0	4	3	453	307

Adults	Male	304	447	1,258	304	1,616	151	3,443	806
	Female	23	26	127	40	175	7	525	152
	Total	327	473	1,385	344	1,791	158	3,968	958

<b>Toronto</b>	<b>374</b>	<b>531</b>	<b>1,392</b>	<b>344</b>	<b>1,795</b>	<b>161</b>	<b>4,421</b>	<b>1,265</b>
----------------	------------	------------	--------------	------------	--------------	------------	--------------	--------------

\* Controlled Drugs and Substances Act.

**Note:**

May include arrests made for offences committed in previous years.

In previous years, total persons arrested could be obtained by adding the columns or rows.

Due to change of source data base, 2003 total cannot be obtained by adding the respective columns as a person may be charged with more than one category of offence in the same incident.

# Persons charged by Case unit⊗

TPS 2003 Statistical Report

Case Unit	Homicide	Attempted Murder	Sexual Assault	Other Assault	Robbery	Break and Enter	Theft Over	Theft Under	Theft Other	Fraud	Offensive Weapons Offences	Other Criminal Code	Criminal Code Traffic	C.D.S.A.	Other Offences**
D11	0	4	23	527	62	82	15	295	7	64	145	1,150	138	143	101
D12	0	2	42	661	53	77	21	422	6	88	175	1,318	166	200	158
D13	0	10	54	590	61	118	39	306	5	107	125	1,170	92	277	105
D14	1	8	65	1,092	161	168	39	768	16	129	230	2,320	194	552	71
D22	4	1	41	646	100	126	49	614	12	156	124	1,627	174	76	59
D23	3	2	53	812	122	83	39	799	16	158	166	1,368	109	160	95
D31	0	13	80	1,036	114	123	33	569	30	169	240	1,798	285	264	118
D32	0	3	46	653	60	76	31	924	12	222	110	1,204	154	67	43
D33	0	1	35	541	108	69	27	599	31	118	147	1,040	99	75	30
D41	2	7	81	1,249	144	168	43	1,728	26	296	258	2,235	275	123	78
D42	3	10	90	1,241	233	233	56	902	62	174	390	2,395	223	288	51
D51	1	3	38	685	112	75	20	264	9	61	136	1,952	104	638	54
D52	0	10	70	1,174	167	130	39	1,823	9	366	288	3,137	90	431	72
D53	0	0	19	249	52	50	18	289	11	86	41	473	50	46	14
D54	0	5	36	680	58	86	41	212	10	86	124	1,195	126	96	40
D55	2	1	28	771	79	141	25	845	10	100	168	1,427	128	184	12
SQUADS→	55	13	41	47	274	18	13	20	5	262	219	415	8	31	46
INT	0	1	0	2	0	0	1	0	0	0	0	7	0	3	1
SIS	0	2	4	6	4	0	9	6	1	24	91	175	9	63	58
TSV	0	0	0	4	0	0	6	5	4	6	5	111	455	12	3
OTHER	0	0	23	59	12	10	2	12	8	12	126	730	27	692	55
<b>Toronto</b>	<b>71</b>	<b>96</b>	<b>869</b>	<b>12,725</b>	<b>1,976</b>	<b>1,833</b>	<b>566</b>	<b>11,402</b>	<b>290</b>	<b>2,684</b>	<b>3,308</b>	<b>27,247</b>	<b>2,906</b>	<b>4,421</b>	<b>1,264</b>

\* Includes attempt thefts

\*\* Includes federal statutes other than drug acts, and other provincial statutes. Excludes Municipal Bylaws and Liquor Control Acts.

⊗ Unit of the arresting officer

→ Homicide, Fraud, Hold-up, Sexual Assault and Toronto Drug Squads

INT - Intelligent Services, SIS - Special Investigative Services, TSV - Traffic Services

Due to change of source data base, 2003 total cannot be obtained by adding the respective columns as a person may be charged with more than one category of offence in the same incident.

## ***Acknowledgement***

### **Managing Editor**

Corporate Communications

### **Editor**

Corporate Communications

### **Crime Statistics**

Analysis Support - Corporate Planning

### **Statistical Report Layout/Design**

Karottu George, Analysis Support - Corporate Planning

Lee George, Video Services

John Angus, Corporate Communications(Internet Version Layout/Design)

### **Printing and Production**

City of Toronto Corporate Reproduction Services

*A special thanks to all contributors, especially Det. Dave Angus, Det. Constable Wayne Johnson, and Maureen Connolly of the Analysis Support - Corporate Planning for their unfailing support.*

*Reproduction in whole or in part is permitted subject to the requirement that it is not for monetary gain; reproduced material remains in context; and the source is acknowledged on all copies as follows: Toronto Police Service 2003 Statistical Report, along with date and page references.*

*Visit our Website at: **[www.TorontoPolice.on.ca](http://www.TorontoPolice.on.ca)***

*You may reach us by E-mail at:*

***[CorporateCommunications@TorontoPolice.on.ca](mailto:CorporateCommunications@TorontoPolice.on.ca)***