



# 1997

**METROPOLITAN TORONTO POLICE SERVICE**  
**STATISTICAL REPORT**



**To Serve And Protect ♦ Working With The Community**

## *Table of Contents*

Introduction	i - ii
Uniform Strength, Expenditures & Distribution	1
Budget Information	1
Police Personnel by Rank and Classification	2
Police Personnel by Division and Field Command	3
Fleet Information	4
Calls for Service	5
Public Complaints	6
Community policing & Miscellaneous Information	7-8
General Data by Division and Field Command	9
Traffic Accidents	10-11
 <b><u>General Crime Information</u></b>	
Criminal Code Offences - Highlights	12-14
Criminal Code Offences by Category	15-16
Selected Offences Against Victims by Age and Sex	17
Persons Charged by Age and Sex	18-19
Violent Crime Statistics	20
Selected Offences Against Police Officers	21
Total Incidents Reported to Statistics Canada	21
 <b><u>Criminal Code Offences Reported and Cleared</u></b>	
Field Command and Metro Totals	22
By Division and Field Command	23-27
 <u>Traffic and Other Offences</u>	 28
 <b><u>Persons Charged</u></b>	
Criminal Code Offences	29
Traffic and Other Offences	30
By Unit of Officer	31

## ***INTRODUCTION***

The Metropolitan Toronto Police Service publishes crime statistics based upon the number of reported offences whereas Statistics Canada publishes crime statistics based on reported incidents of crime. In offence based statistics, more than one offence may be included in one incident. So care should be taken when comparing statistics published by both agencies.

### **Types of Offences**

**Violent offences** are crimes involving the application or threat of application of force to a person. These include homicide, homicide related offence, abduction, sexual assault, sexual offence, non-sexual assault and robbery.

**Property offences** involve unlawful acts with respect to property but do not involve the use or threat of violence against an individual. These may include theft, possession of stolen property, break and enter and fraud.

**Other Criminal Code** offences include the remaining non-traffic *Criminal Code* offences that are classified as neither violent nor property offences. Examples are prostitution, gaming and betting, mischief, offences against public order, bail violations.

possession, trafficking, importation or cultivation of various illicit, controlled and restricted drugs.

**Other federal statute** offences include violations under all other federal statutes. They may include Bankruptcy Act, Customs Act, Excise Act, Immigration Act.

**Provincial Statute** offences include all violations under provincial statutes excepting traffic related statutes. Examples are Coroner's Act, Environmental Protection Act, Mental Hospital Act and Liquor Licence Act. The majority of these offences come under Liquor Licence Act.

### **General Information**

Due to technological change, 'Fail to remain' violations, which form a major portion of Criminal Code traffic offences, are not available for publishing. As a result, care should be taken when comparing the total Criminal Code offences across years. It is recommended that Criminal Code offences *excluding traffic offences* may be taken for analyzing crime trends.

Offences published in a particular year include offences reported to police or became known to police during the year. However, offences occurred in the past can

## Overview of Statistics, 1997

Reported **Criminal Code Offences** *excluding traffic offences* fell by 5.3% in 1997 over the previous year.

- **Violent crime** went up by 4.8% in 1997 from 1996.

- **Property crime** dropped 7.5.0% over the same period.

- **Other criminal Code Offences** decreased 5.5% in 1997 from 1996.

- There were 61 homicides in 1997 compared to 58 in 1996 an increase of 5.2%. There was only one (1) young offender charged with homicide in 1997 compared to 10 in 1996.

- Sexual assaults increased 7.5%. About half of these offences were committed against persons up to and including 17 years of age. There were 141 young offenders charged for the crime in 1997 compared to 162 in 1996.

- Total non-sexual assaults registered an increase for the first time in four years: 7.3% over 1996. Minor assaults which is about 76.0% of the crime increased 5.90% while major assaults in the category increased 11.8%. There were 1625 young offenders charged for the crime in 1997

banks and financial institutions went down 17.0% while purse snatching decreased 15.4%

- Break and enters to houses decreased 4.9%; entries to apartments dropped 4.0%.

- There were 14,532 motor vehicles reported stolen in 1997, representing an decrease of 12.5% from 1996. About 43.0% of persons charged for stealing motor vehicles are young offenders.

- On the Metro roads: The total number of accidents increased by 2.1% in 1997 over 1996. While injury accidents decreased by 1.0%, property damage reportable accidents increased by 5.2% over the previous year.

- There were 720 complaints lodged against police officers in 1997, representing a decrease of 20.9% over 1996.

- Number of vehicles stopped by R.I.D.E. (Reduced Impaired Driving Everywhere) decreased in 1997 by 11.5% to 103,695.

- The Service had 510 fewer police officers in 1997 than in 1993, a reduction of 9.4%; the population of Metropolitan Toronto increased by 4.4% during the same period.

- Total calls for service received at the Communications Centre decreased 7.7% while the total dispatched calls for service

	1993	1994	1995	1996	1997
Population Served*	2,386,200	2,389,800	2,419,000	2,446,100	2,490,600
Uniform Strength	5,450	5,287	5,059	4,746	4,940
Uniform Strength /Population	1/438	1/452	1/478	1/515	1/504
Actual Expenditures(Gross)**	538,359,228	513,851,100	513,611,900	509,546,500	522,179,600+
Per Capita Cost	225.61	215.02	212.32	208.31	209.66+

\* Statistics Canada Demographic Division

+ Estimate (based on projected expenditures).

\*\* Actual Expenditure(Net) for 1997 was \$507,955,800

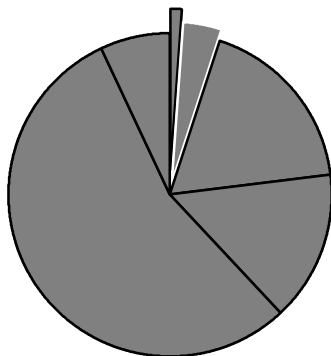
## Gross Operating Budget

Year	Budget (\$)	Change from Previous Year (\$)	% Change from Previous Year
1993	554,601,100	-12,571,500	-2.22
1994*	517,117,100	-37,484,000	-6.76
1995*	514,934,600	-2,182,500	-0.42
1996*	506,645,600	-8,289,000	-1.61
1997*	522,130,600	15,485,000	3.06

\* Net Operating Budget was \$499,841,100.00 for 1994, \$503,541,000.00 for 1995, \$493,841,000 for 1996 and \$508,849,000 for 1997.

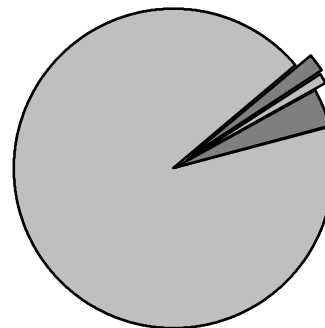
## Operating Budget

### By Appropriation



- 0.59% Board, Chief
- 4.59% Executive Support Command
- 18.63% Administrative Support Command
- 14.71% Operational Support Command
- 54.65% Field Commands
- 6.83% Detective Support Command

### By Feature




- 92.79% Salaries & Fringe Benefits
- 2.22% Materials & Supplies
- 0.72% Equipment
- 4.27% Service & Others

	1993	1994	1995	1996	1997
Chief	1	1	1	1	1
Deputy Chief	3	3	6	6	6
Staff Superintendent	8	6	0	0	0
Superintendent	14	17	6	14	14
Staff Inspector	41	51	42	37	36
Inspector	37	24	12	7	7
Staff Sergeant/Detective Sergeant	265	257	237	195	197
Sergeant/Detective	943	916	863	797	813
Police Constable	4,138	4,012	3,892	3,689	3,866
<b>Total Uniform Strength</b>	<b>5,450</b>	<b>5,287</b>	<b>5,059</b>	<b>4,746</b>	<b>4,940</b>
Chief Administrative Officer- Policing	1	1	1	1	1
Director	6	6	6	4	4
Parking Enforcement Officer	93	257	290	308	261
Court Officer	205	229	246	255	251
Summons Server	16	14	15	14	11
Communications Operator	239	236	241	217	222
Cadet	0	0	0	0	0
Cadets-in-Training	2	0	93	294	54
Custodial Officer	4	5	5	4	5
Other Civilians	1,443	1,275	1,226	1,190	1,226
<b>Total Civilian Strength</b>	<b>2,009</b>	<b>2,023</b>	<b>2,123</b>	<b>2,287</b>	<b>2,035</b>
<b>Grand Total</b>	<b>7,459</b>	<b>7,310</b>	<b>7,182</b>	<b>7,033</b>	<b>6,975</b>

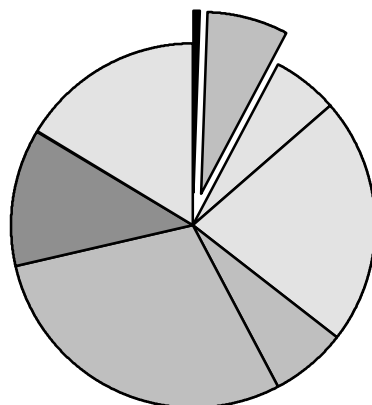
Auxiliary Police	448	394	340	321	294
Temporary Employee	49	73	35	14	22
School Crossing Guard	529	533	676	636	686
Part-time Court Officer	146	151	198	197	191
Part-time Employee - other	49	72	66	64	51

\* As of December 31.

 Includes 18 other volunteers

 Includes spares

**Distribution of Personnel by Branches of the Force**



- 0.50% Board & Chief
- 7.35% Administrative Support Command
- 5.73% Exec. Support Command
- 21.90% Operational Support Command
- 6.75% Detective Support Command
- 29.05% Central Field Command
- 12.22% East Field Command
- 16.50% North-West Field Command

**Personnel by Division And Field Command (Actual)**

	Superintendent and Above	Staff Inspector	Inspector	Staff Sergeant	Detective Sergeant	Sergeant	Detective	Police Constable	Uniform Strength	Civilian Strength	Total Strength	School Crossing Guard
11 Division	0	1	0	4	1	18	7	138	<b>169</b>	<b>10</b>	<b>179</b>	29
12 Division	0	1	1	5	1	13	9	131	<b>161</b>	<b>9</b>	<b>170</b>	43
13 Division	0	1	0	4	2	13	9	144	<b>173</b>	<b>11</b>	<b>184</b>	54
14 Division	1	2	0	5	2	22	28	302	<b>362</b>	<b>20</b>	<b>382</b>	53
51 Division	0	1	1	5	1	16	15	175	<b>214</b>	<b>12</b>	<b>226</b>	24
52 Division	1	2	0	7	3	24	31	307	<b>375</b>	<b>26</b>	<b>401</b>	19
53 Division	0	1	0	5	1	14	9	141	<b>171</b>	<b>9</b>	<b>180</b>	47
55 Division	1	1	0	6	2	18	18	197	<b>243</b>	<b>18</b>	<b>261</b>	62
<b>Central Command*</b>	<b>4</b>	<b>10</b>	<b>2</b>	<b>41</b>	<b>15</b>	<b>139</b>	<b>130</b>	<b>1,566</b>	<b>1,907</b>	<b>119</b>	<b>2,026</b>	<b>331</b>
21 Division	0	1	0	5	0	12	7	80	<b>105</b>	<b>5</b>	<b>110</b>	20
22 Division	0	1	0	4	1	15	11	118	<b>150</b>	<b>10</b>	<b>160</b>	42
23 Division	0	1	0	5	1	14	12	144	<b>177</b>	<b>10</b>	<b>187</b>	43
31 Division	1	1	0	3	1	14	15	206	<b>241</b>	<b>13</b>	<b>254</b>	39
32 Division	1	1	0	6	1	17	16	188	<b>230</b>	<b>11</b>	<b>241</b>	47
33 Division	0	1	0	6	1	13	11	132	<b>164</b>	<b>10</b>	<b>174</b>	37
<b>North West Command*</b>	<b>3</b>	<b>6</b>	<b>0</b>	<b>29</b>	<b>6</b>	<b>87</b>	<b>74</b>	<b>885</b>	<b>1,090</b>	<b>61</b>	<b>1,151</b>	<b>228</b>
41 Division	1	0	1	6	1	20	17	255	<b>301</b>	<b>18</b>	<b>319</b>	51
42 Division	0	1	1	6	2	17	22	264	<b>313</b>	<b>16</b>	<b>329</b>	39
54 Division	0	1	0	4	1	13	10	140	<b>169</b>	<b>11</b>	<b>180</b>	37
<b>East Command*</b>	<b>2</b>	<b>2</b>	<b>2</b>	<b>17</b>	<b>6</b>	<b>50</b>	<b>51</b>	<b>676</b>	<b>806</b>	<b>46</b>	<b>852</b>	<b>127</b>

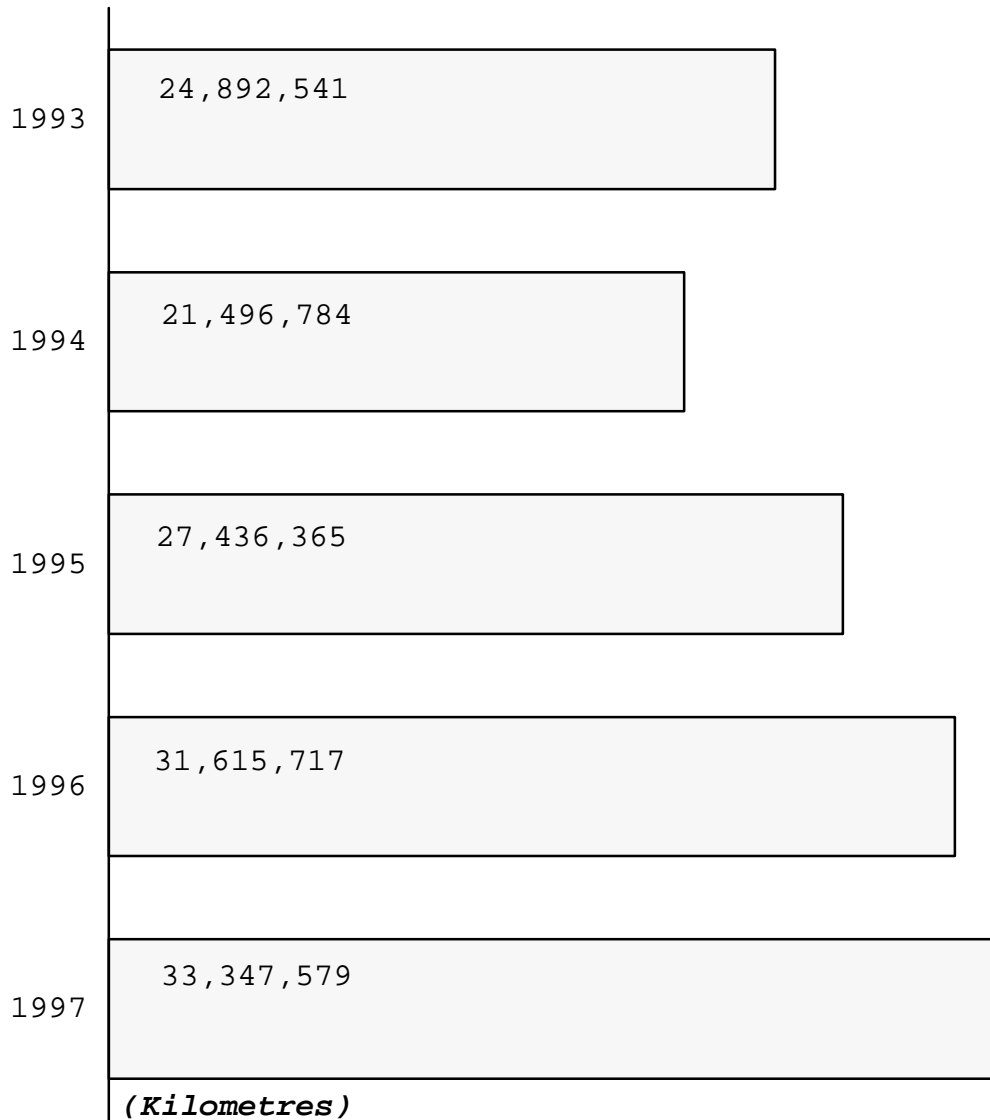
\* Includes those assigned to Command Headquarters.

As of December 31, 1997

Includes spares

	<b>1993</b>	<b>1994</b>	<b>1995</b>	<b>1996</b>	<b>1997</b>
Cars	1,129	1,210	1,128	1,118	1,122
Motorcycles	129	135	133	131	129
Other	172	144	142	145	149
<b>Total Vehicles</b>	<b>1,430</b>	<b>1,489</b>	<b>1,403</b>	<b>1,394</b>	<b>1,400</b>
Boats	17	18	18	18	18
Horses	42	26	25	24	23

**Distance Travelled by Police Vehicles**





## Classification of Incoming Calls

MTPS 1997 Statistical Report

Year	Calls Received at Communications Centre			Dispatched Calls	Resource Centre Calls	Other Calls**
	Emergency	Non-Emergency	Total			
1993	1,137,367	1,370,212	2,507,579	875,547	85,081	1,546,951
1994	1,138,233	1,184,690	2,322,923	796,610	27,939	1,498,374
1995	822,713	1,127,382	1,950,095	715,768	0	1,234,327
1996	813,246	1,064,573	1,877,819	746,135	0	1,131,684
1997	839,366*	894,134□	1,733,500	851,236	0	882,264

\* 9-1-1 Emergency Calls

\*\* Advised, transferred, or no action taken.

□ Includes Non-emergency calls, Alarms, TTC, RIDE program, and other calls which may include Administration, Internal etc.

Note: Resource Centre calls no longer exist from 1995.

Dispatched calls include:

Primary Response only = 507,804(59.66%)

Alternate response = 225,426(26.48%)

Other(Foot Patrol, Accident Units etc.) = 118,006(13.86%)

## Public Complaints\*\*

MTPS 1997 Statistical Report

Complaints Received	1993	1994	1995	1996	1997
Physical Assault	367	284	299	219	169
Police Procedure	413	405	397	132	72
Misuse of Authority	173	196	185	399	342
Verbal Abuse	263	182	201	160	105
<b>Total Complaints Received</b>	<b>1,216</b>	<b>1,067</b>	<b>1,082</b>	<b>910</b>	<b>720*</b>
<b>Percentage change</b>	<b>-4.1</b>	<b>-12.3</b>	<b>+1.4</b>	<b>-15.9</b>	<b>-20.9</b>

\* Includes 32 complaints which are not included in the four (4) general classifications in the table above. These complaints were received after proclamation of amendments to the Police Services Act on November 27, 1997. Eleven (11) of these complaints were classified as serious conduct, twenty (20) as less serious conduct and one (1) as a complaint about service.

### Dispositions:

#### Chief's Decision

No Action Warranted	387	512	308	322	245
Criminal Charges	10	6	3	0	0
Referred to Police Complaint Board	2	4	0	0	0
Disciplinary Charge	14	3	0	7	9
Counsel or Caution	6	2	6	10	1
Frivolous, Vexatious or Bad Faith	102	140	112	127	162

#### Complaints Bureau Dispositions

Informally Resolved	37	26	12	2	3
Withdrawn	475	407	445	364	276
Change to Inquiry	24	51	81	184	219
Six Month Limitation	43	64	57	70	31
Third Party	11	7	13	5	8
Not Within Jurisdiction of the Act/Bureau	13	12	15	33	11

<b>Total Dispositions</b>	<b>1,124</b>	<b>1,234</b>	<b>1,052</b>	<b>1,124</b>	<b>965</b>
---------------------------	--------------	--------------	--------------	--------------	------------

\*\* On November 27, 1997, Bill 105 (RSO) "A Act to review the Partnership between the province, municipalities and the police and to enhance community safety" was proclaimed by the Legislative Assembly. The amendments in Bill 105 revised the Police Services Act and in particular created a new system to deal with the internal discipline and public complaints.

## Community Based and Miscellaneous Policing Statistics

### Community Information/ Crime Prevention - Community Relations

	1993	1994	1995	1996	1997
Communities involved in Neighbourhood Watch	836	881	997	942	956
Homes involved in Neighbourhood Watch	351,307	354,169	372,770	357,852	357,891
Crime Prevention Presentations	1,914	1,950	1,497	1,760	2062☒
Community Relations Presentations	1,808	2,583	2,190	1,844	1665☒
School Safety & Drug Abuse Presentations	19,424	16,912	7,250	☒	☒

### Intelligence Services

Hate/Bias Crime Occurrences	155	249	302	175	187
-----------------------------	-----	-----	-----	-----	-----

### R.I.D.E.(Reduced Impaired Driving Every where) Year Round Statistics - Traffic Services

Vehicles Stopped	303,894	191,287	136,218	117,144	103,695
Charges Laid(Related to impaired driving only)	554	259	302	276	133

### Alarm Program - Communications Support

Valid Alarms	3,668	3,166	3,504	2,879	1,651
False Alarms	48,521	60,438	69,014	57,875	27,981

### Victim Services

Total Incidents	4,033	4,351	4,282	4,129	5,056
Telephone Assisted	3,320	3,824	3,751	3,806	4,587
On Scene	713	527	531	479	469
Domestic Related	2,417	2,492	2,440	2,792	2,794

### Other Programs - Industrial Liaison

Labour disputes attended	28	30	32	31	30
Potential dispute contacts	91	96	94	27	21

<b>Auxiliary Police (Hours Volunteered)</b>	<b>83,710</b>	<b>62,966</b>	<b>43,706</b>	<b>37,914</b>	<b>43,869</b>
---	---------------	---------------	---------------	---------------	---------------

### Crime Stoppers\*

Arrests	235	190	229	273	190
Charges Laid	718	955	702	740	727

\* Metro Toronto statistics only

☒ See 1996 Annual Report. Due to community based policing, new programs were added; some programs consolidated and hence no longer comparable with previous years.

☒ See next page

**COMMUNITY RELATIONS**

Type of Presentation	Number of Presentations	Persons Attending
Speaking engagements	330	17,507
School Lectures	694	25,223
Lectures to Reliefs	203	3,429
Speaking Engagements - Other	438	24,700
<b>Total</b>	<b>1,665</b>	<b>70,859</b>
<b>Miscellaneous</b>		
		<b>Count</b>
Interviews		1,816
Community meetings attended		1,176
Station Tours		511
<b>Presentations</b>		
		<b>Count</b>
Streetproofing		321
Alcohol and Drugs		344
Law		289
Sexual Abuse		57
Abuse of elderly		97
Family violence		114

**CRIME PREVENTION**

Type of Presentation	Number of Presentations	Persons Attending
Neighbourhood Watch	237	9,434
Home security/High-rise security	385	7,679
Office security	282	2,935
Personal safety	401	12,179
Senior citizen safety	223	7,546
Victims of crime	172	1,275
Other	362	22,280
<b>Total</b>	<b>2,062</b>	<b>63,328</b>
Communities involved in Neighbourhood Watch		956
Homes involved in Neighbourhood Watch		357,891
Block Parents screened		469
Banks and Business premises visited		2,409
Insecure premises contacted		136
Serious break and enter call-backs		973
Crime prevention pamphlets distributed		128,388

## General Data by Division and Field Command

	Estimated Population	Area (sqkm)	Projected Expenditures(\$)	Dispatched calls	Motor Vehicles		Bicycles Stolen	Value of Property (\$)*
					Stolen	Recovered		
11 Division	97,926	15.9	12,151,100	39,153	453	315	375	5,381,989
12 Division	92,101	18.5	11,680,100	33,930	465	358	144	4,350,067
13 Division	140,192	19.2	12,067,800	46,470	597	473	445	7,472,158
14 Division	155,761	15.7	26,145,900	76,473	828	595	813	11,016,403
51 Division	64,113	11.4	14,835,200	42,502	392	320	289	6,513,139
52 Division	67,520	12.4	28,593,800	79,849	648	488	904	42,718,416
53 Division	135,628	26.0	12,162,800	38,962	504	346	370	14,990,675
55 Division	118,401	17.0	17,763,000	48,222	682	562	581	6,203,248
<b>Central Command</b>	<b>871,642</b>	<b>136.1</b>	<b>135,399,700</b>	<b>405,561</b>	<b>4,569</b>	<b>3,457</b>	<b>3,921</b>	<b>98,646,095</b>
21 Division	57,033	16.8	7,775,900	19,203	313	250	125	5,237,771
22 Division	133,018	50.1	10,964,200	31,832	819	626	467	8,377,963
23 Division	150,769	56.6	13,146,400	43,161	1,628	1,298	423	14,597,865
31 Division	190,518	47.7	17,053,500	55,136	1,422	1,063	384	13,503,195
32 Division	196,523	62.6	15,880,400	55,174	1,082	729	352	20,450,356
33 Division	184,713	53.0	11,863,800	39,813	878	662	290	10,373,200
<b>North West Command</b>	<b>912,574</b>	<b>286.8</b>	<b>76,684,200</b>	<b>244,319</b>	<b>6,142</b>	<b>4,628</b>	<b>2,041</b>	<b>72,540,350</b>
41 Division	225,048	60.1	21,488,000	70,543	1,471	1,105	309	9,842,500
42 Division	349,079	127.2	22,871,600	76,151	1,710	1,347	873	17,588,680
54 Division	132,289	20.4	12,077,700	41,624	640	523	302	4,898,159
<b>East Command</b>	<b>706,416</b>	<b>207.7</b>	<b>56,437,300</b>	<b>188,318</b>	<b>3,821</b>	<b>2,975</b>	<b>1,484</b>	<b>32,329,339</b>
<b>Metro Total</b>	<b>2,490,632</b>	<b>630.6</b>	<b>265,796,000</b>	<b>851,236</b>	<b>14,532</b>	<b>11,060</b>	<b>7,446</b>	<b>203,515,784</b>

\* Does not include the value of motor vehicles and bicycles, but includes frauds.

☒☒ Includes 13,038 calls handled by units other than divisions such as Foot Patrol, Traffic units etc.

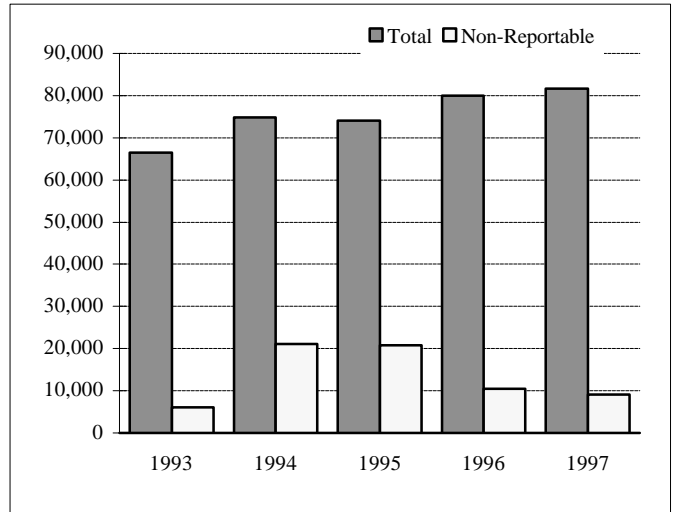
☒ Includes Division totals only.

The grand total gross expenditure of the Service was \$522,179,600.00.

◆ Recovered in 1997 only, and out of stolen in 1997. For example 453 motor vehicles were stolen from 11 division in 1997 and out of which 315 were recovered as of 97/12/31. Recovery statistics *do not* represent the recovery workload of divisions.

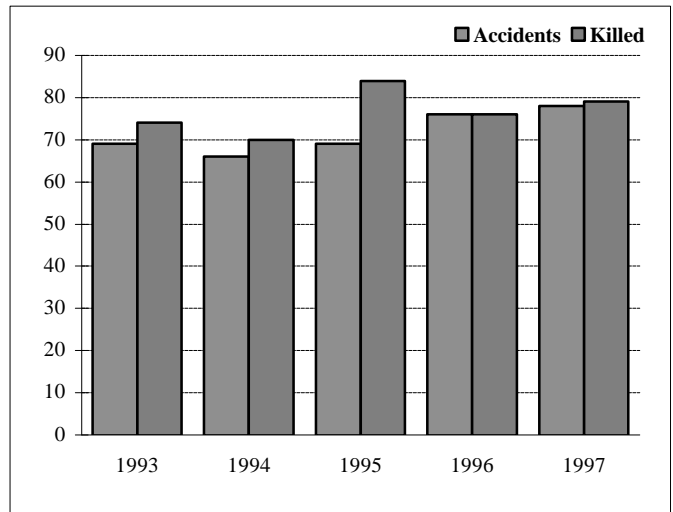
**Total Accidents (Includes Non-Reportable Accidents)**

Year	Total	% Change	Non-Reportable
1993	66,500	+4.4	6,028
1994	74,865	+12.6	21,124
1995	74,137	-1.0	20,839
1996	79,992	+7.9	10,547
<b>1997</b>	<b>81,692</b>	<b>+2.1</b>	<b>9,064</b>



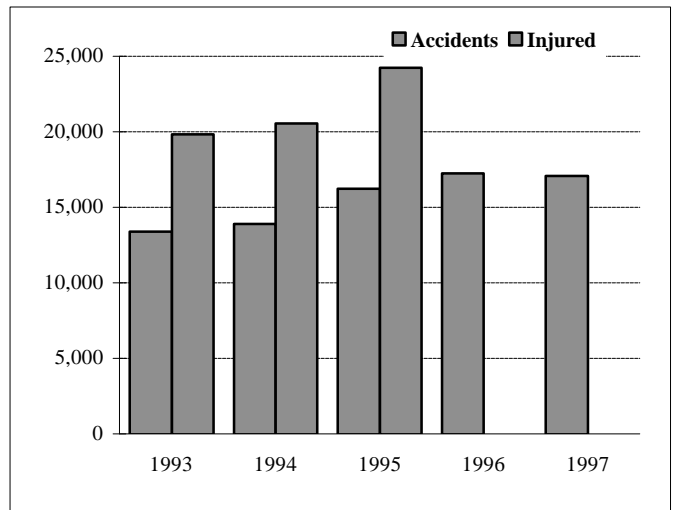
**Fatal Accidents and Persons Killed**

Year	Accidents	% Change	Killed
1993	69	-21.6	74
1994	66	-4.3	70
1995	69	+4.5	84
1996	76	+10.1	76
<b>1997</b>	<b>78</b>	<b>+2.6</b>	<b>79</b>



**Injury Accidents and Persons Injured**

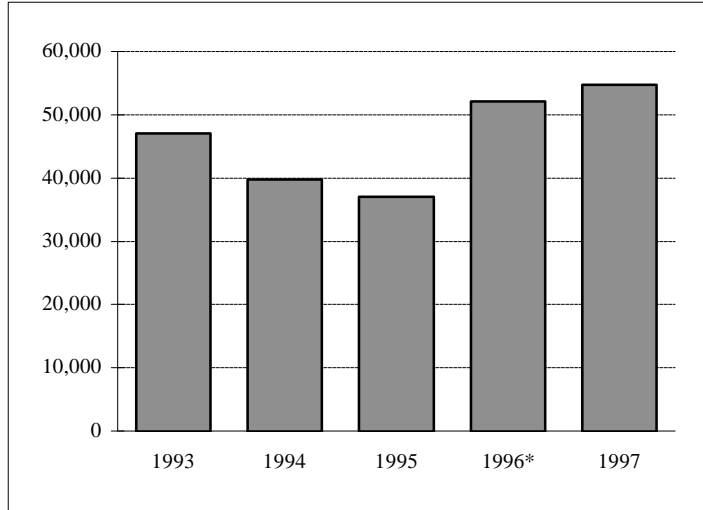
Year	Accidents	% Change	Injured
1993	13,386	+2.1	19,810
1994	13,902	+3.9	20,556
1995	16,247	+16.9	24,255
1996	17,256	+6.2	n/a*
<b>1997</b>	<b>17,091</b>	<b>-1.0</b>	<b>n/a*</b>



\*Figures not available due to changeover to new database

**Property Damage Accidents**

<b>Year</b>	<b>Accidents</b>	<b>% Change</b>
1993	47,017	+3.8
1994	39,773	-15.4
1995	36,982	-7.0
<b>1996*</b>	<b>52,097</b>	<b>40.9</b>
<b>1997</b>	<b>54,787</b>	<b>5.2</b>



\*The sharp increase from 1995 is the result of the change in the method of accident reporting.

**Drinking and Driving Accidents**

<b>Year</b>	<b>Accidents</b>	<b>% Change</b>
1991	2,465	-8.1
1992	2,436	-1.2
1993	2,070	-15.0
1994	1,930	-6.8
1995	1,903	-1.4

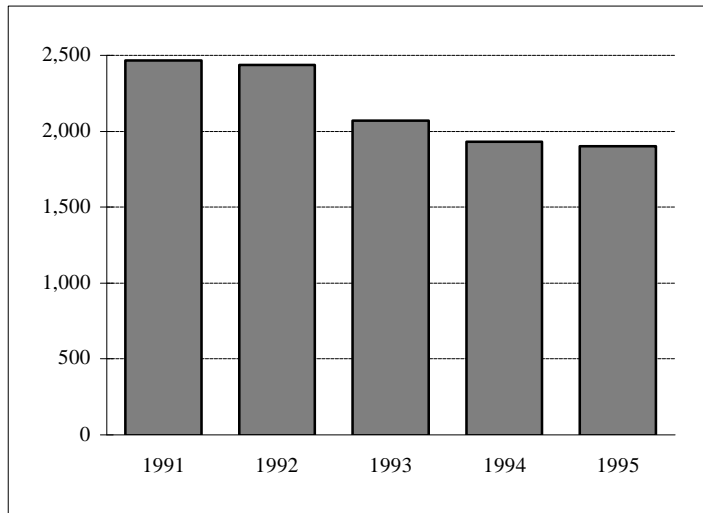


Figure not available from 1996 due to changeover to new database.

**Charges Laid in Accidents\***

<b>Year</b>	<b>Charges</b>	<b>% Change</b>
1991	40,471	-5.5
1992	39,715	-1.9
1993	31,625	-20.4
1994	22,431	-29.1
1995	21,037	-6.2

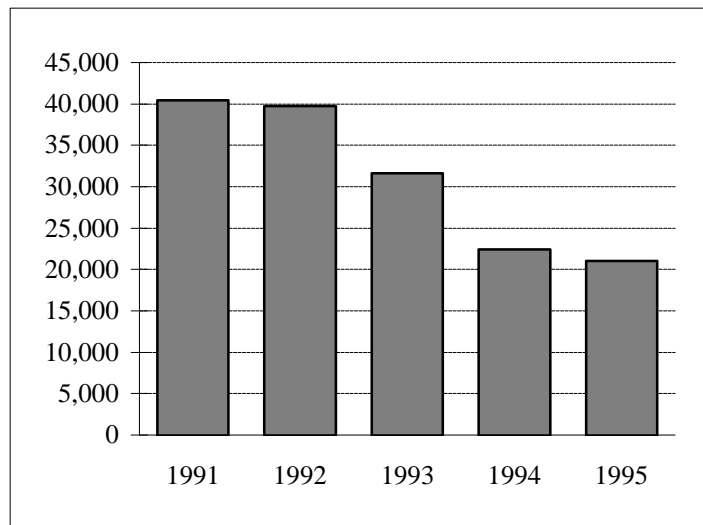
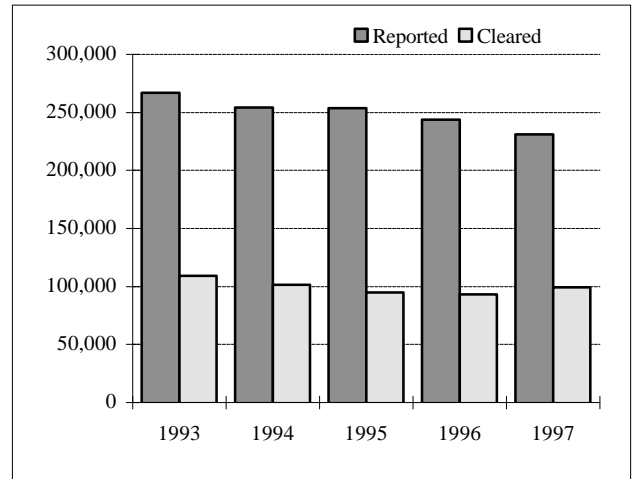


Figure not available from 1996 due to changeover to new database.

\* Includes Non-Reportable accidents

**Total Criminal Code Offences\***

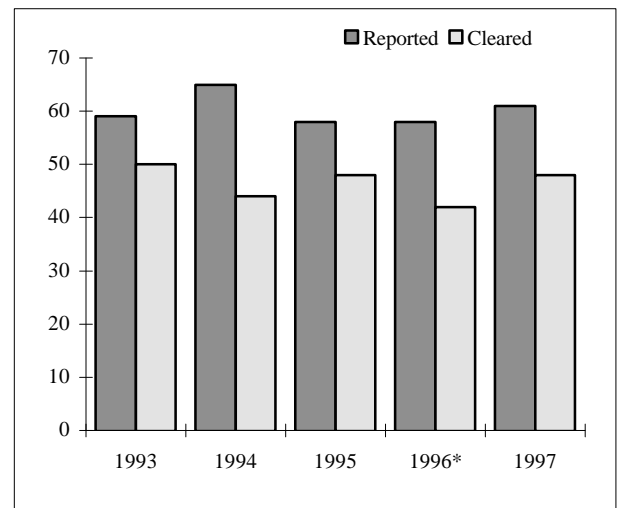
Year	Reported	% Change	Rate per 100,000 of Population	Cleared	% Cleared
1993	266,902	-6.4	11,185.2	109,361	41.0
1994	254,473	-4.7	10,648.3	101,470	39.9
1995	253,517	-0.4	10,480.2	94,700	37.4
1996	243,873	-3.8	9,969.9	93,256	38.2
<b>1997</b>	<b>230,993</b>	<b>-5.3</b>	<b>9,274.5</b>	<b>99,142</b>	<b>42.9</b>



\*Excluding Criminal Code traffic offences. Statistics published prior to 1997 included Criminal Code traffic offences.

**Homicides**

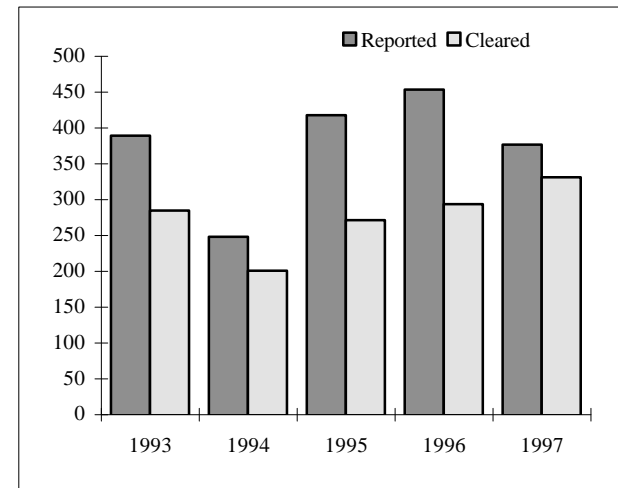
Year	Reported	% Change	Rate per 100,000 of Population	Cleared	% Cleared
1993	59	-9.2	2.5	50	86.2
1994	65	+10.2	2.7	44	67.7
1995	58	-10.8	2.4	48	82.8
1996*	58	-1.7	2.3	42	73.7
<b>1997</b>	<b>61</b>	<b>5.2</b>	<b>2.5</b>	<b>48</b>	<b>78.7</b>



\* Revised

**Robberies (Financial Institutions only)**

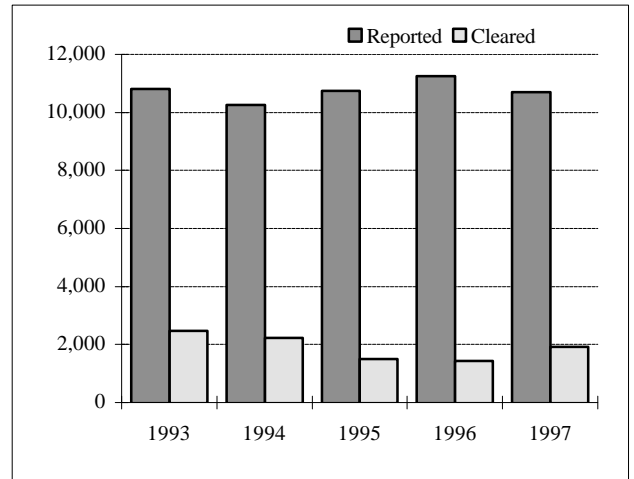
Year	Reported	% Change	Rate per 100,000 of Population	Cleared	% Cleared
1993	389	+31.0	16.3	285	73.3
1994	248	-36.2	10.4	201	81.0
1995	418	+68.5	17.3	271	64.8
1996	454	+8.6	18.6	294	64.8
<b>1997</b>	<b>377</b>	<b>-17.0</b>	<b>15.1</b>	<b>331</b>	<b>87.8</b>





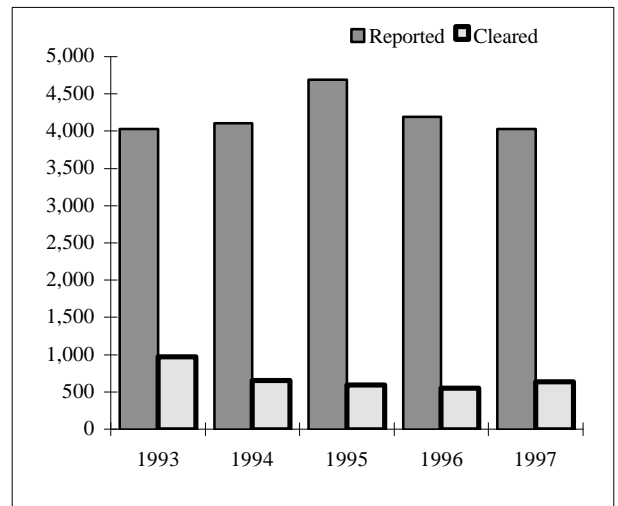
**Break and Enter - Houses**

Year	Reported	% Change	Rate per 100,000 of Population	Cleared	% Cleared
1993	10,810	+0.8	453.0	2,467	22.8
1994	10,268	-5.0	429.7	2,235	21.8
1995	10,740	+4.6	444.0	1,491	13.9
1996	11,254	+4.8	460.1	1,436	12.8
<b>1997</b>	<b>10,704</b>	<b>-4.9</b>	<b>429.8</b>	<b>1,921</b>	<b>17.9</b>



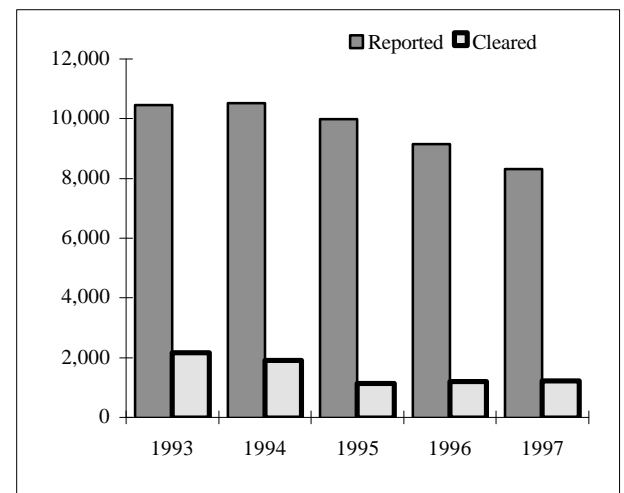
**Break and Enter - Apartments**

Year	Reported	% Change	Rate per 100,000 of Population	Cleared	% Cleared
1993	4,031	-1.4	168.9	970	24.1
1994	4,103	+1.8	171.7	652	15.9
1995	4,694	+14.4	194.1	591	12.6
1996	4,195	-10.6	171.5	551	13.1
<b>1997</b>	<b>4,026</b>	<b>-4.0</b>	<b>161.7</b>	<b>638</b>	<b>15.8</b>



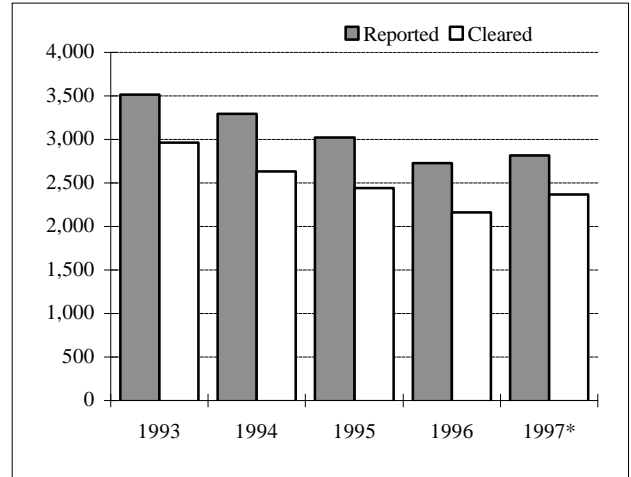
**Break and Enter - Business Premises**

Year	Reported	% Change	Rate per 100,000 of Population	Cleared	% Cleared
1993	10,455	-10.5	438.1	2,174	20.8
1994	10,518	+0.6	440.1	1,911	18.2
1995	9,982	-5.1	412.7	1,131	11.3
1996	9,150	-8.3	374.1	1,192	13.0
<b>1997</b>	<b>8,319</b>	<b>-9.1</b>	<b>334.0</b>	<b>1,232</b>	<b>14.8</b>



**Sexual Assaults**

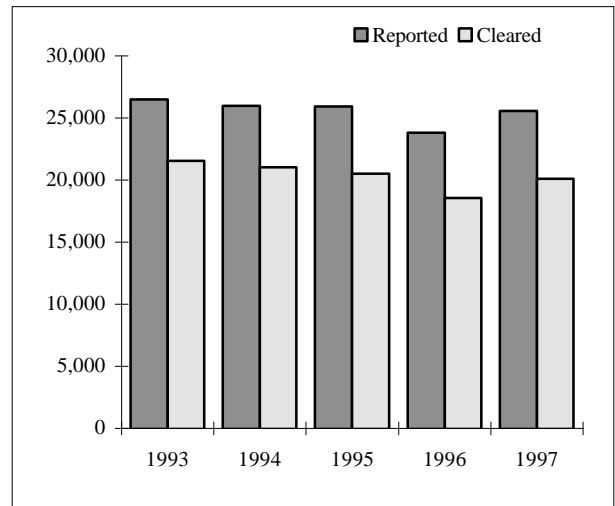
Year	Reported	% Change	Rate per 100,000 of Population	Cleared	% Cleared
1993	3,517	+3.9	147.4	2,961	84.2
1994	3,291	-6.4	137.7	2,636	80.1
1995	3,022	-8.2	124.9	2,444	80.9
1996	2,725	-9.8	111.4	2,164	79.4
<b>1997*</b>	<b>2,818</b>	<b>+3.4</b>	<b>113.1</b>	<b>2,364</b>	<b>83.9</b>



\* Includes 516 "non-assaultive" sexual offences(e.g. Invitation to Sexual Touching; Sexual Exploitation etc.)

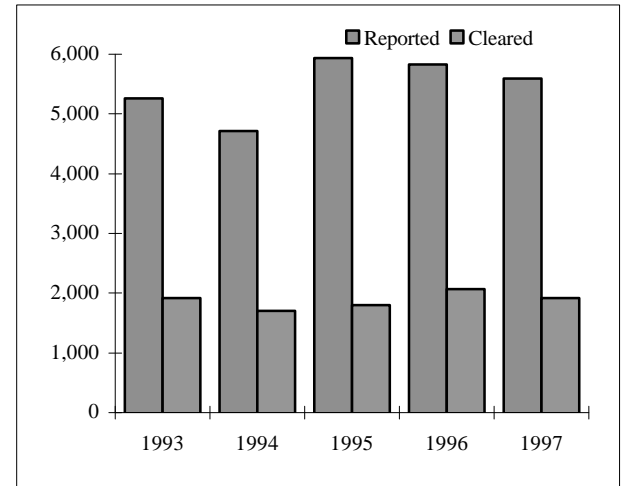
**Non-Sexual Assaults**

Year	Reported	% Change	Rate per 100,000 of Population	Cleared	% Cleared
1993	26,513	+3.2	1,111.1	21,558	81.3
1994	25,964	-2.1	1,086.5	21,049	81.1
1995	25,949	-0.1	1,072.7	20,506	79.0
1996	23,833	-8.2	974.3	18,576	77.9
<b>1997</b>	<b>25,568</b>	<b>+7.3</b>	<b>1,026.6</b>	<b>20,082</b>	<b>78.5</b>



**Robberies (Including financial institution)**

Year	Reported	% Change	Rate per 100,000 of Population	Cleared	% Cleared
1993	5,265	+0.2	220.6	1,918	36.4
1994	4,719	-10.4	197.5	1,700	36.0
1995	5,938	+25.8	245.5	1,800	30.3
1996	5,833	-1.8	238.5	2,063	35.4
<b>1997</b>	<b>5,593</b>	<b>-4.1</b>	<b>224.6</b>	<b>1,920</b>	<b>34.3</b>



**VIOLENT CRIME, PROPERTY CRIME, OTHER CRIME AND CRIMINAL CODE TRAFFIC OFFENCES**

YEAR	VIOLENT CRIME†			PROPERTY CRIME			OTHER CRIME			CRIMINAL CODE TRAFFIC OFFENCES**			TOTAL CRIMINAL CODE OFFENCES		
	OFFENCE	CHANGE %	CLEAR* %	OFFENCE	CHANGE %	CLEAR* %	OFFENCE	CHANGE %	CLEAR* %	OFFENCE	CHANGE %	CLEAR* %	OFFENCE	CHANGE %	CLEAR* %
1993	36,021	2.8	75.0	154,558	-8.2	26.2	76,323	-6.8	54.8	27,438	8.9	41.2	294,340	-5.2	41.0
1994	34,750	-3.5	74.8	146,712	-5.1	23.4	73,011	-4.3	56.3	27,427	0.0	39.4	281,900	-4.2	39.8
1995	35,506	2.2	71.1	145,385	-0.9	21.0	72,626	-0.5	53.6	24,143	-12.0	42.7	277,660	-1.5	37.8
1996	33,069	-6.9	70.6	144,600	-0.5	22.3	66,203	-8.8	56.8	13,893	-42.5	52.0	257,765	-7.2	39.0
1997	34,663	4.8	71.8	133,775	-7.5	25.9	62,555	-5.5	63.3	3,818	-72.5	99.6	234,811	-8.9	43.8

\* Clearance rate

\*\* 1996 figure includes 'Fail to remain' offences for about six months.

1997 figure does not include 'Fail to remain' offences.

All other years include complete 'Fail to remain' offences.

**Categories of Crime:**

- (1) **Violent crime** includes homicide and homicide related offences, sexual assaults, sexual offences, non-sexual assaults, abduction, and robberies.
- (2) **Property crime** includes break and enter, all types of thefts, possession of stolen goods, and fraud.
- (3) **Other crime** includes all other Criminal Code offences that are classified as non-traffic and neither (1) nor (2).
- (4) **Traffic offences** include all Criminal Code traffic offences.
- (5) **Total Criminal Code offences** include all the above four categories.



The definition for violent crime was revised in 1996.

Statistics published prior to 1996 included weapons offences in 'Violent Crime'.

Starting from 1996 publication, weapons offences are included in 'Other Crime'.

Statistics for years prior to 1996 were revised accordingly.

**VIOLENT CRIME, PROPERTY CRIME, OTHER CRIME AND CRIMINAL CODE TRAFFIC OFFENCES 1997 Statistical Report**

UNIT	VIOLENT CRIME			PROPERTY CRIME			OTHER CRIME			CRIMINAL CODE TRAFFIC OFFENCES**			TOTAL CRIMINAL CODE OFFENCES		
	OFFENCE	RATE*	CLEAR %	OFFENCE	RATE*	CLEAR %	OFFENCE	RATE*	CLEAR %	OFFENCE	RATE*	CLEAR %	OFFENCE	RATE*	CLEAR %
11	1,477	1,508	76.0	4,495	4,591	28.0	3,005	3,069	65.4	268	274	99.3	9,245	9,442	49.9
12	1,944	2,111	74.9	3,837	4,166	26.2	2,378	2,582	64.2	175	190	98.3	8,334	9,049	50.0
13	1,593	1,136	71.6	5,812	4,146	15.3	2,540	1,812	48.8	189	135	100.0	10,134	7,229	34.1
14	3,530	2,266	72.1	10,123	6,499	22.0	4,830	3,101	59.9	400	257	99.5	18,883	12,123	42.7
21	863	1,513	80.4	2,279	3,996	31.4	1,583	2,776	80.9	199	349	100	4,924	8,634	58.7
22	979	736	72.2	6,103	4,588	20.4	2,988	2,246	58.6	262	197	99.6	10,332	7,767	38.3
23	2,172	1,441	66.6	8,656	5,741	19.5	2,815	1,867	47.3	261	173	100.4	13,904	9,222	34.0
31	2,636	1,384	66.5	8,875	4,658	18.3	3,836	2,013	45.6	248	130	99.6	15,595	8,186	34.5
32	1,538	783	73.7	9,614	4,892	23.8	3,899	1,984	55.3	234	119	100.4	15,285	7,778	38.0
33	1,162	629	85.5	6,221	3,368	35.3	2,463	1,333	56.3	107	58	98.1	9,953	5,388	47.0
41	3,315	1,473	74.0	10,216	4,539	27.5	5,890	2,617	65.7	395	176	99.7	19,816	8,805	48.1
42	3,337	956	69.5	12,941	3,707	42.7	5,419	1,552	84.2	230	66	100.0	21,927	6,281	57.6
51	2,231	3,480	69.7	5,679	8,859	29.4	4,338	6,766	81.2	136	212	99.3	12,384	19,316	55.6
52	2,896	4,289	63.3	21,219	31,426	25.8	8,341	12,353	73.8	209	310	98.6	32,665	48,378	41.8
53	919	678	68.4	5,894	4,346	15.6	1,817	1,340	43.1	84	62	98.8	8,714	6,425	27.7
54	1,776	1,343	74.8	4,574	3,458	20.7	2,678	2,024	53.0	195	147	100.0	9,223	6,972	42.2
55	2,295	1,938	78.0	7,237	6,111	29.5	3,735	3,155	54.1	226	191	100.0	13,493	11,395	45.7
<b>METRO</b>	<b>34,663</b>	<b>1,392</b>	<b>71.8</b>	<b>133,775</b>	<b>5,371</b>	<b>25.9</b>	<b>62,555</b>	<b>2,512</b>	<b>63.3</b>	<b>3,818</b>	<b>153</b>	<b>99.6</b>	<b>234,811</b>	<b>9,428</b>	<b>43.8</b>

**Categories of Crime:**

- (1) **Violent crime** includes homicide and homicide related offences, sexual assaults, sexual offences, non-sexual assaults, abduction, and robberies.
- (2) **Property crime** includes break and enter, all types of thefts, possession of stolen goods, and fraud.
- (3) **Other crime** includes all other Criminal Code offences that are classified as non-traffic and neither (1) nor (2).
- (4) **Traffic offences** include all Criminal Code traffic offences.
- (5) **Total Criminal Code offences** include all the above four categories.

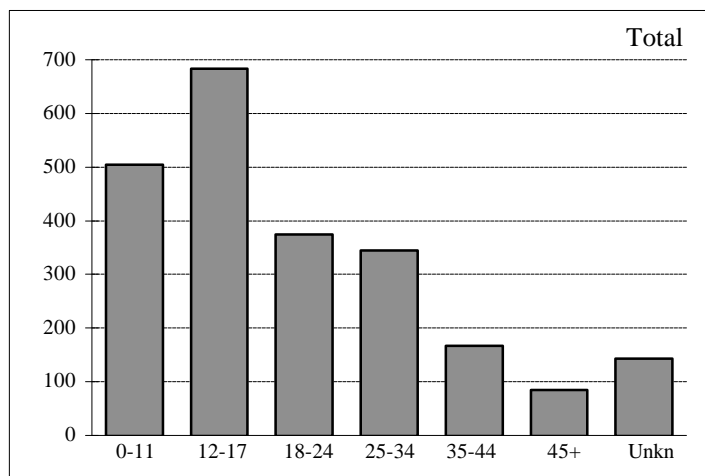
\*\* Does not include 'Fail to remain' offences.

Note: Cleared cases may include offences committed before 1997.

*\* Rate per 100,000 of population  
No allowance was given to  
transient or commuting population.*

## Sexual Assaults\*

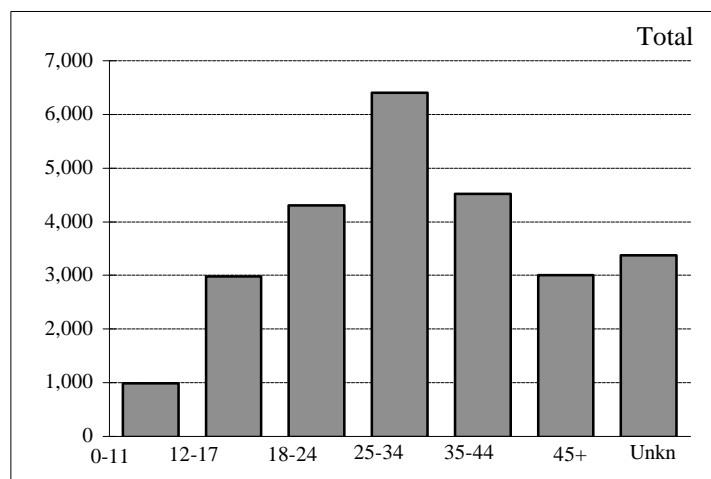
Age	Males	Females	Total	% of Total
0-11	133	372	<b>505</b>	21.94
12-17	82	601	<b>683</b>	29.67
18-24	26	348	<b>374</b>	16.25
25-34	23	322	<b>345</b>	14.99
35-44	14	153	<b>167</b>	7.25
45+	4	81	<b>85</b>	3.69
Unkn	13	130	<b>143</b>	6.21
<b>Total</b>	<b>295</b>	<b>2,007</b>	<b>2,302</b>	100.00



\*Includes all types of Sexual Assaults, but excludes 516 Sexual Offences included on page 14.

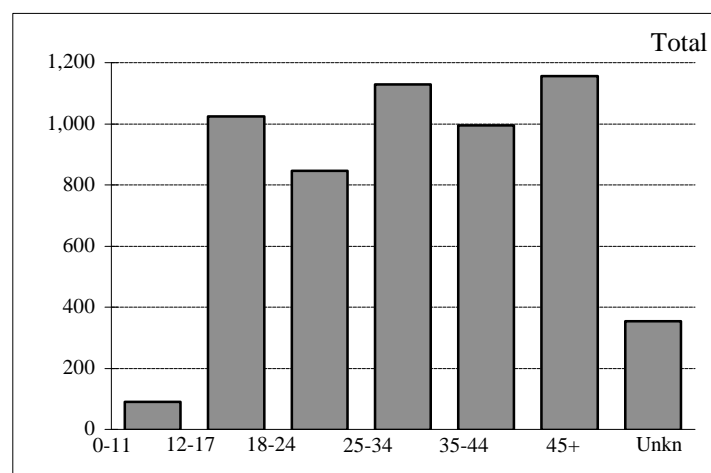
## Non-Sexual Assaults

Age	Males	Females	Total	% of Total
0-11	604	380	<b>984</b>	3.85
12-17	1,683	1,301	<b>2,984</b>	11.67
18-24	2,003	2,302	<b>4,305</b>	16.84
25-34	3,061	3,344	<b>6,405</b>	25.05
35-44	2,298	2,216	<b>4,514</b>	17.65
45+	1,648	1,354	<b>3,002</b>	11.74
Unkn	2,146	1,228	<b>3,374</b>	13.20
<b>Total</b>	<b>13,443</b>	<b>12,125</b>	<b>25,568</b>	100.00



## Robberies

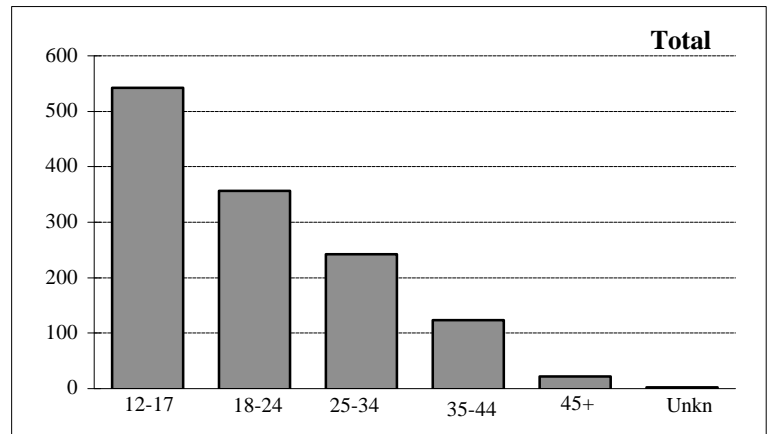
Age	Males	Females	Total	% of Total
0-11	77	13	<b>90</b>	1.61
12-17	862	163	<b>1,025</b>	18.33
18-24	570	276	<b>846</b>	15.13
25-34	716	413	<b>1,129</b>	20.19
35-44	626	369	<b>995</b>	17.79
45+	571	584	<b>1,155</b>	20.65
Unkn	216	137	<b>353</b>	6.31
<b>Total</b>	<b>3,638</b>	<b>1,955</b>	<b>5,593</b>	100.00



# Persons Charged by Age and Sex

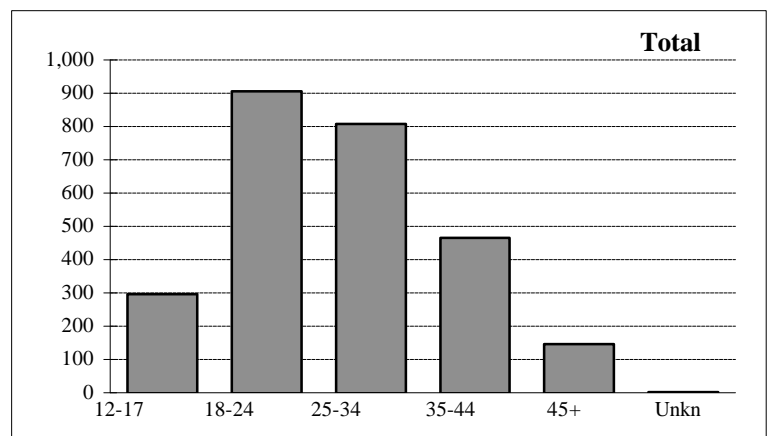
## Robberies

Age	Males	Females	Total	% of Total
12-17	487	55	<b>542</b>	42.08
18-24	325	31	<b>356</b>	27.64
25-34	204	38	<b>242</b>	18.79
35-44	104	20	<b>124</b>	9.63
45+	19	3	<b>22</b>	1.71
Unkn	2	0	<b>2</b>	0.16
<b>Total</b>	<b>1,141</b>	<b>147</b>	<b>1,288</b>	100.00



## Drug Offences\*

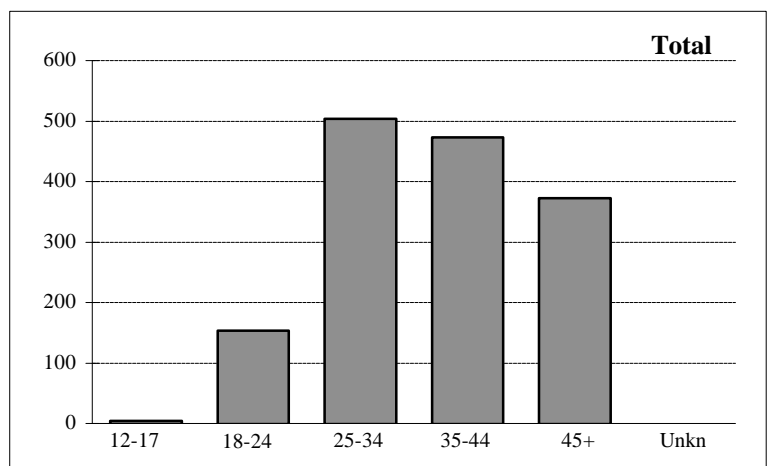
Age	Males	Females	Total	% of Total
12-17	265	31	<b>296</b>	11.29
18-24	820	86	<b>906</b>	34.55
25-34	688	119	<b>807</b>	30.78
35-44	388	78	<b>466</b>	17.77
45+	125	21	<b>146</b>	5.57
Unkn	1	0	<b>1</b>	0.04
<b>Total</b>	<b>2,287</b>	<b>335</b>	<b>2,622</b>	100.00



\* Includes Food & Drug Act and Narcotic Control Act

## Drinking and Driving Offences

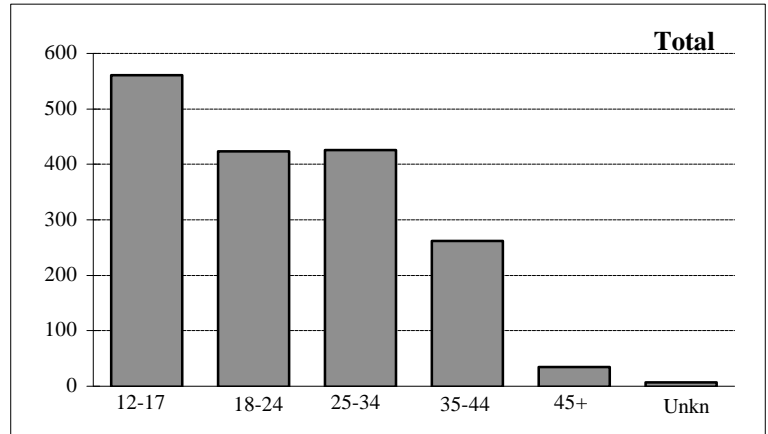
Age	Males	Females	Total	% of Total
12-17	3	1	<b>4</b>	0.27
18-24	149	4	<b>153</b>	10.15
25-34	471	33	<b>504</b>	33.44
35-44	425	48	<b>473</b>	31.39
45+	341	32	<b>373</b>	24.75
Unkn	0	0	<b>0</b>	0.00
<b>Total</b>	<b>1,389</b>	<b>118</b>	<b>1,507</b>	100.00



# Persons Charged by Age and Sex

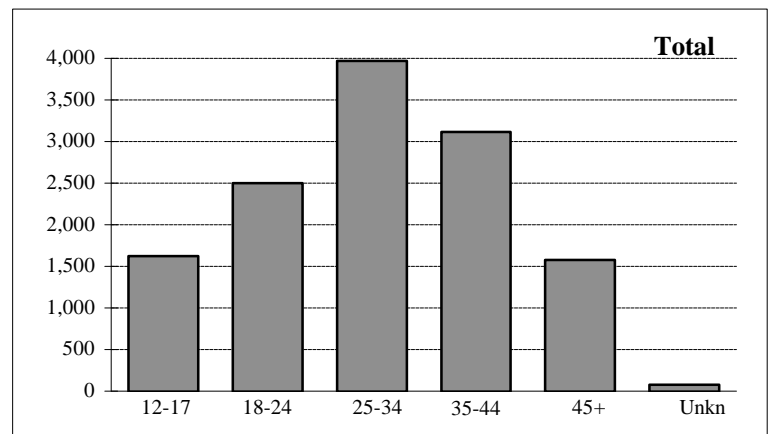
## Break and Enters

Age	Males	Females	Total	% of Total
12-17	514	47	<b>561</b>	32.71
18-24	407	17	<b>424</b>	24.72
25-34	396	30	<b>426</b>	24.84
35-44	246	16	<b>262</b>	15.28
45+	34	1	<b>35</b>	2.04
Unkn	7	0	<b>7</b>	0.41
<b>Total</b>	<b>1,604</b>	<b>111</b>	<b>1,715</b>	100.00



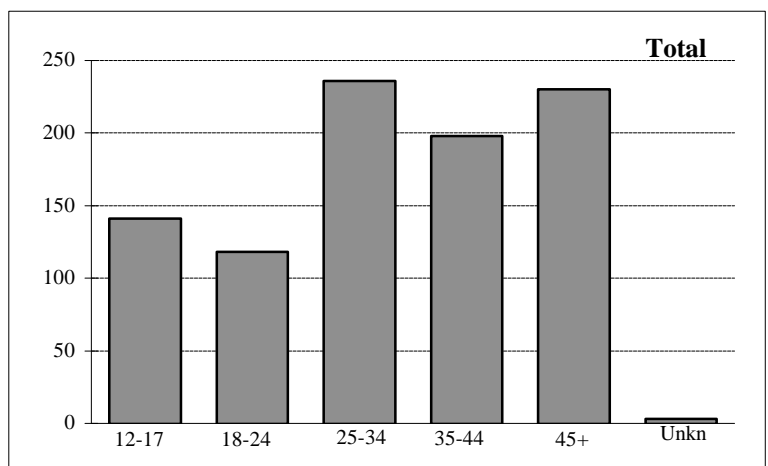
## Non-Sexual Assaults

Age	Males	Females	Total	% of Total
12-17	1,143	482	<b>1,625</b>	12.63
18-24	2,098	405	<b>2,503</b>	19.45
25-34	3,319	653	<b>3,972</b>	30.87
35-44	2,626	488	<b>3,114</b>	24.20
45+	1,331	245	<b>1,576</b>	12.25
Unkn	58	20	<b>78</b>	0.61
<b>Total</b>	<b>10,575</b>	<b>2,293</b>	<b>12,868</b>	100.00



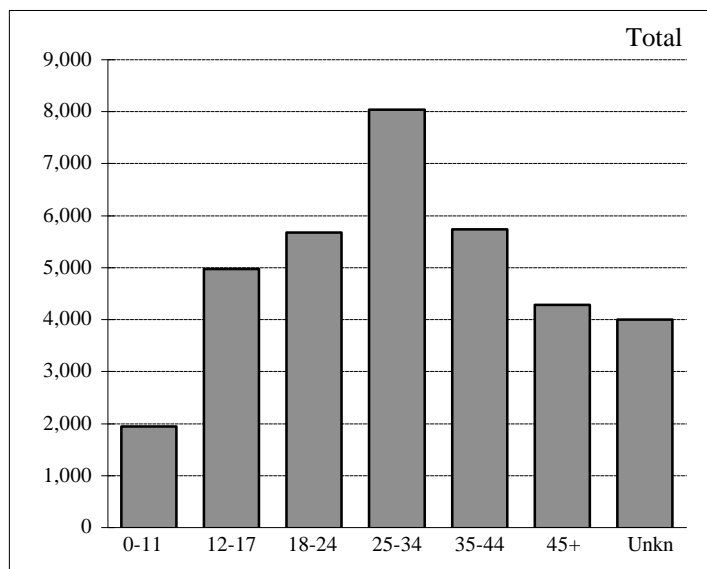
## Sexual Assaults

Age	Males	Females	Total	% of Total
12-17	140	1	<b>141</b>	15.23
18-24	116	2	<b>118</b>	12.74
25-34	231	5	<b>236</b>	25.49
35-44	193	5	<b>198</b>	21.38
45+	230	0	<b>230</b>	24.84
Unkn	3	0	<b>3</b>	0.32
<b>Total</b>	<b>913</b>	<b>13</b>	<b>926</b>	100.00



## Violent Crime\*

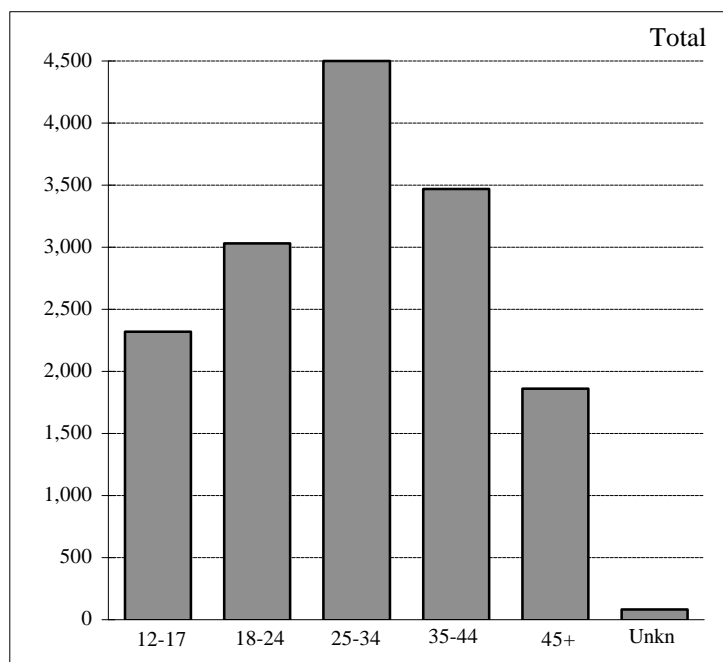
Age	Males	Females	Total	% of Total
0-11	924	1027	<b>1,951</b>	5.63
12-17	2,681	2291	<b>4,972</b>	14.34
18-24	2,668	3012	<b>5,680</b>	16.39
25-34	3,867	4168	<b>8,035</b>	23.18
35-44	2,958	2780	<b>5,738</b>	16.55
45+	2,243	2044	<b>4,287</b>	12.37
Unkn	2,432	1568	<b>4,000</b>	11.54
<b>Total</b>	<b>17,773</b>	<b>16,890</b>	<b>34,663</b>	100.00



\* **Violent crime** includes homicide and homicide related offences, sexual assaults, sexual offences, non-sexual assaults, abduction, and robberies.

## Persons charged for violent crime

Age	Males	Females	Total	% of Total
12-17	1,783	539	<b>2,322</b>	15.21
18-24	2,589	440	<b>3,029</b>	19.85
25-34	3,802	698	<b>4,500</b>	29.48
35-44	2,951	517	<b>3,468</b>	22.72
45+	1,612	249	<b>1,861</b>	12.19
Unkn	63	20	<b>83</b>	0.54
<b>Total</b>	<b>12,800</b>	<b>2,463</b>	<b>15,263</b>	100.00

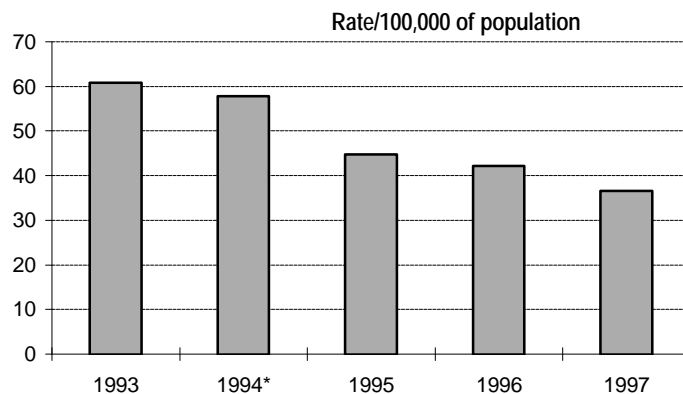




# Selected Offences Against Police Officers

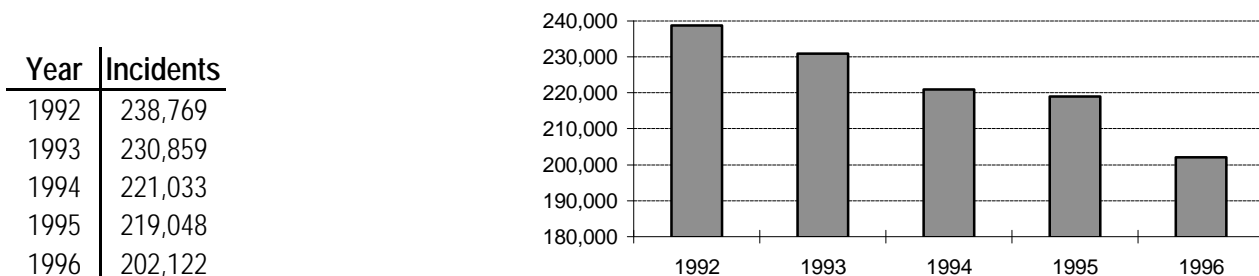
	1993	1994	1995	1996	1997
Murder	0	1	0	0	0
Attempted Murder	10	8	8	4	3
Aggravated Assault	0	3	5	4	2
Assault With Weapon or Causing Bodily Harm	77	69	70	74	55
Assault	286	283	195	144	126
Assault Police Officer	519	474	393	442	383
Assault to Resist Arrest	513	515	399	352	332
Attempt to choke, strangle, etc.	1	1	1	0	1
Point/dangerous use of firearm	26	22	10	4	4
Discharge firearm with intent to wound	1	0	0	0	0
Discharge firearm with intent to endanger life	1	0	0	0	0
Discharge firearm with intent to prevent arrest	2	0	0	1	0
Dangerous operation of a motor vehicle causing bodily harm	16	5	2	8	4
<b>Total offences</b>	<b>1,452</b>	<b>1,381</b>	<b>1,083</b>	<b>1,033</b>	<b>910</b>

Year	No: of Offences	Rate/100,000 Population	Variance in Rate(%)
1993	1452	60.85	-8.73
1994*	1381	57.79	-5.03
1995	1083	44.77	-22.53
1996	1033	42.23	-5.67
1997	910	36.54	-13.48



\* 1 murder

## Incidents as Reported to Statistics Canada\*



\* Total Criminal Code(C.C.), excluding C. C. Traffic incidents. Figures published in earlier years included all incidents excluding C.C. Traffic incidents.  
 Value for 1997 is not available from Statistics Canada at press time; the 1998 annual report will contain this information.

# Criminal Code Offences Reported and Cleared\*- Field Command and Metro Totals

	First Degree Murder	Second Degree Murder	Manslaughter	Attempted Murder	Sexual Assault	Other Assault	Robbery	Break and Enter	Theft of Motor Vehicle**	Theft Over \$5,000	Theft Under \$5,000	Fraud	Offensive Weapons offences	Other Criminal Code	Total Criminal Code Non-Traffic	Criminal Code Traffic	Total Criminal Code
--	---------------------	----------------------	--------------	------------------	----------------	---------------	---------	-----------------	--------------------------	--------------------	---------------------	-------	----------------------------	---------------------	---------------------------------	-----------------------	---------------------

Central Command	Reported	17	11	0	52	1,088	12,509	2,715	10,021	5,133	1,314	40,425	4,265	1,741	32,874	<b>112,165</b>	<b>1,687</b>	<b>113,852</b>
	Cleared	12	10	0	43	862	9,699	996	1,701	619	171	6,889	3,096	1,672	21,995	<b>47,765</b>	<b>1,675</b>	<b>49,440</b>
	% Cleared	70.6	90.9	0.0	82.7	79.2	77.5	36.7	17.0	12.1	13.0	17.0	72.6	96.0	66.9	<b>42.6</b>	<b>99.3</b>	<b>43.4</b>

North West Command	Reported	14	7	2	55	619	6,939	1,496	7,306	7,179	768	22,060	2,657	825	18,755	<b>68,682</b>	<b>1,311</b>	<b>69,993</b>
	Cleared	11	8	2	39	498	5,489	492	1,296	787	97	4,098	1,703	774	10,844	<b>26,138</b>	<b>1,309</b>	<b>27,447</b>
	% Cleared	78.6	114.3	100.0	70.9	80.5	79.1	32.9	17.7	11.0	12.6	18.6	64.1	93.8	57.8	<b>38.1</b>	<b>99.8</b>	<b>39.2</b>

East Command	Reported	6	3	1	38	595	6,120	1,382	5,757	4,481	371	14,521	1,427	895	14,549	<b>50,146</b>	<b>820</b>	<b>50,966</b>
	Cleared	1	3	1	24	501	4,894	432	802	528	96	5,765	927	846	10,419	<b>25,239</b>	<b>819</b>	<b>26,058</b>
	% Cleared	16.7	100.0	100.0	63.2	84.2	80.0	31.3	13.9	11.8	25.9	39.7	65.0	94.5	71.6	<b>50.3</b>	<b>99.9</b>	<b>51.1</b>

Metro Total	Reported	37	21	3	145	2,302	25,568	5,593	23,084	16,793	2,453	77,006	8,349	3,461	66,178	<b>230,993</b>	<b>3,818</b>	<b>234,811</b>
	Cleared	24	21	3	106	1,861	20,082	1,920	3,799	1,934	364	16,752	5,726	3,292	43,258	<b>99,142</b>	<b>3,803</b>	<b>102,945</b>
	% Cleared	64.9	100.0	100.0	73.1	80.8	78.5	34.3	16.5	11.5	14.8	21.8	68.6	95.1	65.4	<b>42.9</b>	<b>99.6</b>	<b>43.8</b>

\* Cleared cases may include offences reported prior to 1997.

\*\* Include motor cycle and snow vehicle and all attempts.

☐ Statistics do not include 'Fail to Remain' violations.

# Criminal Code Offences Reported and Cleared\*- Central Field Command

MTPS 1997 Statistical Report

	First Degree Murder	Second Degree Murder	Manslaughter	Attempted Murder	Sexual Assault	Other Assault	Robbery	Break and Enter	Theft of Motor Vehicle**	Theft Over \$5,000	Theft Under \$5,000	Fraud	Offensive Weapons Offences	Other Criminal Code	Total Criminal Code Non-Traffic	Criminal Code Traffic□	Total Criminal Code
--	---------------------	----------------------	--------------	------------------	----------------	---------------	---------	-----------------	--------------------------	--------------------	---------------------	-------	----------------------------	---------------------	---------------------------------	------------------------	---------------------

11 Division	Reported	1	0	0	3	119	1,108	205	805	493	41	2,699	271	132	3,100	<b>8,977</b>	<b>268</b>	<b>9,245</b>
	Cleared	2	1	0	3	92	906	83	454	59	12	408	144	126	2,059	<b>4,349</b>	<b>266</b>	<b>4,615</b>
	% Cleared	200.0	0.0	0.0	100.0	77.3	81.8	40.5	56.4	12.0	29.3	15.1	53.1	95.5	66.4	<b>48.4</b>	<b>99.3</b>	<b>49.9</b>

12 Division	Reported	0	3	0	5	123	1,527	227	726	523	53	2,082	252	197	2,441	<b>8,159</b>	<b>175</b>	<b>8,334</b>
	Cleared	0	0	0	5	96	1,232	73	113	58	7	485	145	183	1,594	<b>3,991</b>	<b>172</b>	<b>4,163</b>
	% Cleared	0.0	0.0	0.0	100.0	78.0	80.7	32.2	15.6	11.1	13.2	23.3	57.5	92.9	65.3	<b>48.9</b>	<b>98.3</b>	<b>50.0</b>

13 Division	Reported	2	0	0	3	97	1,218	233	1,374	689	70	3,081	339	107	2,732	<b>9,945</b>	<b>189</b>	<b>10,134</b>
	Cleared	1	0	0	2	80	959	65	116	60	6	250	198	102	1,429	<b>3,268</b>	<b>189</b>	<b>3,457</b>
	% Cleared	50.0	0.0	0.0	66.7	82.5	78.7	27.9	8.4	8.7	8.6	8.1	58.4	95.3	52.3	<b>32.9</b>	<b>100.0</b>	<b>34.1</b>

14 Division	Reported	2	2	0	12	215	2,742	470	1,928	902	128	6,232	451	302	5,097	<b>18,483</b>	<b>400</b>	<b>18,883</b>
	Cleared	1	3	0	11	175	2,109	170	249	133	12	1,076	283	284	3,162	<b>7,668</b>	<b>398</b>	<b>8,066</b>
	% Cleared	50.0	150.0	0.0	91.7	81.4	76.9	36.2	12.9	14.7	9.4	17.3	62.7	94.0	62.0	<b>41.5</b>	<b>99.5</b>	<b>42.7</b>

51 Division	Reported	7	1	0	18	155	1,484	469	1,051	424	98	3,621	173	312	4,435	<b>12,248</b>	<b>136</b>	<b>12,384</b>
	Cleared	4	1	0	12	131	1,148	166	209	60	19	972	103	304	3,620	<b>6,749</b>	<b>135</b>	<b>6,884</b>
	% Cleared	57.1	100.0	0.0	66.7	84.5	77.4	35.4	19.9	14.2	19.4	26.8	59.5	97.4	81.6	<b>55.1</b>	<b>99.3</b>	<b>55.6</b>

\* Cleared cases may include offences reported prior to 1997.

\*\* Include motor cycle and snow vehicle and all attempts.

□ Statistics do not include 'Fail to Remain' violations.

24 Criminal Code Offences Reported and Cleared\*- Central Field Command(Cont'd)

MTPS 1997 Statistical Report

	First Degree Murder	Second Degree Murder	Manslaughter	Attempted Murder	Sexual Assault	Other Assault	Robbery	Break and Enter	Theft of Motor Vehicle**	Theft Over \$5,000	Theft Under \$5,000	Fraud	Offensive Weapons Offences	Other Criminal Code	Total Criminal Code Non-Traffic	Criminal Code Traffic	Total Criminal Code
--	---------------------	----------------------	--------------	------------------	----------------	---------------	---------	-----------------	--------------------------	--------------------	---------------------	-------	----------------------------	---------------------	---------------------------------	-----------------------	---------------------

52 Division	Reported	3	0	0	4	186	2,026	607	1,653	674	748	14,993	2,058	419	9,085	<b>32,456</b>	209	32,665
	Cleared	3	0	0	4	133	1,408	219	199	103	84	2,274	1,732	414	6,888	<b>13,461</b>	206	13,667
	% Cleared	100.0	0.0	0.0	100.0	71.5	69.5	36.1	12.0	15.3	11.2	15.2	84.2	98.8	75.8	<b>41.5</b>	98.6	41.8

53 Division	Reported	1	4	0	2	58	662	173	1,114	585	115	3,628	348	57	1,883	<b>8,630</b>	84	8,714
	Cleared	0	4	0	1	45	476	82	79	58	20	416	245	54	855	<b>2,335</b>	83	2,418
	% Cleared	0.0	100.0	0.0	50.0	77.6	71.9	47.4	7.1	9.9	17.4	11.5	70.4	94.7	45.4	<b>27.1</b>	98.8	27.7

55 Division	Reported	1	1	0	5	135	1,742	331	1,370	843	61	4,089	373	215	4,101	<b>13,267</b>	226	13,493
	Cleared	1	1	0	5	110	1,461	138	282	88	11	1,008	246	205	2,388	<b>5,944</b>	226	6,170
	% Cleared	100.0	100.0	0.0	100.0	81.5	83.9	41.7	20.6	10.4	18.0	24.7	66.0	95.3	58.2	<b>44.8</b>	100.0	45.7

Central Command	Reported	17	11	0	52	1,088	12,509	2,715	10,021	5,133	1,314	40,425	4,265	1,741	32,874	<b>112,165</b>	1,687	113,852
	Cleared	12	10	0	43	862	9,699	996	1,701	619	171	6,889	3,096	1,672	21,995	<b>47,765</b>	1,675	49,440
	% Cleared	70.6	90.9	0.0	82.7	79.2	77.5	36.7	17.0	12.1	13.0	17.0	72.6	96.0	66.9	<b>42.6</b>	99.3	43.4

\* Cleared cases may include offences reported prior to 1997.

\*\* Include motor cycle and snow vehicle and all attempts.

■ Statistics do not include 'Fail to Remain' violations.

# Criminal Code Offences Reported and Cleared\*- North West Command

MTPS 1997 Statistical Report

	First Degree Murder	Second Degree Murder	Manslaughter	Attempted Murder	Sexual Assault	Other Assault	Robbery	Break and Enter	Theft of Motor Vehicle**	Theft Over \$5,000	Theft Under \$5,000	Fraud	Offensive Weapons Offences	Other Criminal Code	Total Criminal Code Non-Traffic	Criminal Code Traffic☐	Total Criminal Code
--	---------------------	----------------------	--------------	------------------	----------------	---------------	---------	-----------------	--------------------------	--------------------	---------------------	-------	----------------------------	---------------------	---------------------------------	------------------------	---------------------

21 Division	Reported	0	0	1	3	57	694	88	475	375	65	1,064	172	70	1,661	<b>4,725</b>	<b>199</b>	<b>4,924</b>
	Cleared	0	0	1	2	40	594	39	206	81	7	159	135	70	1,355	<b>2,689</b>	<b>199</b>	<b>2,888</b>
	% Cleared	0.0	0.0	100.0	66.7	70.2	85.6	44.3	43.4	21.6	10.8	14.9	78.5	100.0	81.6	<b>56.9</b>	<b>100.0</b>	<b>58.7</b>

22 Division	Reported	3	0	0	5	66	728	160	967	962	129	3,402	397	94	3,157	<b>10,070</b>	<b>262</b>	<b>10,332</b>
	Cleared	3	0	0	5	52	561	72	85	87	25	552	244	83	1,930	<b>3,699</b>	<b>261</b>	<b>3,960</b>
	% Cleared	100.0	0	0.0	100.0	78.8	77.1	45.0	8.8	9.0	19.4	16.2	61.5	88.3	61.1	<b>36.7</b>	<b>99.6</b>	<b>38.3</b>

23 Division	Reported	5	0	1	10	128	1,641	342	1,375	1,930	148	4,539	371	131	3,022	<b>13,643</b>	<b>261</b>	<b>13,904</b>
	Cleared	3	0	1	9	98	1,213	82	165	190	8	797	237	117	1,547	<b>4,467</b>	<b>262</b>	<b>4,729</b>
	% Cleared	60.0	0	100.0	90.0	76.6	73.9	24.0	12.0	9.8	5.4	17.6	63.9	89.3	51.2	<b>32.7</b>	<b>100.4</b>	<b>34.0</b>

\* Cleared cases may include offences reported prior to 1997.

\*\* Include motor cycle and snow vehicle and all attempts.

☐ Statistics do not include 'Fail to Remain' violations.

# Criminal Code Offences Reported and Cleared\*- North West Command(Cont'd)

MTPS 1997 Statistical Report

	First Degree Murder	Second Degree Murder	Manslaughter	Attempted Murder	Sexual Assault	Other Assault	Robbery	Break and Enter	Theft of Motor Vehicle**	Theft Over \$5,000	Theft Under \$5,000	Fraud	Offensive Weapons Offences	Other Criminal Code	Total Criminal Code Non-Traffic	Criminal Code Traffic	Total Criminal Code
--	---------------------	----------------------	--------------	------------------	----------------	---------------	---------	-----------------	--------------------------	--------------------	---------------------	-------	----------------------------	---------------------	---------------------------------	-----------------------	---------------------

31 Division	Reported	5	5	0	24	175	1,877	480	1,569	1,594	107	4,572	653	265	4,021	<b>15,347</b>	<b>248</b>	<b>15,595</b>
	Cleared	4	5	0	8	132	1,429	123	185	124	15	567	361	243	1,935	<b>5,131</b>	<b>247</b>	<b>5,378</b>
	% Cleared	80.0	100.0	0.0	33.3	75.4	76.1	25.6	11.8	7.8	14.0	12.4	55.3	91.7	48.1	<b>33.4</b>	<b>99.6</b>	<b>34.5</b>

32 Division	Reported	1	0	0	9	79	1,152	262	1,847	1,214	204	5,132	724	130	4,297	<b>15,051</b>	<b>234</b>	<b>15,285</b>
	Cleared	1	0	0	11	66	909	110	169	112	24	996	490	123	2,564	<b>5,575</b>	<b>235</b>	<b>5,810</b>
	% Cleared	100.0	0.0	0.0	122.2	83.5	78.9	42.0	9.1	9.2	11.8	19.4	67.7	94.6	59.7	<b>37.0</b>	<b>100.4</b>	<b>38.0</b>

33 Division	Reported	0	2	0	4	114	847	164	1,073	1,104	115	3,351	340	135	2,597	<b>9,846</b>	<b>107</b>	<b>9,953</b>
	Cleared	0	3	0	4	110	783	66	486	193	18	1,027	236	138	1,513	<b>4,577</b>	<b>105</b>	<b>4,682</b>
	% Cleared	0.0	150.0	0.0	100.0	96.5	92.4	40.2	45.3	17.5	15.7	30.6	69.4	102.2	58.3	<b>46.5</b>	<b>98.1</b>	<b>47.0</b>

North West Command	Reported	14	7	2	55	619	6,939	1,496	7,306	7,179	768	22,060	2,657	825	18,755	<b>68,682</b>	<b>1,311</b>	<b>69,993</b>
	Cleared	11	8	2	39	498	5,489	492	1,296	787	97	4,098	1,703	774	10,844	<b>26,138</b>	<b>1,309</b>	<b>27,447</b>
	% Cleared	78.6	114.3	100.0	70.9	80.4	79.1	32.9	17.7	11.0	12.6	18.6	64.1	93.8	57.8	<b>38.1</b>	<b>99.8</b>	<b>39.2</b>

\* Cleared cases may include offences reported prior to 1997.

\*\* Include motor cycle and snow vehicle and all attempts.

☐ Statistics do not include 'Fail to Remain' violations.

# Criminal Code Offences Reported and Cleared\* - East Field Command

MTPS 1997 Statistical Report

	First Degree Murder	Second Degree Murder	Manslaughter	Attempted Murder	Sexual Assault	Other Assault	Robbery	Break and Enter	Theft of Motor Vehicle**	Theft Over \$5,000	Theft Under \$5,000	Fraud	Offensive Weapons Offences	Other Criminal Code	Total Criminal Code Non-Traffic	Criminal Code Traffic	Total Criminal Code
--	---------------------	----------------------	--------------	------------------	----------------	---------------	---------	-----------------	--------------------------	--------------------	---------------------	-------	----------------------------	---------------------	---------------------------------	-----------------------	---------------------

41 Division	Reported	2	2	0	6	209	2,488	472	2,090	1,715	145	5,239	550	338	6,165	<b>19,421</b>	<b>395</b>	<b>19,816</b>
	Cleared	1	2	0	5	170	1,993	166	321	161	32	1,406	415	316	4,147	<b>9,135</b>	<b>394</b>	<b>9,529</b>
	% Cleared	50.0	100.0	0.0	83.3	81.3	80.1	35.2	15.4	9.4	22.1	26.8	75.5	93.5	67.3	<b>47.0</b>	<b>99.7</b>	<b>48.1</b>

42 Division	Reported	2	1	1	27	243	2,313	647	2,688	2,039	162	7,005	577	422	5,570	<b>21,697</b>	<b>230</b>	<b>21,927</b>
	Cleared	0	1	1	15	209	1,844	161	352	301	53	4,044	311	409	4,706	<b>12,407</b>	<b>230</b>	<b>12,637</b>
	% Cleared	0.0	100.0	100.0	55.6	86.0	79.7	24.9	13.1	14.8	32.7	57.7	53.9	96.9	84.5	<b>57.2</b>	<b>100.0</b>	<b>57.6</b>

54 Division	Reported	2	0	0	5	143	1,319	263	979	727	64	2,277	300	135	2,814	<b>9,028</b>	<b>195</b>	<b>9,223</b>
	Cleared	0	0	0	4	122	1,057	105	129	66	11	315	201	121	1,566	<b>3,697</b>	<b>195</b>	<b>3,892</b>
	% Cleared	0.0	0.0	0.0	80.0	85.3	80.1	39.9	13.2	9.1	17.2	13.8	67.0	89.6	55.7	<b>41.0</b>	<b>100.0</b>	<b>42.2</b>

East Command	Reported	6	3	1	38	595	6,120	1,382	5,757	4,481	371	14,521	1,427	895	14,549	<b>50,146</b>	<b>820</b>	<b>50,966</b>
	Cleared	1	3	1	24	501	4,894	432	802	528	96	5,765	927	846	10,419	<b>25,239</b>	<b>819</b>	<b>26,058</b>
	% Cleared	16.7	100.0	0.0	63.2	84.2	80.0	31.3	13.9	11.8	25.9	39.7	65.0	94.5	71.6	<b>50.3</b>	<b>99.9</b>	<b>51.1</b>

\* Cleared cases may include offences reported prior to 1997.

\*\* Include motor cycle and snow vehicle and all attempts.

☐ Statistics do not include 'Fail to Remain' violations.

## Traffic and Other Offences - by Division

	Criminal Code Traffic						Other Offences							
	Dangerous Driving	Drive While Impaired	Refuse Breath/Blood/Screen	Over 80 mg	Drive while Disqualified	Total	Drug*	Other Federal Statutes	Liquor Licence Act - Drunk	Liquor Licence Act - Other	Other Provincial Statutes	Municipal By-Laws	Total=	Highway Traffic Act
11 Division	21	99	22	116	10	<b>268</b>	433	14	198	170	477	934	<b>2,226</b>	8,739
12 Division	23	68	11	56	17	<b>175</b>	316	23	70	98	303	118	<b>928</b>	5,973
13 Division	25	79	14	66	5	<b>189</b>	265	16	59	124	199	532	<b>1,195</b>	15,063
14 Division	43	165	29	153	10	<b>400</b>	1,081	47	662	882	1,775	2,552	<b>6,999</b>	15,663
21 Division	11	76	12	85	15	<b>199</b>	43	2	85	151	114	53	<b>448</b>	7,948
22 Division	24	98	23	108	9	<b>262</b>	106	4	69	93	223	449	<b>944</b>	13,319
23 Division	29	95	22	97	18	<b>261</b>	196	2	98	105	305	199	<b>905</b>	18,343
31 Division	40	93	16	80	19	<b>248</b>	400	7	29	212	537	1,063	<b>2,248</b>	16,989
32 Division	44	80	24	78	8	<b>234</b>	100	10	62	91	491	2,259	<b>3,013</b>	11,738
33 Division	21	35	6	44	1	<b>107</b>	75	3	9	19	219	1,347	<b>1,672</b>	13,054
41 Division	42	150	27	157	19	<b>395</b>	420	6	142	282	683	440	<b>1,973</b>	21,713
42 Division	38	84	9	83	16	<b>230</b>	314	4	63	141	397	100	<b>1,019</b>	37,970
51 Division	24	46	7	53	6	<b>136</b>	796	5	457	660	986	257	<b>3,161</b>	4,600
52 Division	38	67	18	75	11	<b>209</b>	957	246	356	604	1,877	5,822	<b>9,862</b>	15,204
53 Division	8	35	6	31	4	<b>84</b>	91	10	60	48	183	819	<b>1,211</b>	18,016
54 Division	32	71	15	71	6	<b>195</b>	260	1	60	64	308	342	<b>1,035</b>	14,964
55 Division	35	85	19	74	13	<b>226</b>	447	85	209	202	360	344	<b>1,647</b>	9,861
<b>Metro Total</b>	<b>498</b>	<b>1,426</b>	<b>280</b>	<b>1,427</b>	<b>187</b>	<b>3,818</b>	<b>6,300</b>	<b>485</b>	<b>2,688</b>	<b>3,946</b>	<b>9,437</b>	<b>17,630</b>	<b>40,486</b>	<b>249,157</b>

\* Includes Food & Drug Act and Narcotic Control Act.

Reflects the total Highway Traffic Act charges issued by divisional personnel.

= Excluding Highway Traffic Act.

The Total of the H.T.A. charges issued by divisional, traffic and other personnel was **305,971**.

( Excluding 'Fail to Remain' offences. Reflects the total Bylaw charges issued by divisional personnel. The total of the Bylaw charges issued by all units was 18,665. In previous years only selected bylaw charges were



# Criminal Code Offences - Persons Charged

MTPS 1997 Statistical Report

	First Degree Murder	Second Degree Murder	Manslaughter	Attempted Murder	Sexual Assault	Other Assault	Robbery	Break and Enter	Theft of Motor Vehicle	Theft Over \$5,000	Theft Under \$5,000	Fraud	Offensive Weapons Offences	Other Criminal Code	Total Criminal Code Non-Traffic	Total Criminal Code Traffic	Total Criminal Code
--	---------------------	----------------------	--------------	------------------	----------------	---------------	---------	-----------------	------------------------	--------------------	---------------------	-------	----------------------------	---------------------	---------------------------------	-----------------------------	---------------------

Young Offenders	Male	0	1	0	5	140	1,143	487	514	246	7	1,176	53	202	2,060	6,034	5	6,039
	Female	0	0	0	0	1	482	55	47	23	0	634	16	28	517	1,803	1	1,804
	Total	0	1	0	5	141	1,625	542	561	269	7	1,810	69	230	2,577	7,837	6	7,843

Adults	Male	14	18	6	84	773	9,432	654	1,090	321	119	4,434	1,164	588	11,004	29,701	1,652	31,353
	Female	2	1	0	3	12	1,811	92	64	40	27	2,123	564	52	3,440	8,231	128	8,359
	Total	16	19	6	87	785	11,243	746	1,154	361	146	6,557	1,728	640	14,444	37,932	1,780	39,712

<b>Metro Total</b>	<b>16</b>	<b>20</b>	<b>6</b>	<b>92</b>	<b>926</b>	<b>12,868</b>	<b>1,288</b>	<b>1,715</b>	<b>630</b>	<b>153</b>	<b>8,367</b>	<b>1,797</b>	<b>870</b>	<b>17,021</b>	<b>45,769</b>	<b>1,786</b>	<b>47,555</b>
--------------------	-----------	-----------	----------	-----------	------------	---------------	--------------	--------------	------------	------------	--------------	--------------	------------	---------------	---------------	--------------	---------------

## Traffic and Other Offences - Persons Charged

MTPS 1997 Statistical Report

		Criminal Code Traffic							Other Offences					
		Fail to Remain	Dangerous Driving	Drive While Impaired	Refuse Breath/Blood/Screen	Over 80 mg	Drive while Disqualified	Total	Drug*	Other Federal Statutes	Liquor Licence Act - Drunk	Liquor License Act - Other	Other Provincial Statutes	Total**
Young Offenders	Male	0	2	2	0	1	0	5	265	3	26	306	403	1,003
	Female	0	0	0	1	0	0	1	31	2	4	68	119	224
	Total	0	2	2	1	1	0	6	296	5	30	374	522	1,227
Adults	Male	92	117	1,065	36	285	57	1,652	2,022	100	2,320	2,889	4,891	12,222
	Female	6	4	91	3	23	1	128	304	44	245	305	1,875	2,773
	Total	98	121	1,156	39	308	58	1,780	2,326	144	2,565	3,194	6,766	14,995
<b>Metro Total</b>		<b>98</b>	<b>123</b>	<b>1,158</b>	<b>40</b>	<b>309</b>	<b>58</b>	<b>1,786</b>	<b>2,622</b>	<b>149</b>	<b>2,595</b>	<b>3,568</b>	<b>7,288</b>	<b>16,222</b>

\* Includes Food &amp; Drug Act and Narcotic Control Act.

\*\* Excluding Highway Traffic Act and Municipal Bylaws.

# Persons charged by unit

MTPS 1997 Statistical Report

Unit	Homicide	Attempted Murder	Sexual Assault	Other Assault	Robbery	Break and Enter	Motor Vehicle Theft*	Theft (All other)	Fraud	Offensive Weapons Offences	Other Criminal Code	Criminal Code Traffic	Drug	Other Offences**	Total charged
D11	1	1	35	575	50	64	19	187	63	39	982	116	131	714	<b>2,977</b>
D12	0	10	59	853	64	76	29	338	62	66	836	71	161	376	<b>3,001</b>
D13	2	1	39	689	40	67	35	121	69	35	599	76	162	330	<b>2,265</b>
D14	2	10	80	1,420	98	185	53	782	135	74	1,990	151	444	2,774	<b>8,198</b>
D21	1	0	13	374	22	58	21	77	42	21	543	87	22	296	<b>1,577</b>
D22	0	7	36	407	34	35	40	446	76	24	415	87	31	286	<b>1,924</b>
D23	2	5	43	701	64	53	32	548	123	28	580	132	58	421	<b>2,790</b>
D31	2	7	71	946	92	92	52	390	179	79	889	91	153	669	<b>3,712</b>
D32	3	7	38	644	56	87	40	776	129	38	759	92	92	526	<b>3,287</b>
D33	2	2	35	497	35	102	20	430	120	24	460	38	26	187	<b>1,978</b>
D41	1	5	82	991	113	149	57	834	115	59	1,329	153	53	915	<b>4,856</b>
D42	5	5	120	1,022	107	232	62	549	115	61	1,217	89	103	469	<b>4,156</b>
D51	1	8	46	657	108	112	26	214	57	85	1,429	43	254	1,826	<b>4,866</b>
D52	0	7	82	966	125	112	33	1,729	221	78	1,943	87	408	2,493	<b>8,284</b>
D53	1	1	19	295	36	39	14	201	51	25	421	34	178	252	<b>1,567</b>
D54	0	7	48	662	54	64	29	154	73	35	636	77	42	337	<b>2,218</b>
D55	3	6	58	1,001	84	153	48	668	67	55	1,137	72	203	694	<b>4,249</b>
SQUADS ☞	16	1	12	9	86	2	1	15	38	1	33	1	6	0	<b>221</b>
INT	0	0	1	12	1	3	0	0	0	5	47	0	3	1	<b>73</b>
SIS	0	0	2	43	13	10	4	29	24	10	257	3	7	3	<b>405</b>
TSV	0	1	0	20	2	7	9	14	30	1	154	252	4	10	<b>504</b>
OTHER	0	1	7	84	4	13	6	18	8	27	365	34	81	21	<b>669</b>
<b>Metro</b>	<b>42</b>	<b>92</b>	<b>926</b>	<b>12,868</b>	<b>1,288</b>	<b>1,715</b>	<b>630</b>	<b>8,520</b>	<b>1,797</b>	<b>870</b>	<b>17,021</b>	<b>1,786</b>	<b>2,622</b>	<b>13,600</b>	<b>63,777</b>

\* Includes attempt thefts

\*\* Includes federal statutes other than drug acts, liquor control acts and other provincial statutes.

## *Acknowledgement*

### **Managing Editor**

Acting Inspector Mike Sale  
Corporate Communications

### **Statistical Information Co-ordinators**

Donna Gilbert, Security Officer, IAS  
Karottu George, Analyst, IAS

### **Statistical Report Research/Validation**

Karottu George, Analyst, IAS

### **Statistical Report Layout/Design**

Karottu George, Analyst, IAS  
Ene Pulk, Corporate Communications

### **Printing and Production**

Metropolitan Toronto Corporate Reproduction Services

*A special thanks to all contributors, especially Computing and Telecommunications, for their unfailing support.*

For copies of this report  
Please write to:

Chief of Police  
Metropolitan Toronto Police Service  
40 College Street  
Toronto, Ontario  
M5J 2J3